

Statistical bulletin

# Employment in the UK: September 2019

Estimates of employment, unemployment and economic inactivity for the UK.



Contact:  
Bob Watson  
[labour.market@ons.gov.uk](mailto:labour.market@ons.gov.uk)  
+44 (0)1633 455070

Release date:  
10 September 2019

Next release:  
15 October 2019

## Table of contents

1. [Other pages in this release](#)
2. [Main points for May to July 2019](#)
3. [Analysis of employment in the UK](#)
4. [Employment data](#)
5. [Glossary](#)
6. [Measuring the data](#)
7. [Strengths and limitations](#)
8. [You might also be interested in](#)

# 1 . Other pages in this release

Other commentary from the latest labour market data can be found on the following pages:

- [Labour market overview](#)
- [Average weekly earnings in Great Britain](#)
- [Vacancies and jobs](#)

## 2 . Main points for May to July 2019

- The UK employment rate was estimated at 76.1%; this is the joint-highest on record since comparable records began in 1971 and higher than a year earlier (75.5%).
- The UK unemployment rate was estimated at 3.8%; this is lower than a year earlier (4.0%) and unchanged on the quarter.
- The UK economic inactivity rate was estimated at 20.8%; this is lower than a year earlier (21.2%) and unchanged on the quarter.

The data in this bulletin come from the Labour Force Survey, a survey of households. It is not practical to survey every household each quarter, so these statistics are estimates based on a large sample.

## 3 . Analysis of employment in the UK

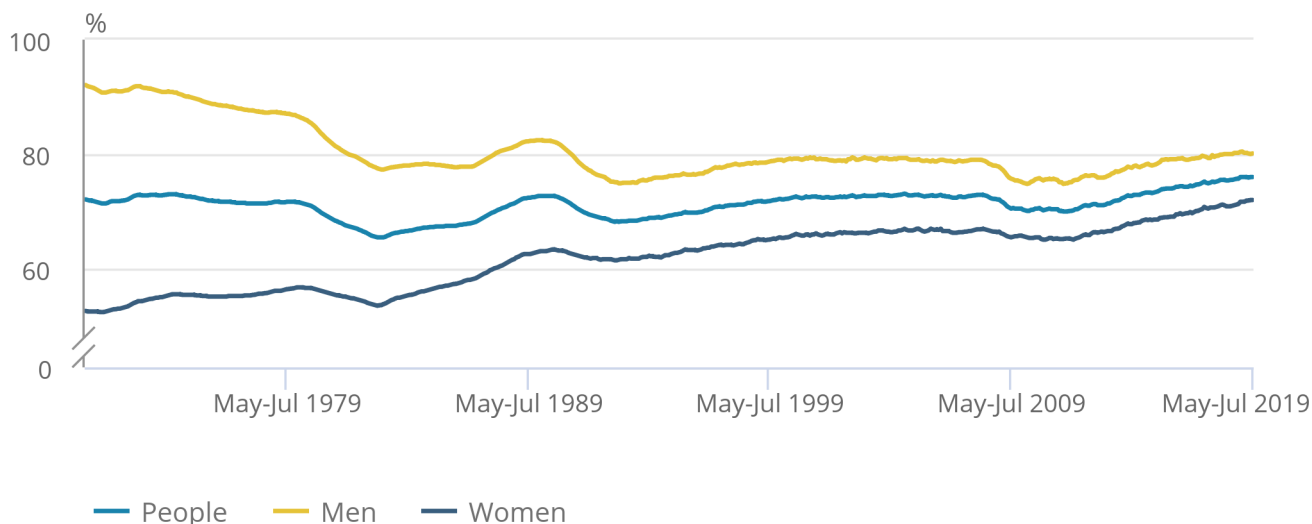
# Employment

## Figure 1: Employment rate for everyone was 76.1%, the joint -highest on record

UK employment rates (aged 16 to 64 years), seasonally adjusted, January to March 1971 to May to July 2019

### Figure 1: Employment rate for everyone was 76.1%, the joint -highest on record

UK employment rates (aged 16 to 64 years), seasonally adjusted, January to March 1971 to May to July 2019



Source: Office for National Statistics – Labour Force Survey

[Employment](#) measures the number of people aged 16 years and over in paid work. The employment rate is the proportion of people aged between 16 and 64 years who are in paid work.

Estimated employment rates for men and women aged between 16 and 64 years have generally been increasing since early 2012. For May to July 2019:

- the estimated employment rate for everyone was estimated at 76.1%; this is the joint-highest on record since comparable records began in 1971 and 0.6 percentage points higher on the year
- the estimated employment rate for men was 80.2%; this is up 0.1 percentage points on the year but down 0.1 percentage points on the quarter
- the estimated employment rate for women was 72.1%; this is the joint-highest since comparable records began in 1971 and 1.1 percentage points higher on the year

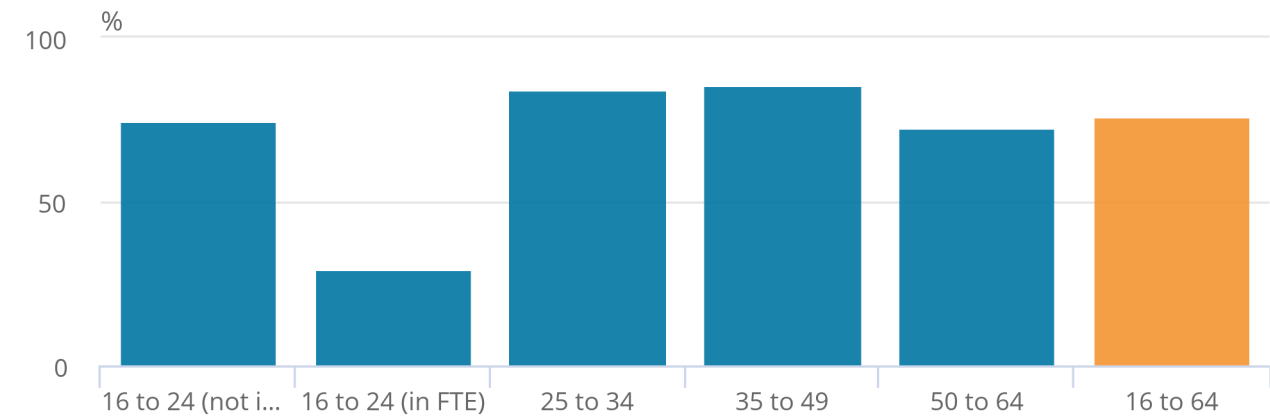
The increase in the employment rate for women in recent years is partly a result of changes to the State Pension age for women, resulting in fewer women retiring between the ages of 60 and 65 years.

**Figure 2: The highest employment rate, at 85.4%, was for those aged between 35 and 49 years**

UK employment rates by age band, seasonally adjusted, May to July 2019

Figure 2: The highest employment rate, at 85.4%, was for those aged between 35 and 49 years

UK employment rates by age band, seasonally adjusted, May to July 2019



Source: Office for National Statistics - Labour Force Survey

Notes:

1. FTE means full-time education. The “not in FTE” series includes people in part-time education and/or training.

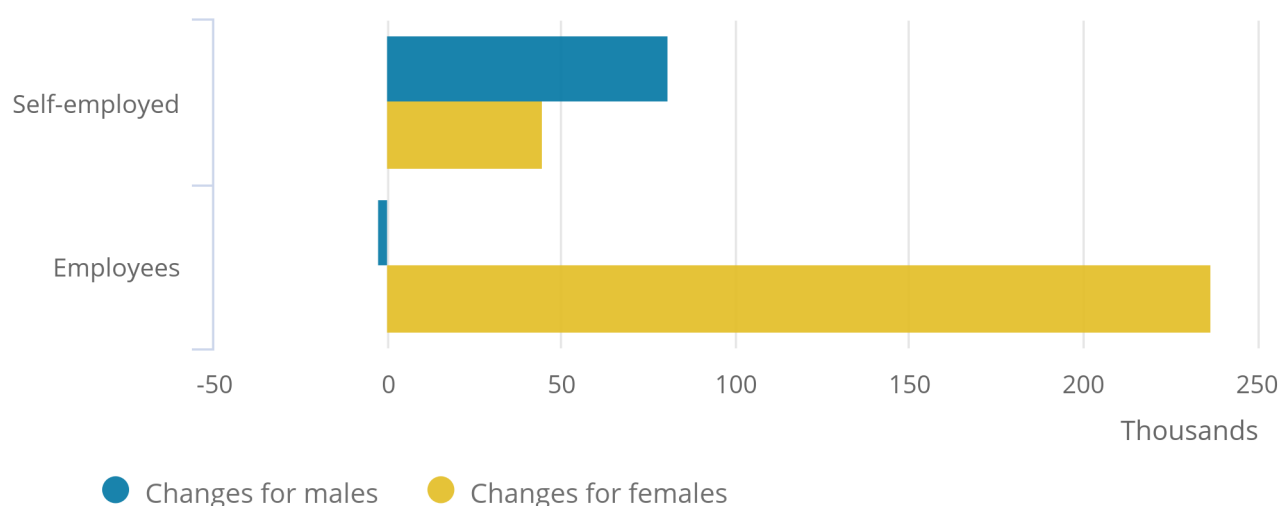
Looking at the estimates for employment rates by age band for May to July 2019, the highest were for those aged between 35 and 49 years (85.4%) and for those aged between 25 and 34 years (84.3%). The employment rate for those aged 50 to 64 years is 72.7%, a record high.

### Figure 3: Strong female employment growth between May to July 2019 and May to July 2019

Changes in number of employees and those self employed (aged 16 and over), by gender, in the UK, seasonally adjusted, between May to July 2018 and May to July 2019

### Figure 3: Strong female employment growth between May to July 2019 and May to July 2019

Changes in number of employees and those self employed (aged 16 and over), by gender, in the UK, seasonally adjusted, between May to July 2018 and May to July 2019



Source: Office for National Statistics - Labour Force Survey

Estimates for May to July 2019 show 32.78 million people aged 16 years and over in employment, 369,000 more than for a year earlier. This annual increase has mainly been driven by more women in employment (up 284,000 on the year to reach 15.52 million). Male employment also showed an increase of 86,000 on the year to reach 17.26 million; this increase was driven by those who were self-employed.

Looking at the estimates for May to July 2019 by type of employment:

- there were 27.67 million paid employees (84.4% of all people in employment), 235,000 more than a year earlier
- there were 4.93 million self-employed people (15.0% of all people in employment), 125,000 more than a year earlier

These estimates for paid employees and self-employed people make up over 99% of all people in employment in the UK. The total employment figure also includes two other minor categories as explained in the [Guide to labour market statistics](#).

Since estimates began in 1971, [total hours worked](#) by women have generally increased, reflecting increases in both the employment rate for women and the UK population. In contrast, total hours worked by men have been relatively stable. This is because falls in the employment rate for men have been roughly offset by population increases. Between May to July 2018 and May to July 2019:

- hours worked in the UK increased by 1.4% (to reach 1.05 billion hours)
- the number of people in employment in the UK increased by 1.1% (to reach 32.78 million)

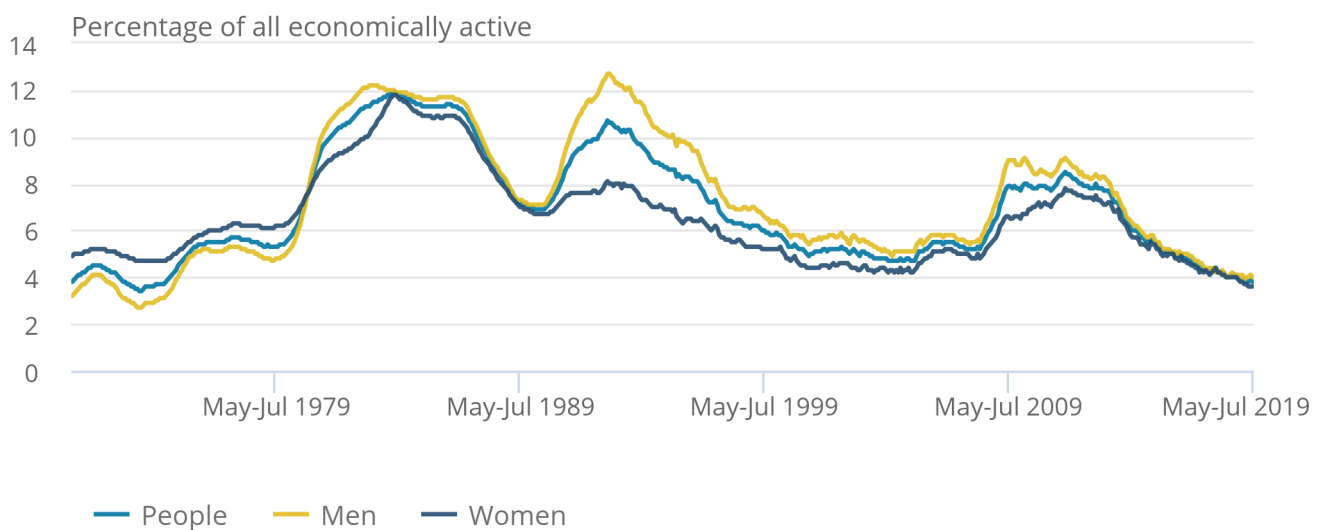
## Unemployment

**Figure 4: Unemployment rate for everyone has not been lower since 1974**

UK unemployment rates (aged 16 years and over), seasonally adjusted, January to March 1971 to May to July 2019

### Figure 4: Unemployment rate for everyone has not been lower since 1974

UK unemployment rates (aged 16 years and over), seasonally adjusted, January to March 1971 to May to July 2019



Source: Office for National Statistics - Labour Force Survey

[Unemployment](#) measures people without a job who have been actively seeking work within the last four weeks and are available to start work within the next two weeks. The unemployment rate is not the proportion of the total population who are unemployed. It is the proportion of the economically active population (those in work plus those seeking and available to work) who are unemployed.

Estimated unemployment rates for both men and women aged 16 years and over have been generally falling since late 2013.

For May to July 2019:

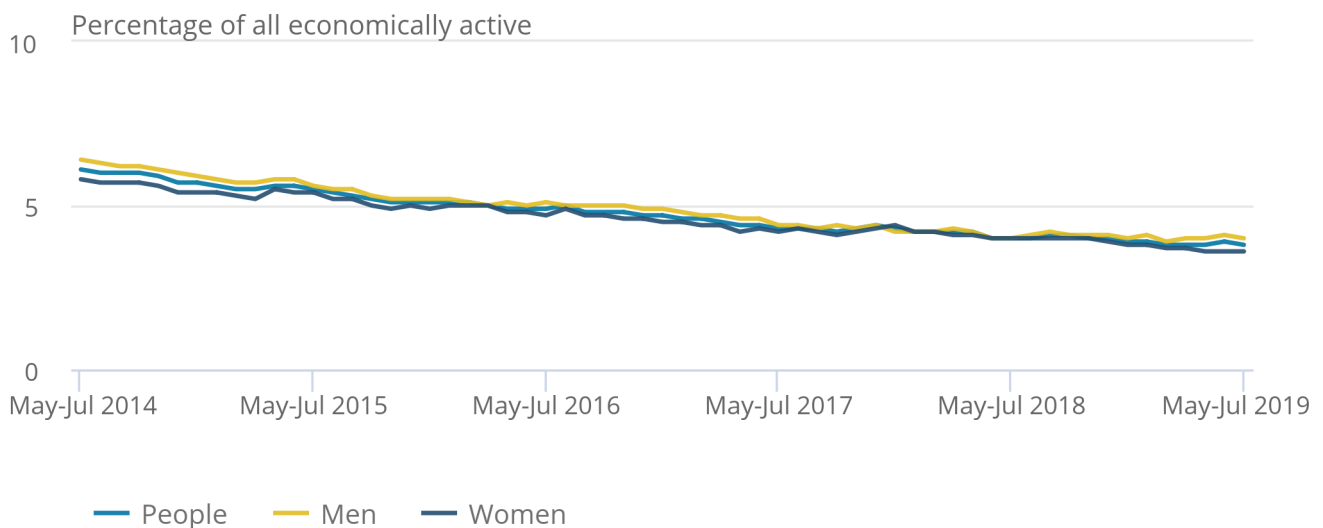
- the estimated UK unemployment rate for everyone was 3.8%, lower than a year earlier (4.0%); this has not been lower since October to December 1974
- the estimated UK unemployment rate for men was 4.0%, relatively unchanged from a year earlier
- the estimated UK unemployment rate for women was 3.6%, the joint-lowest since comparable records began in 1971 and 0.4 percentage points lower than a year earlier (4.0%)

### Figure 5: Unemployment rates for men and women have been falling steadily for the last five years

UK unemployment rates (aged 16 years and over), seasonally adjusted, May to July 2014 to May to July 2019

#### Figure 5: Unemployment rates for men and women have been falling steadily for the last five years

UK unemployment rates (aged 16 years and over), seasonally adjusted, May to July 2014 to May to July 2019



Source: Office for National Statistics - Labour Force Survey

Over the last five years:

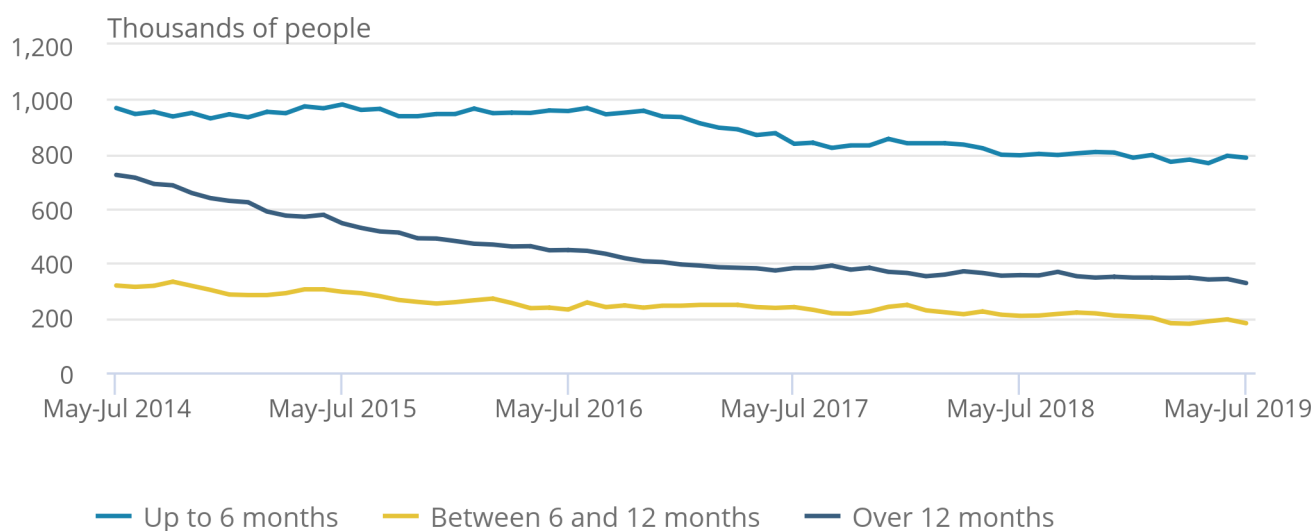
- the estimated unemployment rate for everyone fell from 6.1% to 3.8%
- the estimated unemployment rate for men fell from 6.4% to 4.0%
- the estimated unemployment rate for women fell from 5.8% to 3.6%

## Figure 6: Long-term unemployment has more than halved over the last five years

Unemployment in the UK by duration (aged 16 years and over), seasonally adjusted, May to July 2014 to May to July 2019

### Figure 6: Long-term unemployment has more than halved over the last five years

Unemployment in the UK by duration (aged 16 years and over), seasonally adjusted, May to July 2014 to May to July 2019



Source: Office for National Statistics - Labour Force Survey

For May to July 2019, an estimated 1.29 million people were unemployed, 64,000 fewer than a year earlier and 716,000 fewer than five years earlier. Looking in more detail at this fall of 716,000, unemployed people over the last five years:

- people unemployed for up to 6 months fell by 182,000 to 786,000 people out of work
- for between 6 and 12 months fell by 138,000 to 180,000
- the largest fall was for long-term unemployment; these are people unemployed for over one year (down 396,000 to 327,000)

## Economic inactivity

[Economic inactivity](#) measures people without a job but who are not classed as unemployed because they have not been actively seeking work within the last four weeks and/or they are unable to start work within the next two weeks. Our headline measure of economic inactivity is for those aged between 16 and 64 years.

Since comparable records began in 1971, the economic inactivity rate for all people aged between 16 and 64 years has been generally falling (although it increased during recessions). This is because of a gradual fall in the economic inactivity rate for women.

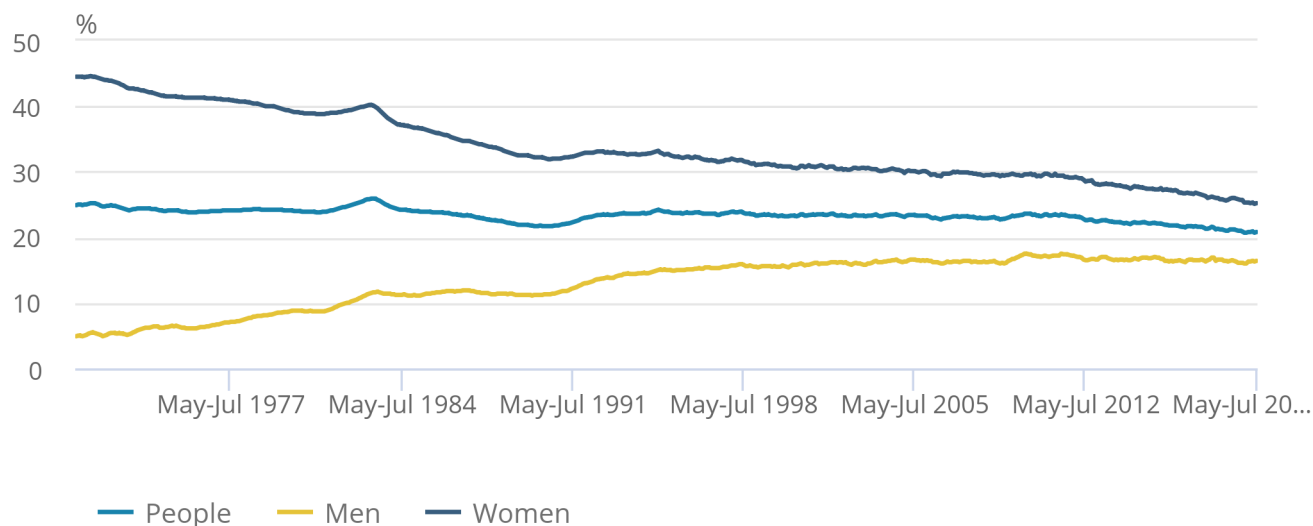


**Figure 7: Overall inactivity rate for people aged between 16 and 64 years was 20.8%, down 0.5 percentage points on the year**

UK economic inactivity rate (all people aged 16 to 64 years), seasonally adjusted, January to March 1971 to May to July 2019

**Figure 7: Overall inactivity rate for people aged between 16 and 64 years was 20.8%, down 0.5 percentage points on the year**

UK economic inactivity rate (all people aged 16 to 64 years), seasonally adjusted, January to March 1971 to May to July 2019



Source: Office for National Statistics – Labour Force Survey

For people aged between 16 and 64 years, for May to July 2019:

- the estimated economic inactivity rate for everyone was 20.8%, down 0.5 percentage points on the year
- the estimated economic inactivity rate for men was 16.4%, down 0.1 percentage points on the year
- the estimated economic inactivity rate for women was 25.2%, down 0.8 percentage points on the year

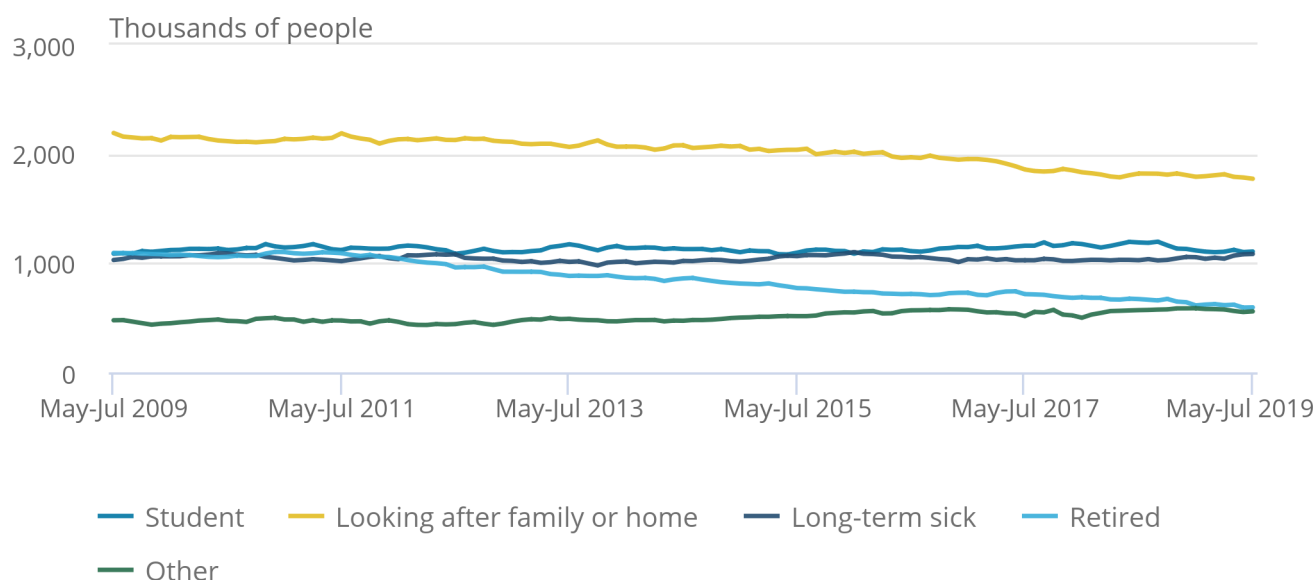
Estimates for May to July 2019 showed 8.59 million people aged from 16 to 64 years not in the labour force (economically inactive). This was 171,000 fewer than a year earlier and 487,000 fewer than five years earlier.

## Figure 8: More women in the labour force is the main cause of the fall in economic inactivity

Number of economically inactive women (aged 16 to 64) in the UK, seasonally adjusted, May to July 2009 to May to July 2019

### Figure 8: More women in the labour force is the main cause of the fall in economic inactivity

Number of economically inactive women (aged 16 to 64) in the UK, seasonally adjusted, May to July 2009 to May to July 2019



Source: Office for National Statistics - Labour Force Survey

Looking in more detail at the estimated fall of 487,000 in economic inactivity over the last five years, it was mainly driven by women (a fall of 464,000). The decrease in economic activity for men over the last five years was small (23,000).

The categories showing the largest falls were women younger than 65 years retiring from the labour force (down 265,000) and women looking after the family or home (down 306,000).

This reflects ongoing changes to the State Pension age, resulting in fewer women retiring between the ages of 60 and 65 years, as well as more women in younger age groups participating in the labour market.

## 4 . Employment data

The data in this bulletin follow internationally accepted definitions specified by the [International Labour Organization](#). This ensures that the estimates for the UK are comparable with those for other countries.

[Employment, unemployment and economic inactivity](#)

Dataset A05 SA | Released 10 September 2019

Estimates of UK employment, unemployment and economic inactivity broken down into age bands.

### [Full-time, part-time and temporary workers](#)

Dataset EMP01 SA | Released 10 September 2019

Estimates of UK employment including a breakdown by sex, type of employment, and full-time and part-time working.

### [Actual weekly hours worked](#)

Dataset HOUR01 SA | Released 10 September 2019

Estimates for the hours that people in employment work in the UK.

### [Unemployment by age and duration](#)

Dataset UNEM01 SA | Released 10 September 2019

Estimates of unemployment in the UK including a breakdown by sex, age group and the length of time people are unemployed.

### [Economic inactivity by reason](#)

Dataset INAC01 SA | Released 10 September 2019

Estimates of those not in the UK labour force measured by the reasons given for inactivity.

## 5 . Glossary

### Actual and usual hours worked

Statistics for [usual hours worked](#) measure how many hours people usually work per week. Compared with [actual hours worked](#), they are not affected by absences and so can provide a better measure of normal working patterns. For example, a person who usually works 37 hours a week but who was on holiday for a particular week would be recorded as working zero actual hours for that week, while usual hours would be recorded as 37 hours.

### Economic inactivity

People not in the labour force (also known as [economically inactive](#)) are not in employment but do not meet the internationally accepted definition of unemployment because they have not been seeking work within the last four weeks and/or they are unable to start work in the next two weeks. The economic inactivity rate is the proportion of people aged between 16 and 64 years who are not in the labour force.

### Employment

[Employment](#) measures the number of people in paid work and differs from the number of jobs because some people have more than one job. The employment rate is the proportion of people aged between 16 and 64 years who are in paid work. A more detailed explanation is available in our [Guide to labour market statistics](#).

### Unemployment

[Unemployment](#) measures people without a job who have been actively seeking work within the last four weeks and are available to start work within the next two weeks. The unemployment rate is not the proportion of the total population who are unemployed. It is the proportion of the economically active population (those in work plus those seeking and available to work) who are unemployed.

A [more detailed glossary](#) is available.

## 6 . Measuring the data

This bulletin relies on data collected from the [Labour Force Survey \(LFS\)](#), the largest household survey in the UK.

The [Quality and Methodology Information \(QMI\)](#) report pulls together important qualitative information on the various dimensions of data quality and provides a summary of the methods used to compile the output.

The [LFS performance and quality monitoring reports](#) provide data on response rates and other quality-related issues for the LFS.

## 7 . Strengths and limitations

The figures in this bulletin come from the Labour Force Survey (LFS), which gathers information from a sample of households across the UK rather than from the whole population. The sample is designed to be as accurate as possible given practical limitations such as time and cost constraints. Results from sample surveys are always estimates, not precise figures. This can have an impact on how changes in the estimates should be interpreted, especially for short-term comparisons.

As the number of people available in the sample gets smaller, the variability of the estimates that we can make from that sample size gets larger. Estimates for small groups (for example, unemployed people aged between 16 and 17 years), which are based on small subsets of the LFS sample, are less reliable and tend to be more volatile than for larger aggregated groups (for example, the total number of unemployed people).

In general, changes in the numbers (and especially the rates) reported in this bulletin between three-month periods are small and are not usually greater than the level that can be explained by sampling variability. Short-term movements in reported rates should be considered alongside longer-term patterns in the series and corresponding movements in other sources to give a fuller picture.

Further information is available in [A guide to labour market statistics](#).

Table 1: Summary of UK employment estimates for May to July 2019, seasonally adjusted

	Estimate (seasonally adjusted)	Sampling variability of estimate (1)	Change on quarter	Sampling variability of change on quarter (1)	Change on year	Sampling variability of change on year (1)
Employment (thousands of people aged 16 years and over)	32,777	± 179	31	± 151	369	± 239
Employment rate (% , aged 16 to 64 years)	76.1%	± 0.4	0.0	± 0.3	0.6	± 0.5
Unemployment (thousands of people aged 16 years and over)	1,294	± 68	-11	± 73	-64	± 97
Unemployment rate (% , aged 16 years and over)	3.8%	± 0.2	0.0	± 0.2	-0.2	± 0.3
Economically inactive (thousands of people aged 16 to 64 years)	8,587	± 156	6	± 134	-171	± 208
Economic inactivity rate (% , aged 16 to 64 years)	20.8%	± 0.4	0.0	± 0.3	-0.5	± 0.5

Source: Office for National Statistics - Labour Force Survey

#### Notes

1. The sampling variability estimates are for 95% confidence intervals and are calculated on data that are not seasonally adjusted. [Back to table](#)

## 8 . You might also be interested in

The Office for Statistics Regulation (OSR) has a planned [reassessment of labour market employment estimates](#), which aims to publish a set of recommendations in early 2020. As part of this assessment, the OSR may contact you to:

- gather feedback on your use of labour market estimates
- listen to your suggestions on ways we can build on our current engagement opportunities
- capture examples of where we have worked (or are working) together to improve communication and use of our statistics

The three sections of the recommendations report will cover trustworthiness, quality and value. The OSR will coordinate engagement with you but please feel free to contact David Freeman ( [david.freeman@ons.gov.uk](mailto:david.freeman@ons.gov.uk)) or Matt Hughes ( [matthew.hughes@ons.gov.uk](mailto:matthew.hughes@ons.gov.uk)) if you wish to discuss further.

[Labour market economic commentary](#)

Article | Released 10 September 2019

Additional economic analysis of the latest UK labour market headline statistics and long-term trends.

[Regional labour market statistics in the UK](#)

Bulletin | Released 10 September 2019

Regional, local authority and Parliamentary constituency breakdowns of changes in UK employment, unemployment, economic inactivity and other employment-related statistics.

[UK and non-UK people in the labour market](#)

Article | Released 13 August 2019

Estimates of labour market activity by nationality and country of birth.

[Public sector employment](#)

Bulletin | Released 10 September 2019

Quarterly estimates of the number of people employed in the public and private sectors in the UK. The public sector comprises central government, local government and public corporations.

[Young people not in education, employment or training](#)

Bulletin | Released 22 August 2019

Quarterly bulletin examining estimates of men and women aged between 16 and 24 years in the UK who are not studying or in employment.

[Working and workless households in the UK](#)

Bulletin | Released 28 August 2019

Commentary on quarterly estimates of the economic status of UK households and the people living in them.

# Index of Tables

The table below provides an index of the tables appearing in this Statistical Bulletin and it shows how these table numbers match up with the Excel spreadsheet datasets which are available on the website at:

<https://www.ons.gov.uk/employmentandlabourmarket/peopleinwork/employmentandemployeetypes/bulletins/uklabourmarket/september2019/relateddata>

The complete set of labour market tables is available from the Labour Market Overview bulletin.

Statistical Bulletin table number	Table description	Dataset
<b>SUMMARY</b>		
1	Labour Force Survey Summary	<a href="#">Dataset A02 SA</a>
2 (*)	Labour market status by age group	<a href="#">Dataset A05 SA</a>
<b>EMPLOYMENT AND JOBS</b>		
3	Full-time, part-time & temporary workers	<a href="#">Dataset EMP01 SA</a>
4	Public and private sector employment	<a href="#">Dataset EMP02</a>
4(1)	Public sector employment by industry	<a href="#">Dataset EMP03</a>
5	Workforce jobs summary	<a href="#">Dataset JOBS01</a>
6 (**)	Workforce jobs by industry	<a href="#">Dataset JOBS02</a>
7	Actual weekly hours worked	<a href="#">Dataset HOUR01 SA</a>
7(1)	Usual weekly hours worked	<a href="#">Dataset HOUR02 SA</a>
<b>NON-UK WORKERS</b>		
8	Employment by country of birth and nationality	<a href="#">Dataset EMP06</a>
8(1)	Unemployment and economic inactivity by country of birth and nationality	<a href="#">Dataset A12</a>
<b>UNEMPLOYMENT</b>		
9	Unemployment by age and duration	<a href="#">Dataset UNEM01 SA</a>
<b>ECONOMIC ACTIVITY AND INACTIVITY</b>		
10(*)	Economic activity by age	<a href="#">Dataset A05 SA</a>
11	Economic inactivity by reason	<a href="#">Dataset INAC01 SA</a>
12	Labour market and educational status of young people	<a href="#">Dataset A06 SA</a>
<b>EARNINGS</b>		
13	Average Weekly Earnings (nominal) - Total pay	<a href="#">Dataset EARN01</a>
14	Average Weekly Earnings (nominal) - Bonus pay	<a href="#">Dataset EARN01</a>
15	Average Weekly Earnings (nominal) - Regular pay	<a href="#">Dataset EARN01</a>
16	Average Weekly Earnings real and nominal (summary table)	<a href="#">Dataset EARN01</a>
<b>INTERNATIONAL SUMMARY</b>		
17	International comparisons of employment and unemployment	<a href="#">Dataset A10</a>
<b>LABOUR DISPUTES</b>		
18	Labour disputes	<a href="#">Dataset LABD01</a>
<b>VACANCIES</b>		
19	Vacancies by size of business	<a href="#">Dataset VACS03</a>
20	Vacancies and unemployment	<a href="#">Dataset VACS01</a>
21	Vacancies by industry	<a href="#">Dataset VACS02</a>
<b>REDUNDANCIES</b>		
22	Redundancies levels and rates	<a href="#">Dataset RED01 SA</a>
<b>REGIONAL SUMMARY</b>		
23	Regional labour market summary	<a href="#">Dataset A07</a>

(\*) Tables 2 and 10 in the Statistical Bulletin pdf file have been amalgamated into one spreadsheet (Dataset A05 SA).

(\*\*) Table JOBS02 provides more detail than Table 6 in the Statistical Bulletin pdf file.

The following symbols are used in the tables: p provisional, r revised, .. Not available, \* suppressed due to small sample size.

The four-character identification codes appearing in the tables are the ONS references for the data series appearing in the Labour Market Statistics dataset which is available on the website at:

<https://www.ons.gov.uk/employmentandlabourmarket/peopleinwork/employmentandemployeetypes/datasets/labourmarketstatistics>

# SUMMARY

## 1 Summary of headline LFS<sup>1</sup> indicators

United Kingdom (thousands)  
seasonally adjusted

		LFS household population <sup>1</sup>		Headline indicators					
				Employment		Unemployment		Inactivity	
				Level	Rate <sup>2</sup>	Level	Rate <sup>3</sup>	Level	Rate <sup>4</sup>
		All aged 16 & over	All aged 16 to 64	All aged 16 & over	All aged 16 to 64	All aged 16 & over	All aged 16 & over	All aged 16 to 64	All aged 16 to 64
		MGSL	LF2O	MGRZ	LF24	MGSC	MG SX	LF2M	LF2S
<b>People</b>									
	May-Jul 2017	52,739	41,157	32,133	75.3	1,457	4.3	8,749	21.3
	May-Jul 2018	53,025	41,251	32,408	75.5	1,358	4.0	8,758	21.2
	Aug-Oct 2018	53,093	41,271	32,492	75.7	1,373	4.1	8,666	21.0
	Nov-Jan 2019	53,161	41,291	32,714	76.1	1,338	3.9	8,549	20.7
	Feb-Apr 2019	53,229	41,310	32,746	76.1	1,304	3.8	8,581	20.8
	<b>May-Jul 2019</b>	<b>53,298</b>	<b>41,330</b>	<b>32,777</b>	<b>76.1</b>	<b>1,294</b>	<b>3.8</b>	<b>8,587</b>	<b>20.8</b>
	Change on quarter	68	20	31	0.0	-11	0.0	6	0.0
	Change %	0.1	0.0	0.1		-0.8		0.1	
	Change on year	273	79	369	0.6	-64	-0.2	-171	-0.5
	Change %	0.5	0.2	1.1		-4.7		-1.9	
<b>Men</b>									
		MGSM	YBTG	MGSA	MG SV	MGSD	MG SY	YBSO	YBTM
	May-Jul 2017	25,777	20,450	17,010	79.7	791	4.4	3,369	16.5
	May-Jul 2018	25,944	20,514	17,175	80.1	718	4.0	3,375	16.5
	Aug-Oct 2018	25,981	20,526	17,240	80.3	744	4.1	3,314	16.1
	Nov-Jan 2019	26,019	20,538	17,317	80.5	728	4.0	3,290	16.0
	Feb-Apr 2019	26,056	20,550	17,290	80.3	719	4.0	3,341	16.3
	<b>May-Jul 2019</b>	<b>26,093</b>	<b>20,562</b>	<b>17,261</b>	<b>80.2</b>	<b>710</b>	<b>4.0</b>	<b>3,364</b>	<b>16.4</b>
	Change on quarter	37	12	-29	-0.1	-8	0.0	23	0.1
	Change %	0.1	0.1	-0.2		-1.2		0.7	
	Change on year	150	48	86	0.1	-8	-0.1	-11	-0.1
	Change %	0.6	0.2	0.5		-1.1		-0.3	
<b>Women</b>									
		MG SN	LF2P	MG SB	LF25	MG SE	MG SZ	LF2N	LF2T
	May-Jul 2017	26,962	20,707	15,123	70.9	666	4.2	5,379	26.0
	May-Jul 2018	27,081	20,738	15,233	71.0	640	4.0	5,383	26.0
	Aug-Oct 2018	27,112	20,745	15,252	71.2	629	4.0	5,351	25.8
	Nov-Jan 2019	27,143	20,753	15,396	71.8	611	3.8	5,259	25.3
	Feb-Apr 2019	27,173	20,760	15,456	72.0	586	3.7	5,240	25.2
	<b>May-Jul 2019</b>	<b>27,204</b>	<b>20,768</b>	<b>15,517</b>	<b>72.1</b>	<b>583</b>	<b>3.6</b>	<b>5,223</b>	<b>25.2</b>
	Change on quarter	31	8	60	0.1	-2	0.0	-17	-0.1
	Change %	0.1	0.0	0.4		-0.4		-0.3	
	Change on year	123	31	284	1.1	-56	-0.4	-159	-0.8
	Change %	0.5	0.1	1.9		-8.8		-3.0	

Source: Labour Force Survey

Labour market statistics enquiries: labour.market@ons.gov.uk

1. The Labour Force Survey (LFS) is a survey of households in the UK.

2. The headline employment rate is the number of people aged 16 to 64 in employment divided by the population aged 16 to 64.

3. The headline unemployment rate is the number of unemployed people (aged 16+) divided by the economically active population (aged 16+). The economically active population is defined as those in employment plus those who are unemployed.

4. The headline inactivity rate is the number of people aged 16 to 64 divided by the population aged 16-64.

### Note on headline employment, unemployment and inactivity rates

The headline employment and inactivity rates are based on the population aged 16 to 64 but the headline unemployment rate is based on the economically active population aged 16 and over. The employment and inactivity rates for those aged 16 and over are affected by the inclusion of the retired population in the denominators and are therefore less meaningful than the rates for those aged from 16 to 64. However, for the unemployment rate for those aged 16 and over, no such effect occurs as the denominator for the unemployment rate is the economically active population which only includes people in work or actively seeking and able to work.

### Note on headline employment, unemployment and inactivity levels

The headline employment and unemployment levels are for those aged 16 and over; they measure all people in work or actively seeking and able to work. However, the headline inactivity level is for those aged 16 to 64. The inactivity rate for those aged 16 and over is less meaningful as it includes elderly people who have retired from the labour force.



# SUMMARY

## 2(1) Labour market status by age group

United Kingdom (thousands) seasonally adjusted

		Aged 16 and over						Aged 16-64					
		Employment		Unemployment		Inactivity		Employment		Unemployment		Inactivity	
		Level	Rate	Level	Rate	Level	Rate	Level	Rate	Level	Rate	Level	Rate
		MGRZ	MGRS	MGSC	MGSX	MGSI	YBTC	LF2G	LF24	LF2I	LF2Q	LF2M	LF2S
People	May-Jul 2017	32,133	60.9	1,457	4.3	19,149	36.3	30,977	75.3	1,432	4.4	8,749	21.3
	May-Jul 2018	32,408	61.1	1,358	4.0	19,260	36.3	31,153	75.5	1,341	4.1	8,758	21.2
	Aug-Oct 2018	32,492	61.2	1,373	4.1	19,227	36.2	31,247	75.7	1,358	4.2	8,666	21.0
	Nov-Jan 2019	32,714	61.5	1,338	3.9	19,109	35.9	31,425	76.1	1,317	4.0	8,549	20.7
	Feb-Apr 2019	32,746	61.5	1,304	3.8	19,179	36.0	31,443	76.1	1,287	3.9	8,581	20.8
	<b>May-Jul 2019</b>	<b>32,777</b>	<b>61.5</b>	<b>1,294</b>	<b>3.8</b>	<b>19,227</b>	<b>36.1</b>	<b>31,463</b>	<b>76.1</b>	<b>1,280</b>	<b>3.9</b>	<b>8,587</b>	<b>20.8</b>
	Change on quarter	31	0.0	-11	0.0	48	0.0	21	0.0	-7	0.0	6	0.0
	Change %	0.1		-0.8		0.2		0.1		-0.5		0.1	
	Change on year	369	0.4	-64	-0.2	-33	-0.2	311	0.6	-61	-0.2	-171	-0.5
	Change %	1.1		-4.7		-0.2		1.0		-4.6		-1.9	
Men		MGSA	MGSS	MGSD	MGSY	MGSJ	YBTD	YBSF	MGSV	YBSI	YBTJ	YBSO	YBTM
	May-Jul 2017	17,010	66.0	791	4.4	7,976	30.9	16,305	79.7	775	4.5	3,369	16.5
	May-Jul 2018	17,175	66.2	718	4.0	8,051	31.0	16,429	80.1	709	4.1	3,375	16.5
	Aug-Oct 2018	17,240	66.4	744	4.1	7,997	30.8	16,478	80.3	734	4.3	3,314	16.1
	Nov-Jan 2019	17,317	66.6	728	4.0	7,973	30.6	16,532	80.5	716	4.1	3,290	16.0
	Feb-Apr 2019	17,290	66.4	719	4.0	8,047	30.9	16,500	80.3	709	4.1	3,341	16.3
	<b>May-Jul 2019</b>	<b>17,261</b>	<b>66.1</b>	<b>710</b>	<b>4.0</b>	<b>8,123</b>	<b>31.1</b>	<b>16,497</b>	<b>80.2</b>	<b>701</b>	<b>4.1</b>	<b>3,364</b>	<b>16.4</b>
	Change on quarter	-29	-0.2	-8	0.0	75	0.2	-3	-0.1	-8	0.0	23	0.1
	Change %	-0.2		-1.2		0.9		0.0		-1.1		0.7	
	Change on year	86	-0.1	-8	-0.1	72	0.1	68	0.1	-8	-0.1	-11	-0.1
	Change %	0.5		-1.1		0.9		0.4		-1.2		-0.3	
Women		MGST	MGST	MGSE	MGSZ	MGSK	YBTE	LF2H	LF25	LF2J	LF2R	LF2N	LF2T
	May-Jul 2017	15,123	56.1	666	4.2	11,172	41.4	14,672	70.9	656	4.3	5,379	26.0
	May-Jul 2018	15,233	56.2	640	4.0	11,208	41.4	14,723	71.0	632	4.1	5,383	26.0
	Aug-Oct 2018	15,252	56.3	629	4.0	11,231	41.4	14,769	71.2	625	4.1	5,351	25.8
	Nov-Jan 2019	15,396	56.7	611	3.8	11,136	41.0	14,892	71.8	602	3.9	5,259	25.3
	Feb-Apr 2019	15,456	56.9	586	3.7	11,132	41.0	14,943	72.0	578	3.7	5,240	25.2
	<b>May-Jul 2019</b>	<b>15,517</b>	<b>57.0</b>	<b>583</b>	<b>3.6</b>	<b>11,104</b>	<b>40.8</b>	<b>14,966</b>	<b>72.1</b>	<b>579</b>	<b>3.7</b>	<b>5,223</b>	<b>25.2</b>
	Change on quarter	60	0.2	-2	0.0	-27	-0.1	23	0.1	1	0.0	-17	-0.1
	Change %	0.4		-0.4		-0.2		0.2		0.2		-0.3	
	Change on year	284	0.8	-56	-0.4	-104	-0.6	243	1.1	-53	-0.4	-159	-0.8
	Change %	1.9		-8.8		-0.9		1.6		-8.4		-3.0	
		Aged 16-17						Aged 18-24					
		Employment		Unemployment		Inactivity		Employment		Unemployment		Inactivity	
		Level	Rate	Level	Rate	Level	Rate	Level	Rate	Level	Rate	Level	Rate
		YBTO	YBUA	YBVH	YBVK	YCAS	LWEX	YBTR	YBUD	YBVN	YBVQ	YCAV	LWFA
People	May-Jul 2017	338	23.7	107	24.1	981	68.8	3,546	62.7	425	10.7	1,688	29.8
	May-Jul 2018	348	25.0	100	22.4	945	67.8	3,487	62.3	389	10.0	1,724	30.8
	Aug-Oct 2018	321	23.1	95	22.8	977	70.1	3,513	63.0	400	10.2	1,665	29.8
	Nov-Jan 2019	318	22.9	91	22.2	984	70.6	3,540	63.7	409	10.4	1,608	28.9
	Feb-Apr 2019	339	24.3	86	20.3	967	69.5	3,470	62.7	394	10.2	1,672	30.2
	<b>May-Jul 2019</b>	<b>351</b>	<b>25.2</b>	<b>84</b>	<b>19.3</b>	<b>957</b>	<b>68.8</b>	<b>3,430</b>	<b>62.2</b>	<b>404</b>	<b>10.5</b>	<b>1,681</b>	<b>30.5</b>
	Change on quarter	12	0.9	-3	-1.0	-10	-0.7	-40	-0.5	10	0.3	10	0.3
	Change %	3.6		-3.0		-1.0		-1.2		2.5		0.6	
	Change on year	3	0.2	-17	-3.1	12	1.0	-57	-0.1	15	0.5	-43	-0.3
	Change %	0.7		-16.5		1.3		-1.6		3.9		-2.5	
Men		YBTP	YBUB	YBVI	YBVL	YCAT	LWEY	YBTS	YBUE	YBVO	YBVR	YCAW	LWFB
	May-Jul 2017	159	21.7	58	26.8	514	70.3	1,819	63.0	249	12.1	818	28.3
	May-Jul 2018	174	24.3	49	22.1	490	68.7	1,822	63.7	223	10.9	815	28.5
	Aug-Oct 2018	155	21.7	55	26.1	503	70.6	1,847	64.8	231	11.1	771	27.1
	Nov-Jan 2019	154	21.6	48	23.6	511	71.7	1,827	64.4	250	12.0	761	26.8
	Feb-Apr 2019	160	22.4	45	22.1	508	71.2	1,764	62.4	248	12.3	816	28.9
	<b>May-Jul 2019</b>	<b>164</b>	<b>23.0</b>	<b>46</b>	<b>22.0</b>	<b>502</b>	<b>70.5</b>	<b>1,745</b>	<b>61.9</b>	<b>246</b>	<b>12.3</b>	<b>826</b>	<b>29.3</b>
	Change on quarter	4	0.6	1	-0.1	-5	-0.7	-19	-0.4	-2	0.0	10	0.5
	Change %	2.7		2.1		-1.0		-1.1		-1.0		1.3	
	Change on year	-10	-1.3	-3	-0.1	12	1.7	-77	-1.7	23	1.4	11	0.8
	Change %	-5.5		-5.8		2.5		-4.2		10.2		1.3	
Women		YBTQ	YBUC	YBVJ	YBVM	YCAU	LWEZ	YBTT	YBUF	YBVP	YBVS	YCAH	LWFC
	May-Jul 2017	179	25.8	49	21.5	467	67.2	1,727	62.3	176	9.3	870	31.4
	May-Jul 2018	175	25.7	51	22.6	455	66.8	1,665	60.8	166	9.0	909	33.2
	Aug-Oct 2018	166	24.5	40	19.5	473	69.6	1,666	61.1	169	9.2	894	32.8
	Nov-Jan 2019	164	24.1	43	20.8	472	69.5	1,713	63.0	159	8.5	847	31.1
	Feb-Apr 2019	179	26.4	41	18.6	459	67.6	1,707	63.0	146	7.9	856	31.6
	<b>May-Jul 2019</b>	<b>187</b>	<b>27.5</b>	<b>37</b>	<b>16.7</b>	<b>454</b>	<b>67.0</b>	<b>1,685</b>	<b>62.4</b>	<b>158</b>	<b>8.6</b>	<b>855</b>	<b>31.7</b>
	Change on quarter	8	1.2	-4	-1.9	-5	-0.6	-22	-0.6	12	0.7	-1	0.1
	Change %	4.3		-8.7		-1.0		-1.3		8.3		-0.1	
	Change on year	12	1.8	-14	-5.9	0	0.1	20	1.7	-8	-0.5	-53	-1.5
	Change %	6.9		-26.7		0.0		1.2		-4.6		-5.9	

# SUMMARY

## 2(2) Labour market status by age group

United Kingdom (thousands) seasonally adjusted

People	Aged 25-34						Aged 35-49					
	Employment		Unemployment		Inactivity		Employment		Unemployment		Inactivity	
	Level	Rate	Level	Rate	Level	Rate	Level	Rate	Level	Rate	Level	Rate
	YBTU	YBUG	YCGM	YCGP	YCAV	LWFD	YBTX	YBUJ	YCGS	YCGV	YCBB	LWFG
May-Jul 2017	7,436	83.8	282	3.7	1,158	13.0	10,859	84.7	329	2.9	1,639	12.8
May-Jul 2018	7,429	83.2	298	3.9	1,200	13.4	10,875	85.1	295	2.6	1,607	12.6
Aug-Oct 2018	7,469	83.6	291	3.7	1,176	13.2	10,878	85.2	305	2.7	1,581	12.4
Nov-Jan 2019	7,535	84.2	257	3.3	1,153	12.9	10,893	85.4	289	2.6	1,570	12.3
Feb-Apr 2019	7,564	84.5	250	3.2	1,139	12.7	10,871	85.3	293	2.6	1,574	12.4
<b>May-Jul 2019</b>	<b>7,557</b>	<b>84.3</b>	<b>265</b>	<b>3.4</b>	<b>1,141</b>	<b>12.7</b>	<b>10,867</b>	<b>85.4</b>	<b>269</b>	<b>2.4</b>	<b>1,590</b>	<b>12.5</b>
Change on quarter	-7	-0.2	14	0.2	2	0.0	-4	0.1	-24	-0.2	15	0.1
Change %	-0.1		5.7		0.2		0.0		-8.1		1.0	
Change on year	128	1.1	-34	-0.5	-59	-0.7	-7	0.3	-26	-0.2	-18	-0.1
Change %	1.7		-11.3		-4.9		-0.1		-8.8		-1.1	
<b>Men</b>	<b>YBTV</b>	<b>YBUH</b>	<b>YCGN</b>	<b>YCGQ</b>	<b>YCAZ</b>	<b>LWFE</b>	<b>YBTY</b>	<b>YBUK</b>	<b>YCGT</b>	<b>YCGW</b>	<b>YCBC</b>	<b>LWFH</b>
May-Jul 2017	3,999	90.3	139	3.4	291	6.6	5,734	90.6	153	2.6	444	7.0
May-Jul 2018	3,998	89.4	157	3.8	318	7.1	5,726	90.8	145	2.5	436	6.9
Aug-Oct 2018	4,019	89.7	148	3.6	313	7.0	5,727	90.9	155	2.6	420	6.7
Nov-Jan 2019	4,046	90.2	137	3.3	304	6.8	5,753	91.4	128	2.2	414	6.6
Feb-Apr 2019	4,061	90.4	135	3.2	299	6.7	5,739	91.2	134	2.3	417	6.6
<b>May-Jul 2019</b>	<b>4,047</b>	<b>89.9</b>	<b>145</b>	<b>3.4</b>	<b>311</b>	<b>6.9</b>	<b>5,743</b>	<b>91.4</b>	<b>123</b>	<b>2.1</b>	<b>418</b>	<b>6.7</b>
Change on quarter	-15	-0.5	10	0.2	12	0.3	4	0.1	-11	-0.2	1	0.0
Change %	-0.4		7.4		4.0		0.1		-8.2		0.3	
Change on year	48	0.5	-12	-0.3	-7	-0.2	17	0.6	-22	-0.4	-18	-0.3
Change %	1.2		-7.7		-2.1		0.3		-15.2		-4.1	
<b>Women</b>	<b>YBTW</b>	<b>YBUI</b>	<b>YCGO</b>	<b>YCGR</b>	<b>YCBA</b>	<b>LWFF</b>	<b>YBTZ</b>	<b>YBUL</b>	<b>YCGU</b>	<b>YCGX</b>	<b>YCBD</b>	<b>LWFI</b>
May-Jul 2017	3,437	77.3	143	4.0	867	19.5	5,126	78.9	176	3.3	1,195	18.4
May-Jul 2018	3,430	77.0	142	4.0	883	19.8	5,149	79.6	151	2.8	1,171	18.1
Aug-Oct 2018	3,450	77.4	143	4.0	863	19.4	5,152	79.7	150	2.8	1,161	18.0
Nov-Jan 2019	3,489	78.3	119	3.3	849	19.0	5,139	79.6	161	3.0	1,156	17.9
Feb-Apr 2019	3,503	78.6	116	3.2	840	18.8	5,133	79.6	159	3.0	1,157	17.9
<b>May-Jul 2019</b>	<b>3,510</b>	<b>78.7</b>	<b>120</b>	<b>3.3</b>	<b>830</b>	<b>18.6</b>	<b>5,125</b>	<b>79.5</b>	<b>146</b>	<b>2.8</b>	<b>1,171</b>	<b>18.2</b>
Change on quarter	7	0.1	4	0.1	-10	-0.2	-8	0.0	-13	-0.2	14	0.2
Change %	0.2		3.7		-1.2		-0.2		-8.1		1.2	
Change on year	80	1.7	-21	-0.7	-52	-1.2	-24	0.0	-4	-0.1	0	0.1
Change %	2.3		-15.2		-5.9		-0.5		-2.7		0.0	
People	Age 50-64						Age 65+					
	Employment		Unemployment		Inactivity		Employment		Unemployment		Inactivity	
	Level	Rate	Level	Rate	Level	Rate	Level	Rate	Level	Rate	Level	Rate
	LF26	LF2U	LF28	LF2E	LF2A	LF2W	LFK4	LFK6	K5HU	K5HW	LFL4	LFL6
May-Jul 2017	8,796	71.1	288	3.2	3,284	26.5	1,157	10.0	25	2.1	10,400	89.8
May-Jul 2018	9,014	71.8	259	2.8	3,281	26.1	1,255	10.7	16	1.3	10,502	89.2
Aug-Oct 2018	9,065	72.0	267	2.9	3,267	25.9	1,245	10.5	15	1.2	10,562	89.3
Nov-Jan 2019	9,139	72.3	272	2.9	3,234	25.6	1,289	10.9	21	1.6	10,560	89.0
Feb-Apr 2019	9,198	72.5	263	2.8	3,228	25.4	1,303	10.9	17	1.3	10,598	88.9
<b>May-Jul 2019</b>	<b>9,258</b>	<b>72.7</b>	<b>259</b>	<b>2.7</b>	<b>3,218</b>	<b>25.3</b>	<b>1,314</b>	<b>11.0</b>	<b>14</b>	<b>1.0</b>	<b>10,640</b>	<b>88.9</b>
Change on quarter	60	0.2	-4	-0.1	-11	-0.2	10	0.0	-4	-0.3	42	0.0
Change %	0.7		-1.7		-0.3		0.8		-21.5		0.4	
Change on year	244	0.9	0	-0.1	-63	-0.9	59	0.3	-3	-0.3	138	-0.3
Change %	2.7		-0.2		-1.9		4.7		-17.5		1.3	
<b>Men</b>	<b>MGUX</b>	<b>YBUN</b>	<b>MGVM</b>	<b>MGXF</b>	<b>MGWB</b>	<b>LWFK</b>	<b>MGVA</b>	<b>YBUQ</b>	<b>MGVP</b>	<b>MGXI</b>	<b>MGWE</b>	<b>LWFN</b>
May-Jul 2017	4,594	75.7	176	3.7	1,302	21.4	705	13.2	16	2.2	4,607	86.5
May-Jul 2018	4,710	76.4	136	2.8	1,315	21.4	745	13.7	9	1.2	4,676	86.1
Aug-Oct 2018	4,730	76.5	145	3.0	1,307	21.1	763	14.0	10	1.3	4,682	85.8
Nov-Jan 2019	4,751	76.6	153	3.1	1,299	20.9	785	14.3	12	1.5	4,683	85.5
Feb-Apr 2019	4,777	76.7	147	3.0	1,301	20.9	790	14.3	10	1.2	4,707	85.5
<b>May-Jul 2019</b>	<b>4,799</b>	<b>76.8</b>	<b>142</b>	<b>2.9</b>	<b>1,306</b>	<b>20.9</b>	<b>763</b>	<b>13.8</b>	<b>9</b>	<b>1.2</b>	<b>4,759</b>	<b>86.0</b>
Change on quarter	22	0.1	-5	-0.1	5	0.0	-27	-0.5	-1	0.0	52	0.6
Change %	0.5		-3.7		0.4		-3.4		-5.3		1.1	
Change on year	89	0.4	6	0.1	-9	-0.4	18	0.1	1	0.0	83	-0.1
Change %	1.9		4.2		-0.7		2.4		5.8		1.8	
<b>Women</b>	<b>LF27</b>	<b>LF2V</b>	<b>LF29</b>	<b>LF2F</b>	<b>LF2B</b>	<b>LF2X</b>	<b>LFK5</b>	<b>LFK7</b>	<b>K5HV</b>	<b>K5HX</b>	<b>LFL5</b>	<b>LFL7</b>
May-Jul 2017	4,202	66.7	112	2.6	1,981	31.5	452	7.2	9	2.1	5,793	92.6
May-Jul 2018	4,304	67.3	123	2.8	1,965	30.7	510	8.0	8	1.5	5,826	91.8
Aug-Oct 2018	4,335	67.6	122	2.7	1,960	30.5	483	7.6	5	1.0	5,880	92.3
Nov-Jan 2019	4,387	68.1	119	2.6	1,934	30.0	504	7.9	9	1.7	5,877	92.0
Feb-Apr 2019	4,421	68.4	116	2.6	1,927	29.8	514	8.0	8	1.4	5,892	91.9
<b>May-Jul 2019</b>	<b>4,459</b>	<b>68.7</b>	<b>117</b>	<b>2.6</b>	<b>1,912</b>	<b>29.5</b>	<b>551</b>	<b>8.6</b>	<b>*</b>	<b>*</b>	<b>5,881</b>	<b>91.4</b>
Change on quarter	38	0.3	1	0.0	-15	-0.3	37	0.5	*	*	-11	-0.5
Change %	0.9		0.9		-0.8		7.2		*	*	-0.2	
Change on year	155	1.4	-6	-0.2	-54	-1.3	41	0.5	*	*	55	-0.5
Change %	3.6		-5.0		-2.7		8.0		*	*	0.9	

Source: Labour Force Survey

Labour market statistics enquiries: labour.market@ons.gov.uk

# EMPLOYMENT AND JOBS

## 3 Full-time, part-time and temporary workers

United Kingdom (thousands of people aged 16 and over) seasonally adjusted

		All in employment					Full-time and part-time workers <sup>1</sup>							Total Workers with second jobs
		Total	Employees	Self employed	Unpaid family workers	Government supported training & employment programmes <sup>2</sup>	Total people working full-time	total people working part-time	Employees working full time	Employees working part time	Self- employed people working full-time	Self- employed people working part-time		
1	2	3	4	5	6	7	8	9	10	11	12			
People	MGRZ	MGRN	MGRQ	MGRT	MGRW	YCBE	YCBH	YCBK	YCBN	YCBQ	YCBT	YCBW		
	May-Jul 2017	32,133	27,105	4,840	111	77	23,579	8,554	20,091	7,015	3,414	1,426	1,125	
	May-Jul 2018	32,408	27,435	4,802	123	47	23,867	8,540	20,487	6,948	3,337	1,465	1,111	
	Aug-Oct 2018	32,492	27,550	4,778	110	53	23,966	8,526	20,575	6,976	3,348	1,431	1,127	
	Nov-Jan 2019	32,714	27,703	4,839	127	45	24,118	8,596	20,667	7,035	3,409	1,430	1,141	
	Feb-Apr 2019	32,746	27,665	4,913	132	37	24,149	8,597	20,632	7,033	3,471	1,442	1,125	
	May-Jul 2019	32,777	27,671	4,928	126	53	24,172	8,605	20,661	7,009	3,456	1,472	1,147	
	Change on quarter	31	6	15	-5	16	22	9	29	-23	-15	30	22	
	Change %	0.1	0.0	0.3	-4.1	43.7	0.1	0.1	0.1	-0.3	-0.4	2.1	2.0	
	Change on year	369	235	125	3	6	304	65	174	61	119	7	37	
	Change %	1.1	0.9	2.6	2.5	12.1	1.3	0.8	0.8	0.9	3.6	0.5	3.3	
Men	MGSA	MGRO	MGRR	MGRU	MGRX	YCBF	YCBI	YCBL	YCBO	YCBR	YCBU	YCBX		
	May-Jul 2017	17,010	13,688	3,235	47	40	14,766	2,244	12,075	1,613	2,651	584	485	
	May-Jul 2018	17,175	13,894	3,195	58	27	14,894	2,281	12,260	1,634	2,610	585	473	
	Aug-Oct 2018	17,240	13,953	3,200	53	34	14,948	2,292	12,301	1,653	2,622	578	470	
	Nov-Jan 2019	17,317	13,995	3,243	54	26	15,037	2,280	12,348	1,647	2,668	575	488	
	Feb-Apr 2019	17,290	13,915	3,289	67	19	15,010	2,280	12,301	1,614	2,686	603	472	
	May-Jul 2019	17,261	13,893	3,276	57	35	15,024	2,237	12,305	1,587	2,683	593	475	
	Change on quarter	-29	-22	-14	-10	16	13	-43	4	-27	-4	-10	3	
	Change %	-0.2	-0.2	-0.4	-14.4	86.7	0.1	-1.9	0.0	-1.7	-0.1	-1.7	0.6	
	Change on year	86	-2	81	-1	8	130	-44	45	-47	73	8	2	
	Change %	0.5	0.0	2.5	-1.4	29.1	0.9	-1.9	0.4	-2.9	2.8	1.4	0.4	
Women	MGSB	MGRP	MGRS	MGRV	MGRY	YCBG	YCBJ	YCBM	YCBP	YCBS	YCBV	YCBY		
	May-Jul 2017	15,123	13,417	1,605	64	37	8,813	6,310	8,016	5,401	763	841	639	
	May-Jul 2018	15,233	13,541	1,607	65	20	8,974	6,259	8,227	5,314	727	880	638	
	Aug-Oct 2018	15,252	13,597	1,579	58	19	9,018	6,234	8,274	5,323	726	853	657	
	Nov-Jan 2019	15,396	13,708	1,596	73	19	9,080	6,316	8,320	5,388	741	855	653	
	Feb-Apr 2019	15,456	13,750	1,624	65	18	9,139	6,317	8,331	5,419	785	839	653	
	May-Jul 2019	15,517	13,778	1,652	69	18	9,148	6,368	8,356	5,422	773	879	673	
	Change on quarter	60	28	28	4	0	9	51	25	3	-12	40	19	
	Change %	0.4	0.2	1.7	6.6	-0.6	0.1	0.8	0.3	0.1	-1.5	4.8	2.9	
	Change on year	284	237	45	4	-2	175	109	129	108	46	-1	35	
	Change %	1.9	1.8	2.8	6.0	-10.7	1.9	1.7	1.6	2.0	6.3	-0.2	5.5	
Temporary employees (reasons for temporary working)														
Part-time workers (reasons for working part-time) <sup>3</sup>														
People	Total	Total as % of all employees	Could not find permanent job	% that could not find permanent job	Did not want permanent job	Had a contract with period of training	Some other reason	Total <sup>4</sup>	Could not find full- time job	% that could not find full- time job	Did not want full- time job	Ill or disabled	Student or at school	
	13	14	15	16	17	18	19	20	21	22	23	24	25	
	YCBZ	YCCC	YCCF	YCCI	YCCL	YCCO	YCCR	YCCU	YCCX	YCDA	YCDD	YCDG	YCDJ	
	May-Jul 2017	1,593	5.9	429	26.9	430	123	611	8,440	1,045	12.4	5,963	262	1,096
	May-Jul 2018	1,530	5.6	420	27.4	432	136	543	8,413	954	11.3	6,021	267	1,114
	Aug-Oct 2018	1,527	5.5	411	26.9	443	117	556	8,407	899	10.7	6,009	287	1,141
	Nov-Jan 2019	1,553	5.6	398	25.6	464	128	563	8,465	932	11.0	6,127	260	1,080
	Feb-Apr 2019	1,486	5.4	375	25.2	446	131	534	8,475	933	11.0	6,121	284	1,072
	May-Jul 2019	1,424	5.1	357	25.0	410	124	533	8,481	890	10.5	6,133	278	1,116
	Change on quarter	-61	-0.2	-18	-0.2	-36	-7	-1	7	-43	-0.5	12	-6	44
	Change %	-4.1		-4.8		-8.0	-5.2	-0.2	0.1	-4.6		0.2	-2.0	4.1
	Change on year	-106	-0.4	-63	-2.4	-22	-12	-9	68	-64	-0.8	112	11	2
	Change %	-6.9		-15.0		-5.1	-8.7	-1.7	0.8	-6.7		1.9	4.1	0.2
Men	YCCA	YCCD	YCCG	YCCJ	YCCM	YCCP	YCCS	YCCV	YCCY	YCDB	YCDE	YCDH	YCDK	
	May-Jul 2017	744	5.4	219	29.5	203	53	268	2,198	454	20.7	1,159	93	466
	May-Jul 2018	732	5.3	223	30.4	190	65	254	2,219	436	19.6	1,176	99	484
	Aug-Oct 2018	728	5.2	215	29.6	198	61	254	2,231	413	18.5	1,194	97	501
	Nov-Jan 2019	712	5.1	202	28.4	197	65	248	2,222	416	18.7	1,246	94	447
	Feb-Apr 2019	679	4.9	198	29.2	190	62	228	2,217	406	18.3	1,260	93	432
	May-Jul 2019	647	4.7	183	28.2	164	60	241	2,180	370	17.0	1,255	92	439
	Change on quarter	-32	-0.2	-16	-1.0	-27	-2	12	-37	-36	-1.3	-5	-1	7
	Change %	-4.7		-7.8		-13.9	-3.7	5.4	-1.7	-8.8		-0.4	-0.7	1.7
	Change on year	-85	-0.6	-40	-2.2	-26	-5	-13	-39	-65	-2.6	79	-6	-44
	Change %	-11.6		-17.9		-13.8	-7.9	-5.3	-1.7	-15.0		6.7	-6.3	-9.2
Women	YCCB	YCCE	YCHH	YCKK	YCCN	YCCQ	YCCT	YCCW	YCCZ	YCDC	YCDE	YCDI	YCDL	
	May-Jul 2017	849	6.3	210	24.7	227	69	343	6,243	590	9.5	4,804	169	630
	May-Jul 2018	798	5.9	197	24.7	242	70	288	6,194	519	8.4	4,846	169	630
	Aug-Oct 2018	798	5.9	196	24.5	245	56	302	6,176	486	7.9	4,815	191	640
	Nov-Jan 2019	841	6.1	196	23.3	268	63	315	6,243	516	8.3	4,881	166	633
	Feb-Apr 2019	806	5.9	176	21.9	256	68	306	6,257	527	8.4	4,861	191	640
	May-Jul 2019	777	5.6	174	22.4	247	64	292	6,301	520	8.3	4,878	186	677
	Change on quarter	-29	-0.2	-2	0.5	-9	-4	-13	43	-7	-0.2	17	-5	36
	Change %	-3.6		-1.3		-3.6	-6.5	-4.4	0.7	-1.3		0.4	-2.7	5.7
	Change on year	-21	-0.3	-23	-2.3	4	-7	4	106	1	-0.1	33	17	47
	Change %	-2.7		-11.8		1.8	-9.3	1.4	1.7	0.2		0.7	10.2	7.4

Relationship between columns: 1= 2+3+4+5; 1=6+7; 2=8+9; 3=10+11; 13=15+17+18+19; 20=9+11; 14=13/2; 16=15/13; 22=21/20

Source: Labour Force Survey

1. The split between full-time and part-time employment is based on respondents' self-classification.

Labour market statistics enquiries: labour.market@ons.gov.uk

2. This series does not include all people on these programmes; it only includes those engaging in any form of work, work experience or work-related training.

3. These series cover Employees and Self-employed only. These series include some temporary employees recorded in columns 13 to 19.

4. The total includes those who did not give a reason for working part-time and it therefore does not equal the sum of columns 21, 23, 24 and 25.

# EMPLOYMENT AND JOBS

## 7 Actual weekly hours worked

United Kingdom (hours worked by people aged 16 and over), seasonally adjusted

	Total weekly hours (millions) <sup>1,2</sup>	Average (mean) actual weekly hours worked			
		All workers <sup>1</sup>	Full-time workers <sup>3</sup>	Part-time workers <sup>3</sup>	Second Jobs
		YBUS	YBUY	YBVB	YBVE
<b>People</b>					
May-Jul 2017	1,033.1	32.2	37.5	16.3	9.3
May-Jul 2018	1,035.2	31.9	37.1	16.2	10.1
Aug-Oct 2018	1,044.8	32.2	37.3	16.3	9.7
Nov-Jan 2019	1,047.5	32.0	37.2	16.2	9.7
Feb-Apr 2019	1,054.1	32.2	37.4	16.3	9.7
<b>May-Jul 2019</b>	<b>1,049.8</b>	<b>32.0</b>	<b>37.2</b>	<b>16.3</b>	<b>9.7</b>
Change on quarter	-4.3	-0.2	-0.2	0.0	0.0
Change %	-0.4	-0.5	-0.7	0.2	-0.4
Change on year	14.5	0.1	0.0	0.2	-0.4
Change %	1.4	0.3	0.0	1.1	-3.9
<b>Men</b>					
May-Jul 2017	623.1	36.6	39.4	16.3	10.2
May-Jul 2018	621.5	36.2	39.0	15.9	11.1
Aug-Oct 2018	628.4	36.5	39.1	16.3	10.6
Nov-Jan 2019	629.5	36.4	39.1	16.3	10.4
Feb-Apr 2019	629.5	36.4	39.1	16.3	10.7
<b>May-Jul 2019</b>	<b>625.8</b>	<b>36.3</b>	<b>38.9</b>	<b>16.4</b>	<b>10.3</b>
Change on quarter	-3.6	-0.1	-0.2	0.1	-0.4
Change %	-0.6	-0.4	-0.6	0.7	-3.5
Change on year	4.4	0.1	-0.1	0.5	-0.7
Change %	0.7	0.2	-0.2	3.1	-6.6
<b>Women</b>					
May-Jul 2017	410.0	27.1	34.3	16.3	8.7
May-Jul 2018	413.8	27.2	34.1	16.3	9.3
Aug-Oct 2018	416.4	27.3	34.2	16.4	9.1
Nov-Jan 2019	418.0	27.2	34.1	16.2	9.1
Feb-Apr 2019	424.6	27.5	34.6	16.3	9.0
<b>May-Jul 2019</b>	<b>423.9</b>	<b>27.3</b>	<b>34.3</b>	<b>16.3</b>	<b>9.2</b>
Change on quarter	-0.7	-0.2	-0.3	0.0	0.2
Change %	-0.2	-0.6	-0.8	0.0	2.5
Change on year	10.1	0.2	0.2	0.1	-0.1
Change %	2.5	0.6	0.5	0.3	-1.3

Source: Labour Force Survey

Labour market statistics enquiries: labour.market@ons.gsi.gov.uk

1 Main and second job

2 Total actual weekly hours worked including paid and unpaid overtime.

3 Main job only. The split between full-time and part-time employment is based on respondents' self-classification.

## 7 (1) Usual weekly hours of work<sup>1</sup>

United Kingdom, seasonally adjusted

	All in Employment (%)			Employees (%)			Self-Employed (%)		
	People	Men	Women	People	Men	Women	People	Men	Women
<b>May-Jul 2018</b>									
Less than 6 Hours	1.4	0.9	1.9	0.8	0.5	1.2	3.4	1.9	6.4
6 up to 15 hours	6.4	3.5	9.7	5.8	3.0	8.6	9.8	5.2	19.0
16 up to 30 hours	20.0	10.2	31.0	19.6	9.0	30.5	22.3	15.5	35.7
31 up to 45 hours	54.0	59.7	47.6	56.9	63.1	50.5	38.5	45.5	24.5
Over 45 hours	18.2	25.6	9.8	16.9	24.3	9.3	26.1	31.9	14.4
Total (thousands)	32,408	17,175	15,233	27,435	13,894	13,541	4,802	3,195	1,607
<b>Feb-Apr 2019</b>									
Less than 6 Hours	1.4	0.9	2.0	1.0	0.6	1.4	3.2	1.8	6.0
6 up to 15 hours	6.2	3.4	9.3	5.6	2.9	8.3	9.0	5.0	17.0
16 up to 30 hours	20.0	10.5	30.7	19.5	9.0	30.2	23.0	16.8	35.5
31 up to 45 hours	53.9	59.5	47.6	56.7	63.1	50.2	38.5	44.8	25.8
Over 45 hours	18.5	25.7	10.4	17.2	24.5	9.8	26.3	31.5	15.7
Total (thousands)	32,746	17,290	15,456	27,665	13,915	13,750	4,913	3,289	1,624
<b>May-Jul 2019</b>									
Less than 6 Hours	1.5	1.0	2.1	1.0	0.6	1.3	3.6	1.9	6.9
6 up to 15 hours	6.3	3.4	9.6	5.7	2.9	8.6	9.3	5.3	17.4
16 up to 30 hours	19.8	10.2	30.6	19.4	8.9	30.0	22.3	15.4	35.9
31 up to 45 hours	54.0	60.0	47.2	56.8	63.6	49.9	38.3	44.9	25.2
Over 45 hours	18.4	25.5	10.5	17.0	24.0	10.1	26.5	32.5	14.6
Total (thousands)	32,777	17,261	15,517	27,671	13,893	13,778	4,928	3,276	1,652

1 Total usual weekly hours worked by people aged 16 and over in main job including paid and unpaid overtime.

Source: Labour Force Survey

Labour market statistics enquiries: labour.market@ons.gov.uk

NON-UK WORKERS

8(1) Employment levels and rates by country of birth and nationality

(first published on 13 August 2019)

United Kingdom (thousands of people aged 16 and over) not seasonally adjusted																				
Country of birth	Europe										Africa		Asia			America and Oceania				
	European Union (EU)										Other Europe (not in EU)	Total Africa	Of which: South Africa	Total Asia	Of which: India	Of which: Pakistan and Bangladesh	Total America and Oceania	Of which: USA	Of which: Australia and New Zealand	Total Non-EU <sup>7</sup>
	Total <sup>1</sup>	UK	Non UK	Total Europe	Total EU (EU27) <sup>2</sup>	EU14 <sup>3</sup>	EU8 <sup>4</sup>	EU2 <sup>5</sup>	Other EU <sup>6</sup>											
	Levels (aged 16 and over)																			
Country of birth	MGTM	JF6F	JF6G	FSC2	EQ4Q	JJR3	JJR5	EQ4R	FSC3	FSC4	FSC5	JJS3	FSC6	JJS7	JJS9	FSC7	JJR7	JJS5	EQ4S	
Apr - Jun 2017	31,996	26,345	5,648	2,595	2,366	972	1,004	358	31	230	981	212	1,527	438	380	546	82	137	3,283	
Apr - Jun 2018	32,321	26,720	5,597	2,575	2,350	1,014	906	391	38	225	877	168	1,508	503	341	638	100	156	3,248	
Jul - Sep 2018	32,503	26,963	5,532	2,517	2,288	978	901	370	39	229	878	159	1,479	473	337	658	96	152	3,244	
Oct - Dec 2018	32,671	27,011	5,651	2,550	2,303	989	886	384	43	248	893	174	1,568	476	344	640	107	130	3,349	
Jan - Mar 2019	32,641	26,838	5,796	2,666	2,420	994	947	438	41	246	933	200	1,536	452	366	662	108	139	3,376	
Apr - Jun 2019	32,752	26,967	5,777	2,692	2,438	1,019	971	407	41	254	923	198	1,504	475	387	658	105	167	3,339	
Change on year	430	246	180	118	88	5	64	15	3	29	46	31	-4	-28	46	20	5	11	91	
Change %	1.3	0.9	3.2	4.6	3.8	0.5	7.1	3.9	8.4	13.1	5.3	18.4	-0.3	-5.6	13.3	3.1	4.6	7.2	2.8	
Nationality	MGTM	JF6H	JF6I	FSC8	EQ4U	JJR4	JJR6	EQ4V	FSC9	FSCE	FSD2	JJS4	FSD3	JJS8	JJT2	FSD4	JJR8	JJS6	EQ4W	
Apr - Jun 2017	31,996	28,454	3,537	2,444	2,349	1,010	995	332	11	96	314	76	508	161	95	271	74	81	1,189	
Apr - Jun 2018	32,321	28,787	3,527	2,373	2,269	990	881	387	11	103	262	55	569	211	101	324	92	103	1,258	
Jul - Sep 2018	32,503	29,028	3,467	2,341	2,231	980	880	360	11	109	249	50	545	187	91	332	100	86	1,236	
Oct - Dec 2018	32,671	29,098	3,569	2,400	2,274	1,011	869	370	24	126	277	64	593	194	107	299	96	71	1,295	
Jan - Mar 2019	32,641	28,943	3,698	2,513	2,381	1,018	925	423	16	132	273	71	597	182	115	315	101	75	1,317	
Apr - Jun 2019	32,752	29,084	3,661	2,490	2,368	1,019	952	375	22	122	289	63	567	187	121	314	78	95	1,292	
Change on year	430	298	133	118	99	29	71	-12	11	18	28	8	-2	-23	20	-10	-14	-9	34	
Change %	1.3	1.0	3.8	5.0	4.4	3.0	8.1	-3.1	95.5	17.8	10.6	13.7	-0.4	-11.1	20.0	-3.1	-14.9	-8.4	2.7	
Rates (aged 16 to 64)																				
Country of birth	LF9D	LFM6	LFM7	FSD5	EQ4Y	LFM8	LFM9	EQ4Z	FSD6	FSD7	FSD8	LFN4	FSD9	LFN6	LFN7	FSE2	LFN2	LFN5	EQ52	
Apr - Jun 2017	74.9	75.5	72.5	79.2	80.6	77.6	82.6	84.7	68.1	67.3	72.4	85.9	62.5	72.7	54.1	76.2	73.1	84.7	67.6	
Apr - Jun 2018	75.4	75.7	74.0	81.2	82.8	79.5	86.8	83.3	72.5	68.3	72.1	83.0	64.2	80.3	54.4	76.6	73.4	85.4	68.7	
Jul - Sep 2018	75.7	76.1	74.2	81.5	82.3	79.7	85.6	82.4	72.2	74.6	72.9	83.5	64.4	77.0	55.5	75.7	74.2	81.5	69.3	
Oct - Dec 2018	76.0	76.3	74.7	81.6	82.6	79.8	86.1	83.5	71.8	73.0	73.3	84.7	65.5	75.5	55.9	77.6	79.1	85.7	70.1	
Jan - Mar 2019	75.9	76.3	74.6	81.8	82.8	80.1	85.1	84.6	79.1	72.7	73.1	88.2	64.6	75.3	57.6	77.8	78.4	84.7	69.7	
Apr - Jun 2019	76.0	76.3	74.6	82.2	83.1	80.2	85.2	86.2	78.3	74.4	73.2	87.4	63.4	75.5	59.0	78.6	73.9	87.7	69.3	
Change on year	0.6	0.5	0.6	1.0	0.4	0.7	-1.6	2.9	5.8	6.1	1.1	4.4	-0.8	-4.8	4.7	2.1	0.5	2.3	0.7	
Nationality	LF9D	LFN8	LFN9	FSE3	EQ54	LFO2	LFO3	EQ55	FSE4	FSE5	FSE6	LFO6	FSE7	LFO8	LFO9	FSE8	LFO4	LFO7	EQ56	
Apr - Jun 2017	74.9	75.2	72.8	79.8	80.8	77.9	83.1	84.3	53.1	60.9	66.8	86.3	53.2	65.2	48.7	73.5	70.7	86.9	60.9	
Apr - Jun 2018	75.4	75.5	74.5	81.5	83.0	80.3	87.0	83.1	46.7	58.3	67.6	89.5	56.4	79.3	49.0	75.5	72.2	86.0	62.8	
Jul - Sep 2018	75.7	75.8	75.0	82.1	82.8	80.6	86.5	82.6	39.6	69.8	68.4	87.1	56.0	72.2	46.7	77.1	76.9	80.5	64.1	
Oct - Dec 2018	76.0	76.0	75.8	82.6	83.3	81.0	86.0	84.5	68.9	72.3	70.5	86.6	58.3	69.7	48.4	77.0	73.7	86.1	65.6	
Jan - Mar 2019	75.9	76.1	75.3	82.1	82.7	79.9	85.0	84.9	75.0	72.9	68.8	91.4	57.2	70.6	50.9	76.9	78.3	82.7	64.8	
Apr - Jun 2019	76.0	76.1	75.0	82.5	83.3	80.8	85.0	85.9	83.7	69.5	70.7	90.2	54.3	69.3	53.8	76.8	73.1	86.3	63.4	
Change on year	0.6	0.6	0.5	1.0	0.3	0.5	-2.0	2.8	36.9	11.2	3.0	0.7	-2.1	-10.0	4.9	1.3	0.9	0.3	0.6	

Source: Labour Force Survey

Labour market statistics enquiries: [labour.market@ons.gov.uk](mailto:labour.market@ons.gov.uk)

1. The total series includes people who do not state their country of birth or nationality. The total levels series MGTM does not therefore equal the sum of the "UK" and "Non-UK" series.

2. This series consists of all 27 EU member states excluding the UK. This series equals the sum of EU14, EU8, EU2 and Other EU.

3. Austria, Belgium, Denmark, Finland, France, Germany, Greece, Ireland, Italy, Luxembourg, Netherlands, Portugal, Spain and Sweden.

4. Czech Republic, Estonia, Hungary, Latvia, Lithuania, Poland, Slovak Republic and Slovenia.

5. Romania and Bulgaria.

6. Cyprus, Malta and Croatia

7. Total Non-EU equals the sum of Other Europe, Total Africa, Total Asia and Total America and Oceania

The estimates shown in this table relate to the number of people in employment and should not be used as a proxy for flows of foreign migrants into the UK.

# NON-UK WORKERS

## 8(2) Unemployment and economic inactivity levels and rates by country of birth and nationality (first published on 13 August 2019)

United Kingdom (thousands of people) not seasonally adjusted

	Unemployment (all aged 16 and over)					Economically inactive (all aged from 16 to 64)									
	Total <sup>1</sup>	UK	Non-UK	EU27 <sup>2</sup>	Non-EU	Total <sup>1</sup>		UK		Non-UK		EU27 <sup>2</sup>		Non-EU	
						All economically inactive	Of which: Students <sup>3</sup>	All economically inactive	Of which: Students <sup>3</sup>	All economically inactive	Of which: Students <sup>3</sup>	All economically inactive	Of which: Students <sup>3</sup>	All economically inactive	Of which: Students <sup>3</sup>
Levels (thousands of people)															
By country of birth	MGTP	DSWD	DT35	DT3F	DTKB	LF9L	LF9W	DTLK	DYUP	DYUR	DYVR	DYVZ	DYWL	DYWR	DZ37
Apr - Jun 2017	1,456	1,142	314	97	217	8,875	2,431	7,080	1,882	1,783	548	467	166	1,315	382
Apr - Jun 2018	1,332	1,068	264	79	186	8,834	2,454	7,150	1,926	1,666	525	403	147	1,263	378
Jul - Sep 2018	1,446	1,156	291	85	206	8,589	2,145	6,973	1,711	1,600	431	400	136	1,200	296
Oct - Dec 2018	1,328	1,068	260	78	182	8,598	2,228	6,957	1,757	1,623	470	399	161	1,224	309
Jan - Mar 2019	1,292	1,013	279	84	195	8,663	2,373	6,992	1,851	1,654	521	409	159	1,245	362
Apr - Jun 2019	1,296	1,015	280	74	206	8,659	2,350	7,006	1,864	1,640	485	414	159	1,226	327
Change on year	-36	-53	16	-5	21	-175	-104	-144	-62	-26	-40	11	12	-38	-51
Change %	-2.7	-5.0	6.0	-6.0	11.1	-2.0	-4.2	-2.0	-3.2	-1.6	-7.6	2.8	8.0	-3.0	-13.6
By nationality	MGTP	DSWE	DT39	DTG9	DTKC	LF9L	LF9W	DYTC	DYUQ	DYUS	DYVU	DYWA	DYWM	DYWS	DZGD
Apr - Jun 2017	1,456	1,258	198	99	99	8,875	2,431	7,753	2,029	1,113	401	455	168	658	233
Apr - Jun 2018	1,332	1,172	160	72	89	8,834	2,454	7,782	2,080	1,036	372	387	143	649	229
Jul - Sep 2018	1,446	1,276	170	80	90	8,589	2,145	7,602	1,846	973	297	378	132	596	165
Oct - Dec 2018	1,328	1,154	173	76	97	8,598	2,228	7,630	1,892	954	335	377	165	577	170
Jan - Mar 2019	1,292	1,107	185	86	99	8,663	2,373	7,631	1,982	1,018	390	409	166	609	223
Apr - Jun 2019	1,296	1,110	186	71	114	8,659	2,350	7,621	1,981	1,023	366	399	162	624	204
Change on year	-36	-62	25	0	25	-175	-104	-161	-98	-13	-6	13	19	-26	-25
Change %	-2.7	-5.3	15.9	-0.1	28.8	-2.0	-4.2	-2.1	-4.7	-1.2	-1.7	3.3	13.3	-3.9	-11.1
Rates (%)															
By country of birth	MGUK	DT2W	DT3B	DTJG	DTKD	CRZK		DYTD		DYUT		DYWD		DYWT	
Apr - Jun 2017	4.4	4.2	5.3	4.0	6.2	21.6		21.1		23.4		16.1		27.9	
Apr - Jun 2018	4.0	3.8	4.5	3.2	5.4	21.4		21.1		22.5		14.4		27.4	
Jul - Sep 2018	4.3	4.1	5.0	3.6	6.0	20.8		20.6		21.9		14.6		26.2	
Oct - Dec 2018	3.9	3.8	4.4	3.3	5.1	20.8		20.6		21.9		14.6		26.1	
Jan - Mar 2019	3.8	3.6	4.6	3.4	5.5	21.0		20.8		21.8		14.3		26.3	
Apr - Jun 2019	3.8	3.6	4.6	2.9	5.8	21.0		20.8		21.7		14.4		26.3	
Change on year	-0.2	-0.2	0.1	-0.3	0.4	-0.5		-0.4		-0.8		-0.1		-1.1	
By nationality	MGUK	DT2Z	DT3D	DTKA	DTLH	CRZK		DYUO		DYUU		DYWE		DZ36	
Apr - Jun 2017	4.4	4.2	5.3	4.0	7.7	21.6		21.3		23.1		15.8		34.1	
Apr - Jun 2018	4.0	3.9	4.3	3.1	6.6	21.4		21.3		22.1		14.3		32.8	
Jul - Sep 2018	4.3	4.2	4.7	3.5	6.8	20.8		20.7		21.3		14.2		31.3	
Oct - Dec 2018	3.9	3.8	4.6	3.2	7.0	20.8		20.8		20.5		14.0		29.5	
Jan - Mar 2019	3.8	3.7	4.8	3.5	7.0	21.0		20.9		21.0		14.4		30.3	
Apr - Jun 2019	3.8	3.7	4.8	2.9	8.1	21.0		20.9		21.2		14.2		31.0	
Change on year	-0.2	-0.2	0.5	-0.1	1.5	-0.5		-0.4		-1.0		-0.1		-1.8	

Source: Labour Force Survey  
Labour market statistics enquiries: [labour.market@ons.gov.uk](mailto:labour.market@ons.gov.uk)

1. The total series includes people who do not state their country of birth or nationality. The total levels series therefore do not equal the sum of the "UK" and "Non-UK" series.
2. This series consists of all 27 EU member states excluding the UK.
3. This series consists of those people whose main reason for being economically inactive was because they were students. It does not include all students as some students will be included in the employment and unemployment estimates.

# UNEMPLOYMENT

## 9(1) Unemployment by age and duration

United Kingdom (thousands) seasonally adjusted

		All aged 16 & over							All aged 16 - 64						
People		All	Rate (%) <sup>1</sup>	Up to 6 months	Over 6 and up to 12 months	All over 12 months	% over 12 months	All over 24 months	All	Rate (%) <sup>1</sup>	Up to 6 months	Over 6 and up to 12 months	All over 12 months	% over 12 months	All over 24 months
		1	2	3	4	5	6	7	8	9	10	11	12	13	14
		MGSC	MG SX	YBWF	YBWG	YBWH	YBWI	YBWL	LF2I	LF2Q	LF2Y	LF32	LF34	LF36	LF38
	May-Jul 2017	1,457	4.3	837	239	382	26.2	207	1,432	4.4	831	231	369	25.8	204
	May-Jul 2018	1,358	4.0	795	207	356	26.2	188	1,341	4.1	789	203	349	26.0	188
	Aug-Oct 2018	1,373	4.1	802	219	352	25.7	185	1,358	4.2	792	217	349	25.7	184
	Nov-Jan 2019	1,338	3.9	786	205	347	25.9	169	1,317	4.0	772	202	344	26.1	166
	Feb-Apr 2019	1,304	3.8	779	178	347	26.6	168	1,287	3.9	773	177	337	26.2	163
	<b>May-Jul 2019</b>	<b>1,294</b>	<b>3.8</b>	<b>786</b>	<b>180</b>	<b>327</b>	<b>25.3</b>	<b>171</b>	<b>1,280</b>	<b>3.9</b>	<b>782</b>	<b>179</b>	<b>320</b>	<b>25.0</b>	<b>167</b>
	Change on quarter	-11	0.0	8	2	-20	-1.3	3	-7	0.0	8	2	-17	-1.2	4
	Change %	-0.8		1.0	1.0	-5.8		1.5	-0.5		1.1	1.0	-5.0		2.5
	Change on year	-64	-0.2	-9	-27	-29	-0.9	-18	-61	-0.2	-8	-24	-29	-1.0	-21
	Change %	-4.7		-1.1	-12.9	-8.1		-9.4	-4.6		-1.0	-11.9	-8.4		-10.9
Men		MGSD	MG SY	MGYK	MGYM	MGYO	YBWJ	YBWM	YBSI	YBTJ	YBWP	YBWS	YBWW	YBWX	YBXB
	May-Jul 2017	791	4.4	422	139	231	29.2	135	775	4.5	418	135	223	28.8	134
	May-Jul 2018	718	4.0	398	108	213	29.6	118	709	4.1	394	106	209	29.5	117
	Aug-Oct 2018	744	4.1	407	119	217	29.2	117	734	4.3	401	119	214	29.2	116
	Nov-Jan 2019	728	4.0	396	120	212	29.1	111	716	4.1	389	118	209	29.2	108
	Feb-Apr 2019	719	4.0	401	103	214	29.8	107	709	4.1	399	102	208	29.3	106
	<b>May-Jul 2019</b>	<b>710</b>	<b>4.0</b>	<b>402</b>	<b>106</b>	<b>202</b>	<b>28.5</b>	<b>110</b>	<b>701</b>	<b>4.1</b>	<b>399</b>	<b>105</b>	<b>197</b>	<b>28.1</b>	<b>107</b>
	Change on quarter	-8	0.0	0	3	-12	-1.3	2	-8	0.0	0	3	-11	-1.2	1
	Change %	-1.2		0.1	2.9	-5.4		2.1	-1.1		0.1	2.9	-5.3		0.7
	Change on year	-8	-0.1	4	-1	-10	-1.1	-8	-8	-0.1	5	-1	-12	-1.4	-10
	Change %	-1.1		0.9	-1.2	-4.8		-6.8	-1.2		1.2	-1.1	-5.8		-8.8
Women		MGSE	MG SZ	MGYL	MGYN	MGYP	YBWK	YBWN	LF2J	LF2R	LF2Z	LF33	LF35	LF37	LF39
	May-Jul 2017	666	4.2	415	100	151	22.6	72	656	4.3	414	97	146	22.3	69
	May-Jul 2018	640	4.0	397	99	143	22.4	71	632	4.1	395	97	140	22.2	71
	Aug-Oct 2018	629	4.0	394	100	135	21.5	68	625	4.1	391	98	135	21.6	68
	Nov-Jan 2019	611	3.8	390	85	135	22.1	58	602	3.9	383	84	135	22.4	58
	Feb-Apr 2019	586	3.7	377	75	133	22.7	61	578	3.7	374	75	129	22.3	57
	<b>May-Jul 2019</b>	<b>583</b>	<b>3.6</b>	<b>385</b>	<b>74</b>	<b>125</b>	<b>21.4</b>	<b>61</b>	<b>579</b>	<b>3.7</b>	<b>382</b>	<b>74</b>	<b>123</b>	<b>21.3</b>	<b>60</b>
	Change on quarter	-2	0.0	8	-1	-9	-1.4	0	1	0.0	8	-1	-6	-1.0	3
	Change %	-0.4		2.0	-1.6	-6.5		0.6	0.2		2.1	-1.5	-4.5		5.8
	Change on year	-56	-0.4	-12	-25	-19	-1.0	-10	-53	-0.4	-13	-23	-17	-0.9	-10
	Change %	-8.8		-3.1	-25.6	-12.9		-13.7	-8.4		-3.2	-23.8	-12.2		-14.5
		16-17							18-24						
People		All	Rate (%) <sup>1</sup>	Up to 6 months	Over 6 and up to 12 months	All over 12 months	% over 12 months	All over 24 months	All	Rate (%) <sup>1</sup>	Up to 6 months	Over 6 and up to 12 months	All over 12 months	% over 12 months	All over 24 months
		15	16	17	18	19	20	21	22	23	24	25	26	27	28
		YBVH	YBVK	YBXD	YBXG	YBXJ	YBXM	YBXP	YBVN	YBVQ	YBXS	YBXV	YBXY	YBYB	YBYE
	May-Jul 2017	107	24.1	83	19	6	5.7	*	425	10.7	275	77	73	17.1	30
	May-Jul 2018	100	22.4	77	15	7	7.5	*	389	10.0	256	62	71	18.2	24
	Aug-Oct 2018	95	22.8	71	20	*	*	*	400	10.2	268	63	69	17.3	25
	Nov-Jan 2019	91	22.2	73	12	6	6.3	*	409	10.4	272	65	73	17.8	20
	Feb-Apr 2019	86	20.3	68	10	8	9.5	*	394	10.2	269	60	65	16.5	14
	<b>May-Jul 2019</b>	<b>84</b>	<b>19.3</b>	<b>63</b>	<b>16</b>	<b>5</b>	<b>5.8</b>	<b>*</b>	<b>404</b>	<b>10.5</b>	<b>275</b>	<b>56</b>	<b>72</b>	<b>17.8</b>	<b>21</b>
	Change on quarter	-3	-1.0	-5	6	-3	-3.7	*	10	0.3	7	-4	7	1.3	6
	Change %	-3.0		-7.7	61.8	-41.1		*	2.5		2.6	-6.6	10.6		45.0
	Change on year	-17	-3.1	-14	0	-3	-1.7	*	15	0.5	20	-6	1	-0.4	-4
	Change %	-16.5		-18.3	2.0	-35.6		*	3.9		7.8	-9.4	1.8		-15.1
Men		YBVI	YBVL	YBXE	YBXH	YBXK	YBXN	YBXQ	YBVO	YBVR	YBXT	YBXW	YBXZ	YBYC	YBYF
	May-Jul 2017	58	26.8	47	8	*	*	*	249	12.1	145	55	49	19.7	21
	May-Jul 2018	49	22.1	36	9	*	*	*	223	10.9	141	35	47	21.1	16
	Aug-Oct 2018	55	26.1	40	11	*	*	*	231	11.1	146	35	50	21.8	19
	Nov-Jan 2019	48	23.6	37	6	5	9.6	*	250	12.0	158	40	52	20.7	16
	Feb-Apr 2019	45	22.1	36	*	5	10.8	*	248	12.3	163	41	44	17.7	11
	<b>May-Jul 2019</b>	<b>46</b>	<b>22.0</b>	<b>34</b>	<b>8</b>	<b>*</b>	<b>*</b>	<b>*</b>	<b>246</b>	<b>12.3</b>	<b>155</b>	<b>41</b>	<b>50</b>	<b>20.4</b>	<b>15</b>
	Change on quarter	1	-0.1	-2	*	*	*	*	-2	0.0	-8	-1	6	2.7	4
	Change %	2.1		-6.2	*	*	*	*	-1.0		-4.9	-1.5	14.1		42.2
	Change on year	-3	-0.1	-2	-1	*	*	*	23	1.4	14	6	3	-0.6	-1
	Change %	-5.8		-5.6	-7.1	*	*	*	10.2		9.6	17.3	6.9		-6.9
Women		YBVJ	YBVM	YBXF	YBXI	YBXL	YBXO	YBXR	YBVP	YBVS	YBXU	YBXX	YBYA	YBYD	YBYG
	May-Jul 2017	49	21.5	36	10	*	*	*	176	9.3	130	22	24	13.5	9
	May-Jul 2018	51	22.6	42	6	*	*	*	166	9.0	114	27	24	14.4	8
	Aug-Oct 2018	40	19.5	31	9	*	*	*	169	9.2	123	27	19	11.2	6
	Nov-Jan 2019	43	20.8	36	6	*	*	*	159	8.5	114	24	21	13.2	*
	Feb-Apr 2019	41	18.6	32	5	*	*	*	146	7.9	106	19	21	14.5	*
	<b>May-Jul 2019</b>	<b>37</b>	<b>16.7</b>	<b>29</b>	<b>7</b>	<b>*</b>	<b>*</b>	<b>*</b>	<b>158</b>	<b>8.6</b>	<b>121</b>	<b>16</b>	<b>22</b>	<b>13.8</b>	<b>6</b>
	Change on quarter	-4	-1.9	-3	2	*	*	*	12	0.7	15	-3	1	-0.7	*
	Change %	-8.7		-9.3	38.7	*	*	*	8.3		14.0	-17.7	3.3		*
	Change on year	-14	-5.9	-12	1	*	*	*	-8	-0.5	6	-12	-2	-0.6	-3
	Change %	-26.7		-29.2	14.9	*	*	*	-4.6		5.4	-43.0	-8.3		-31.3

Relationship between columns: 1=3+4+5; 8=10+11+12; 15=17+18+19; 22=24+25+26.

<sup>1</sup>Denominator = economically active for that age group.

Source: Labour Force Survey

Labour market statistics enquiries: labour.market@ons.gov.uk

# UNEMPLOYMENT

## 9(2) Unemployment by age and duration

United Kingdom (thousands) seasonally adjusted

		25-49							50 and over						
		All	Rate (%) <sup>1</sup>	Up to 6 months	Over 6 and up to 12 months	All over 12 months	% over 12 months	All over 24 months	All	Rate (%) <sup>1</sup>	Up to 6 months	Over 6 and up to 12 months	All over 12 months	% over 12 months	All over 24 months
		1	2	3	4	5	6	7	8	9	10	11	12	13	14
		MGVI	MGXB	YBYH	YBYK	YBYN	YBYQ	YBYT	YBVT	YBVW	YBYW	YBYZ	YBZC	YBZF	YBZI
People	May-Jul 2017	611	3.2	336	88	186	30.5	105	313	3.1	142	54	117	37.2	71
	May-Jul 2018	593	3.1	332	84	178	30.0	103	275	2.6	131	46	99	36.0	61
	Aug-Oct 2018	596	3.1	335	91	170	28.5	92	282	2.7	127	45	110	38.8	67
	Nov-Jan 2019	546	2.9	306	85	154	28.3	84	293	2.7	136	43	114	38.8	66
	Feb-Apr 2019	544	2.9	314	71	159	29.3	87	280	2.6	128	38	115	41.0	67
	<b>May-Jul 2019</b>	<b>534</b>	<b>2.8</b>	<b>313</b>	<b>69</b>	<b>152</b>	<b>28.5</b>	<b>86</b>	<b>272</b>	<b>2.5</b>	<b>135</b>	<b>40</b>	<b>98</b>	<b>36.0</b>	<b>62</b>
	Change on quarter	-10	0.0	-1	-2	-7	-0.8	-1	-8	-0.1	7	2	-17	-5.0	-5
	Change %	-1.8		-0.2	-3.0	-4.4		-0.9	-2.9		5.3	5.1	-14.7		-7.2
	Change on year	-60	-0.3	-18	-15	-26	-1.6	-17	-3	-0.1	4	-6	-1	0.0	2
	Change %	-10.0		-5.5	-18.0	-14.7		-16.4	-1.2		3.0	-13.3	-1.2		3.0
Men	May-Jul 2017	292	2.9	146	44	101	34.7	65	192	3.5	83	31	77	40.3	49
	May-Jul 2018	301	3.0	158	39	105	34.7	68	145	2.6	63	25	57	39.3	33
	Aug-Oct 2018	303	3.0	156	50	97	32.0	58	155	2.8	66	23	66	42.7	38
	Nov-Jan 2019	265	2.6	130	48	86	32.5	57	165	2.9	71	25	69	41.7	38
	Feb-Apr 2019	268	2.7	142	36	91	33.8	56	157	2.7	61	22	74	47.4	40
	<b>May-Jul 2019</b>	<b>267</b>	<b>2.7</b>	<b>145</b>	<b>33</b>	<b>89</b>	<b>33.4</b>	<b>53</b>	<b>151</b>	<b>2.6</b>	<b>68</b>	<b>24</b>	<b>59</b>	<b>39.0</b>	<b>41</b>
	Change on quarter	-1	0.0	3	-3	-2	-0.5	-4	-6	-0.1	7	2	-15	-8.4	1
	Change %	-0.4		2.2	-7.2	-1.7		-6.6	-3.8		12.0	10.3	-20.8		2.3
	Change on year	-34	-0.3	-13	-5	-15	-1.3	-15	6	0.1	5	-1	2	-0.4	8
	Change %	-11.3		-8.5	-14.1	-14.6		-22.5	4.3		8.8	-4.6	3.4		23.4
Women	May-Jul 2017	319	3.6	190	44	85	26.6	40	121	2.5	59	23	39	32.3	22
	May-Jul 2018	292	3.3	173	45	74	25.3	35	131	2.6	68	21	42	32.4	27
	Aug-Oct 2018	293	3.3	179	41	73	24.8	34	127	2.6	62	22	43	34.0	29
	Nov-Jan 2019	281	3.2	176	37	68	24.3	27	127	2.5	65	18	45	35.1	28
	Feb-Apr 2019	275	3.1	172	35	68	24.8	31	124	2.4	67	16	41	32.9	27
	<b>May-Jul 2019</b>	<b>267</b>	<b>3.0</b>	<b>168</b>	<b>35</b>	<b>63</b>	<b>23.6</b>	<b>33</b>	<b>121</b>	<b>2.4</b>	<b>66</b>	<b>16</b>	<b>39</b>	<b>32.4</b>	<b>21</b>
	Change on quarter	-9	-0.1	-4	0	-5	-1.2	3	-2	-0.1	0	0	-1	-0.5	-6
	Change %	-3.1		-2.1	1.3	-7.9		9.4	-1.8		-0.7	-2.1	-3.3		-21.4
	Change on year	-25	-0.3	-5	-10	-11	-1.7	-2	-10	-0.3	-2	-5	-3	0.0	-6
	Change %	-8.7		-2.8	-21.4	-14.9		-4.5	-7.3		-2.2	-24.0	-7.3		-22.0

Relationship between columns: 1=3+4+5; 8=10+11+12.

<sup>1</sup>Denominator = economically active for that age group.

Source: Labour Force Survey

Labour market statistics enquiries: labour.market@ons.gov.uk



# ECONOMIC ACTIVITY AND INACTIVITY

## 10 Economic activity by age

United Kingdom (thousands) seasonally adjusted

All aged 16 & over	16 - 64	16 - 17	18 - 24	25 - 34	35 - 49	50 - 64	65+
1	2	3	4	5	6	7	8

### Economically active

People	MGSF	LF2K	YBZL	YBZO	YBZR	YBZU	LF3A	LFK8
May-Jul 2017	33,590	32,408	446	3,972	7,718	11,188	9,084	1,182
May-Jul 2018	33,765	32,494	449	3,875	7,727	11,170	9,273	1,272
Aug-Oct 2018	33,865	32,605	416	3,913	7,759	11,183	9,332	1,260
Nov-Jan 2019	34,052	32,742	409	3,949	7,792	11,181	9,411	1,310
Feb-Apr 2019	34,050	32,730	425	3,864	7,815	11,165	9,461	1,321
<b>May-Jul 2019</b>	<b>34,071</b>	<b>32,743</b>	<b>435</b>	<b>3,834</b>	<b>7,822</b>	<b>11,137</b>	<b>9,517</b>	<b>1,327</b>
Change on quarter	20	14	9	-31	7	-28	56	7
Change %	0.1	0.0	2.2	-0.8	0.1	-0.2	0.6	0.5
Change on year	305	250	-14	-41	95	-33	243	56
Change %	0.9	0.8	-3.1	-1.1	1.2	-0.3	2.6	4.4

Men	MGSG	YBSL	YBZM	YBZP	YBZS	YBZV	YBZY	YCAE
May-Jul 2017	17,801	17,080	217	2,068	4,138	5,886	4,771	721
May-Jul 2018	17,893	17,139	223	2,045	4,155	5,870	4,846	754
Aug-Oct 2018	17,984	17,211	210	2,078	4,167	5,881	4,875	773
Nov-Jan 2019	18,045	17,248	202	2,077	4,183	5,881	4,904	797
Feb-Apr 2019	18,009	17,209	205	2,012	4,196	5,872	4,924	800
<b>May-Jul 2019</b>	<b>17,971</b>	<b>17,198</b>	<b>210</b>	<b>1,991</b>	<b>4,191</b>	<b>5,866</b>	<b>4,940</b>	<b>773</b>
Change on quarter	-38	-11	5	-21	-5	-7	17	-27
Change %	-0.2	-0.1	2.5	-1.1	-0.1	-0.1	0.3	-3.4
Change on year	78	60	-12	-54	36	-5	94	19
Change %	0.4	0.3	-5.6	-2.6	0.9	-0.1	1.9	2.5

Women	MGSF	LF2L	YBZN	YBZQ	YBZT	YBZW	LF3B	LFK9
May-Jul 2017	15,789	15,328	228	1,904	3,580	5,302	4,314	461
May-Jul 2018	15,873	15,355	226	1,830	3,572	5,300	4,427	518
Aug-Oct 2018	15,881	15,394	207	1,835	3,593	5,302	4,457	487
Nov-Jan 2019	16,007	15,494	207	1,872	3,609	5,300	4,506	513
Feb-Apr 2019	16,042	15,521	220	1,853	3,619	5,292	4,537	521
<b>May-Jul 2019</b>	<b>16,100</b>	<b>15,545</b>	<b>224</b>	<b>1,843</b>	<b>3,630</b>	<b>5,271</b>	<b>4,576</b>	<b>555</b>
Change on quarter	58	24	4	-10	12	-21	39	34
Change %	0.4	0.2	1.9	-0.5	0.3	-0.4	0.9	6.5
Change on year	227	190	-2	13	58	-28	149	37
Change %	1.4	1.2	-0.7	0.7	1.6	-0.5	3.4	7.2

### Economic activity rates (%)<sup>1</sup>

People	MGWG	LF22	YCAC	YCAJ	YCAM	YCAP	LF2C	LFL2
May-Jul 2017	63.7	78.7	31.2	70.2	87.0	87.2	73.5	10.2
May-Jul 2018	63.7	78.8	32.2	69.2	86.6	87.4	73.9	10.8
Aug-Oct 2018	63.8	79.0	29.9	70.2	86.8	87.6	74.1	10.7
Nov-Jan 2019	64.1	79.3	29.4	71.1	87.1	87.7	74.4	11.0
Feb-Apr 2019	64.0	79.2	30.5	69.8	87.3	87.6	74.6	11.1
<b>May-Jul 2019</b>	<b>63.9</b>	<b>79.2</b>	<b>31.2</b>	<b>69.5</b>	<b>87.3</b>	<b>87.5</b>	<b>74.7</b>	<b>11.1</b>
Change on quarter	0.0	0.0	0.7	-0.3	0.0	-0.1	0.2	0.0
Change on year	0.2	0.5	-1.0	0.3	0.7	0.1	0.9	0.3

Men	MGWH	MGSP	YCAH	YCAK	YCAN	YCAQ	MGWQ	MGWT
May-Jul 2017	69.1	83.5	29.7	71.7	93.4	93.0	78.6	13.5
May-Jul 2018	69.0	83.5	31.3	71.5	92.9	93.1	78.6	13.9
Aug-Oct 2018	69.2	83.9	29.4	72.9	93.0	93.3	78.9	14.2
Nov-Jan 2019	69.4	84.0	28.3	73.2	93.2	93.4	79.1	14.5
Feb-Apr 2019	69.1	83.7	28.8	71.1	93.3	93.4	79.1	14.5
<b>May-Jul 2019</b>	<b>68.9</b>	<b>83.6</b>	<b>29.5</b>	<b>70.7</b>	<b>93.1</b>	<b>93.3</b>	<b>79.1</b>	<b>14.0</b>
Change on quarter	-0.2	-0.1	0.7	-0.5	-0.3	0.0	0.0	-0.6
Change on year	-0.1	0.1	-1.7	-0.8	0.2	0.3	0.4	0.1

Women	MGWI	LF23	YCAI	YCAL	YCAO	YCAR	LF2D	LFL3
May-Jul 2017	58.6	74.0	32.8	68.6	80.5	81.6	68.5	7.4
May-Jul 2018	58.6	74.0	33.2	66.8	80.2	81.9	69.3	8.2
Aug-Oct 2018	58.6	74.2	30.4	67.2	80.6	82.0	69.5	7.7
Nov-Jan 2019	59.0	74.7	30.5	68.9	81.0	82.1	70.0	8.0
Feb-Apr 2019	59.0	74.8	32.4	68.4	81.2	82.1	70.2	8.1
<b>May-Jul 2019</b>	<b>59.2</b>	<b>74.8</b>	<b>33.0</b>	<b>68.3</b>	<b>81.4</b>	<b>81.8</b>	<b>70.5</b>	<b>8.6</b>
Change on quarter	0.1	0.1	0.6	-0.1	0.2	-0.2	0.3	0.5
Change on year	0.6	0.8	-0.1	1.5	1.2	-0.1	1.3	0.5

Relationship between columns: 1= 2+8; 2=3+4+5+6+7.

<sup>1</sup>Denominator = all persons in the relevant age group.

Data source: Labour Force Survey

Labour market statistics enquiries: labour.market@ons.gov.uk

# ECONOMIC ACTIVITY AND INACTIVITY

## 11 Economic inactivity: reasons

United Kingdom (thousands) seasonally adjusted

		Total aged 16-64	Economic inactivity by reason (aged 16 to 64)						Wanting/not wanting a job (aged 16 to 64)		
			Student	Looking after family / home	Temp sick	Long-term sick	Discouraged workers	Retired	Other	Does not want job	Wants a job <sup>1</sup>
		1	2	3	4	5	6	7	8	9	10
		LF2M	LF63	LF65	LF67	LF69	LFL8	LF6B	LF6D	LFL9	LFM2
People	May-Jul 2017	8,749	2,330	2,091	166	2,007	32	1,195	927	6,738	2,011
	May-Jul 2018	8,758	2,325	2,044	174	2,049	31	1,132	1,004	6,818	1,939
	Aug-Oct 2018	8,666	2,316	2,031	170	1,983	34	1,139	994	6,793	1,873
	Nov-Jan 2019	8,549	2,257	2,005	173	2,006	33	1,089	985	6,733	1,816
	Feb-Apr 2019	8,581	2,260	2,047	175	1,971	32	1,112	985	6,757	1,823
	May-Jul 2019	8,587	2,241	1,999	164	2,048	40	1,101	995	6,712	1,875
	Change on quarter	6	-19	-49	-11	77	8	-12	11	-46	52
	Change %	0.1	-0.8	-2.4	-6.3	3.9	25.3	-1.0	1.1	-0.7	2.8
	Change on year	-171	-84	-45	-10	-1	9	-31	-8	-106	-64
	Change %	-1.9	-3.6	-2.2	-5.8	-0.1	28.3	-2.7	-0.8	-1.6	-3.3
Men	YBSO	BEEH	BEAQ	BEDI	BEDL	YCFP	BEDR	BEDU	YBWA	YBWD	
	May-Jul 2017	3,369	1,171	234	77	981	16	479	412	2,569	800
	May-Jul 2018	3,375	1,135	224	80	1,023	18	461	434	2,573	802
	Aug-Oct 2018	3,314	1,152	221	79	953	24	467	417	2,556	759
	Nov-Jan 2019	3,290	1,141	215	87	951	21	477	398	2,547	743
	Feb-Apr 2019	3,341	1,156	234	93	930	23	497	409	2,607	734
	May-Jul 2019	3,364	1,135	226	72	964	24	506	437	2,591	772
	Change on quarter	23	-21	-8	-20	34	1	8	28	-15	38
	Change %	0.7	-1.8	-3.2	-22.1	3.6	4.6	1.7	6.9	-0.6	5.2
	Change on year	-11	-1	2	-8	-58	5	45	3	19	-30
Change %	-0.3	-0.1	1.0	-9.7	-5.7	28.4	9.8	0.7	0.7	-3.7	
Women	LF2N	LF64	LF66	LF68	LF6A	LFM3	LF6C	LF6E	LFM4	LFM5	
	May-Jul 2017	5,379	1,159	1,857	90	1,026	16	716	515	4,169	1,211
	May-Jul 2018	5,383	1,189	1,820	94	1,027	13	671	570	4,245	1,137
	Aug-Oct 2018	5,351	1,163	1,810	91	1,029	10	672	576	4,237	1,114
	Nov-Jan 2019	5,259	1,116	1,790	86	1,054	12	613	587	4,186	1,073
	Feb-Apr 2019	5,240	1,104	1,813	82	1,040	9	615	576	4,151	1,089
	May-Jul 2019	5,223	1,106	1,773	91	1,084	16	595	558	4,120	1,103
	Change on quarter	-17	2	-41	9	43	7	-20	-17	-30	14
	Change %	-0.3	0.2	-2.3	11.6	4.2	75.6	-3.3	-3.0	-0.7	1.2
	Change on year	-159	-83	-48	-2	57	4	-76	-11	-125	-34
Change %	-3.0	-7.0	-2.6	-2.5	5.6	28.3	-11.3	-2.0	-2.9	-3.0	
Percentage of economically inactive aged from 16 to 64 (%)											
People	LF6V	LF6X	LF6Z	LF73	LF75	LF77	LF79	LF7B	LF7D	LF7F	
	May-Jul 2017	100	26.6	23.9	1.9	22.9	0.4	13.7	10.6	77.0	23.0
	May-Jul 2018	100	26.5	23.3	2.0	23.4	0.4	12.9	11.5	77.9	22.1
	Aug-Oct 2018	100	26.7	23.4	2.0	22.9	0.4	13.1	11.5	78.4	21.6
	Nov-Jan 2019	100	26.4	23.5	2.0	23.5	0.4	12.7	11.5	78.8	21.2
	Feb-Apr 2019	100	26.3	23.9	2.0	23.0	0.4	13.0	11.5	78.8	21.2
	May-Jul 2019	100	26.1	23.3	1.9	23.8	0.5	12.8	11.6	78.2	21.8
Men	BEBP	BEEH	BEEK	BEEN	BEEQ	BEET	BEEW	BEEZ	BEAS	BEGT	
	May-Jul 2017	100	34.7	7.0	2.3	29.1	0.5	14.2	12.2	76.2	23.8
	May-Jul 2018	100	33.6	6.6	2.4	30.3	0.5	13.6	12.9	76.2	23.8
	Aug-Oct 2018	100	34.8	6.7	2.4	28.8	0.7	14.1	12.6	77.1	22.9
	Nov-Jan 2019	100	34.7	6.5	2.7	28.9	0.6	14.5	12.1	77.4	22.6
	Feb-Apr 2019	100	34.6	7.0	2.8	27.9	0.7	14.9	12.2	78.0	22.0
	May-Jul 2019	100	33.7	6.7	2.1	28.7	0.7	15.0	13.0	77.0	23.0
Women	LF6W	LF6Y	LF72	LF74	LF76	LF78	LF7A	LF7C	LF7E	LF7G	
	May-Jul 2017	100	21.5	34.5	1.7	19.1	0.3	13.3	9.6	77.5	22.5
	May-Jul 2018	100	22.1	33.8	1.7	19.1	0.2	12.5	10.6	78.9	21.1
	Aug-Oct 2018	100	21.7	33.8	1.7	19.2	0.2	12.6	10.8	79.2	20.8
	Nov-Jan 2019	100	21.2	34.0	1.6	20.1	0.2	11.7	11.2	79.6	20.4
	Feb-Apr 2019	100	21.1	34.6	1.6	19.9	0.2	11.7	11.0	79.2	20.8
	May-Jul 2019	100	21.2	33.9	1.7	20.7	0.3	11.4	10.7	78.9	21.1

Relationship between columns : 1=2+3+4+5+6+7+8; 1=9+10.

Data Source: Labour Force Survey.

Labour market statistics enquiries: labour.market@ons.gov.uk

1. This series comprises those who say they would like a regular paid job, but who do not meet the internationally agreed definition of unemployment because they have not been looking for work in the last four weeks and/or they were unable to start working within two weeks.

# ECONOMIC ACTIVITY AND INACTIVITY

## 12 Educational status, economic activity and inactivity of people aged from 16 to 24

May - July 2019

United Kingdom (thousands) seasonally adjusted

	All aged 16 to 24				In full-time education (FTE)				Not in full-time education (FTE) <sup>1</sup>			
	Total	Employed	Unemployed	Economically inactive	Total	Employed <sup>2</sup>	Unemployed <sup>2</sup>	Economically inactive	Total	Employed	Unemployed	Economically inactive
	1	2	3	4	5	6	7	8	9	10	11	12

### Levels

#### People

16-17	1,392	351	84	957	1,201	263	61	876	191	87	23	81
18-24	5,515	3,430	404	1,681	1,841	638	82	1,120	3,675	2,792	322	561
16-24	6,907	3,781	488	2,638	3,041	902	143	1,997	3,865	2,879	344	642

#### Men

16-17	713	164	46	502	599	110	31	458	114	54	16	44
18-24	2,817	1,745	246	826	884	266	37	581	1,933	1,479	209	245
16-24	3,529	1,909	292	1,328	1,482	375	68	1,039	2,047	1,533	224	290

#### Women

16-17	679	187	37	454	602	154	30	418	76	33	7	36
18-24	2,699	1,685	158	855	957	372	45	539	1,742	1,313	113	316
16-24	3,377	1,872	195	1,310	1,559	526	75	958	1,818	1,346	120	352

### Changes on quarter

#### People

16-17	0	12	-3	-10	-16	7	-4	-18	15	5	2	8
18-24	-21	-40	10	10	15	26	5	-17	-36	-67	5	26
16-24	-22	-28	7	0	-1	33	1	-35	-20	-61	7	34

#### Men

16-17	0	4	1	-5	-11	-3	-3	-4	11	7	4	-1
18-24	-11	-19	-2	10	-23	1	-11	-13	12	-20	9	23
16-24	-11	-15	-1	5	-34	-2	-15	-17	23	-12	13	22

#### Women

16-17	0	8	-4	-5	-5	10	-1	-14	5	-2	-2	9
18-24	-10	-22	12	-1	38	25	16	-4	-48	-47	-4	3
16-24	-11	-14	9	-5	33	35	15	-18	-43	-49	-7	12

### Rates(%)<sup>3</sup>

#### People

16-17	25.2	19.3	68.8	21.9	18.8	73.0	45.8	20.6	42.3
18-24	62.2	10.5	30.5	34.7	11.4	60.9	76.0	10.3	15.3
16-24	54.7	11.4	38.2	29.6	13.7	65.6	74.5	10.7	16.6

#### Men

16-17	23.0	22.0	70.5	18.3	21.9	76.5	47.5	22.3	38.8
18-24	61.9	12.3	29.3	30.1	12.3	65.7	76.5	12.4	12.7
16-24	54.1	13.3	37.6	25.3	15.3	70.1	74.9	12.8	14.1

#### Women

16-17	27.5	16.7	67.0	25.5	16.5	69.4	43.3	17.6	47.4
18-24	62.4	8.6	31.7	38.9	10.8	56.4	75.4	7.9	18.1
16-24	55.4	9.5	38.8	33.7	12.5	61.4	74.0	8.2	19.4

### Changes on quarter

#### People

16-17	0.9	-1.0	-0.7	0.8	-1.5	-0.5	-1.0	0.4	0.9
18-24	-0.5	0.3	0.3	1.1	0.2	-1.4	-1.1	0.3	0.9
16-24	-0.2	0.2	0.1	1.1	-0.4	-1.1	-1.2	0.4	1.0

#### Men

16-17	0.6	-0.1	-0.7	-0.2	-1.2	0.6	2.3	2.7	-4.9
18-24	-0.4	0.0	0.5	0.9	-3.2	0.3	-1.5	0.6	1.1
16-24	-0.2	0.0	0.3	0.4	-2.6	0.4	-1.5	0.7	0.9

#### Women

16-17	1.2	-1.9	-0.6	1.8	-1.5	-1.7	-5.8	-3.4	9.6
18-24	-0.6	0.7	0.1	1.1	3.2	-2.7	-0.6	0.0	0.7
16-24	-0.2	0.4	0.0	1.6	1.6	-2.5	-0.9	-0.1	1.1

Relationship between columns: 1=5+9; 2=6+10; 3=7+11.

Source: Labour Force Survey

Labour market statistics enquiries: labour.market@ons.gov.uk

1. Not in full-time education includes people in part-time education and/or some form of training. Estimates of the number of young people who were not in employment, education or training ("NEET") cannot therefore be derived from this table. Estimates of young people who were NEET are published separately at:

<https://www.ons.gov.uk/employmentandlabourmarket/peopleinwork/unemployment/bulletins/youngpeoplenotinfulltimeeducationemploymentortrainingneet/latest>

2. People in full-time education are employed if they have a part-time job or unemployed if they are looking for part-time employment.

3. Denominator = all persons in the relevant age group for economically active, total in employment and economically inactive; economically active for unemployment.

# 17 International comparisons of employment and unemployment

Employment rates as published by EUROSTAT: (not seasonally adjusted)					Unemployment rates as published by EUROSTAT on 30 August 2019 (seasonally adjusted)					
		Latest period	Employment rate (%) <sup>1,2</sup>	Change on year %			Latest Period	Unemployment rate (%) <sup>3</sup>	Change on month %	Change on year %
European Union (EU)					European Union (EU)					
Austria	YXSN	Jan-Mar 19	72.7	0.7	Austria	ZXDS	Jul 19	4.4	-0.1	-0.5
Belgium	YXSO	Jan-Mar 19	64.5	0.6	Belgium	ZXDI	Jul 19	5.7	0.1	-0.2
Bulgaria	A495	Jan-Mar 19	68.3	1.8	Bulgaria	A492	Jul 19	4.5	0.0	-0.8
Croatia	GUMI	Jan-Mar 19	61.2	2.2	Croatia	GUMJ	Jul 19	7.1	0.0	-1.3
Cyprus	A4AC	Jan-Mar 19	69.1	2.9	Cyprus	A4AN	Jul 19	7.0	-0.2	-1.3
Czech Republic	A4AD	Jan-Mar 19	75.0	0.8	Czech Republic	A4AO	Jul 19	2.1	0.2	-0.2
Denmark	YXSP	Jan-Mar 19	74.9	0.5	Denmark	ZXDJ	Jul 19	4.6	0.0	-0.4
Estonia	A4AE	Jan-Mar 19	74.1	0.5	Estonia	A4AP	Jun 19	4.6	-0.4	-0.3
Finland	YXSQ	Jan-Mar 19	71.4	1.3	Finland	ZXDU	Jul 19	6.7	0.1	-0.7
France	YXSR	Apr-Jun 19	65.7	0.2	France	ZXDN	Jul 19	8.5	0.0	-0.5
Germany	YXSS	Jan-Mar 19	76.3	0.9	Germany	ZXDK	Jul 19	3.0	-0.1	-0.4
Greece	YXST	Jan-Mar 19	55.0	1.7	Greece	ZXDL	May 19	17.2	-0.2	-2.2
Hungary	A4AF	Jan-Mar 19	69.9	1.2	Hungary	A4AQ	Jun 19	3.5	0.1	-0.2
Ireland	YXSU	Jan-Mar 19	69.3	1.4	Ireland	ZXDO	Jul 19	5.3	0.0	-0.5
Italy	YXSV	Jan-Mar 19	58.2	0.6	Italy	ZXDP	Jul 19	9.9	0.1	-0.5
Latvia	A4AG	Jan-Mar 19	71.4	0.5	Latvia	A4AR	Jul 19	6.5	0.0	-0.8
Lithuania	A4AH	Jan-Mar 19	72.5	1.9	Lithuania	A4AS	Jul 19	6.4	0.2	0.3
Luxembourg	YXSW	Jan-Mar 19	67.6	0.4	Luxembourg	ZXDQ	Jul 19	5.7	0.0	0.1
Malta	A4AI	Jan-Mar 19	72.2	2.5	Malta	A4AT	Jul 19	3.4	0.0	-0.4
Netherlands	YXSX	Apr-Jun 19	78.1	1.1	Netherlands	ZXDR	Jul 19	3.4	0.0	-0.4
Poland	A4AJ	Jan-Mar 19	67.2	0.6	Poland	A4AU	Jul 19	3.3	0.0	-0.6
Portugal	YXSY	Apr-Jun 19	70.4	0.6	Portugal	ZXDT	Jul 19	6.5	-0.1	-0.3
Romania	A494	Jan-Mar 19	64.2	1.1	Romania	A48Z	Jul 19	3.9	0.1	-0.3
Slovak Republic	A4AK	Jan-Mar 19	68.6	1.5	Slovak Republic	A4AV	Jul 19	5.3	-0.1	-1.2
Slovenia	A4AL	Jan-Mar 19	71.3	1.6	Slovenia	A4AW	Jul 19	4.5	0.0	-0.8
Spain	YXSZ	Apr-Jun 19	63.5	1.0	Spain	ZXDM	Jul 19	13.9	-0.1	-1.1
Sweden	YXTA	Apr-Jun 19	77.6	-0.2	Sweden <sup>5</sup>	ZXDV	Jul 19	7.1	0.4	0.6
United Kingdom (*)	ANZ6	Jan-Mar 19	75.0	0.4	United Kingdom (*)	ZXDW	May 19	3.8	0.1	-0.1
Total EU <sup>4</sup>	A496	Jan-Mar 19	68.6	0.8	Total EU <sup>4</sup>	A493	Jul 19	6.3	0.0	-0.5
Eurozone <sup>4</sup>	YXTC	Jan-Mar 19	67.3	0.8	Eurozone <sup>4</sup>	ZXDH	Jul 19	7.5	0.0	-0.6
Employment rates published by the OECD (seasonally adjusted)					Unemployment rates as published by national statistical offices (seasonally adjusted)					
Canada	A48O	Apr-Jun 19	74.5	0.8	Canada	ZXDZ	Aug 19	5.7	0.0	-0.3
Japan	A48P	Apr-Jun 19	77.6	0.8	Japan	ZXDY	Jul 19	2.2	-0.1	-0.3
United States	A48Q	Apr-Jun 19	71.1	0.5	United States	ZXDX	Aug 19	3.7	0.0	-0.1

Sources: EUROSTAT, OECD, national statistical offices.  
Labour market statistics enquiries: labour.market@ons.gov.uk

(\*) Note: The UK rates shown in this table are as published by EUROSTAT (the EUs statistical office). See Table 1 for the latest rates for the UK as published by ONS.

- All employment rates shown in this table are for those aged from 15 to 64 except for the rate for the United States published by OECD which are for those aged from 16 to 64.
- The employment rates for the EU are published by EUROSTAT and are not seasonally adjusted. EUROSTAT do not publish seasonally adjusted (SA) employment rates but SA rates for some EU countries are published by OECD. These OECD employment rates are available on our website at [dataset A10](#).
- Unemployment rates published by EUROSTAT for most EU countries (but not for the UK), are calculated by extrapolating from the most recent LFS data using monthly registered unemployment data. A standard population basis (15-74) is used by EUROSTAT except for Spain, Italy and the UK (16-74). The unemployment rate for the US is based on those aged 16 and over, but the rates for Canada and Japan are for those aged 15 and over. All unemployment rates shown in this table are seasonally adjusted.
- The "Total EU" series consist of all 28 EU countries. The Eurozone figures consist of the following EU countries: Austria, Belgium, Cyprus, Estonia, Finland, France, Germany, Greece, Ireland, Italy, Latvia, Lithuania, Luxembourg, Malta, Netherlands, Portugal, Slovak Republic, Slovenia and Spain.
- The EU unemployment rates are as published on the EUROSTAT database. For Sweden the rates on the database differ from those shown in the EUROSTAT News Release published on 30 August 2019. This is because the figures for Sweden on the database are seasonally adjusted estimates but the figures for Sweden shown in the News Release are the trend component.

## 18 Labour disputes

United Kingdom, not seasonally adjusted

	Working days lost (thousands) <sup>1,2</sup>		Working days lost in the Public Sector (thousands) <sup>1,2</sup>		Working days lost in the Private Sector (thousands) <sup>1,2</sup>		Number of stoppages <sup>3</sup>		Number of stoppages in the Public Sector		Number of stoppages in the Private Sector		Workers involved (thousands) <sup>1,3</sup>	
	1	2	3	4	5	6	7	8	9	10	11	12	13	14
	BBFW	F8XZ	F8Y2	BLUU	F8Y3	F8Y4	BLUT							
2017 July	50	1	49	12	3	9	3							
2018 July	4	1	3	11	5	6	2							
August	4	0	4	11	2	9	2							
September	9	2	7	11	4	7	2							
October	16	9	7	16	5	11	9							
November	11	0	11	8	1	7	3							
December	5	1	5	7	2	5	1							
2019 January	11	1	11	10	2	8	6							
February	7	2	5	11	5	6	6							
March	9	1	8	14	6	8	5							
April	2	1	2	8	1	7	1							
May	10	1	10	14	2	12	5							
June	12	1	12	24	5	19	3							
July (p)	12	4	8	24	9	15	7							
12 months to:														
Jul 18	325	21	304	76	25	51	38							
Jul 19 (p)	109	22	87	102	30	72	28							

Relationship between columns 1=2+3; 4=5+6

Data source: ONS Labour Disputes Survey  
Labour disputes enquiries 01633 455400

- Estimates of working days lost and workers involved are shown to the nearest thousand. Unrounded estimates of less than 500 therefore round to zero.
- Due to rounding the working days lost for the public and private sectors may not add up to the total working days lost.
- The latest 12 month cumulative totals for the figures in these columns will not necessarily equal the sum of the 12 months as some disputes continue for over one month. These disputes appear in each month's data, but only once in the total.

# REDUNDANCIES

## 22 Redundancies: level and rates <sup>1</sup>

United Kingdom (seasonally adjusted)

	People (aged 16 and over)		Men (aged 16 and over)		Women (aged 16 and over)	
	Level (000s)	Rate <sup>1</sup>	Level (000s)	Rate <sup>1</sup>	Level (000s)	Rate <sup>1</sup>
	BEAO	BEIR	BEIU	BEIX	BEJA	BEJD
May-Jul 2017	110	4.1	67	4.9	43	3.2
May-Jul 2018	87	3.2	43	3.1	44	3.3
Aug-Oct 2018	83	3.0	46	3.3	37	2.7
Nov-Jan 2019	91	3.3	53	3.8	38	2.8
Feb-Apr 2019	108	3.9	64	4.6	44	3.2
<b>May-Jul 2019</b>	<b>98</b>	<b>3.5</b>	<b>51</b>	<b>3.7</b>	<b>47</b>	<b>3.4</b>
change on quarter	-10	-0.4	-12	-0.9	2	0.2
change %	-9.4		-19.5		5.1	
change on year	11	0.4	8	0.6	2	0.1
change %	12.5		19.5		5.6	

Data source: Labour Force Survey

Labour market statistics enquiries: [labour.market@ons.gov.uk](mailto:labour.market@ons.gov.uk)

1. The redundancy rate is the ratio of the redundancy level for the given quarter to the seasonally adjusted number of employees in the previous quarter, multiplied by 1,000.