

Statistical bulletin

Labour market overview, UK: April 2020

Estimates of employment, unemployment, economic inactivity and other employment-related statistics for the UK.



Contact:
Debra Leaker
labour.market@ons.gov.uk
+44 (0)1633 455400

Release date:
21 April 2020

Next release:
19 May 2020

Notice

21 April 2020

The effect of the coronavirus (COVID-19) pandemic on our capacity means we have reviewed the existing labour market releases and will be suspending some publications.

This will protect the delivery and quality of our remaining labour market outputs as well as ensuring we can respond to new demands as a direct result of COVID-19. More details about the impact on labour market outputs can be found in our [statement](#).

13 May 2020

A formatting error caused the unemployment rate to display incorrectly in Table 1 of this release. This has now been corrected. The rate is displayed correctly elsewhere in the bulletin and in the related datasets. We apologise for any inconvenience caused.

Table of contents

1. [Other pages in this release](#)
2. [Main points](#)
3. [Employment](#)
4. [Unemployment](#)
5. [Economic inactivity](#)
6. [Earnings growth](#)
7. [Vacancies](#)
8. [Labour market data](#)
9. [Glossary](#)
10. [Measuring the data](#)
11. [Strengths and limitations](#)
12. [Related links](#)

1 . Other pages in this release

Other commentary from the latest labour market data can be found on the following pages:

- [Employment in the UK](#)
- [Average weekly earnings in Great Britain](#)
- [Vacancies and jobs](#)

2 . Main points

- The estimates presented in this bulletin cover the period prior to the implementation of the coronavirus (COVID-19) social distancing measures.
- The UK employment rate in the three months to February 2020 was estimated at a record high of 76.6%, 0.4 percentage points higher than a year earlier and 0.2 percentage points up on the previous quarter.
- The UK unemployment rate for the three months to February 2020 was estimated at 4.0%, largely unchanged compared with a year earlier and 0.1 percentage point higher than the previous quarter.
- In real terms (after adjusting for [inflation](#)), annual growth is estimated to be 1.2% in total pay and 1.3% in regular pay in the three months to February 2020, both down from a recent peak of 2.0% in the three months to June 2019.
- There were an estimated 795,000 vacancies in the UK in January to March 2020; this is 52,000 fewer than a year earlier and 6,000 fewer than the previous quarter.
- [Earnings and employment from Pay As You Earn \(PAYE\) Real Time Information \(RTI\), UK: April 2020](#) is also released today; this is an experimental monthly estimate of paid employees and their pay from PAYE RTI and includes a flash estimate of paid employees for March 2020.

The data in this bulletin come from surveys of households and businesses. It is not possible to survey every household and business each month, so these statistics are estimates based on samples.

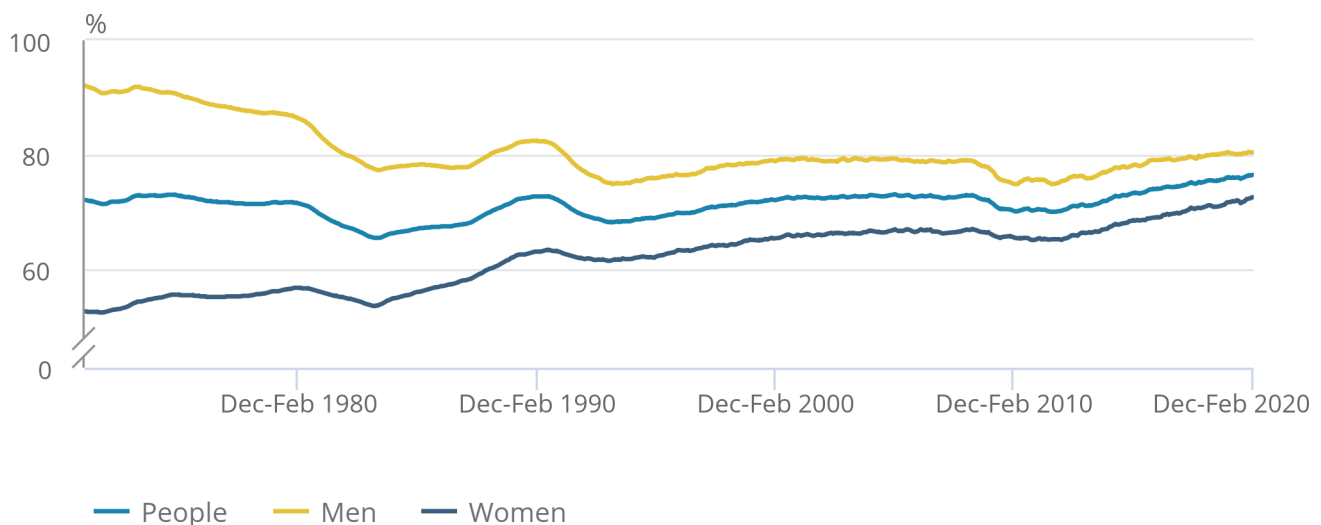
3 . Employment

Figure 1: The employment rate for all people increased by 0.4 percentage points on the year to a record high of 76.6%

UK employment rates (aged 16 to 64 years), seasonally adjusted, between January to March 1971 and December 2019 to February 2020

Figure 1: The employment rate for all people increased by 0.4 percentage points on the year to a record high of 76.6%

UK employment rates (aged 16 to 64 years), seasonally adjusted, between January to March 1971 and December 2019 to February 2020



Source: Office for National Statistics – Labour Force Survey

[Employment](#) measures the number of people aged 16 years and over in paid work. The employment rate is the proportion of people aged between 16 and 64 years who are in paid work.

Estimated employment rates for people aged between 16 and 64 years have generally been increasing since early 2012. Recent increases have largely been driven by increases in the employment rate for women (Figure 1).

For December 2019 to February 2020:

- the estimated employment rate for all people was at a record high of 76.6%; this is 0.4 percentage points up on the year and 0.2 percentage points up on the quarter
- the estimated employment rate for men was 80.5%; this is largely unchanged on the year and 0.1 percentage points up on the quarter
- the estimated employment rate for women was at a record high of 72.7%; this is 0.9 percentage points up on the year and 0.3 percentage points up on the quarter

The increase in the employment rate for women in recent years is partly a result of changes to the State Pension age for women, resulting in fewer women retiring between the ages of 60 and 65 years. However, since the equalisation of the State Pension age, the employment rate for women has continued to rise.

Estimates for December 2019 to February 2020 show a record 33.07 million people aged 16 years and over in employment, 352,000 more than a year earlier. This annual increase was mainly driven by women in employment (up by 318,000 on the year to a record high of 15.73 million), workers aged above 50 years (up by 258,000 to a record high of 10.70 million) and aged 25 to 34 years (up by 96,000 to a record high of 7.64 million), self-employed workers (up by 195,000 to 5.03 million), and full-time employees (up by 184,000 to a record high of 20.87 million). The annual increase for self-employed women (up by 140,000 to a joint record of 1.72 million) was the largest since May to July 2014.

There was a 172,000 increase in employment on the quarter. This was, again, mainly driven by women in employment (up 143,000), workers aged 18 to 24 years (up 66,000 to 3.49 million) and aged above 65 years (up 62,000 to a record high of 1.39 million), and full-time employees (up 107,000). More information about employment can be found in the [Employment in the UK bulletin](#), published alongside this release.

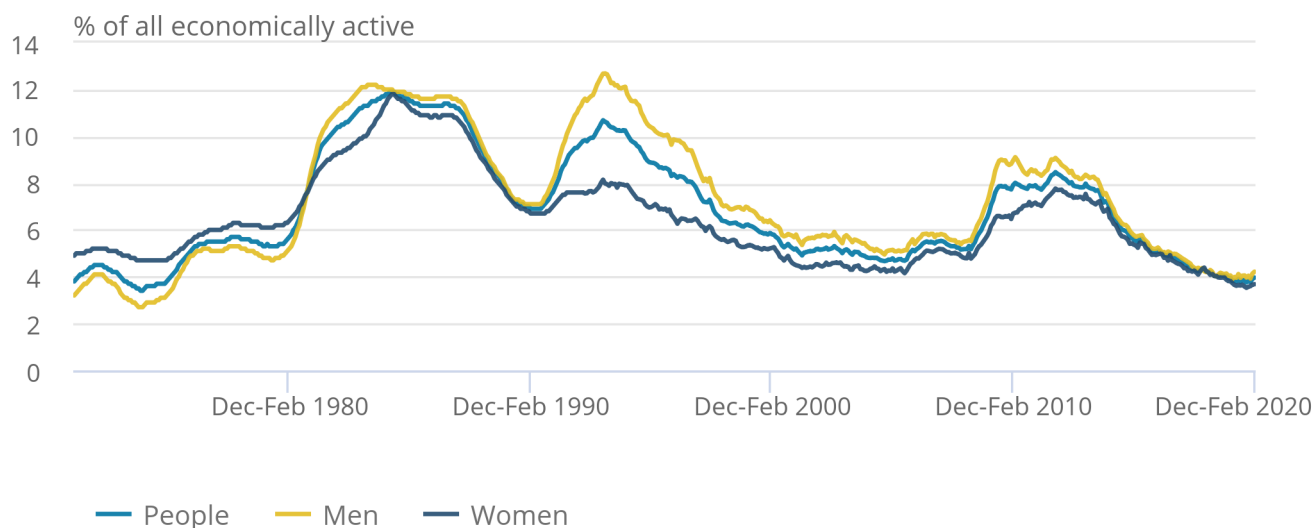
4 . Unemployment

Figure 2: The unemployment rate for all people was largely unchanged on the year, at 4.0%

UK unemployment rates (aged 16 years and over), seasonally adjusted, between January to March 1971 and December 2019 to February 2020

Figure 2: The unemployment rate for all people was largely unchanged on the year, at 4.0%

UK unemployment rates (aged 16 years and over), seasonally adjusted, between January to March 1971 and December 2019 to February 2020



Source: Office for National Statistics – Labour Force Survey

[Unemployment](#) measures people without a job who have been actively seeking work within the last four weeks and are available to start work within the next two weeks. The unemployment rate is not the proportion of the total population who are unemployed. It is the proportion of the economically active population (those in work plus those seeking and available to work) who are unemployed.

Estimated unemployment rates for both men and women aged 16 years and over have generally been falling since late 2013 but have levelled off in recent periods (Figure 5).

For December 2019 to February 2020:

- the estimated UK unemployment rate for all people was 4.0%; this is largely unchanged compared with a year earlier and 0.1 percentage point higher than the previous quarter
- the estimated UK unemployment rate for men was 4.2%; this is 0.2 percentage points higher than a year earlier and 0.2 percentage points higher than the previous quarter
- the estimated UK unemployment rate for women was 3.7%; this is down by 0.1 percentage point on the year but up by 0.1 percentage point on the quarter

For December 2019 to February 2020, an estimated 1.36 million people were unemployed. This is 22,000 more than a year earlier but 476,000 fewer than five years earlier. The small increase on the year is the second annual increase in unemployment since May to July 2012, and it was driven by a 32,000 increase for men.

More information about unemployment can be found in the [Employment in the UK bulletin](#), published alongside this release.

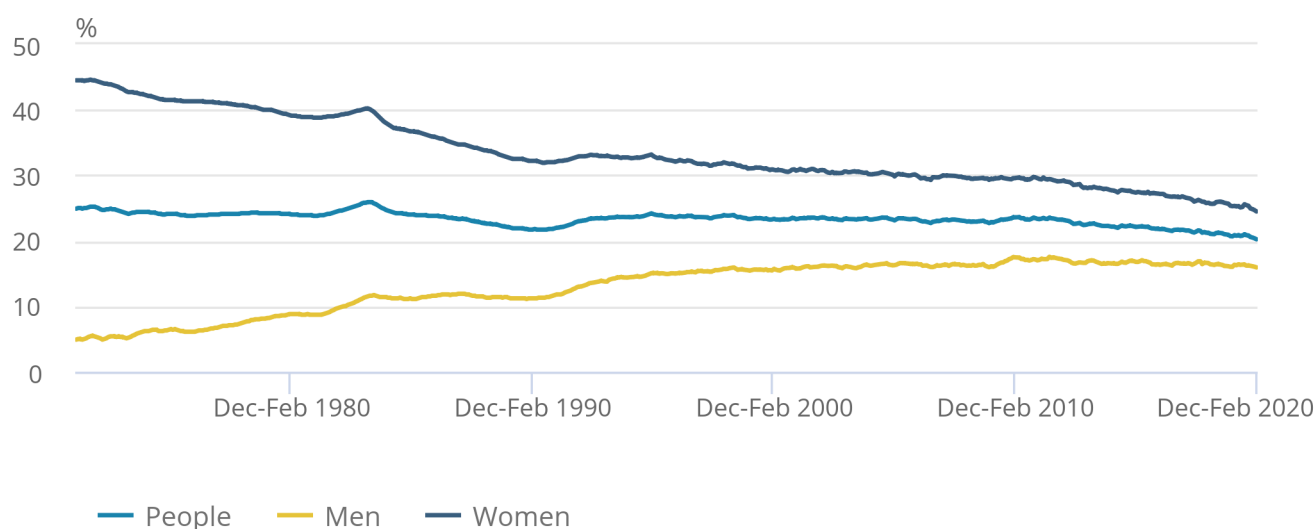
5 . Economic inactivity

Figure 3: The overall inactivity rate for people aged between 16 and 64 years was a record low of 20.2%, down 0.4 percentage points on the year

UK economic inactivity rate (all people aged 16 to 64 years), seasonally adjusted, between January to March 1971 and December 2019 to February 2020

Figure 3: The overall inactivity rate for people aged between 16 and 64 years was a record low of 20.2%, down 0.4 percentage points on the year

UK economic inactivity rate (all people aged 16 to 64 years), seasonally adjusted, between January to March 1971 and December 2019 to February 2020



Source: Office for National Statistics – Labour Force Survey

[Economic inactivity](#) measures people without a job but who are not classed as unemployed because they have not been actively seeking work within the last four weeks and/or they are unable to start work within the next two weeks. Our headline measure of economic inactivity is for those aged between 16 and 64 years.

Since comparable records began in 1971, the economic inactivity rate for all people aged between 16 and 64 years has generally been falling (although it increased during recessions). This is because of a gradual fall in the economic inactivity rate for women (as seen in Figure 8). Over recent years, the economic inactivity rate for men has been relatively flat.

For people aged between 16 and 64 years, for December 2019 to February 2020:

- the estimated economic inactivity rate for all people was a record low of 20.2%; this is down by 0.4 percentage points on the year and down by 0.3 percentage points on the quarter
- the estimated economic inactivity rate for men was 15.9%; this is down by 0.1 percentage point on the year and down by 0.2 percentage points on the quarter
- the estimated economic inactivity rate for women was a record low of 24.5%; this is down by 0.8 percentage points on the year and by 0.4 percentage points down on the quarter

Estimates for December 2019 to February 2020 show 8.37 million people aged between 16 and 64 years not in the labour force (economically inactive). This was 166,000 fewer than a year earlier and 641,000 fewer than five years earlier. The annual decrease was mainly driven by women, with the level down by 157,000 to reach a record low of 5.09 million.

More information about economic inactivity can be found in the [Employment in the UK bulletin](#), published alongside this release.

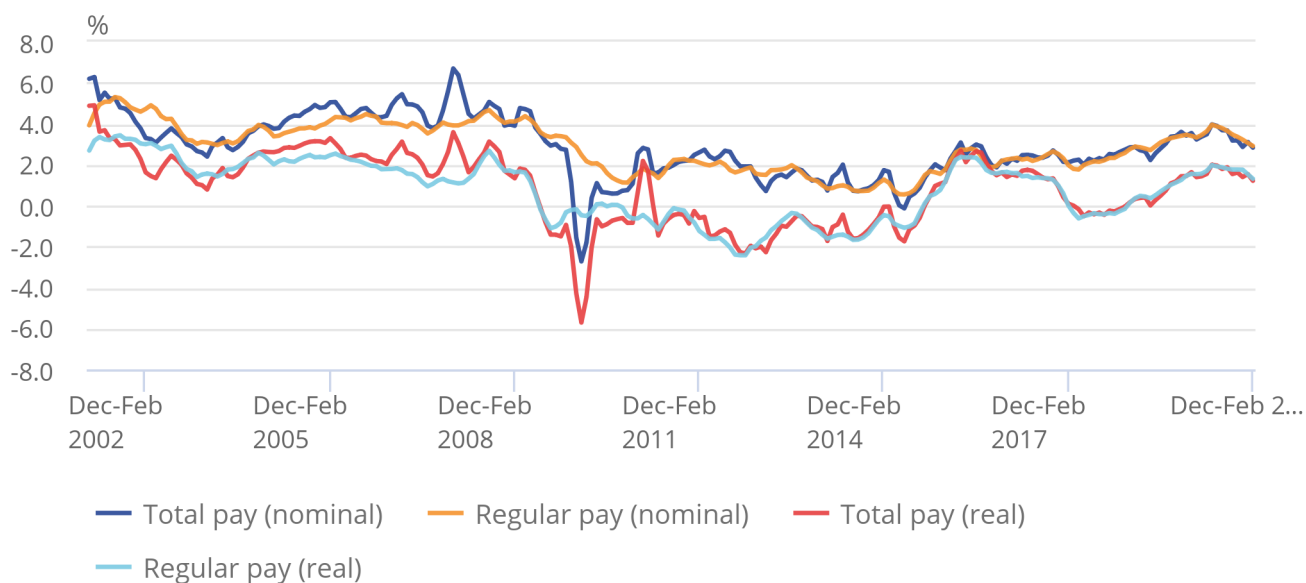
6 . Earnings growth

Figure 4: Pay growth for employees in total pay (including bonuses) is estimated to be 2.8%; this translates to 1.2% in real terms

Great Britain average weekly earnings annual growth rates, seasonally adjusted, January to March 2001 to December 2019 to February 2020

Figure 4: Pay growth for employees in total pay (including bonuses) is estimated to be 2.8%; this translates to 1.2% in real terms

Great Britain average weekly earnings annual growth rates, seasonally adjusted, January to March 2001 to December 2019 to February 2020



Source: Office for National Statistics – Monthly Wages and Salaries Survey

The earnings estimates are not just a measure of pay rises as they also reflect changes in the number of paid hours worked and changes in the structure of the workforce, for example, more high-paid jobs would have an upward effect on earnings growth rates.

The rate of pay growth trended upwards from spring 2017. In April to June 2019, it reached 4.0% for total pay and 3.9% for regular pay, the highest nominal pay growth rates since 2008. However, since then growth has slowed. In December 2019 to February 2020, it stood at 2.8% for total pay and 2.9% for regular pay.

In real terms, annual pay growth has been positive since the three months to February 2018. This means that during that period, pay has been growing faster than inflation. Growth in real terms for both total pay and regular pay reached a recent peak of 2.0% in the three months to June 2019, before decreasing to 1.2% for total pay and 1.3% for regular pay in the three months to February 2020.

More information about earnings growth can be found in the [Average weekly earnings in Great Britain](#) bulletin, published alongside this release.

7 . Vacancies

Figure 5: January to March 2020 saw the tenth consecutive annual decrease in job vacancies

Number of vacancies in the UK, seasonally adjusted, between January to March 2002 and January to March 2020

Figure 5: January to March 2020 saw the tenth consecutive annual decrease in job vacancies

Number of vacancies in the UK, seasonally adjusted, between January to March 2002 and January to March 2020



Source: Office for National Statistics – Vacancy Survey

The estimated [number of vacancies](#) in the UK fell sharply during the recession of 2008 to 2009. Since 2012, it has generally increased, reaching a record high of 855,000 in November 2018 to January 2019. For January to March 2020, there were an estimated 795,000 vacancies in the UK; this is 6,000 fewer than in the previous quarter (October to December 2019), which is not a [statistically significant](#) change, and 52,000 fewer than a year earlier.

More information about vacancies can be found in the [Vacancies and jobs in the UK bulletin](#), published alongside this release.

8 . Labour market data

[Summary of labour market statistics](#)

Dataset A01 | Released 21 April 2020

Estimates of employment, unemployment and other employment-related statistics for the UK.

[Employment, unemployment and economic inactivity](#)

Dataset A02 SA | Released 21 April 2020

Estimates of UK employment, unemployment and economic inactivity for people aged 16 years and over and people aged between 16 and 64 years based on the Labour Force Survey (LFS).

[Average weekly earnings](#)

Dataset EARN01 | Released 21 April 2020

Estimates of Great Britain earnings growth based on the Monthly Wages and Salaries Survey.

[Vacancies by industry](#)

Dataset VACS02 | Released 21 April 2020

Estimates of the number of UK job vacancies for each industry, based on a survey of businesses.

View all related data on the [related data page](#). Alternatively, [Nomis](#) provides free access to the most detailed and up-to-date UK labour market statistics from official sources.

Table 1: Labour Force Survey sampling variability (95% confidence intervals)
Sampling variability (95% confidence intervals) of UK Labour Force Survey estimates, December 2019 to
February 2020

	Level	Sampling variability of level (*)	Change on quarter	Sampling variability of change on quarter (*)	Change on year	Sampling variability of change on year (*)
Employment (000s, aged 16 and over)	33,073	± 181	172	± 152	352	± 240
Employment rate (aged 16 to 64)	76.6%	± 0.4	0.2	± 0.3	0.4	± 0.5
Average weekly hours	31.8	± 0.2	-0.2	± 0.2	-0.4	± 0.3
Unemployment (000s, aged 16 and over)	1,364	± 71	58	± 76	22	± 98
Unemployment rate (aged 16 and over)	4.0%	± 0.2	0.1	± 0.2	0.0	± 0.3
Economically active (000s, aged 16 and over)	34,437	± 173	230	± 148	374	± 231
Economic activity rate (aged 16 to 64)	79.8%	± 0.4	0.3	± 0.3	0.4	± 0.5
Economically inactive (000s, aged 16 to 64)	8,370	± 155	-136	± 133	-166	± 208
Economic inactivity rate (aged 16 to 64)	20.2%	± 0.4	-0.3	± 0.3	-0.4	± 0.5
Redundancies (000s, aged 16 and over)	107	± 19	-8	± 27	19	± 25

Source: Office for National Statistics – Labour Force Survey

Notes

1. The sampling variability estimates are for 95% confidence intervals and are calculated on data that are not seasonally adjusted. [Back to table](#)
2. These data are part of data table A11: Labour Force Survey sampling variability, which is part of the Labour market overview, UK release. [Back to table](#)

Table 2: Summary of employee earnings, seasonally adjusted, Great Britain, December 2019 to February 2020

	Annual growth rate (estimate)	Sampling variability of growth rate (1)
Total pay (nominal)	2.8	± 0.5
Total pay (real)	1.2	
Regular pay (nominal)	2.9	± 0.5
Regular pay (real)	1.3	

Source: Office for National Statistics – Monthly Wages and Salaries Survey

Notes

1. The sampling variability estimates are for 95% confidence intervals (where we are 95% certain the true value lies within the specified range) and are calculated on not seasonally adjusted data for single month growth rates for the 12 months from January to December 2014. It is not possible to calculate confidence intervals for growth rates in real terms. [Back to table](#)

9 . Glossary

Average weekly earnings

[Average weekly earnings](#) measures money paid by employers to employees in Great Britain before tax and other deductions from pay. The estimates are not just a measure of pay rises as they also reflect, for example, changes in the overall structure of the workforce. More high-paid jobs in the economy would have an upward effect on the earnings growth rate.

Economic inactivity

People not in the labour force (also known as [economically inactive](#)) are not in employment but do not meet the internationally accepted definition of unemployment because they have not been seeking work within the last four weeks and/or they are unable to start work in the next two weeks. The economic inactivity rate is the proportion of people aged between 16 and 64 years who are not in the labour force.

Employment

[Employment](#) measures the number of people in paid work or who had a job that they were temporarily away from (for example, because they were on holiday or off sick). This differs from the number of jobs because some people have more than one job. The employment rate is the proportion of people aged between 16 and 64 years who are in employment. A more detailed explanation is available in our [guide to labour market statistics](#).

Unemployment

[Unemployment](#) measures people without a job who have been actively seeking work within the last four weeks and are available to start work within the next two weeks. The unemployment rate is not the proportion of the total population who are unemployed. It is the proportion of the economically active population (those in work plus those seeking and available to work) who are unemployed.

Vacancies

[Vacancies](#) are defined as positions for which employers are actively seeking recruits from outside their business or organisation. The estimates are based on the Vacancy Survey; this is a survey of businesses designed to provide estimates of the stock of vacancies across the economy, excluding agriculture, forestry and fishing (a small sector for which the collection of estimates would not be practical).

A more detailed [glossary](#) is available.

10 . Measuring the data

Coronavirus (COVID-19)

In response to the developing coronavirus (COVID-19) pandemic, we are working to ensure that we continue to publish economic statistics. For more information, please see [COVID-19 and the production of statistics](#).

We have reviewed all publications and data published as part of the labour market release in response to the COVID-19 pandemic. This has led to the [postponement of some publications and datasets](#) to ensure that we can continue to publish our main labour market data. This will protect the delivery and quality of our remaining outputs as well as ensuring we can respond to new demands as a direct result of COVID-19.

Ahead of the latest labour market statistics release, David Freeman, head of labour market statistics at the Office for National Statistics (ONS), has looked at how the ONS is responding to the pressing need for new information in his blog, [Measuring the labour market during Coronavirus](#).

For more information on how labour market data sources, among others, will be affected by the COVID-19 pandemic, see the [statement](#) published on 27 March 2020.

Data in this statistical bulletin and accompanying datasets relate to periods that are largely unaffected by recent developments (Labour Force Survey (LFS) interviews that took place throughout the three-month reference period of December 2019 to February 2020; Claimant Count statistics relate to the second Thursday of the reference month; Average Weekly Earnings data relate to periods up to and including February 2020; vacancies statistics relate to the first Friday of the reference month, unless this is the first day of the month, in this case the reference date moves to the second Friday of the month; and workforce job estimates relate to reference periods in December 2019).

Our latest data and analysis on the impact of COVID-19 on the UK economy and population is now available on our dedicated [COVID-19 webpage](#). This will be the hub for all special COVID-19-related publications, drawing on all available data.

After EU withdrawal

As the UK leaves the EU, it is important that our statistics continue to be of high quality and are internationally comparable. During the transition period, those UK statistics that align with EU practice and rules will continue to do so in the same way as before 31 January 2020.

After the transition period, we will continue to produce our labour market statistics in line with the UK Statistics Authority's [Code of Practice for Statistics](#) and in accordance with International Labour Organization (ILO) definitions and agreed international statistical guidance.

The employment, unemployment and economic inactivity estimates rely on data collected from the LFS, a survey run by field interviewers with people across the UK every month.

The [LFS performance and quality monitoring reports](#) provide data on response rates and other quality related issues for the LFS, including breakdowns of response by LFS wave, region and question-specific response issues. The average weekly earnings and vacancies estimates rely on data collected from surveys of employers.

More quality and methodology information on strengths, limitations, appropriate uses, and how the data were created is available in the following Quality and Methodology Information (QMI) reports:

- [LFS QMI](#)
- [Average weekly earnings QMI](#)
- [Vacancy Survey QMI](#)

Future publication dates

Because of a public holiday in Northern Ireland, the July 2020 and July 2021 labour market publication dates have both been moved two days later. This change will ensure that users across the UK have the same access to advice from the teams who produce the statistics on the day of release. For further information, please see [Statement on changing the release dates of ONS statistics to avoid public holidays](#).

19 May 2020
16 June 2020
16 July 2020
11 August 2020
15 September 2020
13 October 2020
10 November 2020
15 December 2020
26 January 2021
23 February 2021
23 March 2021
20 April 2021
18 May 2021
15 June 2021
15 July 2021
17 August 2021
14 September 2021
12 October 2021
16 November 2021
14 December 2021

11 . Strengths and limitations

Accuracy of the statistics: estimating and reporting uncertainty

The figures in this bulletin come from surveys, which gather information from a sample rather than from the whole population. The sample is designed to be as accurate as possible given practical limitations such as time and cost constraints. Results from sample surveys are always estimates, not precise figures. This can have an impact on how changes in the estimates should be interpreted, especially for short-term comparisons.

As the number of people available in the sample gets smaller, the variability of the estimates that we can make from that sample size gets larger. Estimates for small groups (for example, unemployed people aged between 16 and 17 years), which are based on small subsets of the Labour Force Survey (LFS) sample, are less reliable and tend to be more volatile than for larger aggregated groups (for example, the total number of unemployed people).

In general, changes in the numbers (and especially the rates) reported in this bulletin between three-month periods are small and are not usually greater than the level that can be explained by sampling variability. Short-term movements in reported rates should be considered alongside longer-term patterns in the series and corresponding movements in other sources to give a fuller picture.

Further information is available in [A guide to labour market statistics](#).

Where to find data about uncertainty and reliability

[Dataset A11](#) shows sampling variabilities for estimates derived from the LFS.

Sampling variability information for average weekly earnings growth rates is available from the “Sampling Variability” worksheets within [datasets EARN01](#) and [EARN03](#).

The sampling variability of the three-month average vacancies level is around plus or minus 1.5% of that level. Information on revisions is available in the [labour market statistics revisions policy](#).

12 . Related links

[Labour market economic commentary](#)

Article | Released 21 April 2020

Additional economic analysis of the latest UK labour market headline statistics and long-term trends.

[Labour market in the regions of the UK](#)

Bulletin | Released 21 April 2020

Regional breakdowns of changes in UK employment, unemployment and economic inactivity.

[UK and non-UK people in the labour market](#)

Article | Updated on 21 April 2020

Estimates of labour market activity by nationality and country of birth.

[Sickness absence in the labour market](#)

Article | Released 6 November 2019

Analysis of sickness absence rates of workers in the UK labour market, including number of days lost and reasons for absence.

[Young people not in education, employment or training \(NEET\)](#)

Bulletin | Released 21 November 2019

Estimates of people in the UK aged between 16 and 24 years who are NEET.

[Working and workless households in the UK](#)

Bulletin | Released 27 November 2019

The economic status of households in the UK and the people living in them, in households where at least one person is aged between 16 and 64 years.

[Earnings and employment from Pay As You Earn Real Time Information, UK: April 2020](#)

Bulletin | Released 21 April 2020

[Experimental](#) monthly estimates of paid employees and their pay from HM Revenue and Customs' (HMRC) Pay As You Earn (PAYE) Real Time Information (RTI) data.

[Coronavirus \(COVID-19\) latest data and analysis](#)

Web page | Updated as and when data become available

Latest data and analysis on the coronavirus (COVID-19) in the UK and its effect on the economy and society.

[Business Impact of Coronavirus \(COVID-19\) Survey \(BICS\) questions: 23 March 2020 to 5 April 2020](#)

Article | Released 16 April 2020

Questions from the Business Impact of Coronavirus (COVID-19) Survey for the period 23 March to 5 April 2020 relating to the Coronavirus, the UK economy and society, faster indicators weekly bulletin.

[Coronavirus and self-employment in the UK](#)

Article | Released 17 April 2020

An overview of self-employment across the UK, looking at the industrial, occupational, geographic and demographic characteristics of those who are self-employed.

[Coronavirus and homeworking in the UK labour market: 2019](#)

Article | Released 24 March 2020

The extent to which different people in the labour market work from home, either on a regular or occasional basis.

Index of Tables

The table below provides an index of the tables appearing in this Statistical Bulletin and it shows how these table numbers match up with the Excel spreadsheet datasets which are available on the website at:

<https://www.ons.gov.uk/employmentandlabourmarket/peopleinwork/employmentandemployeetypes/bulletins/uklabourmarket/April2020/relateddata>

Statistical Bulletin table number	Table description	Dataset
	SUMMARY	
1	Labour Force Survey Summary	Dataset A02 SA
2 (*)	Labour market status by age group	Dataset A05 SA
	EMPLOYMENT AND JOBS	
3	Full-time, part-time & temporary workers	Dataset EMP01 SA
4	Public and private sector employment	Dataset EMP02
4(1)	Public sector employment by industry	Dataset EMP03
5	Workforce jobs summary	Dataset JOBS01
6 (**)	Workforce jobs by industry	Dataset JOBS02
7	Actual weekly hours worked	Dataset HOUR01 SA
7(1)	Usual weekly hours worked	Dataset HOUR02 SA
	NON-UK WORKERS	
8	Employment by country of birth and nationality	Dataset EMP06
8(1)	Unemployment and economic inactivity by country of birth and nationality	Dataset A12
	UNEMPLOYMENT	
9	Unemployment by age and duration	Dataset UNEM01 SA
	ECONOMIC ACTIVITY AND INACTIVITY	
10(*)	Economic activity by age	Dataset A05 SA
11	Economic inactivity by reason	Dataset INAC01 SA
12	Labour market and educational status of young people	Dataset A06 SA
	EARNINGS	
13	Average Weekly Earnings (nominal) - Total pay	Dataset EARN01
14	Average Weekly Earnings (nominal) - Bonus pay	Dataset EARN01
15	Average Weekly Earnings (nominal) - Regular pay	Dataset EARN01
16	Average Weekly Earnings real and nominal (summary table)	Dataset EARN01
	INTERNATIONAL SUMMARY	
17	International comparisons of employment and unemployment	Dataset A10
	LABOUR DISPUTES	
18	Labour disputes	Dataset LABD01
	VACANCIES	
19	Vacancies by size of business	Dataset VACS03
20	Vacancies and unemployment	Dataset VACS01
21	Vacancies by industry	Dataset VACS02
	REDUNDANCIES	
22	Redundancies levels and rates	Dataset RED01 SA
	REGIONAL SUMMARY	
23	Regional labour market summary	Dataset A07

(*) Tables 2 and 10 in the Statistical Bulletin pdf file have been amalgamated into one spreadsheet (Dataset A05 SA).

(**) Table JOBS02 provides more detail than Table 6 in the Statistical Bulletin pdf file.

The following symbols are used in the tables: p provisional, r revised, .. Not available, * suppressed due to small sample size.

The four-character identification codes appearing in the tables are the ONS references for the data series appearing in the Labour Market Statistics dataset which is available on the website at:

<https://www.ons.gov.uk/employmentandlabourmarket/peopleinwork/employmentandemployeetypes/datasets/labourmarketstatistics>

Summary of labour market statistics published on 21 April 2020

Series	Reference period	Latest estimate	Last time higher	Last time lower	Comparable data begins in
Employment level (aged 16 and over)	Dec-Feb 2020	33.073 million	Never	Nov-Jan 2020 (32.985 million)	Jan-Mar 1971
Employment rate (aged 16 to 64)	Dec-Feb 2020	76.6%	Never	Nov-Jan 2020 (76.5%)	Jan-Mar 1971
Unemployment level (aged 16 and over)	Dec-Feb 2020	1.364 million	Sep-Nov 2018 (1.37 million)	Nov-Jan 2020 (1.343 million)	Jan-Mar 1971
Unemployment rate (aged 16 and over)	Dec-Feb 2020	4.0%	Aug-Oct 2018 (4.1%)	Nov-Jan 2020 (3.9%)	Jan-Mar 1971
Inactivity level (aged 16 to 64)	Dec-Feb 2020	8.37 million	Nov-Jan 2020 (8.431 million)	Nov-Jan 1992 (8.356 million)	Jan-Mar 1971
Inactivity rate (aged 16 to 64)	Dec-Feb 2020	20.2%	Nov-Jan 2020 (20.4%)	Never	Jan-Mar 1971
Average Earnings (total pay - nominal)	Dec-Feb 2020	2.8%	Nov-Jan 2020 (3.1%)	May-Jul 2018 (2.6%)	Jan-Mar 2001
Average Earnings (regular pay - nominal)	Dec-Feb 2020	2.9%	Nov-Jan 2020 (3.1%)	Apr-Jun 2018 (2.7%)	Jan-Mar 2001
Average Earnings (total pay - real)	Dec-Feb 2020	1.2%	Nov-Jan 2020 (1.5%)	Aug-Oct 2019 (1.1%)	Jan-Mar 2001
Average Earnings (regular pay - real)	Dec-Feb 2020	1.3%	Nov-Jan 2020 (1.5%)	Oct-Dec 2018 (1.2%)	Jan-Mar 2001
Vacancies level	Jan-Mar 2020	795,000	Dec-Feb 2020 (817,000)	Jun-Aug 2017 (793,000)	Apr-Jun 2001

SUMMARY

1 Summary of headline LFS¹ indicators

United Kingdom (thousands)
seasonally adjusted

		LFS household population ¹		Headline indicators					
		Employment				Unemployment		Inactivity	
		Level		Rate ²		Level		Rate ³	
		All aged 16 & over	All aged 16 to 64	All aged 16 & over	All aged 16 to 64	All aged 16 & over	All aged 16 to 64	All aged 16 & over	All aged 16 to 64
		MGSL	LF2O	MGRZ	LF24	MGSC	MG SX	LF2M	LF2S
People									
	Dec-Feb 2018	52,906	41,212	32,264	75.4	1,419	4.2	8,749	21.2
	Dec-Feb 2019	53,184	41,297	32,721	76.1	1,343	3.9	8,536	20.7
	Mar-May 2019	53,252	41,317	32,749	76.0	1,292	3.8	8,619	20.9
	Jun-Aug 2019	53,321	41,339	32,693	75.9	1,314	3.9	8,676	21.0
	Sep-Nov 2019	53,391	41,363	32,901	76.3	1,306	3.8	8,506	20.6
	Dec-Feb 2020	53,463	41,388	33,073	76.6	1,364	4.0	8,370	20.2
	Change on quarter	71	25	172	0.2	58	0.1	-136	-0.3
	Change %	0.1	0.1	0.5		4.4		-1.6	
	Change on year	279	90	352	0.4	22	0.0	-166	-0.4
	Change %	0.5	0.2	1.1		1.6		-1.9	
Men		MGSM	YBTG	MGSA	MGSV	MGSD	MG SY	YBSO	YBTM
	Dec-Feb 2018	25,874	20,487	17,090	79.8	749	4.2	3,403	16.6
	Dec-Feb 2019	26,031	20,542	17,311	80.5	731	4.1	3,290	16.0
	Mar-May 2019	26,068	20,554	17,280	80.2	712	4.0	3,368	16.4
	Jun-Aug 2019	26,107	20,567	17,256	80.2	727	4.0	3,366	16.4
	Sep-Nov 2019	26,145	20,581	17,317	80.4	729	4.0	3,326	16.2
	Dec-Feb 2020	26,183	20,595	17,345	80.5	763	4.2	3,281	15.9
	Change on quarter	39	14	29	0.1	34	0.2	-45	-0.2
	Change %	0.1	0.1	0.2		4.6		-1.3	
	Change on year	153	54	34	0.0	32	0.2	-9	-0.1
	Change %	0.6	0.3	0.2		4.3		-0.3	
Women		MG SN	LF2P	MG SB	LF25	MG SE	MG SZ	LF2N	LF2T
	Dec-Feb 2018	27,031	20,725	15,173	71.0	670	4.2	5,347	25.8
	Dec-Feb 2019	27,153	20,756	15,409	71.8	611	3.8	5,246	25.3
	Mar-May 2019	27,184	20,763	15,469	72.0	580	3.6	5,251	25.3
	Jun-Aug 2019	27,215	20,772	15,437	71.6	586	3.7	5,310	25.6
	Sep-Nov 2019	27,247	20,782	15,584	72.3	577	3.6	5,180	24.9
	Dec-Feb 2020	27,279	20,792	15,728	72.7	601	3.7	5,089	24.5
	Change on quarter	33	11	143	0.3	24	0.1	-91	-0.4
	Change %	0.1	0.1	0.9		4.2		-1.8	
	Change on year	126	37	318	0.9	-10	-0.1	-157	-0.8
	Change %	0.5	0.2	2.1		-1.7		-3.0	

Source: Labour Force Survey

Labour market statistics enquiries: labour.market@ons.gov.uk

1. The Labour Force Survey (LFS) is a survey of households in the UK.

2. The headline employment rate is the number of people aged 16 to 64 in employment divided by the population aged 16 to 64.

3. The headline unemployment rate is the number of unemployed people (aged 16+) divided by the economically active population (aged 16+). The economically active population is defined as those in employment plus those who are unemployed.

4. The headline inactivity rate is the number of people aged 16 to 64 divided by the population aged 16-64.

Note on headline employment, unemployment and inactivity rates

The headline employment and inactivity rates are based on the population aged 16 to 64 but the headline unemployment rate is based on the economically active population aged 16 and over. The employment and inactivity rates for those aged 16 and over are affected by the inclusion of the retired population in the denominators and are therefore less meaningful than the rates for those aged from 16 to 64. However, for the unemployment rate for those aged 16 and over, no such effect occurs as the denominator for the unemployment rate is the economically active population which only includes people in work or actively seeking and able to work.

Note on headline employment, unemployment and inactivity levels

The headline employment and unemployment levels are for those aged 16 and over; they measure all people in work or actively seeking and able to work. However, the headline inactivity level is for those aged 16 to 64. The inactivity rate for those aged 16 and over is less meaningful as it includes elderly people who have retired from the labour force.

SUMMARY

2(1) Labour market status by age group

United Kingdom (thousands) seasonally adjusted

		Aged 16 and over						Aged 16-64					
		Employment		Unemployment		Inactivity		Employment		Unemployment		Inactivity	
		Level	Rate	Level	Rate	Level	Rate	Level	Rate	Level	Rate	Level	Rate
		MGRZ	MGSR	MGSC	MGSX	MGSI	YBTC	LF2G	LF24	LF2I	LF2Q	LF2M	LF2S
People	Dec-Feb 2018	32,264	61.0	1,419	4.2	19,223	36.3	31,064	75.4	1,399	4.3	8,749	21.2
	Dec-Feb 2019	32,721	61.5	1,343	3.9	19,120	36.0	31,438	76.1	1,323	4.0	8,536	20.7
	Mar-May 2019	32,749	61.5	1,292	3.8	19,211	36.1	31,421	76.0	1,276	3.9	8,619	20.9
	Jun-Aug 2019	32,693	61.3	1,314	3.9	19,315	36.2	31,365	75.9	1,297	4.0	8,676	21.0
	Sep-Nov 2019	32,901	61.6	1,306	3.8	19,184	35.9	31,577	76.3	1,280	3.9	8,506	20.6
	Dec-Feb 2020	33,073	61.9	1,364	4.0	19,026	35.6	31,687	76.6	1,331	4.0	8,370	20.2
	Change on quarter	172	0.2	58	0.1	-159	-0.3	110	0.2	51	0.1	-136	-0.3
	Change %	0.5		4.4		-0.8		0.3		4.0		-1.6	
	Change on year	352	0.3	22	0.0	-95	-0.4	249	0.4	8	0.0	-166	-0.4
	Change %	1.1		1.6		-0.5		0.8		0.6		-1.9	
Men		MGSA	MGSS	MGSD	MGSY	MGSJ	YBTD	YBSF	MGSV	YBSI	YBTJ	YBSO	YBTM
	Dec-Feb 2018	17,090	66.1	749	4.2	8,035	31.1	16,351	79.8	733	4.3	3,403	16.6
	Dec-Feb 2019	17,311	66.5	731	4.1	7,988	30.7	16,532	80.5	719	4.2	3,290	16.0
	Mar-May 2019	17,280	66.3	712	4.0	8,076	31.0	16,482	80.2	704	4.1	3,368	16.4
	Jun-Aug 2019	17,256	66.1	727	4.0	8,123	31.1	16,485	80.2	716	4.2	3,366	16.4
	Sep-Nov 2019	17,317	66.2	729	4.0	8,099	31.0	16,543	80.4	713	4.1	3,326	16.2
	Dec-Feb 2020	17,345	66.2	763	4.2	8,075	30.8	16,575	80.5	740	4.3	3,281	15.9
	Change on quarter	29	0.0	34	0.2	-24	-0.1	32	0.1	28	0.1	-45	-0.2
	Change %	0.2		4.6		-0.3		0.2		3.9		-1.3	
	Change on year	34	-0.3	32	0.2	87	0.2	42	0.0	21	0.1	-9	-0.1
	Change %	0.2		4.3		1.1		0.3		2.9		-0.3	
Women		MGSB	MGST	MGSE	MGSZ	MGSK	YBTE	LF2H	LF25	LF2J	LF2R	LF2N	LF2T
	Dec-Feb 2018	15,173	56.1	670	4.2	11,188	41.4	14,713	71.0	666	4.3	5,347	25.8
	Dec-Feb 2019	15,409	56.8	611	3.8	11,132	41.0	14,906	71.8	603	3.9	5,246	25.3
	Mar-May 2019	15,469	56.9	580	3.6	11,135	41.0	14,940	72.0	573	3.7	5,251	25.3
	Jun-Aug 2019	15,437	56.7	586	3.7	11,192	41.1	14,881	71.6	581	3.8	5,310	25.6
	Sep-Nov 2019	15,584	57.2	577	3.6	11,085	40.7	15,034	72.3	567	3.6	5,180	24.9
	Dec-Feb 2020	15,728	57.7	601	3.7	10,951	40.1	15,113	72.7	591	3.8	5,089	24.5
	Change on quarter	143	0.5	24	0.1	-135	-0.5	78	0.3	23	0.1	-91	-0.4
	Change %	0.9		4.2		-1.2		0.5		4.1		-1.8	
	Change on year	318	0.9	-10	-0.1	-182	-0.9	206	0.9	-12	-0.1	-157	-0.8
	Change %	2.1		-1.7		-1.6		1.4		-2.1		-3.0	
		Aged 16-17						Aged 18-24					
		Employment		Unemployment		Inactivity		Employment		Unemployment		Inactivity	
		Level	Rate	Level	Rate	Level	Rate	Level	Rate	Level	Rate	Level	Rate
		YBTO	YBUA	YBVH	YBVK	YCAS	LWEX	YBTR	YBUD	YBVN	YBVQ	YCAV	LWFA
People	Dec-Feb 2018	344	24.4	127	27.0	936	66.5	3,474	61.8	396	10.2	1,755	31.2
	Dec-Feb 2019	332	23.8	88	21.0	972	69.8	3,528	63.6	404	10.3	1,618	29.1
	Mar-May 2019	341	24.5	83	19.6	967	69.5	3,432	62.1	410	10.7	1,687	30.5
	Jun-Aug 2019	338	24.2	86	20.3	971	69.7	3,366	61.1	408	10.8	1,734	31.5
	Sep-Nov 2019	344	24.5	94	21.4	966	68.8	3,420	62.3	388	10.2	1,680	30.6
	Dec-Feb 2020	338	23.9	105	23.8	970	68.7	3,487	63.8	408	10.5	1,574	28.8
	Change on quarter	-7	-0.6	12	2.4	4	-0.2	66	1.4	20	0.3	-106	-1.8
	Change %	-1.9		12.6		0.4		1.9		5.1		-6.3	
	Change on year	6	0.1	17	2.8	-2	-1.2	-42	0.2	4	0.2	-44	-0.4
	Change %	1.7		19.5		-0.2		-1.2		0.9		-2.7	
Men		YBTP	YBUB	YBVI	YBVL	YCAT	LWEY	YBTS	YBUE	YBVO	YBVR	YCAW	LWFB
	Dec-Feb 2018	163	22.7	61	27.0	496	68.9	1,788	62.3	229	11.3	854	29.8
	Dec-Feb 2019	161	22.6	50	23.8	502	70.3	1,813	64.0	248	12.0	773	27.3
	Mar-May 2019	156	21.8	47	23.0	511	71.6	1,750	62.0	249	12.5	824	29.2
	Jun-Aug 2019	156	21.9	50	24.2	508	71.1	1,736	61.7	246	12.4	831	29.5
	Sep-Nov 2019	153	21.2	53	25.7	514	71.4	1,758	62.7	240	12.0	805	28.7
	Dec-Feb 2020	148	20.4	62	29.4	514	71.0	1,795	64.3	240	11.8	758	27.1
	Change on quarter	-5	-0.8	9	3.8	1	-0.4	37	1.6	0	-0.2	-48	-1.6
	Change %	-3.2		16.9		0.1		2.1		0.2		-5.9	
	Change on year	-13	-2.2	11	5.6	13	0.7	-19	0.3	-8	-0.2	-16	-0.1
	Change %	-8.2		22.5		2.5		-1.0		-3.2		-2.0	
Women		YBTQ	YBUC	YBVJ	YBVM	YCAU	LWEZ	YBTT	YBUF	YBVP	YBVS	YCAC	LWFC
	Dec-Feb 2018	180	26.3	67	27.0	439	64.0	1,686	61.2	167	9.0	900	32.7
	Dec-Feb 2019	171	25.1	38	18.1	471	69.3	1,715	63.2	156	8.3	844	31.1
	Mar-May 2019	186	27.4	36	16.4	457	67.3	1,682	62.2	160	8.7	863	31.9
	Jun-Aug 2019	181	26.6	36	16.5	463	68.1	1,630	60.5	162	9.1	903	33.5
	Sep-Nov 2019	192	28.0	41	17.6	452	66.1	1,663	61.9	148	8.2	875	32.6
	Dec-Feb 2020	190	27.5	44	18.7	456	66.1	1,692	63.2	168	9.0	816	30.5
	Change on quarter	-2	-0.5	3	1.2	4	0.1	29	1.3	19	0.8	-58	-2.1
	Change %	-1.0		7.1		0.8		1.7		13.1		-6.6	
	Change on year	19	2.4	6	0.6	-15	-3.2	-23	0.1	12	0.7	-28	-0.6
	Change %	11.1		15.7		-3.2		-1.4		7.4		-3.3	

SUMMARY

2(2) Labour market status by age group

United Kingdom (thousands) seasonally adjusted

People		Aged 25-34						Aged 35-49					
		Employment		Unemployment		Inactivity		Employment		Unemployment		Inactivity	
		Level	Rate	Level	Rate	Level	Rate	Level	Rate	Level	Rate	Level	Rate
		YBTU	YBUG	YCGM	YCGP	YCAV	LWFD	YBTX	YBUJ	YCGS	YCGV	YCBB	LWFG
	Dec-Feb 2018	7,436	83.5	293	3.8	1,177	13.2	10,889	85.1	309	2.8	1,601	12.5
	Dec-Feb 2019	7,543	84.3	269	3.4	1,136	12.7	10,876	85.3	292	2.6	1,579	12.4
	Mar-May 2019	7,570	84.5	248	3.2	1,139	12.7	10,882	85.5	276	2.5	1,577	12.4
	Jun-Aug 2019	7,550	84.2	272	3.5	1,140	12.7	10,866	85.4	276	2.5	1,584	12.4
	Sep-Nov 2019	7,611	85.0	267	3.4	1,080	12.1	10,906	85.7	274	2.5	1,543	12.1
	Dec-Feb 2020	7,639	85.3	254	3.2	1,063	11.9	10,911	85.8	278	2.5	1,534	12.1
	Change on quarter	28	0.3	-14	-0.2	-17	-0.2	4	0.0	4	0.0	-10	-0.1
	Change %	0.4		-5.1		-1.6		0.0		1.3		-0.6	
	Change on year	96	1.0	-15	-0.2	-73	-0.8	35	0.4	-14	-0.1	-46	-0.3
	Change %	1.3		-5.7		-6.4		0.3		-4.8		-2.9	
Men		YBTU		YBUG		YCAV		YBTX		YCGS		YCBB	
		YBTU	YBUG	YCGM	YCGP	YCAV	LWFD	YBTX	YBUJ	YCGS	YCGV	YCBB	LWFG
		YBTU	YBUG	YCGM	YCGP	YCAV	LWFD	YBTX	YBUJ	YCGS	YCGV	YCBB	LWFG
		YBTU	YBUG	YCGM	YCGP	YCAV	LWFD	YBTX	YBUJ	YCGS	YCGV	YCBB	LWFG
	Dec-Feb 2018	4,009	90.0	142	3.4	303	6.8	5,736	90.8	146	2.5	435	6.9
	Dec-Feb 2019	4,050	90.2	141	3.4	299	6.7	5,738	91.2	131	2.2	425	6.7
	Mar-May 2019	4,061	90.3	139	3.3	298	6.6	5,743	91.3	127	2.2	417	6.6
	Jun-Aug 2019	4,050	90.0	144	3.4	308	6.8	5,750	91.5	128	2.2	407	6.5
	Sep-Nov 2019	4,075	90.5	141	3.3	288	6.4	5,734	91.3	135	2.3	415	6.6
	Dec-Feb 2020	4,072	90.4	135	3.2	298	6.6	5,729	91.2	138	2.3	418	6.6
	Change on quarter	-3	-0.1	-6	-0.1	10	0.2	-6	-0.1	3	0.0	3	0.1
	Change %	-0.1		-4.2		3.5		-0.1		1.9		0.8	
	Change on year	22	0.2	-6	-0.2	-1	0.0	-9	0.0	7	0.1	-7	-0.1
	Change %	0.5		-4.3		-0.3		-0.2		5.4		-1.6	
Women		YBTU		YBUG		YCAV		YBTX		YCGS		YCBB	
		YBTU	YBUG	YCGM	YCGP	YCAV	LWFD	YBTX	YBUJ	YCGS	YCGV	YCBB	LWFG
		YBTU	YBUG	YCGM	YCGP	YCAV	LWFD	YBTX	YBUJ	YCGS	YCGV	YCBB	LWFG
		YBTU	YBUG	YCGM	YCGP	YCAV	LWFD	YBTX	YBUJ	YCGS	YCGV	YCBB	LWFG
	Dec-Feb 2018	3,427	77.0	151	4.2	874	19.6	5,153	79.5	163	3.1	1,166	18.0
	Dec-Feb 2019	3,493	78.3	128	3.5	837	18.8	5,138	79.6	161	3.0	1,155	17.9
	Mar-May 2019	3,510	78.7	109	3.0	841	18.9	5,139	79.7	149	2.8	1,160	18.0
	Jun-Aug 2019	3,499	78.5	128	3.5	832	18.7	5,116	79.4	148	2.8	1,177	18.3
	Sep-Nov 2019	3,536	79.4	126	3.4	793	17.8	5,172	80.3	139	2.6	1,129	17.5
	Dec-Feb 2020	3,567	80.1	119	3.2	765	17.2	5,182	80.5	140	2.6	1,116	17.3
	Change on quarter	31	0.8	-8	-0.2	-27	-0.6	10	0.2	1	0.0	-13	-0.2
	Change %	0.9		-6.2		-3.5		0.2		0.8		-1.1	
	Change on year	74	1.8	-9	-0.3	-72	-1.6	44	0.9	-21	-0.4	-39	-0.6
	Change %	2.1		-7.3		-8.6		0.9		-13.1		-3.4	
People		Aged 50-64				Aged 65+				Aged 65+			
		Employment		Unemployment		Inactivity		Employment		Unemployment		Inactivity	
		Level	Rate	Level	Rate	Level	Rate	Level	Rate	Level	Rate	Level	Rate
		LF26	LF2U	LF28	LF2E	LF2A	LF2W	LFK4	LFK6	K5HU	K5HW	LFL4	LFL6
	Dec-Feb 2018	8,921	71.5	274	3.0	3,281	26.3	1,200	10.3	20	1.6	10,474	89.6
	Dec-Feb 2019	9,159	72.4	269	2.9	3,231	25.5	1,282	10.8	20	1.5	10,584	89.0
	Mar-May 2019	9,196	72.4	260	2.7	3,249	25.6	1,328	11.1	16	1.2	10,592	88.7
	Jun-Aug 2019	9,246	72.5	255	2.7	3,247	25.5	1,327	11.1	16	1.2	10,639	88.8
	Sep-Nov 2019	9,295	72.7	256	2.7	3,236	25.3	1,324	11.0	26	2.0	10,679	88.8
	Dec-Feb 2020	9,314	72.6	286	3.0	3,229	25.2	1,386	11.5	33	2.3	10,656	88.2
	Change on quarter	18	-0.1	29	0.3	-7	-0.1	62	0.5	7	0.4	-23	-0.5
	Change %	0.2		11.4		-0.2		4.7		26.4		-2.3	
	Change on year	154	0.2	17	0.1	-2	-0.4	104	0.7	13	0.8	72	-0.8
	Change %	1.7		6.2		-0.1		8.1		66.0		0.7	
Men		MGUX		YBUN		MGVB		MGVA		MGVP		MGWE	
		MGUX	YBUN	MGVM	MGXF	MGWB	LWFK	MGVA	YBUQ	MGVP	MGXI	MGWE	LWFN
		MGUX	YBUN	MGVM	MGXF	MGWB	LWFK	MGVA	YBUQ	MGVP	MGXI	MGWE	LWFN
		MGUX	YBUN	MGVM	MGXF	MGWB	LWFK	MGVA	YBUQ	MGVP	MGXI	MGWE	LWFN
	Dec-Feb 2018	4,655	76.0	156	3.2	1,314	21.5	739	13.7	16	2.1	4,632	86.0
	Dec-Feb 2019	4,770	76.8	149	3.0	1,292	20.8	779	14.2	12	1.5	4,698	85.6
	Mar-May 2019	4,772	76.6	142	2.9	1,319	21.2	799	14.5	9	1.1	4,707	85.4
	Jun-Aug 2019	4,792	76.6	148	3.0	1,312	21.0	771	13.9	11	1.4	4,757	85.9
	Sep-Nov 2019	4,823	76.9	144	2.9	1,304	20.8	774	13.9	17	2.1	4,773	85.8
	Dec-Feb 2020	4,832	76.8	165	3.3	1,293	20.6	771	13.8	23	2.9	4,794	85.8
	Change on quarter	9	-0.1	21	0.4	-11	-0.2	-3	-0.1	6	0.8	21	0.0
	Change %	0.2		14.9		-0.9		-0.4		37.6		0.4	
	Change on year	62	0.0	16	0.3	1	-0.2	-8	-0.4	11	1.4	96	0.2
	Change %	1.3		10.9		0.1		-1.1		91.8		2.0	
Women		LF27		LF2V		LF2B		LFK5		K5HV		LFL5	
		LF27	LF2V	LF29	LF2F	LF2B	LF2X	LFK5	LFK7	K5HV	K5HX	LFL5	LFL7
		LF27	LF2V	LF29	LF2F	LF2B	LF2X	LFK5	LFK7	K5HV	K5HX	LFL5	LFL7
		LF27	LF2V	LF29	LF2F	LF2B	LF2X	LFK5	LFK7	K5HV	K5HX	LFL5	LFL7
	Dec-Feb 2018	4,266	67.2	118	2.7	1,967	31.0	461	7.3	*	*	5,841	92.6
	Dec-Feb 2019	4,390	68.1	120	2.7	1,939	30.1	503	7.9	8	1.6	5,886	92.0
	Mar-May 2019	4,424	68.4	118	2.6	1,930	29.8	529	8.2	7	1.4	5,884	91.6
	Jun-Aug 2019	4,454	68.6	106	2.3	1,935	29.8	556	8.6	5	1.0	5,882	91.3
	Sep-Nov 2019	4,472	68.6	113	2.5	1,932	29.6	550	8.5	10	1.7	5,905	91.3
	Dec-Feb 2020	4,482	68.6	120	2.6	1,936	29.6	615	9.5	10	1.7	5,862	90.4
	Change on quarter	10	-0.1	8	0.2	4	0.0	65	1.0	1	-0.1	-44	-1.0
	Change %	0.2		6.9		0.2		11.8		7.1		-0.7	
	Change on year	92	0.5	1	0.0	-3	-0.5	112	1.6	2	0.1	-25	-1.7
	Change %	2.1		0.4		-0.2		22.2		28.1		-0.4	

Source: Labour Force Survey

Labour market statistics enquiries: labour.market@ons.gov.uk

EMPLOYMENT AND JOBS

3 Full-time, part-time and temporary workers

United Kingdom (thousands of people aged 16 and over) seasonally adjusted

All in employment						Full-time and part-time workers ¹							Total Workers with second jobs
People	Total	Employees	Self employed	Unpaid family workers	Government supported training & employment programmes ²	Total people working full-time	total people working part-time	Employees working full-time	Employees working part-time	Self-employed people working full-time	Self-employed people working part-time		
	1	2	3	4	5	6	7	8	9	10	11		
	MGRZ	MGRN	MGRQ	MGRT	MGRW	YCBE	YCBH	YCBK	YCBN	YCBQ	YCBT	YCBW	
Dec-Feb 2018	32,264	27,342	4,756	108	57	23,673	8,590	20,311	7,031	3,314	1,442	1,152	
Dec-Feb 2019	32,721	27,711	4,833	134	43	24,146	8,575	20,684	7,027	3,414	1,418	1,129	
Mar-May 2019	32,749	27,626	4,955	127	40	24,088	8,661	20,606	7,020	3,433	1,522	1,153	
Jun-Aug 2019	32,693	27,577	4,930	129	57	24,160	8,533	20,611	6,965	3,497	1,433	1,147	
Sep-Nov 2019	32,901	27,711	5,001	134	54	24,357	8,544	20,761	6,951	3,545	1,456	1,130	
Dec-Feb 2020	33,073	27,856	5,028	129	61	24,455	8,618	20,868	6,988	3,529	1,499	1,215	
Change on quarter	172	144	27	-6	6	98	74	107	37	-16	43	86	
Change %	0.5	0.5	0.5	-4.3	11.8	0.4	0.9	0.5	0.5	-0.4	3.0	7.6	
Change on year	352	145	195	-5	17	309	43	184	-39	115	81	86	
Change %	1.1	0.5	4.0	-4.0	39.7	1.3	0.5	0.9	-0.6	3.4	5.7	7.6	
Men	MGSA	MGRO	MGRR	MGRU	MGRX	YCBF	YCBJ	YCBM	YCBP	YCBS	YCBV	YCBY	
Dec-Feb 2018	17,090	13,878	3,137	44	31	14,816	2,274	12,205	1,673	2,584	554	493	
Dec-Feb 2019	17,311	13,969	3,258	61	24	15,052	2,259	12,353	1,616	2,673	584	472	
Mar-May 2019	17,280	13,897	3,294	66	23	14,961	2,319	12,279	1,618	2,656	638	482	
Jun-Aug 2019	17,256	13,867	3,297	58	34	15,023	2,233	12,281	1,585	2,711	585	485	
Sep-Nov 2019	17,317	13,916	3,308	64	29	15,094	2,223	12,331	1,585	2,729	579	462	
Dec-Feb 2020	17,345	13,942	3,313	58	32	15,119	2,226	12,366	1,577	2,720	593	520	
Change on quarter	29	26	5	-6	4	25	4	35	-9	-9	14	59	
Change %	0.2	0.2	0.2	-9.2	12.4	0.2	0.2	0.3	-0.6	-0.3	2.4	12.7	
Change on year	34	-26	55	-3	8	67	-33	13	-39	47	8	48	
Change %	0.2	-0.2	1.7	-5.2	34.5	0.4	-1.4	0.1	-2.4	1.8	1.4	10.1	
Women	MGSB	MGRP	MGRS	MGRV	MGRY	YCBG	YCBJ	YCBM	YCBP	YCBS	YCBV	YCBY	
Dec-Feb 2018	15,173	13,465	1,619	63	27	8,857	6,317	8,106	5,358	730	889	660	
Dec-Feb 2019	15,409	13,742	1,575	73	20	9,093	6,316	8,331	5,411	741	834	657	
Mar-May 2019	15,469	13,729	1,661	61	17	9,126	6,342	8,328	5,402	777	884	671	
Jun-Aug 2019	15,437	13,710	1,633	70	23	9,138	6,299	8,330	5,380	786	848	662	
Sep-Nov 2019	15,584	13,795	1,693	70	26	9,263	6,321	8,430	5,365	816	877	668	
Dec-Feb 2020	15,728	13,913	1,715	71	29	9,336	6,392	8,502	5,412	809	907	695	
Change on quarter	143	118	22	0	3	72	71	72	46	-7	29	27	
Change %	0.9	0.9	1.3	0.1	11.1	0.8	1.1	0.9	0.9	-0.9	3.3	4.1	
Change on year	318	171	140	-2	9	242	76	171	0	68	72	38	
Change %	2.1	1.2	8.9	-2.9	46.1	2.7	1.2	2.1	0.0	9.1	8.7	5.8	
Temporary employees (reasons for temporary working)						Part-time workers (reasons for working part-time) ³							
People	Total as % of all employees	Could not find permanent job	% that could not find permanent job	Did not want permanent job	Had a contract with period of training	Some other reason	Total ⁴	Could not find full-time job	% that could not find full-time job	Did not want full-time job	Ill or disabled	Student or at school	
	13	14	15	16	17	18	19	20	21	22	23	24	25
	YCCB	YCCD	YCCG	YCCJ	YCCM	YCCP	YCCS	YCCV	YCCY	YCCB	YCCD	YCCD	YCCD
Dec-Feb 2018	1,559	5.7	452	29.0	432	157	518	8,474	1,014	12.0	6,037	249	1,121
Dec-Feb 2019	1,545	5.6	408	26.4	453	136	548	8,446	950	11.2	6,094	262	1,069
Mar-May 2019	1,467	5.3	366	24.9	462	130	510	8,542	931	10.9	6,188	280	1,077
Jun-Aug 2019	1,398	5.1	335	24.0	366	135	562	8,399	869	10.3	6,108	276	1,085
Sep-Nov 2019	1,459	5.3	373	25.5	393	120	574	8,407	907	10.8	6,078	283	1,086
Dec-Feb 2020	1,476	5.3	382	25.9	421	117	555	8,487	889	10.5	6,126	302	1,125
Change on quarter	17	0.0	10	0.4	29	-3	-19	80	-18	-0.3	48	19	39
Change %	1.2		2.6	7.3	-2.5	-3.3	1.0	-2.0		0.8	6.6	3.6	
Change on year	-70	-0.3	-26	-0.5	-32	-19	7	41	-60	-0.8	31	40	56
Change %	-4.5		-6.3	-7.0	-14.1	1.2	0.5	-6.4		0.5	15.1	5.2	
Men	YCCA	YCCD	YCCG	YCCJ	YCCM	YCCP	YCCS	YCCV	YCCY	YCCB	YCCD	YCCD	YCCD
Dec-Feb 2018	745	5.4	235	31.5	189	79	242	2,227	467	21.0	1,184	80	473
Dec-Feb 2019	707	5.1	216	30.5	181	71	239	2,200	414	18.8	1,229	95	433
Mar-May 2019	664	4.8	187	28.2	193	60	224	2,256	404	17.9	1,296	94	436
Jun-Aug 2019	638	4.6	167	26.2	149	64	258	2,171	375	17.3	1,262	91	423
Sep-Nov 2019	699	5.0	197	28.2	172	69	262	2,164	374	17.3	1,245	97	428
Dec-Feb 2020	672	4.8	180	26.8	193	58	242	2,169	358	16.5	1,252	102	443
Change on quarter	-27	-0.2	-17	-1.4	21	-11	-20	5	-16	-0.8	7	5	14
Change %	-3.9		-8.7	12.4	-15.9	-7.7	0.2	-4.3		0.6	5.1	3.3	
Change on year	-34	-0.2	-36	-3.8	12	-13	3	-31	-55	-2.3	23	7	10
Change %	-4.8		-16.6	6.4	-18.2	1.2	-1.4	-13.4		1.9	7.2	2.3	
Women	YCCB	YCCD	YCCG	YCCJ	YCCM	YCCP	YCCS	YCCV	YCCY	YCCB	YCCD	YCCD	YCCD
Dec-Feb 2018	814	6.0	217	26.6	243	78	276	6,247	547	8.7	4,853	169	648
Dec-Feb 2019	839	6.1	193	23.0	272	65	309	6,246	536	8.6	4,866	168	637
Mar-May 2019	802	5.8	178	22.2	269	70	285	6,286	526	8.4	4,893	186	641
Jun-Aug 2019	760	5.5	168	22.1	217	71	304	6,228	494	7.9	4,846	186	663
Sep-Nov 2019	759	5.5	176	23.1	221	51	312	6,243	533	8.5	4,833	187	657
Dec-Feb 2020	803	5.8	203	25.2	228	59	313	6,318	531	8.4	4,874	200	682
Change on quarter	44	0.3	27	2.1	7	8	2	76	-2	-0.1	41	14	25
Change %	5.8		15.4	3.4	15.4	0.5	1.2	-0.4		0.8	7.3	3.8	
Change on year	-36	-0.3	10	2.3	-43	-6	4	72	-5	-0.2	8	33	46
Change %	-4.2		5.2	-15.9	-9.6	1.3	1.2	-0.9		0.2	19.6	7.2	

Relationship between columns: 1= 2+3+4+5; 1=6+7; 2=8+9; 3=10+11; 13=15+17+18+19; 20=9+11; 14=13/2; 16=15/13; 22=21/20

1. The split between full-time and part-time employment is based on respondents' self-classification.

2. This series does not include all people on these programmes; it only includes those engaging in any form of work, work experience or work-related training.

3. These series cover Employees and Self-employed only. These series include some temporary employees recorded in columns 13 to 19.

4. The total includes those who did not give a reason for working part-time and it therefore does not equal the sum of columns 21, 23, 24 and 25.

Source: Labour Force Survey

Labour market statistics enquiries: labour.market@ons.gov.uk

EMPLOYMENT AND JOBS

4 Public and private sector employment

(first published on 17 March 2020)

United Kingdom (thousands of people aged 16 and over), seasonally adjusted									
Public sector		Private sector ¹		Total employment ²	Public sector excluding effects of major reclassifications (See Explanatory note at bottom of table)		Private sector excluding effects of major reclassifications (See Explanatory note at bottom of table)		
(000s)	(%)	(000s)	(%)	(000s)	(000s)	(%)	(000s)	(%)	
1	2	3	4	5	6	7	8	9	
G7AU	G9BZ	G7K5	G9C2	G7GO	MFY7	MFY9	MFZ2	MFY5	
Sep 17	5,476	17.1	26,618	82.9	32,094	5,219	16.3	26,875	83.7
Dec 17	5,343	16.6	26,898	83.4	32,241	5,224	16.2	27,017	83.8
Mar 18	5,351	16.5	27,038	83.5	32,389	5,233	16.2	27,156	83.8
Jun 18	5,352	16.5	27,056	83.5	32,408	5,247	16.2	27,161	83.8
Sep 18	5,345	16.5	27,147	83.5	32,492	5,257	16.2	27,235	83.8
Dec 18	5,359	16.4	27,355	83.6	32,714	5,271 r	16.1	27,443 r	83.9
Mar 19	5,376	16.4	27,370	83.6	32,746	5,287	16.1	27,459	83.9
Jun 19	5,398	16.5	27,379	83.5	32,777	5,307	16.2	27,470	83.8
Sep 19	5,423 r	16.5	27,378 r	83.5	32,801	5,336 r	16.3	27,465 r	83.7
Dec 19	5,438	16.5	27,547	83.5	32,985	5,349	16.2	27,636	83.8
Change on quarter	15	0.0	169	0.0	184	13	-0.1	171	0.1
Change %	0.3	-	0.6	-	0.6	0.2	-	0.6	-
Change on year	79	0.1	192	-0.1	271	78	0.1	193	-0.1
Change %	1.5	-	0.7	-	0.8	1.5	-	0.7	-

Enquiries 01633 455400

Source: Labour Force Survey (LFS) and returns from public sector organisations

Relationship between columns: 2 = 1/5*100; 3 = 5-1; 4 = 3/5*100, 5=6+8

See footnotes under table 4(1)

4(1) Public sector employment by industry

(first published on 17 March 2020)

United Kingdom (thousands of people aged 16 and over), seasonally adjusted									
Construction	HM Forces ³	Police (including civilians)	Public administration	Of which: Civil Service ⁴	Education	National Health Service	Other health and social work	Other (including financial corporations)	Total public sector employment ⁵
1	2	3	4	5	6	7	8	9	10
G7ER	G7EU	G7EX	G7F2	G7D6	G7F5	G7FG	G7FJ	G7FM	G7AU
Sep 17	39	155	245	1,016	423	1,499	1,628	273	5,476
Dec 17	38	155	246	1,019	427	1,495	1,639	231	5,343
Mar 18	35	155	246	1,024	430	1,498	1,642	229	5,351
Jun 18	35	153	247	1,029	431	1,501	1,650	222	5,352
Sep 18	35	153	247	1,033	436	1,495	1,662	216	5,345
Dec 18	35	151	247	1,040	440	1,496 r	1,670 r	215	5,359
Mar 19	36	153	249	1,051	446	1,494	1,683	215	5,376
Jun 19	36	152	249	1,054	448	1,496	1,696	215	5,398
Sep 19	35 r	153	252 r	1,056	451	1,497 r	1,711 r	214 r	5,423
Dec 19	35	153	252	1,065	453	1,493	1,725	213	5,438
Change on quarter	0	0	0	9	2	-4	14	-1	15
Change %	0.0	0.0	0.0	0.9	0.4	-0.3	0.8	-0.5	0.3
Change on year	0	2	5	25	13	-3	55	-2	79
Change %	0.0	1.3	2.0	2.4	3.0	-0.2	3.3	-0.9	1.5

Enquiries 01633 455400

Source: returns from public sector organisations

Explanatory Note: The public and private sector employment series have been affected by a number of major reclassifications where bodies employing large numbers of people have moved between the public and private sectors. These major reclassifications are as follows:

Further Education corporations and Sixth Form College corporations in England are included in the private sector from June 2012 but in the public sector for earlier time periods.

Royal Mail plc is included in the private sector from December 2013 but in the public sector for earlier time periods.

Lloyds Banking Group plc is included in the public sector from December 2008 to December 2013 but in the private sector for earlier and later time periods.

Royal Bank of Scotland plc is included in the public sector from December 2008 but in the private sector for earlier time periods.

Network Rail is included in the private sector before December 2002. From December 2002 onwards it is included in the public sector (except for the period from June 2003 to March 2004, when it is included in the private sector).

Northern Rock is included in the public sector from December 2007 until December 2011 but in the private sector for earlier and later time periods.

Bradford and Bingley is included in the public sector from September 2008 but in the private sector for earlier time periods.

Welsh Further Education colleges are included in the private sector from March 2015 but in the public sector for earlier time periods.

Housing associations in England are included in the public sector between September 2008 and September 2017; they are in the private sector for earlier and later time periods.

Housing associations in Scotland are included in the public sector from September 2001 until June 2018; they are included in the private sector for earlier and later time periods.

Housing associations in Wales are included in the private sector from June 2018; they are included in the public sector for earlier time periods.

Housing associations in Northern Ireland are included in the public sector back to the start of the time series in March 1999.

The series shown at Table 4 (in columns 6 to 9) for public and private sector employment excluding the effects of major reclassifications show all of the above mentioned bodies included in the private sector for all time periods and excluded from the public sector for all time periods. When using figures from this table, the latest estimate of the number of people employed in the public and private sectors should be taken from columns 1 and 3 respectively. However the quarterly and annual changes in employment shown in these columns are affected by reclassifications. Figures from columns 6 and 8 should be used for assessments of the recent underlying changes in public and private sector employment. The changes in employment shown in these columns are measured on a consistent basis to remove the effect of major reclassifications.

1. Estimated as the difference between LFS total employment and the data from public sector organisations.

2. LFS employment data for March refer to February-April, June refers to May-July, September refers to August-October and December refers to November-January.

3. This series excludes locally engaged staff stationed outside the United Kingdom.

EMPLOYMENT AND JOBS

5 Workforce jobs

(first published on 17 March 2020)

United Kingdom (thousands), seasonally adjusted					
	Workforce jobs	Employee jobs	Self-employment jobs ¹	HM Forces	Government-supported trainees ¹
	1	2	3	4	5
	DYDC	BCAJ	DYZN	LOJX	LOJU
Dec 17	34,874	30,206	4,481	155	31
Mar 18	34,975	30,293	4,500	154	28
Jun 18	35,012	30,295	4,537	153	28
Sep 18	35,101	30,444	4,481	153	23
Dec 18	35,291	30,530	4,589	152	21
Mar 19	35,542	30,705	4,658	153	27
Jun 19	35,676	30,810	4,673	152	41
Sep 19 (r)	35,764	30,965	4,618	153	29
Dec 19 (p)	35,832	30,952	4,692	153	35
Change on quarter	67	-13	74	0	6
Change %	0.2	0.0	1.6	-0.1	21.0
Change on year	541	423	103	1	14
Change %	1.5	1.4	2.2	0.9	64.2

Relationship between columns: 1=2+3+4+5

See footnotes under table 6

6 Workforce jobs by industry

(first published on 17 March 2020)

Standard Industrial Classification (2007)											
United Kingdom (thousands), seasonally adjusted											
SIC 2007 sections	All jobs A-T	Agriculture, forestry & fishing A	Mining & quarrying B	Manufacturing C	Electricity, gas, steam & air conditioning supply D	Water supply, sewerage, waste & remediation activities E	Construction F	Wholesale & retail trade; repair of motor vehicles and motor cycles G	Transport & storage H	Accommodation & food service activities I	Information & communication J
	DYDC	JWR5	JWR6	JWR7	JWR8	JWR9	JWS2	JWS3	JWS4	JWS5	JWS6
Dec 17	34,874	422	59	2,697	144	228	2,330	4,994	1,690	2,353	1,461
Mar 18	34,975	413	62	2,697	147	226	2,315	4,996	1,696	2,398	1,478
Jun 18	35,012	407	63	2,713	150	227	2,310	4,997	1,733	2,432	1,478
Sep 18	35,101	410	61	2,695	154	227	2,322	4,998	1,741	2,419	1,462
Dec 18	35,291	375	59	2,686	149	231	2,343	5,000	1,799	2,452	1,480
Mar 19	35,542	386	60	2,717	143	241	2,344	5,017	1,784	2,456	1,508
Jun 19	35,676	391	58	2,709	145	243	2,305	5,010	1,825	2,495	1,513
Sep 19 (r)	35,764	408	57	2,717	144	246	2,265	4,979	1,805	2,492	1,524
Dec 19 (p)	35,832	411	58	2,704	154	241	2,310	4,967	1,799	2,513	1,536
Change on quarter	67	3	1	-13	10	-5	44	-12	-6	21	11
Change %	0.2	0.7	2.0	-0.5	7.2	-2.0	2.0	-0.2	-0.3	0.8	0.7
Change on year	541	36	0	18	5	10	-34	-33	1	61	56
Change %	1.5	9.7	-0.1	0.7	3.3	4.3	-1.4	-0.7	0.0	2.5	3.7

SIC 2007 sections	Financial & insurance activities K	Real estate activities L	Professional scientific & technical activities M	Administrative & support service activities N	Public admin & defence; compulsory social security ² O	Education P	Human health & social work activities Q	Arts, entertainment & recreation R	Other service activities S	People employed by households, etc. T	Total services G-T
	JWS7	JWS8	JWS9	JWT2	JWT3	JWT4	JWT5	JWT6	JWT7	KW78	JWT8
Dec 17	1,114	589	3,028	3,018	1,482	2,917	4,358	1,019	914	56	28,993
Mar 18	1,125	591	3,031	3,014	1,486	2,939	4,359	1,006	937	59	29,115
Jun 18	1,111	564	3,037	3,030	1,493	2,935	4,335	1,005	925	68	29,143
Sep 18	1,123	587	3,093	3,046	1,495	2,937	4,350	1,000	919	60	29,231
Dec 18	1,118	597	3,143	3,031	1,506	2,954	4,359	1,014	947	49	29,448
Mar 19	1,126	582	3,210	3,036	1,513	2,963	4,413	1,026	960	59	29,652
Jun 19	1,123	593	3,251	3,042	1,511	2,952	4,463	1,016	967	63	29,826
Sep 19 (r)	1,128	627	3,247	3,062	1,523	2,971	4,491	1,026	994	56	29,927
Dec 19 (p)	1,127	659	3,225	3,042	1,531	2,981	4,477	1,035	1,008	54	29,954
Change on quarter	-2	31	-22	-19	8	10	-15	9	14	-2	26
Change %	-0.2	5.0	-0.7	-0.6	0.5	0.3	-0.3	0.9	1.4	-3.3	0.1
Change on year	9	62	83	11	25	27	117	21	61	5	505
Change %	0.8	10.3	2.6	0.4	1.7	0.9	2.7	2.1	6.5	10.6	1.7

Workforce jobs enquiries 01633 456776

Sources: Employer surveys, Labour Force Survey and administrative sources

EMPLOYMENT AND JOBS

7 Actual weekly hours worked

United Kingdom (hours worked by people aged 16 and over), seasonally adjusted

	Total weekly hours (millions) ¹²	Average (mean) actual weekly hours worked			
		All workers ¹	Full-time workers ³	Part-time workers ³	Second Jobs
People	YBUS	YBUV	YBUY	YBVB	YBVE
Dec-Feb 2018	1,031.7	32.0	37.2	16.3	9.9
Dec-Feb 2019	1,052.9	32.2	37.4	16.3	9.7
Mar-May 2019	1,052.4	32.1	37.4	16.3	9.6
Jun-Aug 2019	1,049.2	32.1	37.3	16.3	10.1
Sep-Nov 2019	1,054.1	32.0	37.1	16.3	9.5
Dec-Feb 2020	1,052.2	31.8	36.9	16.2	9.7
Change on quarter	-1.9	-0.2	-0.3	-0.2	0.3
Change %	-0.2	-0.7	-0.7	-1.1	3.0
Change on year	-0.7	-0.4	-0.6	-0.1	0.1
Change %	-0.1	-1.1	-1.5	-0.8	0.6
Men	YBUT	YBUW	YBUZ	YBVC	YBVF
Dec-Feb 2018	621.9	36.4	39.1	16.2	10.9
Dec-Feb 2019	632.3	36.5	39.2	16.4	10.5
Mar-May 2019	626.3	36.2	39.0	16.2	10.7
Jun-Aug 2019	626.5	36.3	39.0	16.3	10.7
Sep-Nov 2019	626.4	36.2	38.8	16.2	10.3
Dec-Feb 2020	622.5	35.9	38.5	15.9	10.7
Change on quarter	-3.9	-0.3	-0.3	-0.4	0.3
Change %	-0.6	-0.8	-0.9	-2.4	3.1
Change on year	-9.8	-0.6	-0.8	-0.5	0.1
Change %	-1.5	-1.7	-2.0	-3.1	1.0
Women	YBUU	YBUX	YBVA	YBVD	YBVG
Dec-Feb 2018	409.8	27.0	33.9	16.3	9.1
Dec-Feb 2019	420.6	27.3	34.3	16.3	9.1
Mar-May 2019	426.1	27.5	34.7	16.4	8.8
Jun-Aug 2019	422.7	27.4	34.5	16.3	9.6
Sep-Nov 2019	427.7	27.4	34.4	16.4	8.8
Dec-Feb 2020	429.7	27.3	34.2	16.3	9.0
Change on quarter	2.0	-0.1	-0.2	-0.1	0.2
Change %	0.5	-0.5	-0.4	-0.7	2.3
Change on year	9.1	0.0	-0.1	0.0	0.0
Change %	2.2	0.1	-0.4	0.0	-0.1

Source: Labour Force Survey

Labour market statistics enquiries: labour.market@ons.gsi.gov.uk

1 Main and second job

2 Total actual weekly hours worked including paid and unpaid overtime.

3 Main job only. The split between full-time and part-time employment is based on respondents' self-classification.

7 (1) Usual weekly hours of work¹

United Kingdom, seasonally adjusted

	All in Employment (%)			Employees (%)			Self-Employed (%)		
	People	Men	Women	People	Men	Women	People	Men	Women
Dec-Feb 2019									
Less than 6 Hours	1.4	0.9	1.9	0.9	0.6	1.3	3.2	1.8	6.1
6 up to 15 hours	6.3	3.3	9.5	5.6	2.8	8.5	8.9	4.7	17.6
16 up to 30 hours	20.1	10.4	30.9	19.6	8.9	30.5	23.2	16.8	36.5
31 up to 45 hours	53.9	59.6	47.6	56.7	63.0	50.3	38.8	45.5	24.8
Over 45 hours	18.3	25.8	10.0	17.1	24.7	9.5	25.9	31.2	15.0
Total (thousands)	32,721	17,311	15,409	27,711	13,969	13,742	4,833	3,258	1,575
Sep-Nov 2019									
Less than 6 Hours	1.5	0.9	2.0	1.0	0.7	1.4	3.1	1.7	5.7
6 up to 15 hours	6.3	3.5	9.5	5.7	3.1	8.4	9.1	4.7	17.5
16 up to 30 hours	19.3	9.8	29.9	18.8	8.4	29.3	22.5	15.6	35.9
31 up to 45 hours	54.6	60.4	48.1	57.3	63.7	50.9	39.9	46.7	26.6
Over 45 hours	18.3	25.4	10.4	17.1	24.1	10.0	25.5	31.2	14.4
Total (thousands)	32,901	17,317	15,584	27,711	13,916	13,795	5,001	3,308	1,693
Dec-Feb 2020									
Less than 6 Hours	1.5	1.0	2.0	1.1	0.7	1.4	3.5	2.3	5.8
6 up to 15 hours	6.4	3.4	9.7	5.8	3.0	8.6	8.7	4.0	17.8
16 up to 30 hours	19.0	9.6	29.4	18.5	8.2	28.8	22.3	15.6	35.3
31 up to 45 hours	54.9	61.1	48.1	57.7	64.6	50.8	39.7	46.5	26.5
Over 45 hours	18.1	24.9	10.7	16.9	23.5	10.3	25.8	31.6	14.5
Total (thousands)	33,073	17,345	15,728	27,856	13,942	13,913	5,028	3,313	1,715

1 Total usual weekly hours worked by people aged 16 and over in main job including paid and unpaid overtime.

Source: Labour Force Survey

Labour market statistics enquiries: labour.market@ons.gov.uk

NON-UK WORKERS

8(1) Employment levels and rates by country of birth and nationality

(First published on 18 February 2020)

United Kingdom (thousands of people aged 16 and over) not seasonally adjusted																			
Country of birth	Europe										Africa		Asia			America and Oceania			
	European Union (EU)										Total Africa	Of which: South Africa	Total Asia	Of which: India	Of which: Pakistan and Bangladesh	Total America and Oceania	Of which: USA	Of which: Australia and New Zealand	Total Non-EU ⁷
	Total ¹	UK	Non UK	Total Europe	Total EU (EU27) ²	EU14 ³	EU8 ⁴	EU2 ⁵	Other EU ⁶	Other Europe (not in EU)									
Levels (aged 16 and over)	MGTM	JF6F	JF6G	FSC2	EQ4Q	JJR3	JJR5	EQ4R	FSC3	FSC4	FSC5	JJS3	FSC6	JJS7	JJS9	FSC7	JJR7	JJS5	EQ4S
Oct - Dec 2017	32,230	26,659	5,568	2,617	2,378	995	992	357	34	239	869	171	1,492	465	352	591	99	145	3,190
Oct - Dec 2018	32,671	27,011	5,651	2,550	2,303	989	886	384	43	248	893	174	1,568	476	344	640	107	130	3,349
Jan - Mar 2019	32,641	26,838	5,796	2,666	2,420	994	947	438	41	246	933	200	1,536	452	366	662	108	139	3,376
Apr - Jun 2019	32,752	26,967	5,777	2,692	2,438	1,019	971	407	41	254	923	198	1,504	475	387	658	105	167	3,339
Jul - Sep 2019	32,802	27,028	5,770	2,630	2,368	1,020	953	356	40	261	962	176	1,532	483	373	646	93	166	3,401
Oct - Dec 2019	32,983	27,171	5,809	2,704	2,436	1,026	970	400	40	269	937	171	1,544	490	373	624	95	169	3,373
Change on year	313	160	158	154	133	37	84	16	-3	21	44	-2	-24	13	30	-16	-13	39	25
Change %	1.0	0.6	2.8	6.1	5.8	3.7	9.4	4.2	-8.1	8.6	4.9	-1.4	-1.5	2.8	8.7	-2.5	-11.7	29.9	0.7
Nationality	MGTM	JF6H	JF6I	FSC8	EQ4U	JJR4	JJR6	EQ4V	FSC9	FSCE	FSD2	JJS4	FSD3	JJS8	JJT2	FSD4	JJR8	JJS6	EQ4W
Oct - Dec 2017	32,230	28,726	3,500	2,430	2,335	1,007	959	361	9	95	266	63	508	177	86	296	91	89	1,165
Oct - Dec 2018	32,671	29,098	3,569	2,400	2,274	1,011	869	370	24	126	277	64	593	194	107	299	96	71	1,295
Jan - Mar 2019	32,641	28,943	3,698	2,513	2,381	1,018	925	423	16	132	273	71	597	182	115	315	101	75	1,317
Apr - Jun 2019	32,752	29,084	3,661	2,490	2,368	1,019	952	375	22	122	289	63	567	187	121	314	78	95	1,292
Jul - Sep 2019	32,802	29,209	3,589	2,367	2,238	981	903	333	21	129	297	56	599	210	126	326	68	107	1,351
Oct - Dec 2019	32,983	29,325	3,654	2,439	2,310	994	931	367	17	129	298	68	602	199	126	316	75	107	1,344
Change on year	313	227	85	39	36	-16	62	-2	-8	3	20	4	9	5	19	17	-21	36	49
Change %	1.0	0.8	2.4	1.6	1.6	-1.6	7.2	-0.6	-31.4	2.4	7.3	6.7	1.6	2.5	18.0	5.6	-21.8	51.1	3.8
Rates (aged 16 to 64)	LF9D	LFM6	LFM7	FSD5	EQ4Y	LFM8	LFM9	EQ4Z	FSD6	FSD7	FSD8	LFN4	FSD9	LFN6	LFN7	FSE2	LFN2	LFN5	EQ52
Oct - Dec 2017	75.3	75.8	73.5	80.5	81.6	77.6	85.4	83.6	72.9	70.9	70.9	82.1	63.7	73.5	56.2	78.6	77.3	86.3	68.5
Oct - Dec 2018	76.0	76.3	74.7	81.6	82.6	79.8	86.1	83.5	71.8	73.0	73.3	84.7	65.5	75.5	55.9	77.6	79.1	85.7	70.1
Jan - Mar 2019	75.9	76.3	74.6	81.8	82.8	80.1	85.1	84.6	79.1	72.7	73.1	88.2	64.6	75.3	57.6	77.8	78.4	84.7	69.7
Apr - Jun 2019	76.0	76.3	74.6	82.2	83.1	80.2	85.2	86.2	78.3	74.4	73.2	87.4	63.4	75.5	59.0	78.6	73.9	87.7	69.3
Jul - Sep 2019	76.2	76.3	75.6	82.5	83.3	80.6	86.1	84.6	76.0	76.1	74.9	84.9	65.4	77.0	57.9	79.2	78.2	88.8	71.0
Oct - Dec 2019	76.6	76.8	75.6	82.0	83.1	80.9	85.7	82.7	78.0	73.5	74.2	82.3	65.7	78.7	56.7	80.2	79.1	87.8	70.9
Change on year	0.6	0.5	0.9	0.4	0.5	1.2	-0.4	-0.8	6.1	0.5	0.9	-2.5	0.2	3.2	0.7	2.6	0.0	2.1	0.8
Nationality	LF9D	LFN8	LFN9	FSE3	EQ54	LFO2	LFO3	EQ55	FSE4	FSE5	FSE6	LFO6	FSE7	LFO8	LFO9	FSE8	LFO4	LFO7	EQ56
Oct - Dec 2017	75.3	75.5	74.2	80.3	81.1	77.3	85.3	84.1	38.0	64.7	65.3	84.8	56.1	67.3	52.7	78.2	79.5	84.5	63.3
Oct - Dec 2018	76.0	76.0	75.8	82.6	83.3	81.0	86.0	84.5	68.9	72.3	70.5	86.6	58.3	69.7	48.4	77.0	73.7	86.1	65.6
Jan - Mar 2019	75.9	76.1	75.3	82.1	82.7	79.9	85.0	84.9	75.0	72.9	68.8	91.4	57.2	70.6	50.9	76.9	78.3	82.7	64.8
Apr - Jun 2019	76.0	76.1	75.0	82.5	83.3	80.8	85.0	85.9	83.7	69.5	70.7	90.2	54.3	69.3	53.8	76.8	73.1	86.3	63.4
Jul - Sep 2019	76.2	76.2	76.2	82.5	82.8	80.3	85.5	83.5	83.7	76.3	71.8	87.1	59.4	73.1	55.4	78.1	74.2	92.0	67.2
Oct - Dec 2019	76.6	76.7	76.0	81.9	82.4	80.3	85.4	81.0	80.0	73.4	69.0	85.8	60.3	74.6	55.2	78.5	77.2	87.8	66.9
Change on year	0.6	0.7	0.1	-0.7	-0.8	-0.6	-0.6	-3.6	11.1	1.1	-1.5	-0.9	2.0	4.9	6.8	1.6	3.5	1.7	1.3

Source: Labour Force Survey

Labour market statistics enquiries: labour.market@ons.gov.uk

1. The total series includes people who do not state their country of birth or nationality. The total levels series MGTM does not therefore equal the sum of the "UK" and "Non-UK" series.

2. This series consists of all 27 EU member states excluding the UK. This series equals the sum of EU14, EU8, EU2 and Other EU.

3. Austria, Belgium, Denmark, Finland, France, Germany, Greece, Ireland, Italy, Luxembourg, Netherlands, Portugal, Spain and Sweden.

4. Czech Republic, Estonia, Hungary, Latvia, Lithuania, Poland, Slovak Republic and Slovenia.

5. Romania and Bulgaria.

6. Cyprus, Malta and Croatia.

7. Total Non-EU equals the sum of Other Europe, Total Africa, Total Asia and Total America and Oceania, and excludes the UK.

The estimates shown in this table relate to the number of people in employment and should not be used as a proxy for flows of foreign migrants into the UK.

NON-UK WORKERS

8(2) Unemployment and economic inactivity levels and rates by country of birth and nationality

(first published on 18 February 2020)

United Kingdom (thousands of people) not seasonally adjusted

	Unemployment (all aged 16 and over)					Economically inactive (all aged from 16 to 64)									
	Total ¹	UK	Non-UK	EU27 ²	Non-EU ³	Total ¹		UK		Non-UK		EU27 ²		Non-EU ³	
						All econom- ically inactive	Of which: Students ⁴	All econom- ically inactive	Of which: Students ⁴	All econom- ically inactive	Of which: Students ⁴	All econom- ically inactive	Of which: Students ⁴	All econom- ically inactive	Of which: Students ⁴
Levels (thousands of people)															
By country of birth	MGTP	DSWD	DT35	DT3F	DTKB	LF9L	LF9W	DTLK	DYUP	DYUR	DYVR	DYVZ	DYWL	DYWR	DZ37
Oct - Dec 2017	1,425	1,142	283	78	205	8,751	2,318	7,055	1,807	1,685	511	450	174	1,234	337
Oct - Dec 2018	1,328	1,068	260	78	182	8,598	2,228	6,957	1,757	1,623	470	399	161	1,224	309
Jan - Mar 2019	1,292	1,013	279	84	195	8,663	2,373	6,992	1,851	1,654	521	409	159	1,245	362
Apr - Jun 2019	1,296	1,015	280	74	206	8,659	2,350	7,006	1,864	1,640	485	414	159	1,226	327
Jul - Sep 2019	1,374	1,115	259	72	187	8,503	2,089	6,933	1,687	1,556	401	395	125	1,161	276
Oct - Dec 2019	1,268	1,030	237	85	152	8,450	2,223	6,844	1,769	1,596	455	403	130	1,193	325
Change on year	-60	-37	-23	7	-29	-148	-5	-113	11	-28	-15	4	-31	-31	16
Change %	-4.5	-3.5	-8.7	8.7	-16.2	-1.7	-0.2	-1.6	0.6	-1.7	-3.2	0.9	-19.5	-2.5	5.3
By nationality	MGTP	DSWE	DT39	DTG9	DTKC	LF9L	LF9W	DYTC	DYUQ	DYUS	DYVU	DYWA	DYWM	DYWS	DZGD
Oct - Dec 2017	1,425	1,240	184	90	94	8,751	2,318	7,716	1,946	1,021	371	447	182	574	189
Oct - Dec 2018	1,328	1,154	173	76	97	8,598	2,228	7,630	1,892	954	335	377	165	577	170
Jan - Mar 2019	1,292	1,107	185	86	99	8,663	2,373	7,631	1,982	1,018	390	409	166	609	223
Apr - Jun 2019	1,296	1,110	186	71	114	8,659	2,350	7,621	1,981	1,023	366	399	162	624	204
Jul - Sep 2019	1,374	1,206	168	76	92	8,503	2,089	7,546	1,801	940	287	382	125	558	162
Oct - Dec 2019	1,268	1,102	165	87	79	8,450	2,223	7,456	1,900	976	323	398	143	578	180
Change on year	-60	-52	-8	11	-19	-148	-5	-174	7	22	-12	21	-21	1	9
Change %	-4.5	-4.5	-4.7	14.0	-19.3	-1.7	-0.2	-2.3	0.4	2.3	-3.6	5.7	-13.0	0.2	5.5
Rates (%)															
By country of birth	MGUK	DT2W	DT3B	DTJG	DTKD	CRZK		DYTD		DYUT		DYWD		DYWT	
Oct - Dec 2017	4.2	4.1	4.8	3.2	6.0	21.2		20.9		22.7		15.7		27.1	
Oct - Dec 2018	3.9	3.8	4.4	3.3	5.1	20.8		20.6		21.9		14.6		26.1	
Jan - Mar 2019	3.8	3.6	4.6	3.4	5.5	21.0		20.8		21.8		14.3		26.3	
Apr - Jun 2019	3.8	3.6	4.6	2.9	5.8	21.0		20.8		21.7		14.4		26.3	
Jul - Sep 2019	4.0	4.0	4.3	3.0	5.2	20.6		20.5		20.9		14.1		25.0	
Oct - Dec 2019	3.7	3.7	3.9	3.4	4.3	20.4		20.2		21.3		14.0		25.9	
Change on year	-0.2	-0.1	-0.5	0.1	-0.8	-0.4		-0.4		-0.6		-0.6		-0.3	
By nationality	MGUK	DT2Z	DT3D	DTKA	DTLH	CRZK		DYUO		DYUU		DYWE		DZ36	
Oct - Dec 2017	4.2	4.1	5.0	3.7	7.5	21.2		21.1		21.9		15.7		31.6	
Oct - Dec 2018	3.9	3.8	4.6	3.2	7.0	20.8		20.8		20.5		14.0		29.5	
Jan - Mar 2019	3.8	3.7	4.8	3.5	7.0	21.0		20.9		21.0		14.4		30.3	
Apr - Jun 2019	3.8	3.7	4.8	2.9	8.1	21.0		20.9		21.2		14.2		31.0	
Jul - Sep 2019	4.0	4.0	4.5	3.3	6.4	20.6		20.6		20.2		14.4		28.1	
Oct - Dec 2019	3.7	3.6	4.3	3.6	5.5	20.4		20.4		20.6		14.4		29.1	
Change on year	-0.2	-0.2	-0.3	0.4	-1.5	-0.4		-0.5		0.1		0.5		-0.4	

Source: Labour Force Survey
Labour market statistics enquiries: labour.market@ons.gov.uk

1. The total series includes people who do not state their country of birth or nationality. The total levels series therefore do not equal the sum of the "UK" and "Non-UK" series.
2. This series consists of all 27 EU member states excluding the UK.
3. This series consists of all countries outside the EU excluding the UK.
4. This series consists of those people whose main reason for being economically inactive was because they were students. It does not include all students as some students will be included in the employment and unemployment estimates.

UNEMPLOYMENT

9(1) Unemployment by age and duration

United Kingdom (thousands) seasonally adjusted

		All aged 16 & over							All aged 16 - 64						
People		All	Rate (%) ¹	Up to 6 months	Over 6 and up to 12 months	All over 12 months	% over 12 months	All over 24 months	All	Rate (%) ¹	Up to 6 months	Over 6 and up to 12 months	All over 12 months	% over 12 months	All over 24 months
		1	2	3	4	5	6	7	8	9	10	11	12	13	14
		MGSC	MGSX	YBWF	YBWG	YBWH	YBWI	YBWL	LF2I	LF2Q	LF2Y	LF32	LF34	LF36	LF38
	Dec-Feb 2018	1,419	4.2	839	227	352	24.8	184	1,399	4.3	828	222	349	24.9	183
	Dec-Feb 2019	1,343	3.9	796	200	347	25.8	173	1,323	4.0	786	196	340	25.7	169
	Mar-May 2019	1,292	3.8	766	187	340	26.3	173	1,276	3.9	760	184	332	26.0	168
	Jun-Aug 2019	1,314	3.9	808	173	333	25.3	159	1,297	4.0	804	170	323	24.9	154
	Sep-Nov 2019	1,306	3.8	804	209	293	22.4	160	1,280	3.9	788	205	287	22.4	152
	Dec-Feb 2020	1,364	4.0	842	215	307	22.5	170	1,331	4.0	828	205	298	22.4	160
	Change on quarter	58	0.1	39	6	14	0.1	10	51	0.1	39	0	11	0.0	8
	Change %	4.4		4.8	2.6	4.7		6.5	4.0		5.0	0.2	4.0		5.2
	Change on year	22	0.0	47	15	-40	-3.3	-3	8	0.0	41	9	-42	-3.3	-9
	Change %	1.6		5.9	7.4	-11.5		-1.5	0.6		5.3	4.4	-12.3		-5.2
Men		MGSD	MGSY	MGYK	MGYM	MGYO	YBWJ	YBWM	YBSI	YBTJ	YBWP	YBWS	YBWW	YBWW	YBWB
	Dec-Feb 2018	749	4.2	408	132	209	27.9	119	733	4.3	399	129	205	27.9	119
	Dec-Feb 2019	731	4.1	399	118	215	29.4	114	719	4.2	396	116	208	28.9	111
	Mar-May 2019	712	4.0	395	107	211	29.6	109	704	4.1	391	105	208	29.5	109
	Jun-Aug 2019	727	4.0	419	96	213	29.2	106	716	4.2	418	93	205	28.7	101
	Sep-Nov 2019	729	4.0	434	118	177	24.3	98	713	4.1	423	114	176	24.7	95
	Dec-Feb 2020	763	4.2	470	124	170	22.3	94	740	4.3	460	114	166	22.4	89
	Change on quarter	34	0.2	36	6	-7	-2.0	-4	28	0.1	37	0	-10	-2.3	-6
	Change %	4.6		8.2	4.7	-4.1		-4.5	3.9		8.8	0.3	-5.8		-6.5
	Change on year	32	0.2	71	6	-45	-7.1	-20	21	0.1	65	-2	-42	-6.5	-22
	Change %	4.3		17.8	4.8	-20.9		-17.6	2.9		16.3	-1.6	-20.3		-19.8
Women		MGSE	MGSZ	MGYL	MGYN	MGYP	YBWK	YBWN	LF2J	LF2R	LF2Z	LF33	LF35	LF37	LF39
	Dec-Feb 2018	670	4.2	432	95	143	21.4	65	666	4.3	429	93	144	21.7	64
	Dec-Feb 2019	611	3.8	397	82	132	21.6	59	603	3.9	390	80	132	22.0	58
	Mar-May 2019	580	3.6	371	80	129	22.2	63	573	3.7	368	80	125	21.7	60
	Jun-Aug 2019	586	3.7	389	77	120	20.5	53	581	3.8	386	77	118	20.3	53
	Sep-Nov 2019	577	3.6	370	91	116	20.1	62	567	3.6	365	91	111	19.6	57
	Dec-Feb 2020	601	3.7	373	91	137	22.8	76	591	3.8	367	91	133	22.5	71
	Change on quarter	24	0.1	3	0	21	2.7	15	23	0.1	2	0	22	2.9	14
	Change %	4.2		0.8	0.0	18.2		24.1	4.1		0.5	0.0	19.4		24.5
	Change on year	-10	-0.1	-24	9	5	1.2	18	-12	-0.1	-23	11	0	0.5	13
	Change %	-1.7		-6.1	11.0	3.8		29.7	-2.1		-5.9	13.1	0.2		22.5

		16-17							18-24						
People		All	Rate (%) ¹	Up to 6 months	Over 6 and up to 12 months	All over 12 months	% over 12 months	All over 24 months	All	Rate (%) ¹	Up to 6 months	Over 6 and up to 12 months	All over 12 months	% over 12 months	All over 24 months
		15	16	17	18	19	20	21	22	23	24	25	26	27	28
		YBVH	YBVK	YBXD	YBXG	YBXJ	YBXM	YBXP	YBVN	YBVQ	YBXS	YBXV	YBXY	YBYB	YBYE
	Dec-Feb 2018	127	27.0	102	20	5	4.1	*	396	10.2	270	60	66	16.7	25
	Dec-Feb 2019	88	21.0	69	12	7	8.1	*	404	10.3	276	66	63	15.6	16
	Mar-May 2019	83	19.6	66	11	7	8.1	*	410	10.7	273	67	70	17.0	17
	Jun-Aug 2019	86	20.3	66	14	6	6.5	*	408	10.8	284	47	78	19.1	18
	Sep-Nov 2019	94	21.4	78	13	*	*	*	388	10.2	262	71	55	14.1	17
	Dec-Feb 2020	105	23.8	81	16	8	8.0	*	408	10.5	287	61	60	14.8	21
	Change on quarter	12	2.4	3	3	*	*	*	20	0.3	25	-11	6	0.7	4
	Change %	12.6		4.5	22.1	*	*	*	5.1		9.4	-14.8	10.5		25.6
	Change on year	17	2.8	12	4	1	-0.1	*	4	0.2	11	-5	-3	-0.8	4
	Change %	19.5		16.7	36.8	18.4		*	0.9		4.0	-7.2	-4.3		26.9
Men		YBVI	YBVL	YBXE	YBXH	YBXK	YBXN	YBXQ	YBVO	YBVR	YBXT	YBXW	YBXZ	YBYC	YBYF
	Dec-Feb 2018	61	27.0	48	11	*	*	*	229	11.3	143	41	45	19.5	19
	Dec-Feb 2019	50	23.8	38	7	6	11.4	*	248	12.0	162	43	43	17.3	13
	Mar-May 2019	47	23.0	38	*	*	*	*	249	12.5	156	43	50	20.1	13
	Jun-Aug 2019	50	24.2	38	8	*	*	*	246	12.4	161	30	56	22.7	14
	Sep-Nov 2019	53	25.7	44	7	*	*	*	240	12.0	153	49	38	15.9	9
	Dec-Feb 2020	62	29.4	50	7	5	7.4	*	240	11.8	167	39	34	14.0	9
	Change on quarter	9	3.8	6	0	*	*	*	0	-0.2	15	-10	-4	-1.9	0
	Change %	16.9		14.3	-0.7	*	*	*	0.2		9.6	-20.0	-11.5		1.3
	Change on year	11	5.6	12	0	-1	-4.0	*	-8	-0.2	5	-4	-9	-3.2	-4
	Change %	22.5		33.0	0.3	-20.7		*	-3.2		3.1	-8.9	-21.4		-29.4
Women		YBVJ	YBVM	YBXF	YBXI	YBXL	YBXO	YBXR	YBVP	YBVS	YBXU	YBXX	YBYA	YBYD	YBYG
	Dec-Feb 2018	67	27.0	54	9	*	*	*	167	9.0	126	19	22	12.9	6
	Dec-Feb 2019	38	18.1	32	5	*	*	*	156	8.3	113	22	20	13.0	*
	Mar-May 2019	36	16.4	28	6	*	*	*	160	8.7	117	24	20	12.3	*
	Jun-Aug 2019	36	16.5	28	6	*	*	*	162	9.1	123	17	22	13.6	5
	Sep-Nov 2019	41	17.6	34	6	*	*	*	148	8.2	109	22	17	11.2	8
	Dec-Feb 2020	44	18.7	31	9	*	*	*	168	9.0	119	22	27	15.9	12
	Change on quarter	3	1.2	-3	3	*	*	*	19	0.8	10	-1	10	4.8	4
	Change %	7.1		-8.5	47.4	*	*	*	13.1		9.2	-3.5	61.2		55.1
	Change on year	6	0.6	-1	4	*	*	*	12	0.7	6	-1	6	2.9	*
	Change %	15.7		-2.7	88.0	*	*	*	7.4		5.4	-4.1	31.7		*

Relationship between columns: 1=3+4+5; 8=10+11+12; 15=17+18+19; 22=24+25+26.

¹Denominator = economically active for that age group.

Source: Labour Force Survey

Labour market statistics enquiries: labour.market@ons.gov.uk

UNEMPLOYMENT

9(2) Unemployment by age and duration

United Kingdom (thousands) seasonally adjusted

		25-49							50 and over						
		All	Rate(%) ¹	Up to 6 months	Over 6 and up to 12 months	All over 12 months	% over 12 months	All over 24 months	All	Rate (%) ¹	Up to 6 months	Over 6 and up to 12 months	All over 12 months	% over 12 months	All over 24 months
		1	2	3	4	5	6	7	8	9	10	11	12	13	14
People		MGVI	MGXB	YBYH	YBYK	YBYN	YBYQ	YBYT	YBVT	YBVW	YBYW	YBYZ	YBZC	YBZF	YBZI
	Dec-Feb 2018	602	3.2	329	97	176	29.2	91	294	2.8	138	51	105	35.7	69
	Dec-Feb 2019	561	3.0	322	83	156	27.8	85	289	2.7	128	40	121	41.8	71
	Mar-May 2019	524	2.8	299	68	156	29.8	93	275	2.6	128	41	107	38.7	63
	Jun-Aug 2019	548	2.9	324	69	155	28.2	79	271	2.5	134	43	94	34.8	59
	Sep-Nov 2019	542	2.8	317	86	138	25.6	78	283	2.6	147	39	97	34.3	66
	Dec-Feb 2020	532	2.8	324	81	127	23.9	71	319	2.9	151	57	111	34.7	79
	Change on quarter	-10	-0.1	6	-5	-11	-1.6	-6	36	0.3	4	18	14	0.4	13
	Change %	-1.8		2.0	-6.0	-8.0		-8.2	12.8		2.7	47.4	14.2		20.2
	Change on year	-29	-0.2	1	-2	-28	-3.8	-14	30	0.2	23	18	-10	-7.1	7
	Change %	-5.2		0.4	-2.8	-18.3		-16.2	10.4		17.6	44.1	-8.4		10.1
Men		MGVJ	MGXC	YBYI	YBYL	YBYO	YBYR	YBYU	YBVU	YBVX	YBYX	YBZA	YBZD	YBZG	YBZJ
	Dec-Feb 2018	288	2.9	143	50	95	32.9	53	172	3.1	73	30	68	39.6	47
	Dec-Feb 2019	272	2.7	138	44	89	32.9	58	161	2.8	60	24	77	47.7	42
	Mar-May 2019	266	2.6	140	36	90	33.7	59	150	2.6	61	23	66	44.2	38
	Jun-Aug 2019	272	2.7	147	32	93	34.2	50	159	2.8	73	26	60	37.4	42
	Sep-Nov 2019	276	2.7	157	40	78	28.4	48	160	2.8	80	22	59	36.5	41
	Dec-Feb 2020	273	2.7	167	42	63	23.3	37	188	3.2	85	35	68	36.2	48
	Change on quarter	-3	0.0	10	2	-15	-5.1	-12	28	0.5	5	14	9	-0.4	7
	Change %	-1.2		6.3	4.2	-19.0		-24.4	17.3		5.8	62.9	16.0		17.9
	Change on year	1	0.0	29	-2	-26	-9.6	-21	27	0.4	25	11	-9	-11.6	6
	Change %	0.4		20.9	-4.6	-29.0		-36.5	16.9		40.7	47.9	-11.4		13.0
Women		MGVK	MGXD	YBYJ	YBYM	YBYP	YBYS	YBYV	YBVV	YBVY	YBYV	YBZB	YBZE	YBZH	YBZK
	Dec-Feb 2018	314	3.5	186	46	81	25.8	38	123	2.5	65	21	37	30.2	22
	Dec-Feb 2019	289	3.2	184	39	66	22.9	27	128	2.5	68	16	44	34.4	29
	Mar-May 2019	258	2.9	159	32	67	25.8	35	125	2.5	67	18	40	32.2	25
	Jun-Aug 2019	276	3.1	177	37	62	22.4	29	112	2.2	61	16	35	31.1	18
	Sep-Nov 2019	266	3.0	160	46	60	22.6	29	122	2.4	67	17	38	31.3	25
	Dec-Feb 2020	259	2.9	156	39	64	24.7	35	131	2.5	66	22	43	32.6	31
	Change on quarter	-7	-0.1	-4	-7	4	2.0	5	8	0.1	-1	5	4	1.3	6
	Change %	-2.5		-2.3	-15.1	6.2		18.6	6.9		-0.9	27.6	11.4		23.7
	Change on year	-30	-0.4	-28	0	-3	1.7	7	3	0.0	-2	6	-1	-1.8	2
	Change %	-10.5		-15.0	-0.8	-3.8		26.4	2.2		-2.7	38.4	-3.2		5.9

Relationship between columns: 1=3+4+5; 8=10+11+12.

¹Denominator = economically active for that age group.

Source: Labour Force Survey

Labour market statistics enquiries: labour.market@ons.gov.uk

ECONOMIC ACTIVITY AND INACTIVITY

10 Economic activity by age

United Kingdom (thousands) seasonally adjusted

	All aged 16 & over	16 - 64	16 - 17	18 - 24	25 - 34	35 - 49	50 - 64	65+
	1	2	3	4	5	6	7	8

Economically active

People	MGSF	LF2K	YBZL	YBZO	YBZR	YBZU	LF3A	LFK8
Dec-Feb 2018	33,683	32,463	471	3,870	7,729	11,198	9,195	1,220
Dec-Feb 2019	34,063	32,761	420	3,933	7,812	11,168	9,428	1,302
Mar-May 2019	34,041	32,698	425	3,842	7,818	11,157	9,455	1,343
Jun-Aug 2019	34,006	32,663	423	3,774	7,822	11,142	9,501	1,344
Sep-Nov 2019	34,207	32,857	438	3,809	7,879	11,180	9,552	1,350
Dec-Feb 2020	34,437	33,018	443	3,895	7,893	11,189	9,599	1,419
Change on quarter	230	161	5	86	14	8	48	69
Change %	0.7	0.5	1.2	2.3	0.2	0.1	0.5	5.1
Change on year	374	257	23	-38	81	21	171	117
Change %	1.1	0.8	5.5	-1.0	1.0	0.2	1.8	9.0
Men	MMSG	YBSL	YBZM	YBZP	YBZS	YBZV	YBZY	YCAE
Dec-Feb 2018	17,839	17,084	224	2,017	4,151	5,882	4,811	755
Dec-Feb 2019	18,043	17,252	211	2,061	4,191	5,869	4,919	791
Mar-May 2019	17,993	17,185	202	2,000	4,200	5,870	4,914	807
Jun-Aug 2019	17,984	17,201	206	1,982	4,195	5,877	4,940	782
Sep-Nov 2019	18,046	17,255	205	1,997	4,216	5,869	4,967	790
Dec-Feb 2020	18,108	17,315	210	2,035	4,207	5,866	4,997	794
Change on quarter	63	59	4	37	-9	-3	30	4
Change %	0.3	0.3	2.0	1.9	-0.2	-0.1	0.6	0.4
Change on year	66	63	-2	-27	16	-2	78	3
Change %	0.4	0.4	-0.9	-1.3	0.4	0.0	1.6	0.3
Women	MGSH	LF2L	YBZN	YBZQ	YBZT	YBZW	LF3B	LFK9
Dec-Feb 2018	15,843	15,378	247	1,853	3,578	5,316	4,385	465
Dec-Feb 2019	16,021	15,509	209	1,871	3,621	5,299	4,509	511
Mar-May 2019	16,048	15,512	222	1,842	3,619	5,287	4,542	536
Jun-Aug 2019	16,023	15,462	217	1,793	3,627	5,265	4,560	561
Sep-Nov 2019	16,161	15,602	232	1,811	3,663	5,311	4,585	560
Dec-Feb 2020	16,329	15,703	233	1,860	3,686	5,322	4,602	625
Change on quarter	167	101	1	48	23	11	17	66
Change %	1.0	0.7	0.5	2.7	0.6	0.2	0.4	11.8
Change on year	308	194	25	-12	65	23	93	114
Change %	1.9	1.2	11.9	-0.6	1.8	0.4	2.1	22.3

Economic activity rates (%)¹

People	MGWG	LF22	YCAC	YCAJ	YCAM	YCAP	LF2C	LFL2
Dec-Feb 2018	63.7	78.8	33.5	68.8	86.8	87.5	73.7	10.4
Dec-Feb 2019	64.0	79.3	30.2	70.9	87.3	87.6	74.5	11.0
Mar-May 2019	63.9	79.1	30.5	69.5	87.3	87.6	74.4	11.3
Jun-Aug 2019	63.8	79.0	30.3	68.5	87.3	87.6	74.5	11.2
Sep-Nov 2019	64.1	79.4	31.2	69.4	87.9	87.9	74.7	11.2
Dec-Feb 2020	64.4	79.8	31.3	71.2	88.1	87.9	74.8	11.8
Change on quarter	0.3	0.3	0.2	1.8	0.2	0.1	0.1	0.5
Change on year	0.4	0.4	1.2	0.4	0.8	0.3	0.4	0.8
Men	MGWH	MGSP	YCAH	YCAK	YCAN	YCAQ	MGWQ	MGWT
Dec-Feb 2018	68.9	83.4	31.1	70.2	93.2	93.1	78.5	14.0
Dec-Feb 2019	69.3	84.0	29.7	72.7	93.3	93.3	79.2	14.4
Mar-May 2019	69.0	83.6	28.4	70.8	93.4	93.4	78.8	14.6
Jun-Aug 2019	68.9	83.6	28.9	70.5	93.2	93.5	79.0	14.1
Sep-Nov 2019	69.0	83.8	28.6	71.3	93.6	93.4	79.2	14.2
Dec-Feb 2020	69.2	84.1	29.0	72.9	93.4	93.4	79.4	14.2
Change on quarter	0.1	0.2	0.4	1.6	-0.2	-0.1	0.2	0.0
Change on year	-0.2	0.1	-0.7	0.1	0.0	0.1	0.2	-0.2
Women	MGWI	LF23	YCAI	YCAL	YCAO	YCAR	LF2D	LFL3
Dec-Feb 2018	58.6	74.2	36.0	67.3	80.4	82.0	69.0	7.4
Dec-Feb 2019	59.0	74.7	30.7	68.9	81.2	82.1	69.9	8.0
Mar-May 2019	59.0	74.7	32.7	68.1	81.1	82.0	70.2	8.4
Jun-Aug 2019	58.9	74.4	31.9	66.5	81.3	81.7	70.2	8.7
Sep-Nov 2019	59.3	75.1	33.9	67.4	82.2	82.5	70.4	8.7
Dec-Feb 2020	59.9	75.5	33.9	69.5	82.8	82.7	70.4	9.6
Change on quarter	0.5	0.4	-0.1	2.1	0.6	0.2	0.0	1.0
Change on year	0.9	0.8	3.2	0.6	1.6	0.6	0.5	1.7

Relationship between columns: 1= 2+8; 2=3+4+5+6+7.

¹Denominator = all persons in the relevant age group.

Data source: Labour Force Survey

Labour market statistics enquiries: labour.market@ons.gov.uk

ECONOMIC ACTIVITY AND INACTIVITY

11 Economic inactivity: reasons

United Kingdom (thousands) seasonally adjusted

	Economic inactivity by reason (aged 16 to 64)									
	Total aged 16-64									Wanting/not wanting a job (aged 16 to 64)
		Student	Looking after family / home	Temp sick	Long-term sick	Discouraged workers	Retired	Other	Does not want job	Wants a job ¹
	1	2	3	4	5	6	7	8	9	10
People	LF2M	LF63	LF65	LF67	LF69	LFL8	LF6B	LF6D	LFL9	LFM2
May-Jul 2019	8,587	2,241	1,999	164	2,048	40	1,101	995	6,712	1,875
Jun-Aug 2019	8,676	2,316	1,980	169	2,069	39	1,120	982	6,792	1,884
Jul-Sep 2019	8,616	2,295	1,970	171	2,054	34	1,117	974	6,760	1,856
Aug-Oct 2019	8,606	2,280	1,966	174	2,072	32	1,117	965	6,767	1,839
Sep-Nov 2019	8,506	2,263	1,934	161	2,065	30	1,114	939	6,646	1,859
Oct-Dec 2019	8,478	2,255	1,885	160	2,075	33	1,123	947	6,605	1,873
Nov-Jan 2020	8,431	2,186	1,868	178	2,120	31	1,111	937	6,560	1,871
Dec-Feb 2020	8,370	2,130	1,840	177	2,112	35	1,122	954	6,522	1,848
Change on quarter	-136	-133	-94	16	47	5	8	15	-124	-11
Change %	-1.6	-5.9	-4.9	9.6	2.3	16.8	0.7	1.6	-1.9	-0.6
Change on year	-166	-97	-168	-13	134	3	11	-36	-185	18
Change %	-1.9	-4.4	-8.4	-6.8	6.8	8.8	1.0	-3.6	-2.8	1.0
Men	YBSO	BEEX	BEAQ	BEDI	BEDL	YCFP	BEDR	BEDU	YBWA	YBWD
Dec-Feb 2018	3,403	1,190	247	96	953	21	473	423	2,544	858
Dec-Feb 2019	3,290	1,122	212	94	939	22	491	409	2,557	733
Mar-May 2019	3,368	1,168	224	86	948	20	500	422	2,618	751
Jun-Aug 2019	3,366	1,160	227	73	962	24	508	411	2,598	768
Sep-Nov 2019	3,326	1,147	232	66	961	17	504	399	2,558	767
Dec-Feb 2020	3,281	1,076	226	80	973	24	495	406	2,505	776
Change on quarter	-45	-70	-6	14	13	6	-9	7	-53	8
Change %	-1.3	-6.1	-2.6	21.4	1.3	36.8	-1.7	1.7	-2.1	1.1
Change on year	-9	-46	14	-14	34	2	4	-3	-51	42
Change %	-0.3	-4.1	6.4	-15.0	3.7	7.2	0.8	-0.7	-2.0	5.7
Women	LF2N	LF64	LF66	LF68	LF6A	LFM3	LF6C	LF6E	LFM4	LFM5
Dec-Feb 2018	5,347	1,159	1,823	106	1,030	17	682	529	4,143	1,203
Dec-Feb 2019	5,246	1,105	1,796	95	1,039	10	620	580	4,150	1,096
Mar-May 2019	5,251	1,122	1,790	78	1,069	11	619	562	4,158	1,093
Jun-Aug 2019	5,310	1,156	1,753	95	1,107	15	612	571	4,194	1,116
Sep-Nov 2019	5,180	1,116	1,702	95	1,104	13	610	539	4,088	1,092
Dec-Feb 2020	5,089	1,054	1,614	96	1,139	11	627	547	4,017	1,072
Change on quarter	-91	-63	-88	1	35	-1	17	8	-71	-20
Change %	-1.8	-5.6	-5.2	1.4	3.1	-10.4	2.8	1.5	-1.7	-1.8
Change on year	-157	-51	-182	1	99	1	7	-33	-133	-24
Change %	-3.0	-4.7	-10.1	1.4	9.6	12.2	1.1	-5.7	-3.2	-2.2
Percentage of economically inactive aged from 16 to 64 (%)										
People	LF6V	LF6X	LF6Z	LF73	LF75	LF77	LF79	LF7B	LF7D	LF7F
Dec-Feb 2018	100	26.8	23.7	2.3	22.7	0.4	13.2	10.9	76.4	23.6
Dec-Feb 2019	100	26.1	23.5	2.2	23.2	0.4	13.0	11.6	78.6	21.4
Mar-May 2019	100	26.6	23.4	1.9	23.4	0.4	13.0	11.4	78.6	21.4
Jun-Aug 2019	100	26.7	22.8	1.9	23.8	0.5	12.9	11.3	78.3	21.7
Sep-Nov 2019	100	26.6	22.7	1.9	24.3	0.4	13.1	11.0	78.1	21.9
Dec-Feb 2020	100	25.5	22.0	2.1	25.2	0.4	13.4	11.4	77.9	22.1
Men	BEBP	BEEH	BEEK	BEEN	BEEQ	BEET	BEEW	BEEZ	BEAS	BEGT
Dec-Feb 2018	100	35.0	7.2	2.8	28.0	0.6	13.9	12.4	74.8	25.2
Dec-Feb 2019	100	34.1	6.4	2.9	28.5	0.7	14.9	12.4	77.7	22.3
Mar-May 2019	100	34.7	6.6	2.6	28.1	0.6	14.9	12.5	77.7	22.3
Jun-Aug 2019	100	34.5	6.7	2.2	28.6	0.7	15.1	12.2	77.2	22.8
Sep-Nov 2019	100	34.5	7.0	2.0	28.9	0.5	15.1	12.0	76.9	23.1
Dec-Feb 2020	100	32.8	6.9	2.4	29.7	0.7	15.1	12.4	76.4	23.6
Women	LF6W	LF6Y	LF72	LF74	LF76	LF78	LF7A	LF7C	LF7E	LF7G
Dec-Feb 2018	100	21.7	34.1	2.0	19.3	0.3	12.8	9.9	77.5	22.5
Dec-Feb 2019	100	21.1	34.2	1.8	19.8	0.2	11.8	11.1	79.1	20.9
Mar-May 2019	100	21.4	34.1	1.5	20.4	0.2	11.8	10.7	79.2	20.8
Jun-Aug 2019	100	21.8	33.0	1.8	20.8	0.3	11.5	10.8	79.0	21.0
Sep-Nov 2019	100	21.6	32.9	1.8	21.3	0.2	11.8	10.4	78.9	21.1
Dec-Feb 2020	100	20.7	31.7	1.9	22.4	0.2	12.3	10.8	78.9	21.1

Relationship between columns : 1=2+3+4+5+6+7+8; 1=9+10.

Data Source: Labour Force Survey.

Labour market statistics enquiries: labour.market@ons.gov.uk

1. This series comprises those who say they would like a regular paid job, but who do not meet the internationally agreed definition of unemployment because they have not been looking for work in the last four weeks and/or they were unable to start working within two weeks.

ECONOMIC ACTIVITY AND INACTIVITY

12 Educational status, economic activity and inactivity of people aged from 16 to 24

December - February 2020

United Kingdom (thousands) seasonally adjusted

	All aged 16 to 24				In full-time education (FTE)				Not in full-time education (FTE) ¹			
	Total	Employed	Unemployed	Economically inactive	Total	Employed ²	Unemployed ²	Economically inactive	Total	Employed	Unemployed	Economically inactive
	1	2	3	4	5	6	7	8	9	10	11	12
Levels												
People												
16-17	1,413	338	105	970	1,225	266	68	890	189	71	37	80
18-24	5,469	3,487	408	1,574	1,763	664	88	1,011	3,706	2,823	320	563
16-24	6,882	3,824	513	2,544	2,987	930	156	1,901	3,894	2,894	358	643
Men												
16-17	724	148	62	514	614	107	37	471	110	41	25	43
18-24	2,792	1,795	240	758	830	279	42	509	1,962	1,515	198	249
16-24	3,516	1,942	302	1,272	1,445	386	79	980	2,072	1,556	223	292
Women												
16-17	689	190	44	456	610	160	31	419	79	30	12	37
18-24	2,676	1,692	168	816	932	385	46	502	1,744	1,307	122	314
16-24	3,366	1,882	211	1,272	1,543	544	77	921	1,823	1,337	135	351
Changes on quarter												
People												
16-17	9	-7	12	4	28	12	8	8	-19	-19	4	-4
18-24	-20	66	20	-106	-56	50	16	-122	36	16	4	16
16-24	-11	59	32	-102	-29	62	24	-114	18	-2	8	12
Men												
16-17	5	-5	9	1	15	4	8	3	-11	-9	1	-2
18-24	-10	37	0	-48	-41	18	7	-66	30	19	-7	18
16-24	-6	32	9	-47	-26	22	15	-63	20	11	-6	15
Women												
16-17	5	-2	3	4	13	8	-1	5	-8	-10	4	-2
18-24	-10	29	19	-58	-16	32	9	-57	6	-3	11	-2
16-24	-5	27	22	-55	-3	40	8	-51	-2	-13	14	-3
Rates(%)³												
People												
16-17		23.9	23.8	68.7		21.8	20.3	72.7		37.7	34.5	42.5
18-24		63.8	10.5	28.8		37.7	11.7	57.4		76.2	10.2	15.2
16-24		55.6	11.8	37.0		31.1	14.3	63.6		74.3	11.0	16.5
Men												
16-17		20.4	29.4	71.0		17.4	25.6	76.7		37.6	37.7	39.6
18-24		64.3	11.8	27.1		33.6	13.1	61.3		77.2	11.6	12.7
16-24		55.2	13.5	36.2		26.7	17.0	67.8		75.1	12.5	14.1
Women												
16-17		27.5	18.7	66.1		26.2	16.4	68.7		37.8	29.4	46.4
18-24		63.2	9.0	30.5		41.3	10.6	53.9		75.0	8.5	18.0
16-24		55.9	10.1	37.8		35.3	12.4	59.7		73.4	9.1	19.3
Changes on quarter												
People												
16-17		-0.6	2.4	-0.2		0.5	1.1	-1.0		-5.7	7.5	1.8
18-24		1.4	0.3	-1.8		3.9	1.2	-4.9		-0.3	0.1	0.3
16-24		0.9	0.5	-1.4		2.3	1.1	-3.2		-0.4	0.2	0.2
Men												
16-17		-0.8	3.8	-0.4		0.2	3.9	-1.5		-4.0	5.0	1.5
18-24		1.6	-0.2	-1.6		3.6	1.3	-4.7		-0.2	-0.5	0.7
16-24		1.0	0.2	-1.3		1.9	2.1	-3.1		-0.2	-0.4	0.6
Women												
16-17		-0.5	1.2	0.1		0.8	-1.1	-0.6		-8.0	11.3	2.3
18-24		1.3	0.8	-2.1		4.1	1.1	-5.1		-0.4	0.7	-0.2
16-24		0.9	0.8	-1.6		2.7	0.4	-3.2		-0.6	1.0	-0.2

Relationship between columns: 1=5+9; 2=6+10; 3=7+11.

Source: Labour Force Survey

Labour market statistics enquiries: labour.market@ons.gov.uk

1. Not in full-time education includes people in part-time education and/or some form of training. Estimates of the number of young people who were not in employment, education or training ("NEET") cannot therefore be derived from this table. Estimates of young people who were NEET are published separately at:

<https://www.ons.gov.uk/employmentandlabourmarket/peopleinwork/unemployment/bulletins/youngpeoplenotineducationemploymentortrainingneet/latest>

2. People in full-time education are employed if they have a part-time job or unemployed if they are looking for part-time employment.

3. Denominator = all persons in the relevant age group for economically active, total in employment and economically inactive; economically active for unemployment.

EARNINGS

13 Average Weekly Earnings (nominal) - total pay¹

Standard Industrial Classification (2007)

Great Britain, seasonally adjusted

	Whole Economy (100%) ²			Private sector (82%) ²			Public sector (18%) ²		
	Weekly Earnings (£)	% changes year on year		Weekly Earnings (£)	% changes year on year		Weekly Earnings (£)	% changes year on year	
		Single month	3 month average ³		Single month	3 month average ³		Single month	3 month average ³
	KAB9	KAC2	KAC3	KAC4	KAC5	KAC6	KAC7	KAC8	KAC9
Feb 18	513	2.6	2.8	511	2.6	3.0	521	2.6	2.3
Dec 18	529	3.3	3.6	528	3.4 (r)	3.8	532	2.8	2.8
Jan 19 (r)	529	3.7	3.4	528	3.8	3.5	533	2.8	2.8
Feb 19 (r)	531	3.6	3.5	531	3.9	3.7	532	2.3	2.6
Mar 19	531	2.4	3.2	528	2.3	3.3	534	2.6	2.5 (r)
Apr 19	534	4.1	3.4 (r)	533	4.0	3.4 (r)	544	4.5	3.1
May 19	536	4.0	3.5	535	4.0	3.4	543	3.9	3.6
Jun 19	538	3.8	4.0	537	3.8	4.0	544	3.8	4.0
Jul 19	539	3.9	3.9	539	3.9	3.9	546	3.7	3.8
Aug 19	540	3.3	3.7	539	3.5	3.7	544	2.8	3.4
Sep 19	542	3.8	3.7	541	3.9	3.7	546	3.5	3.3
Oct 19	543	2.4	3.2	541	2.2	3.2	547	3.2	3.1
Nov 19	544	3.4	3.2	543	3.4	3.2	548	3.3	3.3
Dec 19	544	2.8	2.9	542 (r)	2.7	2.8	549	3.3	3.3
Jan 20 (r)	546	3.1	3.1	545	3.2	3.1	549	3.0	3.2
Feb 20 (p)	545	2.5	2.8	543	2.3	2.7	551	3.5	3.3
	Services, SIC 2007 sections G-S (85%) ²			Finance and business services, SIC 2007 sections K-N (22%) ²			Public sector excluding financial services (17%) ²		
	Weekly Earnings (£)	% changes year on year		Weekly Earnings (£)	% changes year on year		Weekly Earnings (£)	% changes year on year	
		Single month	3 month average ³		Single month	3 month average ³		Single month	3 month average ³
	K5BZ	K5C2	K5C3	K5C4	K5C5	K5C6	KAD8	KAD9	KAE2
Feb 18	497	2.8	2.9	654	3.6	3.6	517	2.6	2.3
Dec 18	513	3.4	3.8	675 (r)	3.2	3.9	527	2.9	2.8
Jan 19 (r)	513	3.9	3.6	681	4.8	4.0	529	2.8	2.9
Feb 19 (r)	515	3.7	3.7	678	3.6	3.9	528	2.2	2.6
Mar 19	516	2.5	3.4	675	2.1	3.5	529	2.4	2.5
Apr 19	518	4.1	3.5 (r)	686	5.1	3.6 (r)	540	4.4	3.0
May 19	520	4.0	3.6	689	5.4	4.2	539	3.9	3.6
Jun 19	522	3.9	4.0	690	5.0	5.1	538	3.5	3.9
Jul 19	523	3.9	4.0	692	4.0	4.8	543	3.8	3.7
Aug 19	524	3.3	3.7	694	4.4	4.4	539	2.7	3.3
Sep 19	526	3.8	3.7	699	5.1	4.5	542	3.5	3.4
Oct 19	527	2.2	3.1	699	3.4	4.3	543	3.2	3.2
Nov 19	528	3.5	3.2	702	4.0	4.2	545	3.4	3.4
Dec 19	528	2.9 (r)	2.9	700	3.6	3.7	545	3.4	3.3
Jan 20 (r)	530	3.3	3.2	703	3.3	3.6	545	3.1	3.3
Feb 20 (p)	529	2.7	3.0	693	2.3	3.0	547	3.6	3.4
	Manufacturing, SIC 2007 section C (8%) ²			Construction, SIC 2007 section F (5%) ²			Wholesaling, retailing, hotels & restaurants, SIC 2007 sections G & I (23%) ²		
	Weekly Earnings (£)	% changes year on year		Weekly Earnings (£)	% changes year on year		Weekly Earnings (£)	% changes year on year	
		Single month	3 month average ³		Single month	3 month average ³		Single month	3 month average ³
	K5CA	K5CB	K5CC	K5CD	K5CE	K5CF	K5CG	K5CH	K5CI
Feb 18	596	2.3	2.8	604	3.0	3.4	349	2.5	2.3
Dec 18 (r)	606	1.7	1.6	637	5.7	4.4	358	2.7	3.0
Jan 19 (r)	610	2.4	1.8	631	3.6	4.5	356	2.8	2.5
Feb 19 (r)	608	2.0	2.0	637	5.5	4.9	358	2.6	2.7
Mar 19	605	0.9	1.8 (r)	632	3.0	4.0	350	-0.3	1.7 (r)
Apr 19	615	2.4	1.8	653	6.7	5.1 (r)	356	1.5	1.3 (r)
May 19	613	2.5	1.9	648	6.2	5.3	363	1.5	0.9
Jun 19	615	2.8	2.6	648	5.4	6.1	363	3.9	2.3
Jul 19	616	2.2	2.5	652	7.3	6.3	364	2.9	2.7
Aug 19	620	3.2	2.8	649	4.7	5.8	365	2.6	3.1
Sep 19	618	2.4	2.6	658	6.1	6.0	366	3.6	3.0
Oct 19	621	2.7	2.8	650	4.1	5.0	362	0.5	2.2
Nov 19	622	3.0	2.7	649	3.4	4.5	362	1.6	1.9
Dec 19	620	2.3	2.7	649 (r)	1.9	3.1	362	1.2	1.1
Jan 20 (r)	620	1.5	2.3	655	3.8	3.0	370	3.8	2.2
Feb 20 (p)	621	2.2	2.0	652	2.4	2.7	363	1.3	2.1

Source: Monthly Wages & Salaries Survey

Earnings enquiries: 01633 456120

Email: earnings@ons.gov.uk

1. Estimates of total pay include bonuses but exclude arrears of pay.

2. The figure in brackets is the percentage of whole economy employment in that sector or industry for the latest time period.

3. The three month average figures are the changes in the average seasonally adjusted values for the three months ending with the relevant month compared with the same period a year earlier.

EARNINGS

14 Average Weekly Earnings (nominal) - bonus pay

Standard Industrial Classification (2007)

Great Britain, seasonally adjusted

Whole Economy (100%) ¹				Private sector (82%) ²			Public sector (18%) ²		
	Weekly Earnings (£)	% changes year on year		Weekly Earnings (£)	% changes year on year		Weekly Earnings (£)	% changes year on year	
		Single month	3 month average ²		Single month	3 month average ²		Single month	3 month average ²
	KAF4	KAF5	KAF6	KAF7	KAF8	KAF9	KAG2	KAG3	KAG4
Feb 18	31	-0.2	4.4	37	-0.1	4.3	2	1.4	-11.1
Dec 18 (r)	33	2.8	8.3	40	2.9	8.5	2	-26.5	-27.2
Jan 19 (r)	32	4.3	2.1	38	4.1	2.1	3	61.9	-19.5
Feb 19 (r)	32	6.4	4.5	39	6.5	4.5	2	11.0	10.3
Mar 19	32	-0.3	3.4 (r)	37	-4.4	1.9 (r)	3	113.3	53.6 (r)
Apr 19	32	1.6	2.5 (r)	39	4.8	2.1 (r)	2	10.2	33.6 (r)
May 19	33	8.0	3.0	40	7.7	2.5	2	21.8	38.0
Jun 19	32	2.0	3.9	39	0.1	4.1	2	25.6	18.8
Jul 19	33	5.9	5.3	40	4.1	3.9	4	60.9	37.6
Aug 19	32	-1.8	2.0	39	0.2	1.4	1	-58.3	-1.3
Sep 19	34	9.1	4.3	41	8.9	4.3	2	31.6	-2.7
Oct 19	32	-16.0	-3.9	39	-15.7	-3.1	2	-38.8	-35.8
Nov 19	34	7.4	-1.0	41	7.5	-0.8	2	1.1	-10.4
Dec 19 (r)	32	-2.8	-4.6	38	-2.9	-4.5	2	-2.9	-16.4
Jan 20 (r)	35	8.0	4.1	41	8.3	4.2	3	25.8	10.3
Feb 20 (p)	32	-0.9	1.3	39	-0.9	1.4	2	9.8	13.0

Services, SIC 2007 sections G-S (85%) ¹				Finance and business services, SIC 2007 sections K-N (22%) ²			Public sector excluding financial services (17%) ²		
	Weekly Earnings (£)	% changes year on year		Weekly Earnings (£)	% changes year on year		Weekly Earnings (£)	% changes year on year	
		Single month	3 month average ²		Single month	3 month average ²		Single month	3 month average ²
	K5CS	K5CT	K5CU	K5CV	K5CW	K5CX	KAH3	KAH4	KAH5
Feb 18	31	0.7	5.7	75	5.5	9.7	1	-1.4	-10.1
Dec 18 (r)	34	0.8	9.0	79	-2.4	11.5	1	-17.9	-25.4
Jan 19 (r)	33	6.5	2.3	79	5.1	5.4	2	62.6	-18.1
Feb 19 (r)	33	6.5	4.5	79	5.4	2.6	2	28.4	19.6
Mar 19	32	-3.7	3.0 (r)	77	1.3	3.9 (r)	2	117.9	66.8 (r)
Apr 19	32	2.8	1.8 (r)	78	1.2	2.6 (r)	1	11.3	46.9 (r)
May 19	34	7.4	2.1	81	21.1	7.3	2	23.8	45.3
Jun 19	33	3.0	4.4	80	2.7	7.7	1	-20.0	5.4
Jul 19	34	4.0	4.8	81	-0.5	7.0	2	54.5	22.6
Aug 19	33	-2.0	1.6	80	1.1	1.1	1	-57.0	-12.1
Sep 19	35	9.7	3.8	86	11.6	4.0	1	25.4	-2.6
Oct 19	33	-18.3	-4.7	82	-12.3	-0.7	1	-37.8	-34.3
Nov 19	35	8.1	-1.6	85	2.7	-0.1	1	-0.5	-10.7
Dec 19 (r)	33	-3.2	-5.5	79	1.0	-3.3	1	5.9	-13.7
Jan 20 (r)	36	8.9	4.5	85	7.5	3.7	2	9.8	5.3
Feb 20 (p)	33	-1.9	1.3	78	-0.9	2.5	2	14.6	10.5

Manufacturing, SIC 2007 section C (8%) ²				Construction, SIC 2007 section F (5%) ¹			Wholesaling, retailing, hotels & restaurants, SIC 2007 sections G & I (23%) ²		
	Weekly Earnings (£)	% changes year on year		Weekly Earnings (£)	% changes year on year		Weekly Earnings (£)	% changes year on year	
		Single month	3 month average ²		Single month	3 month average ²		Single month	3 month average ²
	K5D3	K5D4	K5D5	K5D6	K5D7	K5D8	K5D9	K5DA	K5DB
Feb 18	25	-13.0	-0.5	24	-16.8	-6.4	22	0.4	0.3
Dec 18 (r)	26	4.1	-7.9	30	39.5	9.7	22	-3.4	-3.5
Jan 19 (r)	26	2.6	-3.8	25	-5.4	6.8	21	-3.2	-7.6
Feb 19 (r)	23	-8.4	-0.6	29	19.4	16.4	23	4.0	-0.8
Mar 19	24	-6.9	-4.3 (r)	30	-3.5	2.7 (r)	19	-21.8	-7.4 (r)
Apr 19	27	3.2	-4.0 (r)	35	57.6	21.3 (r)	20	-11.2	-9.9 (r)
May 19	26	-3.7	-2.5	31	33.0	25.5	25	-13.5	-15.4
Jun 19	27	12.4	3.7	28	14.8	34.5	22	13.2	-5.4
Jul 19	25	-1.7	2.0	31	51.4	32.0	20	-4.5	-3.2
Aug 19	27	14.6	8.1	27	-21.4	8.4	22	2.1	3.4
Sep 19	24	-4.2	2.6	32	15.6	9.0	22	6.3	1.3
Oct 19	26	2.2	4.0	28	-12.0	-7.3	22	-13.2	-2.3
Nov 19	25	7.5	1.7	29	6.5	2.7	22	0.8	-2.6
Dec 19 (r)	25	-5.4	1.2	30	-0.5	-2.5	22	-2.1	-5.2
Jan 20 (r)	25	-3.9	-0.9	35	41.1	14.4	25	20.0	6.0
Feb 20 (p)	25	9.4	-0.3	33	12.9	16.5	21	-11.1	1.7

Source: Monthly Wages & Salaries Survey

Earnings enquiries: 01633 456120

Email: earnings@ons.gov.uk

1. The figure in brackets is the percentage of whole economy employment in that sector or industry for the latest time period.

2. The three month average figures are the changes in the average seasonally adjusted values for the three months ending with the relevant month compared with the same period a year earlier.

EARNINGS

15 Average Weekly Earnings (nominal) - regular pay¹

Standard Industrial Classification (2007)

Great Britain, seasonally adjusted

	Whole Economy (100%) ²			Private sector (82%) ²			Public sector (18%) ²		
	Weekly Earnings (£)	% changes year on year		Weekly Earnings (£)	% changes year on year		Weekly Earnings (£)	% changes year on year	
		Single month	3 month average ³		Single month	3 month average ³		Single month	3 month average ³
	KAI7	KAI8	KAI9	KAJ2	KAJ3	KAJ4	KAJ5	KAJ6	KAJ7
Feb 18	482	2.9	2.8	474	3.0	2.9	519	2.6	2.3
Dec 18	495 (r)	3.3	3.4	488	3.4	3.5	530	2.8	2.8
Jan 19	498	3.6	3.5	491	3.9	3.6	531	2.8	2.9
Feb 19	497 (r)	3.3	3.4	491	3.5	3.6	531	2.2	2.6
Mar 19	498	3.1	3.3	491	3.3	3.6	531	2.3	2.4
Apr 19	503	4.0	3.4	494	3.9	3.6	542	4.4	3.0 (r)
May 19	504	3.8	3.6	496	3.8	3.7	539	3.8	3.5
Jun 19	506	4.0	3.9	498	4.1	4.0	540	3.5	3.9
Jul 19	507	3.8	3.9	500	3.9	4.0	541	3.1	3.5
Aug 19	508	3.6	3.8	501	3.6	3.9	542	3.2	3.3
Sep 19	509	3.6	3.6	501	3.6	3.7	544	3.4	3.2
Oct 19	510	3.2	3.5	502	3.2	3.5	546	3.3	3.3
Nov 19	510	3.2	3.4	503	3.2	3.3	547	3.4	3.4
Dec 19	511	3.2	3.2	504	3.2	3.2	548	3.3	3.4
Jan 20	511 (r)	2.8	3.1	504	2.7	3.0	547	3.0	3.2
Feb 20	511 (p)	2.8	2.9	504	2.6	2.8	548	3.3	3.2
	Services, SIC 2007 sections G-S (85%) ²			Finance and business services, SIC 2007 sections K-N (22%) ²			Public sector excluding financial services (17%) ²		
	Weekly Earnings (£)	% changes year on year		Weekly Earnings (£)	% changes year on year		Weekly Earnings (£)	% changes year on year	
		Single month	3 month average ³		Single month	3 month average ³		Single month	3 month average ³
	K5DL	K5DM	K5DN	K5DO	K5DP	K5DQ	KAK6	KAK7	KAK8
Feb 18	465	2.9	2.7	581	3.2	2.6	516	2.6	2.4
Dec 18	479	3.5	3.6	596	3.8	3.6	526	2.8	2.9
Jan 19	481 (r)	3.8	3.6	602	4.8	4.1	528	2.9	2.9
Feb 19	481 (r)	3.3	3.5	600	3.4	4.0	527	2.2	2.6
Mar 19	482	3.2	3.4	604	4.1	4.1	528	2.4	2.5
Apr 19	486	4.1	3.5	605	4.5	4.0	538	4.3	3.0
May 19	487	3.9	3.7	606	4.3	4.3	536	3.9	3.5
Jun 19	489	4.2	4.1	613	5.2	4.7	537	3.6	3.9
Jul 19	491	3.8	4.0	611	4.2	4.6	538	3.2	3.6
Aug 19	491	3.5	3.8	613	4.6	4.7	539	3.3	3.3
Sep 19	492	3.6	3.7	616	4.7	4.5	541	3.4	3.3
Oct 19	493	3.2	3.5	619	4.5	4.6	542	3.4	3.4
Nov 19	494	3.3	3.4	618	4.0	4.4	544	3.4	3.4
Dec 19	495	3.4	3.3	619	3.9	4.2	544	3.4	3.4
Jan 20	495 (r)	3.0	3.2	617	2.5	3.5	544	3.1	3.3
Feb 20	495 (p)	3.0	3.1	618	3.0	3.1	545	3.4	3.3
	Manufacturing, SIC 2007 section C (8%) ²			Construction, SIC 2007 section F (5%) ²			Wholesaling, retailing, hotels & restaurants, SIC 2007 sections G & I (23%) ²		
	Weekly Earnings (£)	% changes year on year		Weekly Earnings (£)	% changes year on year		Weekly Earnings (£)	% changes year on year	
		Single month	3 month average ³		Single month	3 month average ³		Single month	3 month average ³
	K5DU	K5DV	K5DW	K5DX	K5DY	K5DZ	K5E2	K5E3	K5E4
Feb 18	572	2.8	2.9	578	3.8	4.1	326	2.7	2.4
Dec 18	580 (r)	1.5	1.9	606	3.9	3.9	336	3.1	3.4
Jan 19	584 (r)	2.3	1.9	603	4.0	4.2	335	3.1	3.1
Feb 19	585 (r)	2.3	2.0	607	5.0	4.3	335	2.7	2.9
Mar 19	585 (r)	2.2	2.2	604	3.2	4.1	334	2.0	2.6
Apr 19	586	2.4	2.3	616	5.2 (r)	4.5	337	3.0	2.5
May 19	587	2.7	2.4	620	5.2	4.5	339	3.0	2.7
Jun 19	588	2.3	2.5	621	5.2	5.2	341	3.4	3.1
Jul 19	589	2.4	2.5	621	5.7	5.4	342	3.3	3.2
Aug 19	593	3.0	2.6	623	5.6	5.5	343	2.7	3.1
Sep 19	593	2.5	2.7	622	5.4	5.6	343	3.5	3.1
Oct 19	595	2.7	2.8	621	5.1	5.4	339	1.4	2.5
Nov 19	597	2.9	2.7	620	3.3	4.6	340	1.6	2.2
Dec 19	596 (r)	2.8	2.8	618	2.0	3.5	340	1.4	1.5
Jan 20	594 (r)	1.7	2.4	620	2.7	2.7	344	2.9	2.0
Feb 20	596 (p)	1.9	2.1	619	2.0	2.2	342	2.3	2.2

Source: Monthly Wages & Salaries Survey

Earnings enquiries: 01633 456120

Email: earnings@ons.gov.uk

1. Estimates of regular pay exclude bonuses and arrears of pay.

2. The figure in brackets is the percentage of whole economy employment in that sector or industry for the latest time period.

3. The three month average figures are the changes in the average seasonally adjusted values for the three months ending with the relevant month compared with the same period a year earlier.

EARNINGS

16 Average Weekly Earnings - real and nominal¹

Great Britain whole economy, seasonally adjusted

Total pay (including bonuses) ¹						
	Nominal earnings			Real earnings ³		
	Nominal Weekly Earnings (£)	% changes year on year		Weekly Earnings at constant 2015 prices (£)	% changes year on year	
		Single month	3 month average ²		Single month	3 month average ²
	KAB9	KAC2	KAC3	A3WX	A3WV	A3WW
Feb 18	513	2.6	2.8	489	0.1	0.2
Dec 18	529	3.3	3.6	495	1.2 (r)	1.4
Jan 19 (r)	529	3.7	3.4	496	1.9	1.4
Feb 19 (r)	531	3.6	3.5	497	1.7	1.6
Mar 19	531	2.4	3.2	496	0.5	1.4
Apr 19	534	4.1	3.4 (r)	498	2.1	1.4
May 19	536	4.0	3.5	499	2.1	1.5
Jun 19	538	3.8	4.0	500	1.8	2.0
Jul 19	539	3.9	3.9	501	1.9	1.9
Aug 19	540	3.3	3.7	501	1.6	1.8
Sep 19	542	3.8	3.7	502	2.1	1.9
Oct 19	543	2.4	3.2	502	1.0	1.5
Nov 19	544	3.4	3.2	503	1.8	1.6
Dec 19 (r)	544	2.8	2.9	502	1.4	1.4
Jan 20	546 (r)	3.1	3.1	503	1.4	1.5
Feb 20 (p)	545	2.5	2.8	501	0.8	1.2
Regular pay (excluding bonuses)						
	Nominal earnings			Real earnings ³		
	Nominal Weekly Earnings (£)	% changes year on year		Weekly Earnings at constant 2015 prices (£)	% changes year on year	
		Single month	3 month average ²		Single month	3 month average ²
	KAI7	KAI8	KAI9	A2FC	A2F9	A2FA
Feb 18	482	2.9	2.8	459	0.4	0.1
Dec 18	495 (r)	3.3	3.4	465	1.3	1.2
Jan 19	498	3.6 (r)	3.5	467	1.9	1.5
Feb 19 (r)	497	3.3	3.4	466	1.5	1.5
Mar 19	498	3.1	3.3	466	1.2	1.5
Apr 19	503	4.0	3.4	468	2.0	1.5
May 19	504	3.8	3.6	469	1.9	1.7
Jun 19	506	4.0	3.9	470	2.1	2.0
Jul 19	507	3.8	3.9	470	1.8	1.9
Aug 19	508	3.6	3.8	471	1.8	1.9
Sep 19	509	3.6	3.6	471	1.9	1.8
Oct 19	510	3.2	3.5	472	1.6	1.8
Nov 19	510	3.2	3.4	472	1.8	1.8
Dec 19	511	3.2	3.2	473	1.8 (r)	1.7
Jan 20 (r)	511	2.8	3.1	472	1.0	1.5
Feb 20 (p)	511	2.8	2.9	471	1.1	1.3

Source: Monthly Wages & Salaries Survey

Earnings enquiries: 01633 456120

Email: earnings@ons.gov.uk

1. Estimates of total pay include bonuses but exclude arrears of pay.

2. The three month average figures are the changes in the average seasonally adjusted values for the three months ending with the relevant month compared with the same period a year earlier.

3. Estimates of real earnings are calculated by deflating the nominal earnings estimates by the Consumer Prices Index including owner occupiers' housing costs (CPIH), our preferred measure of consumer price inflation.

17 International comparisons of employment and unemployment

Employment rates as published by EUROSTAT: (not seasonally adjusted)					Unemployment rates as published by EUROSTAT on 1 April 2020 (seasonally adjusted)					
	Latest period		Employment rate (%) ^{1,2}	Change on year %		Latest Period		Unemployment rate (%) ³	Change on month %	Change on year %
United Kingdom (*)	ANZ6	Oct-Dec 19	75.6	0.6	United Kingdom (*)	ZXDW	Dec 19	3.7	0.0	-0.1
European Union (EU)					European Union (EU)					
Austria	YXSN	Oct-Dec 19	73.8	0.5	Austria	ZXDS	Feb 20	4.4	0.1	-0.3
Belgium	YXSO	Oct-Dec 19	65.3	0.1	Belgium	ZXDI	Feb 20	5.2	0.0	-0.3
Bulgaria	A495	Oct-Dec 19	70.0	2.3	Bulgaria	A492	Feb 20	4.1	0.0	-0.6
Croatia	GUMI	Oct-Dec 19	62.2	1.6	Croatia	GUMJ	Feb 20	6.2	-0.1	-1.0
Cyprus	A4AC	Oct-Dec 19	71.0	1.8	Cyprus	A4AN	Feb 20	5.8	-0.2	-1.7
Czech Republic	A4AD	Oct-Dec 19	75.3	-0.1	Czech Republic	A4AO	Feb 20	2.0	0.0	0.1
Denmark	YXSP	Oct-Dec 19	75.4	1.1	Denmark	ZXDJ	Feb 20	4.9	0.1	-0.2
Estonia	A4AE	Oct-Dec 19	76.1	0.3	Estonia	A4AP	Jan 20	4.7	0.3	0.5
Finland	YXSQ	Oct-Dec 19	72.7	0.6	Finland	ZXDU	Feb 20	6.5	0.0	-0.2
France	YXSR	Oct-Dec 19	65.9	0.5	France	ZXDN	Feb 20	8.1	-0.1	-0.6
Germany	YXSS	Oct-Dec 19	77.0	0.5	Germany	ZXDK	Feb 20	3.2	0.0	0.0
Greece	YXST	Oct-Dec 19	56.5	1.4	Greece	ZXDL	Jan 20	16.4	0.0	-2.1
Hungary	A4AF	Oct-Dec 19	70.3	0.8	Hungary	A4AQ	Jan 20	3.4	0.0	-0.1
Ireland	YXSU	Oct-Dec 19	70.2	1.1	Ireland	ZXDO	Mar 20	5.4	0.6	0.4
Italy	YXSV	Oct-Dec 19	59.2	0.7	Italy	ZXDP	Feb 20	9.7	-0.1	-0.8
Latvia	A4AG	Oct-Dec 19	72.7	0.9	Latvia	A4AR	Feb 20	6.4	-0.1	-0.2
Lithuania	A4AH	Oct-Dec 19	73.2	0.3	Lithuania	A4AS	Feb 20	6.6	0.0	0.6
Luxembourg	YXSW	Oct-Dec 19	67.9	-0.2	Luxembourg	ZXDQ	Feb 20	5.7	0.0	0.3
Malta	A4AI	Oct-Dec 19	74.1	1.3	Malta	A4AT	Feb 20	3.3	-0.1	-0.4
Netherlands	YXSX	Oct-Dec 19	78.4	0.5	Netherlands	ZXDR	Feb 20	2.9	-0.1	-0.5
Poland	A4AJ	Oct-Dec 19	68.5	1.2	Poland	A4AU	Feb 20	2.9	0.0	-0.9
Portugal	YXSY	Oct-Dec 19	70.6	0.7	Portugal	ZXDT	Feb 20	6.5	-0.2	0.0
Romania	A494	Oct-Dec 19	66.0	1.5	Romania	A48Z	Feb 20	3.9	0.0	0.1
Slovak Republic	A4AK	Oct-Dec 19	68.5	0.3	Slovak Republic	A4AV	Feb 20	5.5	0.0	-0.4
Slovenia	A4AL	Oct-Dec 19	71.6	-0.2	Slovenia	A4AW	Feb 20	3.6	-0.1	-0.9
Spain	YXSZ	Oct-Dec 19	63.7	0.7	Spain	ZXDM	Feb 20	13.6	-0.1	-0.6
Sweden	YXTA	Oct-Dec 19	76.7	-0.3	Sweden ⁵	ZXDV	Feb 20	7.6	0.4	0.9
Total EU ⁴	A496	Oct-Dec 19	68.6	0.7	Total EU ⁴	A493	Feb 20	6.5	0.0	-0.4
Eurozone ⁴	YXTC	Oct-Dec 19	68.3	0.7	Eurozone ⁴	ZXDH	Feb 20	7.3	-0.1	-0.5
Employment rates published by the OECD (seasonally adjusted)					Unemployment rates as published by national statistical offices (seasonally adjusted)					
Canada	A48O	Jan-Mar 20	73.2	1.0	Canada	ZXDZ	Mar 20	7.8	2.2	2.1
Japan	A48P	Oct-Dec 19	78.1	0.8	Japan	ZXDY	Feb 20	2.4	0.0	0.0
United States	A48Q	Jan-Mar 20	71.4	0.3	United States	ZXDX	Mar 20	4.4	0.9	0.6

Sources: EUROSTAT, OECD, national statistical offices.
Labour market statistics enquiries: labour.market@ons.gov.uk

(*) Note: The UK rates shown in this table are as published by EUROSTAT (the EUs statistical office). See Table 1 for the latest rates for the UK as published by ONS.

Caution should be taken with international comparisons of labour markets during the COVID-19 pandemic, since definitional definitions of economic measures, such as furloughing, will vary between countries.

- All employment rates shown in this table are for those aged from 15 to 64 except for the rate for the United States published by OECD which are for those aged from 16 to 64.
- The employment rates for the EU are published by EUROSTAT and are not seasonally adjusted. EUROSTAT do not publish seasonally adjusted (SA) employment rates but SA rates for some EU countries are published by OECD. These OECD employment rates are available on our website at [dataset A10](#).
- Unemployment rates published by EUROSTAT for most EU countries (but not for the UK), are calculated by extrapolating from the most recent LFS data using monthly registered unemployment data. A standard population basis (15-74) is used by EUROSTAT except for Spain, Italy and the UK (16-74). The unemployment rate for the US is based on those aged 16 and over, but the rates for Canada and Japan are for those aged 15 and over. All unemployment rates shown in this table are seasonally adjusted.
- The "Total EU" series consist of all 27 EU countries. The Eurozone figures consist of the following EU countries: Austria, Belgium, Cyprus, Estonia, Finland, France, Germany, Greece, Ireland, Italy, Latvia, Lithuania, Luxembourg, Malta, Netherlands, Portugal, Slovak Republic, Slovenia and Spain.
- The EU unemployment rates are as published on the EUROSTAT database. For Sweden the rates on the database differ from those shown in the EUROSTAT News Release published on 1 April 2020. This is because the figures for Sweden on the database are seasonally adjusted estimates but the figures for Sweden shown in the News Release are the trend component.

18 Labour disputes (first published 17 March 2020)

United Kingdom, not seasonally adjusted

	Working days lost (thousands) ^{1,2}	Working days lost in the Public Sector (thousands) ^{1,2}	Working days lost in the Private Sector (thousands) ^{1,2}	Number of stoppages ³	Number of stoppages in the Public Sector	Number of stoppages in the Private Sector	Workers involved (thousands) ^{1,3}
	1	2	3	4	5	6	7
	BBFW	F8XZ	F8Y2	BLUU	F8Y3	F8Y4	BLUT
2018 January	9	1	8	18	4	14	3
2019 January	11	1	11	10	2	8	6
February	7	2	5	11	5	6	6
March	9	1	8	14	6	8	5
April	2	1	2	8	1	7	1
May	10	1	10	14	2	12	5
June	12	1	12	24	5	19	3
July	11	4	7	24	9	15	7
August	7	1	6	10	2	8	2
September	9	1	8	14	3	11	3
October	8	1	7	13	5	8	2
November	84	14	69	13	4	9	21
December (r)	64	7	57	12	7	5	19
2020 January (p)	18	17	1	7	5	2	7
Cumulative totals 12 months to:							
Jan 19	275	26	249	82	23	59	44
Jan 20 (p)	242	50	192	99	34	65	43

Relationship between columns 1=2+3; 4=5+6

Data source: ONS Labour Disputes Survey
Labour disputes enquiries 01633 455400

- Estimates of working days lost and workers involved are shown to the nearest thousand. Unrounded estimates of less than 500 therefore round to zero.
- Due to rounding the working days lost for the public and private sectors may not add up to the total working days lost.
- The latest 12 month cumulative totals for the figures in these columns will not necessarily equal the sum of the 12 months as some disputes continue for over one month. These disputes appear in each month's data, but only once in the total.

VACANCIES

19 Vacancies¹ by size of business

United Kingdom (thousands), seasonally adjusted

		All Vacancies AP2Y	Number of employees				
			1-9	10-49	50-249	250-2499	2500+
			ALY5	ALY6	ALY7	ALY8	ALY9
Levels							
Jan-Mar 2018	(r)	817	126	115	122	162	293
Jan-Mar 2019	(r)	847	123	126	115	187	297
Feb-Apr 2019	(r)	847	126	122	115	190	295
Mar-May 2019	(r)	841	131	120	111	187	292
Apr-Jun 2019	(r)	831	118	121	114	185	293
May-Jul 2019	(r)	824	114	121	112	185	291
Jun-Aug 2019	(r)	818	112	121	111	184	290
Jul-Sept 2019	(r)	820	121	122	105	182	290
Aug-Oct 2019	(r)	803	113	119	102	178	290
Sept-Nov 2019	(r)	797	110	118	101	178	291
Oct-Dec 2019	(r)	801	110	119	103	180	290
Nov-Jan 2020	(r)	808	112	121	108	177	290
Dec-Feb 2020	(r)	817	117	121	113	171	295
Jan-Mar 2020	(p)	795	109	110	109	167	299
Change on quarter	*	-6	0	-9	6	-12	9
Change %	*	-0.8	-0.2	-7.2	5.6	-6.8	3.0
Change on year		-52	-13	-16	-6	-19	2
Change %		-6.2	-10.8	-12.5	-5.1	-10.4	0.6

1. Excludes Agriculture, Forestry and Fishing.

Source: ONS Vacancy Survey

Vacancy Survey enquiries: vacancy.survey@ons.gov.uk, 01633 456777

* Change on previous non-overlapping three month rolling average time period.

20 Vacancies¹ and Unemployment

United Kingdom (thousands), seasonally adjusted

		All Vacancies ¹ AP2Y	Unemployment ² MGSC	Number of unemployed people per vacancy JPC5
Levels				
Dec-Feb 2018	(r)	815	1,419	1.7
Dec-Feb 2019	(r)	848	1,343	1.6
Mar-May 2019	(r)	841	1,292	1.5
Jun-Aug 2019	(r)	818	1,314	1.6
Sep-Nov 2019	(r)	797	1,306	1.6
Dec-Feb 2020	(r)	817	1,364	1.7
Change on quarter		20	58	0.0
Change %		2.5	4.4	
Change on year		-31	22	0.1
Change %		-3.6	1.6	

Source: ONS Vacancy Survey/ Labour Force Survey

Vacancy Survey enquiries: vacancy.survey@ons.gov.uk, 01633 456777

1. Excludes Agriculture, Forestry and Fishing.

2. Unemployment estimates are produced from the Labour Force Survey (LFS) and are always one period behind the ONS Vacancy Survey estimates. This table therefore shows estimates for the same periods as shown in table 1 (which shows LFS estimates).

VACANCIES

21 Vacancies by industry

Standard Industrial Classification (2007)

United Kingdom (thousands), seasonally adjusted

SIC 2007 sections	All vacancies ¹	Mining & quarrying	Manufacturing	Electricity, gas, steam & air conditioning supply ²	Water supply, sewerage, waste & remediation activities	Construction	Wholesale & retail trade; repair of motor vehicles and motor cycles	Transport & storage	Accommodation & food service activities	Information & communication
	B-S	B	C	D	E	F	G	H	I	J
	AP2Y	JP9H	JP9I	JP9J	JP9K	JP9L	JP9M	JP9N	JP9O	JP9P
Levels (thousands)										
Jan-Mar 2018	(r) 817	1	58	4	4	22	134	42	90	45
Jan-Mar 2019	(r) 847	1	60	3	4	28	137	41	91	49
Feb-Apr 2019	(r) 847	2	57	4	4	27	137	41	95	47
Mar-May 2019	(r) 841	2	57	4	4	27	135	41	98	46
Apr-Jun 2019	(r) 831	2	56	4	4	27	135	41	93	44
May-Jul 2019	(r) 824	2	54	3	4	25	135	38	93	42
Jun-Aug 2019	(r) 818	2	54	3	4	24	128	35	95	42
Jul-Sept 2019	(r) 820	2	52	3	3	25	131	33	97	44
Aug-Oct 2019	(r) 803	2	51	3	3	24	128	32	92	43
Sept-Nov 2019	(r) 797	1	50	3	4	26	131	33	88	41
Oct-Dec 2019	(r) 801	2	52	3	4	26	130	35	86	40
Nov-Jan 2020	(r) 808	2	55	3	4	26	129	36	88	42
Dec-Feb 2020	(r) 817	2	56	3	3	28	133	35	90	43
Jan-Mar 2020	(p) 795	2	53	3	4	27	130	35	86	42
Change on quarter	* -6	0	1	0	0	1	-1	1	0	2
Change %	* -0.8	0.0	1.9	3.2	-5.4	4.3	-0.6	1.7	0.5	4.2
Change on year	-52	0	-8	0	-1	-1	-8	-6	-5	-7
Change %	-6.2	7.1	-12.6	-5.9	-12.5	-5.0	-5.5	-14.8	-5.8	-13.6
	AP2Z	JPA2	JPA3	JPA4	JPA5	JPA6	JPA7	JPA8	JPA9	JPB2
Vacancies per 100 employee jobs										
Jan-Mar 2018	(r) 2.7	1.8	2.3	2.6	1.9	1.5	2.9	2.9	3.9	3.5
Jan-Mar 2019	(r) 2.8	2.7	2.4	2.5	1.7	1.9	2.9	2.8	3.9	3.6
Feb-Apr 2019	(r) 2.8	2.9	2.3	2.6	1.7	1.9	3.0	2.7	4.1	3.5
Mar-May 2019	(r) 2.7	3.1	2.3	2.6	1.7	1.9	2.9	2.7	4.2	3.5
Apr-Jun 2019	(r) 2.7	2.9	2.2	2.7	1.9	1.8	2.9	2.7	4.0	3.3
May-Jul 2019	(r) 2.7	2.9	2.1	2.5	1.9	1.7	2.9	2.5	4.0	3.2
Jun-Aug 2019	(r) 2.7	3.1	2.2	2.4	1.7	1.6	2.8	2.3	4.1	3.2
Jul-Sept 2019	(r) 2.7	3.1	2.1	2.2	1.4	1.7	2.8	2.2	4.1	3.3
Aug-Oct 2019	(r) 2.6	2.9	2.0	2.3	1.5	1.7	2.8	2.1	3.9	3.2
Sept-Nov 2019	(r) 2.6	2.7	2.0	2.3	1.6	1.8	2.8	2.2	3.8	3.1
Oct-Dec 2019	(r) 2.6	2.9	2.1	2.3	1.6	1.8	2.8	2.3	3.7	3.0
Nov-Jan 2020	(r) 2.6	3.1	2.2	2.2	1.6	1.8	2.8	2.4	3.8	3.2
Dec-Feb 2020	(r) 2.7	2.9	2.2	2.3	1.4	1.9	2.9	2.4	3.9	3.2
Jan-Mar 2020	(p) 2.6	2.9	2.1	2.3	1.5	1.8	2.8	2.3	3.7	3.1
Change on quarter	* 0.0	0.0	0.0	0.1	-0.1	0.1	0.0	0.0	0.0	0.1
Change on year	-0.2	0.2	-0.3	-0.1	-0.2	-0.1	-0.2	-0.4	-0.2	-0.5

SIC 2007 sections	Financial & insurance activities	Real estate activities ²	Professional scientific & technical activities	Administrative & support service activities	Public admin & defence; compulsory social security	Education	Human health & social work activities	Arts, entertainment & recreation	Other service activities	Total services
	K	L	M	N	O	P	Q	R	S	G-S
	JP9Q	JP9R	JP9S	JP9T	JP9U	JP9V	JP9W	JP9X	JP9Y	JP9Z
Levels (thousands)										
Jan-Mar 2018	(r) 40	11	74	55	18	48	130	21	23	729
Jan-Mar 2019	(r) 35	13	81	50	20	51	136	23	23	750
Feb-Apr 2019	(r) 34	12	80	51	22	52	136	22	22	753
Mar-May 2019	(r) 34	11	80	49	22	52	138	21	21	749
Apr-Jun 2019	(r) 34	12	79	50	23	53	138	20	20	739
May-Jul 2019	(r) 34	11	80	48	22	52	139	23	19	736
Jun-Aug 2019	(r) 33	11	80	52	23	51	139	23	19	731
Jul-Sept 2019	(r) 32	10	84	54	22	49	139	20	20	734
Aug-Oct 2019	(r) 31	12	83	54	23	48	138	17	19	720
Sept-Nov 2019	(r) 31	11	79	52	23	51	138	16	19	714
Oct-Dec 2019	(r) 32	12	77	55	24	51	138	18	19	716
Nov-Jan 2020	(r) 31	11	76	53	22	53	137	22	19	718
Dec-Feb 2020	(r) 31	13	77	54	22	51	136	22	18	726
Jan-Mar 2020	(p) 30	13	73	52	22	50	135	23	17	708
Change on quarter	* -2	1	-4	-3	-2	-1	-3	5	-2	-9
Change %	* -6.3	10.7	-4.8	-6.1	-6.4	-2.0	-2.2	26.3	-9.5	-1.2
Change on year	-5	1	-8	2	2	-1	-1	0	-6	-43
Change %	-15.0	3.9	-10.3	4.2	9.5	-1.4	-0.8	0.0	-26.3	-5.7
	JPB3	JPB4	JPB5	JPB6	JPB7	JPB8	JPB9	JPC2	JPC3	JPC4
Vacancies per 100 employee jobs										
Jan-Mar 2018	(r) 3.8	2.0	2.9	2.0	1.4	1.8	3.2	2.8	3.8	2.8
Jan-Mar 2019	(r) 3.3	2.4	3.0	1.9	1.5	1.9	3.3	3.0	3.6	2.9
Feb-Apr 2019	(r) 3.3	2.3	3.0	1.9	1.6	2.0	3.3	3.0	3.4	2.9
Mar-May 2019	(r) 3.2	2.1	3.0	1.8	1.7	1.9	3.4	2.9	3.2	2.9
Apr-Jun 2019	(r) 3.2	2.3	2.9	1.8	1.7	2.0	3.4	2.7	3.0	2.8
May-Jul 2019	(r) 3.2	2.1	3.0	1.8	1.7	2.0	3.4	3.1	2.9	2.8
Jun-Aug 2019	(r) 3.2	2.1	3.0	1.9	1.7	1.9	3.4	3.1	3.0	2.8
Jul-Sept 2019	(r) 3.0	1.9	3.1	2.0	1.7	1.9	3.4	2.7	3.1	2.8
Aug-Oct 2019	(r) 3.0	2.2	3.1	2.0	1.8	1.8	3.4	2.3	2.9	2.7
Sept-Nov 2019	(r) 2.9	2.1	2.9	2.0	1.8	1.9	3.4	2.2	2.9	2.7
Oct-Dec 2019	(r) 3.0	2.3	2.9	2.1	1.8	1.9	3.4	2.4	2.9	2.7
Nov-Jan 2020	(r) 3.0	2.1	2.8	2.0	1.6	2.0	3.3	2.9	2.9	2.7
Dec-Feb 2020	(r) 2.9	2.5	2.9	2.0	1.6	1.9	3.3	3.0	2.7	2.8
Jan-Mar 2020	(p) 2.8	2.5	2.7	1.9	1.7	1.9	3.3	3.0	2.6	2.7
Change on quarter	* -0.2	0.2	-0.1	-0.1	-0.1	0.0	-0.1	0.6	-0.3	0.0
Change on year	-0.5	0.1	-0.3	0.1	0.1	0.0	0.0	0.0	-0.9	-0.2

1. Excludes Agriculture, Forestry and Fishing.

2. Not seasonally adjusted. These series do not display seasonality. Therefore the unadjusted series is the best estimate of a 'seasonally adjusted' series.

* Change on previous non-overlapping three month rolling average time period.

Source: ONS Vacancy Survey

Vacancy Survey enquiries: vacancy.survey@ons.gov.uk, 01633 456777

REDUNDANCIES

22 Redundancies: level and rates ¹

United Kingdom (seasonally adjusted)

	People (aged 16 and over)		Men (aged 16 and over)		Women (aged 16 and over)	
	Level (000s)	Rate ¹	Level (000s)	Rate ¹	Level (000s)	Rate ¹
	BEAO	BEIR	BEIU	BEIX	BEJA	BEJD
Dec-Feb 2018	97	3.6	55	4.0	42	3.1
Dec-Feb 2019	88	3.2	56	4.0	32	2.4
Mar-May 2019	101	3.6	55	4.0	45	3.3
Jun-Aug 2019	115	4.1	58	4.2	56	4.1
Sep-Nov 2019	115	4.2	63	4.6	52	3.8
Dec-Feb 2020	107	3.8	59	4.2	48	3.5
change on quarter	-8	-0.3	-5	-0.3	-4	-0.3
change %	-7.1		-7.3		-6.9	
change on year	19	0.7	3	0.2	16	1.1
change %	21.7		5.4		50.0	

Data source: Labour Force Survey

Labour market statistics enquiries: labour.market@ons.gov.uk

1. The redundancy rate is the ratio of the redundancy level for the given quarter to the seasonally adjusted number of employees in the previous quarter, multiplied by 1,000.

REGIONAL SUMMARY

23(1) Regional summary of labour market headline indicators

Thousands, seasonally adjusted

Headline estimates for December 2019 to February 2020

Area Codes	Area Names	Economically active ¹		Employment		Unemployment		Economically inactive	
		Aged 16+	Aged 16-64	Aged 16+	Aged 16-64	Aged 16+	Aged 16+	Aged 16-64	Aged 16-64
		Level	Rate (%) ²	Level	Rate (%) ²	Level	Rate (%) ³	Level	Rate (%) ²
K02000001	United Kingdom	34,437	79.8	33,073	76.6	1,364	4.0	8,370	20.2
K03000001	Great Britain	33,538	79.9	32,196	76.7	1,342	4.0	8,070	20.1
E92000001	England	29,219	80.3	28,038	77.0	1,181	4.0	6,884	19.7
E12000001	North East	1,294	76.9	1,221	72.5	73	5.6	378	23.1
E12000002	North West	3,687	79.1	3,528	75.6	158	4.3	941	20.9
E12000003	Yorkshire and The Humber	2,711	77.2	2,583	73.5	128	4.7	770	22.8
E12000004	East Midlands	2,476	81.0	2,376	77.7	100	4.0	561	19.0
E12000005	West Midlands	2,958	79.2	2,815	75.3	142	4.8	753	20.8
E12000006	East	3,239	81.1	3,125	78.2	114	3.5	713	18.9
E12000007	London	5,095	80.3	4,866	76.7	229	4.5	1,199	19.7
E12000008	South East	4,849	82.6	4,703	80.1	145	3.0	971	17.4
E12000009	South West	2,911	82.1	2,820	79.4	91	3.1	598	17.9
W92000004	Wales	1,525	76.9	1,469	74.0	56	3.7	442	23.1
S92000003	Scotland	2,793	78.4	2,689	75.4	105	3.7	745	21.6
N92000002	Northern Ireland	899	74.4	877	72.5	22	2.5	299	25.6

Change on quarter (change since September to November 2019)

Note: Changes on quarter at regional level are particularly subject to sampling variability and should be interpreted in the context of changes over several quarters rather than in isolation.

Area Codes	Area Names	Economically active ¹		Employment		Unemployment		Economically inactive	
		Aged 16+	Aged 16-64	Aged 16+	Aged 16-64	Aged 16+	Aged 16+	Aged 16-64	Aged 16-64
		Level	Rate (%) ²	Level	Rate (%) ²	Level	Rate (%) ³	Level	Rate (%) ²
K02000001	United Kingdom	230	0.3	172	0.2	58	0.1	-136	-0.3
K03000001	Great Britain	232	0.3	176	0.2	56	0.1	-135	-0.3
E92000001	England	213	0.3	166	0.2	47	0.1	-107	-0.3
E12000001	North East	7	0.8	15	1.1	-7	-0.6	-14	-0.8
E12000002	North West	-13	-0.5	-17	-0.6	4	0.1	25	0.5
E12000003	Yorkshire and The Humber	13	0.4	2	0.2	11	0.4	-15	-0.4
E12000004	East Midlands	16	0.6	11	0.5	4	0.2	-18	-0.6
E12000005	West Midlands	-3	0.2	-18	-0.1	15	0.5	-7	-0.2
E12000006	East	1	0.0	-7	-0.3	8	0.3	1	0.0
E12000007	London	133	1.3	118	1.1	15	0.2	-76	-1.3
E12000008	South East	17	0.2	30	0.4	-13	-0.3	-8	-0.2
E12000009	South West	41	-0.2	31	-0.4	10	0.3	6	0.2
W92000004	Wales	-15	-0.4	-24	-0.9	10	0.7	8	0.4
S92000003	Scotland	34	1.0	35	1.1	-1	-0.1	-36	-1.0
N92000002	Northern Ireland	-2	0.0	-4	-0.1	2	0.2	0	0.0

Change on year (change since December 2018 to February 2019)

Area Codes	Area Names	Economically active ¹		Employment		Unemployment		Economically inactive	
		Aged 16+	Aged 16-64	Aged 16+	Aged 16-64	Aged 16+	Aged 16+	Aged 16-64	Aged 16-64
		Level	Rate (%) ²	Level	Rate (%) ²	Level	Rate (%) ³	Level	Rate (%) ²
K02000001	United Kingdom	374	0.4	352	0.4	22	0.0	-166	-0.4
K03000001	Great Britain	361	0.4	336	0.4	26	0.0	-156	-0.4
E92000001	England	399	0.6	371	0.6	28	0.0	-194	-0.6
E12000001	North East	25	1.7	23	1.5	2	0.0	-28	-1.7
E12000002	North West	41	0.9	23	0.5	18	0.4	-39	-0.9
E12000003	Yorkshire and The Humber	-41	-1.6	-34	-1.4	-7	-0.2	55	1.6
E12000004	East Midlands	22	1.2	27	1.4	-4	-0.2	-36	-1.2
E12000005	West Midlands	12	0.6	23	1.0	-11	-0.4	-18	-0.6
E12000006	East	22	-0.6	8	-1.0	14	0.4	26	0.6
E12000007	London	206	1.9	195	1.9	11	0.0	-109	-1.9
E12000008	South East	88	1.0	98	1.2	-10	-0.3	-53	-1.0
E12000009	South West	23	-0.2	8	-0.6	16	0.5	8	0.2
W92000004	Wales	-51	-2.3	-36	-1.5	-15	-0.8	43	2.3
S92000003	Scotland	13	0.1	1	-0.2	12	0.4	-4	-0.1
N92000002	Northern Ireland	13	0.9	17	1.3	-4	-0.5	-11	-0.9

The Labour Force Survey is tabulated by region of residence.

1. Economically active = Employment plus Unemployment.

2. Denominator = all persons aged 16 to 64.

3. Denominator = total economically active

Source: Labour Force Survey
Labour market statistics enquiries: labour.market@ons.gov.uk

REGIONAL SUMMARY

23(2) Regional summary of Workforce Jobs

Thousands,
seasonally adjusted

Area Codes	Area Names	December 2019	Change on September 2019
K02000001	United Kingdom	35,832	67
K03000001	Great Britain	34,904	68
E92000001	England	30,615	63
E12000001	North East	1,211	-15
E12000002	North West	3,796	-53
E12000003	Yorkshire and The Humber	2,782	27
E12000004	East Midlands	2,448	-1
E12000005	West Midlands	2,941	-21
E12000006	East	3,269	40
E12000007	London	6,134	43
E12000008	South East	4,973	42
E12000009	South West	3,061	1
W92000004	Wales	1,467	-27
S92000003	Scotland	2,822	32
N92000002	Northern Ireland	921	0

Workforce jobs are mainly sourced from employer surveys and are tabulated by region of workplace.

HM Forces stationed abroad are included in the UK workforce jobs estimates but not in the regional estimates. The UK workforce jobs estimates therefore do not equal the sum of the regional estimates.