

Statistical bulletin

Labour market overview, UK: August 2019

Estimates of employment, unemployment, economic inactivity and other employment-related statistics for the UK.



Contact:
Debra Leaker
labour.market@ons.gov.uk
+44 (0)1633 455400

Release date:
13 August 2019

Next release:
10 September 2019

Table of contents

1. [Other pages in this release](#)
2. [Main points for April to June 2019](#)
3. [Analysis of the labour market](#)
4. [Data](#)
5. [Glossary](#)
6. [Measuring the data](#)
7. [Strengths and limitations](#)
8. [More about the labour market](#)
9. [You might also be interested in](#)

1 . Other pages in this release

Other commentary from the latest labour market data can be found on the following pages:

- [Employment in the UK](#)
- [Average weekly earnings in Great Britain](#)
- [Vacancies and jobs](#)

2 . Main points for April to June 2019

- The UK employment rate was estimated at 76.1%, the joint-highest on record since comparable records began in 1971.
- The UK unemployment rate was estimated at 3.9%; lower than a year earlier (4.0%); on the quarter the rate was 0.1 percentage points higher.
- The UK economic inactivity rate was estimated at 20.7%, a joint-record low.
- Estimated annual growth in average weekly earnings for employees in Great Britain increased to 3.7% for total pay (including bonuses) and 3.9% for regular pay (excluding bonuses).
- In real terms (after adjusting for inflation), total pay is estimated to have increased by 1.8% compared with a year earlier, and regular pay is estimated to have increased by 1.9%.

The data in this bulletin come from surveys of households and businesses. It is not possible to survey every household and business each month, so these statistics are estimates based on samples.

3 . Analysis of the labour market

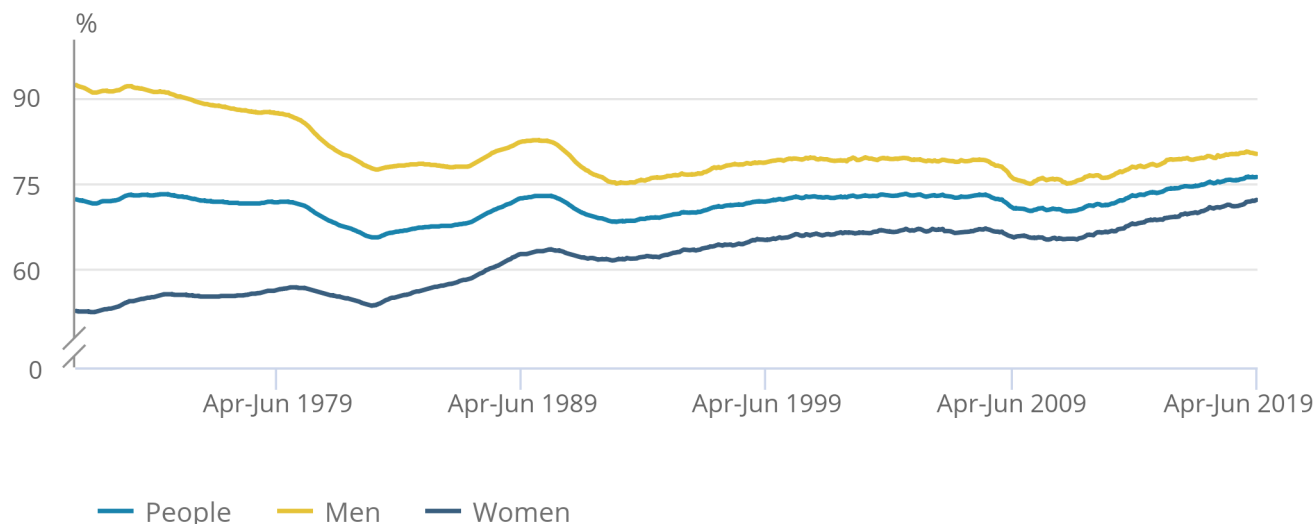
Employment

Figure 1: Employment rate for women was 72.1%, the highest on record

UK employment rates (aged 16 to 64 years), seasonally adjusted, January to March 1971 to April to June 2019

Figure 1: Employment rate for women was 72.1%, the highest on record on record

UK employment rates (aged 16 to 64 years), seasonally adjusted, January to March 1971 to April to June 2019



Source: Office for National Statistics – Labour Force Survey

[Employment](#) measures the number of people aged 16 years and over in paid work. The employment rate is the proportion of people aged from 16 to 64 years who are in paid work.

Estimated employment rates for men and women aged from 16 to 64 years have been generally increasing since early 2012. For April to June 2019, the estimated employment rate:

- for everyone was estimated at 76.1%, the joint-highest on record since comparable records began in 1971
- for men was 80.1%; unchanged from a year earlier but down 0.2 percentage points on the quarter, the third consecutive quarterly decrease
- for women was 72.1%, the highest since comparable records began in 1971

The increase in the employment rate for women in recent years is partly because of changes to the State Pension age for women, resulting in fewer women retiring between the ages of 60 and 65 years.

Estimates for April to June 2019 show 32.81 million people aged 16 years and over in employment, this is a record high and 425,000 more than for a year earlier. This annual increase of 425,000 was mainly because of more people working full-time (up 262,000 on the year to reach 24.11 million). Part-time working also showed an increase of 162,000 on the year to reach 8.70 million.

More information about employment can be found in the [Employment in the UK bulletin](#), published alongside this release.

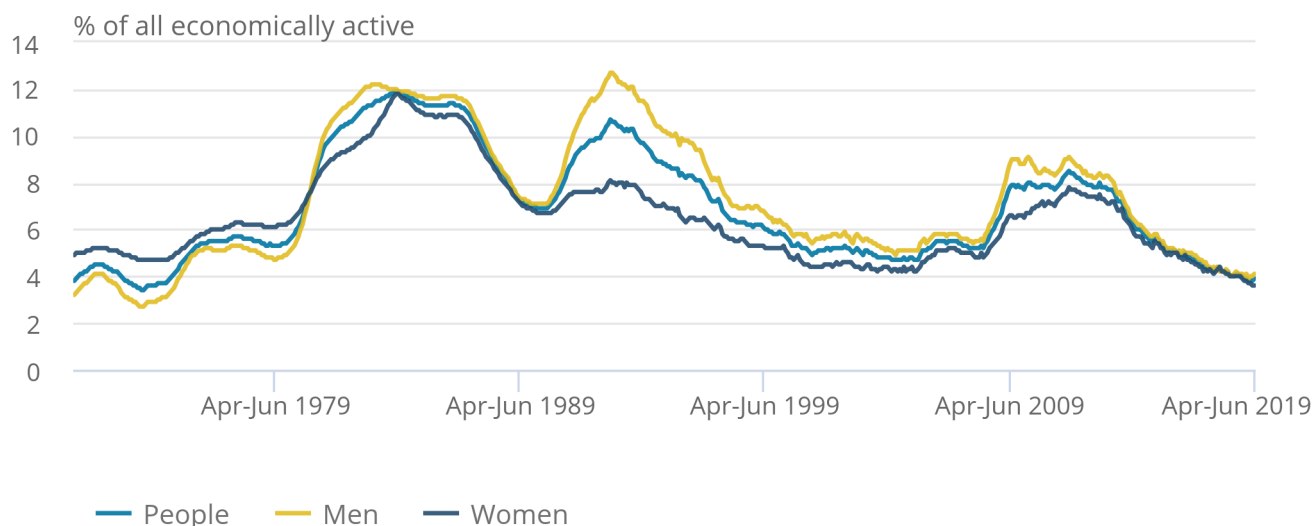
Unemployment

Figure 2: Unemployment rates have been generally falling for the last five years

UK unemployment rates (aged 16 years and over), seasonally adjusted, January to March 1971 to April to June 2019

Figure 2: Unemployment rates have been generally falling for the last five years

UK unemployment rates (aged 16 years and over), seasonally adjusted, January to March 1971 to April to June 2019



Source: Office for National Statistics – Labour Force Survey

[Unemployment](#) measures people without a job who have been actively seeking work within the last four weeks, and are available to start work within the next two weeks. The unemployment rate is the proportion of all employed and unemployed people (not the proportion of the total population) who are unemployed.

Estimated unemployment rates for both men and women aged 16 years and over have been generally falling since late 2013.

For April to June 2019, the estimated unemployment rate:

- for everyone was 3.9%, lower than a year earlier (4.0%), on the quarter the rate was 0.1 percentage points higher
- for men was 4.1%, slightly higher than a year earlier (4.0%)
- for women was 3.6%, the joint-lowest since comparable records began in 1971

For April to June 2019, an estimated 1.33 million people were unemployed, 33,000 fewer than a year earlier and 732,000 fewer than five years earlier. Looking in more detail at this fall of 732,000 unemployed people over the last five years:

- people unemployed for up to 6 months fell by 197,000 to 793,000
- people out of work for between 6 and 12 months fell by 137,000 to 194,000
- the largest fall was for people unemployed for over one year (down 398,000 to 342,000)

More information about unemployment can be found in the [Employment in the UK bulletin](#), published alongside this release.

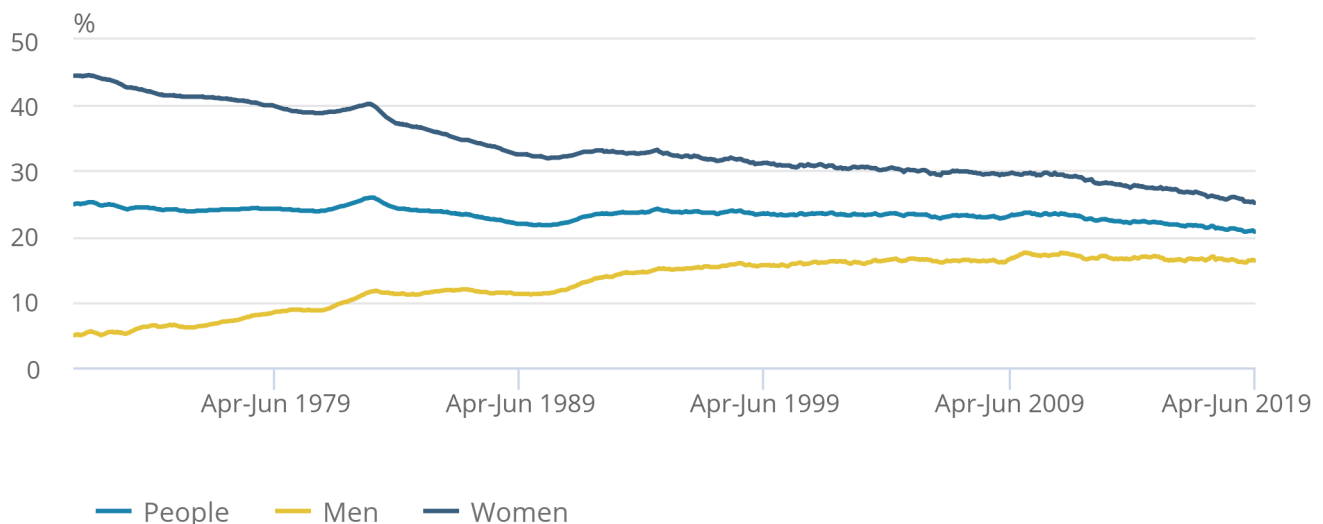
Economic inactivity

Figure 3: Economic inactivity rate for women has fallen to a record low of 25.1%

UK economic inactivity rates (aged 16 to 64 years), seasonally adjusted, January to March 1971 to April to June 2019

Figure 3: Economic inactivity rate for women has fallen to a record low of 25.1%

UK economic inactivity rates (aged 16 to 64 years), seasonally adjusted, January to March 1971 to April to June 2019



Source: Office for National Statistics – Labour Force Survey

[Economic inactivity](#) measures people without a job but who are not classed as unemployed because they have not been actively seeking work within the last four weeks and/or they are unable to start work within the next two weeks. Our headline measure of economic inactivity is for those aged from 16 to 64 years.

Since comparable records began in 1971, the economic inactivity rate for all people aged from 16 to 64 years has been generally falling (although it increased during recessions). This is because of a gradual fall in the economic inactivity rate for women.

For people aged from 16 to 64 years, for April to June 2019, the estimated economic inactivity rate:

- for all people was 20.7%, a joint-record low
- for men was 16.3%
- for women was 25.1%, a record low

Estimates for April to June 2019 showed 8.56 million people aged from 16 to 64 years not in the labour force (economically inactive). This was:

- 176,000 fewer than a year earlier
- 445,000 fewer than five years earlier

More information about economic inactivity can be found in the [Employment in the UK bulletin](#), published alongside this release.

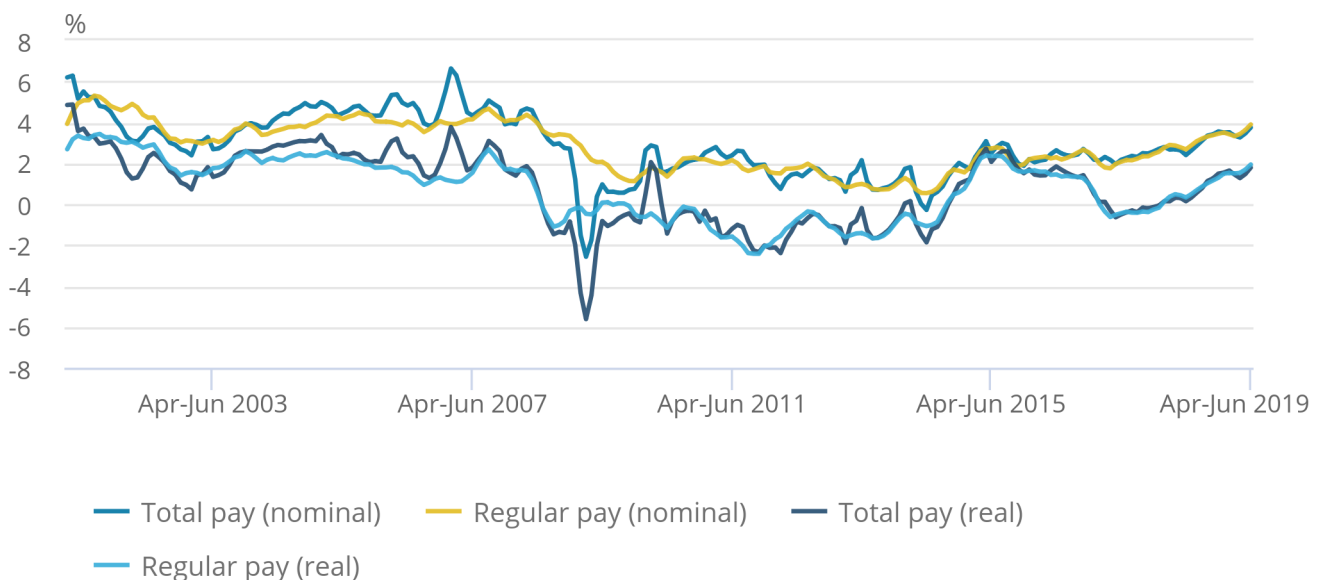
Earnings growth

Figure 4: Pay for employees (including bonuses) increased by 1.8% on the year when adjusted for inflation; pay excluding bonuses increased by 1.9%

Great Britain average weekly earnings annual growth rates, seasonally adjusted, January to March 2001 to April to June 2019

Figure 4: Pay for employees (including bonuses) increased by 1.8% on the year when adjusted for inflation; pay excluding bonuses increased by 1.9%

Great Britain average weekly earnings annual growth rates, seasonally adjusted, January to March 2001 to April to June 2019



Source: Office for National Statistics – Monthly Wages and Salaries Survey

The [earnings estimates](#) are not just a measure of pay rises as they also reflect changes in the number of paid hours worked and changes in the structure of the workforce; for example, more high-paid jobs would have an upward effect on earnings growth rates.

Pay in real terms is calculated as nominal average weekly earnings, deflated by the [Consumer Prices Index including owner occupiers' housing costs \(CPIH\)](#).

Annual growth in both total pay (including bonuses) and regular pay (excluding bonuses) has accelerated in recent months. Two contributing factors were introduced in April that have a potential impact in this reporting period, these are:

- pay increases for some NHS staff, which will impact public sector pay growth
- the introduction of the new National Living Wage rate (4.9 percentage points higher than the 2018 rate) and National Minimum Wage rates, which will impact the lowest-paid workers in sectors such as wholesaling, retailing, hotels and restaurants

For June 2019, average regular pay, before tax and other deductions, for employees in Great Britain was estimated at:

- £505 per week in nominal terms
- £469 per week in real terms (constant 2015 prices), higher than the estimate for a year earlier (£460 per week), but £4 (0.8%) lower than the pre-recession peak of £473 per week for April 2008

The equivalent figures for total pay are £499 per week in June 2019 and £525 in February 2008, a 5.0% difference.

More information about earnings growth can be found in the [Average weekly earnings in Great Britain bulletin](#), published alongside this release.

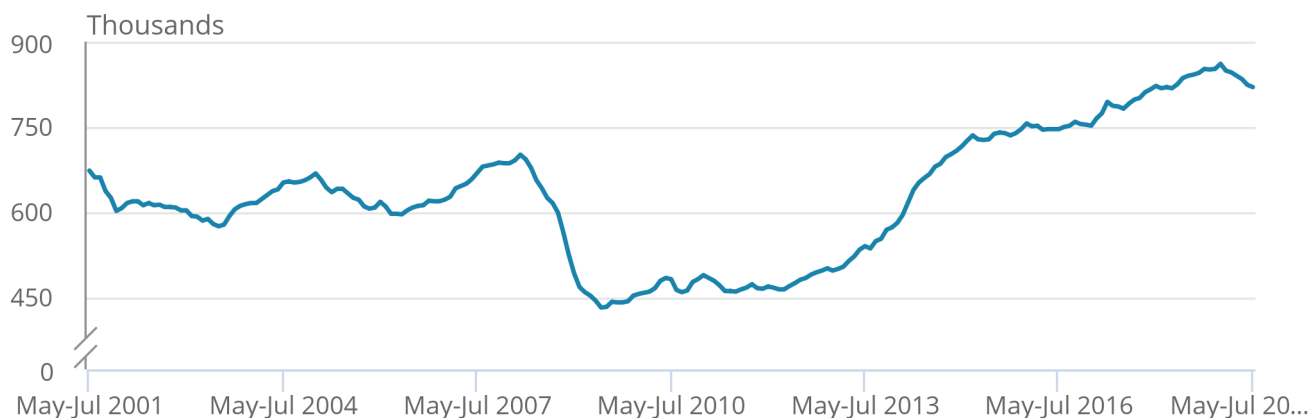
Vacancies

Figure 5: The number of vacancies in the UK has been generally increasing since 2012 although it has been falling since early 2019

Number of vacancies in the UK, seasonally adjusted, May to July 2001 to May to July 2019

Figure 5: The number of vacancies in the UK has been generally increasing since 2012 although it has been falling since early 2019

Number of vacancies in the UK, seasonally adjusted, May to July 2001 to May to July 2019



Source: Office for National Statistics – Vacancy Survey

The estimated [number of vacancies](#) in the UK fell sharply during the recession of 2008 to 2009. Since 2012, it has generally increased although it has been falling since early 2019. For May to July 2019, there were an estimated 820,000 vacancies in the UK, 20,000 fewer than a year earlier and 20,000 fewer than for the previous quarter (February to April 2019).

More information about vacancies can be found in the [Vacancies and jobs in the UK bulletin](#), published alongside this release.

4 . Data

[Summary of labour market statistics](#)

Dataset A01 | Released 13 August 2019

Estimates of employment, unemployment and other employment-related statistics for the UK.

[Employment, unemployment and economic inactivity](#)

Dataset A02 SA | Released 13 August 2019

Estimates of UK employment, unemployment and inactivity for people aged 16 years and over and people aged from 16 to 64 years based on the Labour Force Survey.

[Average weekly earnings](#)

Dataset EARN01 | Released 13 August 2019

Estimates of Great Britain earnings growth based on the Monthly Wages and Salaries Survey.

[Vacancies by industry](#)

Dataset VACS02 | Released 13 August 2019

Estimates of the number of UK job vacancies for each industry based on a survey of businesses.

Table 1: Summary of UK employment estimates for April to June 2019, seasonally adjusted

	Estimate (seasonally adjusted)	Sampling variability of estimate (1)	Change on quarter	Sampling variability of change on quarter (1)	Change on year	Sampling variability of change on year (1)
Employment (thousands of people aged 16 years and over)	32,811	± 177	115	± 150	425	± 238
Employment rate (% , aged 16 to 64 years)	76.1%	± 0.4	0.0	± 0.3	0.6	± 0.5
Unemployment (thousands of people aged 16 years and over)	1,329	± 68	31	± 73	-33	± 95
Unemployment rate (% , aged 16 years and over)	3.9%	± 0.2	0.1	± 0.2	-0.1	± 0.3
Economically inactive (thousands of people aged 16 to 64 years)	8,562	± 154	-47	± 133	-176	± 208
Economic inactivity rate (% , aged 16 to 64 years)	20.7%	± 0.4	-0.1	± 0.3	-0.5	± 0.5

Source: Office for National Statistics - Labour Force Survey

Notes

1. The sampling variability estimates are for 95% confidence intervals and are calculated on data that are not seasonally adjusted. [Back to table](#)

Table 2: Summary of employee earnings, Great Britain, April to June 2019, seasonally adjusted

	Annual growth rate (estimate)	Sampling variability of growth rate (1)
Total pay (nominal)	3.7	± 0.5
Total pay (real)	1.8	
Regular pay (nominal)	3.9	± 0.5
Regular pay (real)	1.9	

Source: Office for National Statistics - Monthly Wages and Salaries Survey

Notes

1. The sampling variability estimates are for 95% confidence intervals (where we are 95% certain the true value lies within the specified range) and are calculated on not seasonally adjusted data for single month growth rates for the 12 months from January to December 2014. It is not possible to calculate confidence intervals for growth rates in real terms. [Back to table](#)

5 . Glossary

Average weekly earnings

[Average weekly earnings](#) measures money paid by employers to employees in Great Britain before tax and other deductions from pay. The estimates are not just a measure of pay rises as they also reflect, for example, changes in the overall structure of the workforce. More high-paid jobs in the economy would have an upward effect on the earnings growth rate.

Economic inactivity

People not in the labour force (also known as [economically inactive](#)) are not in employment but do not meet the internationally accepted definition of unemployment because they have not been seeking work within the last four weeks and/or they are unable to start work in the next two weeks. The economic inactivity rate is the proportion of people aged from 16 to 64 years who are not in the labour force.

Employment

[Employment](#) measures the number of people in paid work and differs from the number of jobs because some people have more than one job. The employment rate is the proportion of people aged from 16 to 64 years who are in paid work.

Unemployment

[Unemployment](#) measures people without a job who have been actively seeking work within the last four weeks and are available to start work within the next two weeks. The unemployment rate is not the proportion of the total population who are unemployed. It is the proportion of the economically active population (those in work plus those seeking and available to work) who are unemployed.

Vacancies

[Vacancies](#) are defined as positions for which employers are actively seeking recruits from outside their business or organisation. The estimates are based on the Vacancy Survey – a survey of businesses designed to provide estimates of the stock of vacancies across the economy, excluding agriculture, forestry and fishing (a small sector for which the collection of estimates would not be practical).

A more detailed [Glossary](#) is available.

6 . Measuring the data

The employment, unemployment and economic inactivity estimates rely on data collected from the Labour Force Survey (a survey run by field interviewers with people across the UK every month).

The [Labour Force Survey performance and quality monitoring reports](#) provide data on response rates and other quality-related issues for the Labour Force Survey (LFS), including breakdowns of response by LFS wave, region and by question-specific response issues.

The average weekly earnings and vacancies estimates rely on data collected from surveys of employers.

The following Quality and Methodology Information (QMI) reports pull together important qualitative information on the various dimensions of data quality, as well as providing a summary of the methods used to compile the output:

- [Labour Force Survey Quality and Methodology Information](#)
- [Average weekly earnings \(AWE\) Quality and Methodology Information](#)
- [Vacancy Survey Quality and Methodology Information](#)

7 . Strengths and limitations

Re-assessment of labour market estimates

The Office for Statistics Regulation (OSR) will be carrying out a planned re-assessment of labour market employment estimates, which will work towards publishing a set of recommendations in early 2020. As part of this assessment, the OSR may contact you to: gather feedback on your use of labour market estimates; listen to your suggestions on ways we can build on our current engagement opportunities; and capture examples of where we have worked (or are working) together to improve communication and use of our statistics.

The three sections of the recommendations report will cover trustworthiness, quality and value. OSR will coordinate engagement with yourselves but please feel free to contact David Freeman (david.freeman@ons.gov.uk) or Matt Hughes (matthew.hughes@ons.gov.uk) if you wish to discuss further.

Accuracy of the statistics: estimating and reporting uncertainty

The figures in this bulletin come from surveys, which gather information from a sample rather than from the whole population. The sample is designed to be as accurate as possible given practical limitations such as time and cost constraints. Results from sample surveys are always estimates, not precise figures. This can have an impact on how changes in the estimates should be interpreted, especially for short-term comparisons.

As the number of people available in the sample gets smaller, the variability of the estimates that we can make from that sample size gets larger. Estimates for small groups (for example, unemployed people aged from 16 to 17 years), which are based on quite small subsets of the Labour Force Survey sample, are less reliable and tend to be more volatile than for larger aggregated groups (for example, the total number of unemployed people).

In general, changes in the numbers (and especially the rates) reported in this bulletin between three-month periods are small, and are not usually greater than the level that can be explained by sampling variability. Short-term movements in reported rates should be considered alongside longer-term patterns in the series and corresponding movements in other sources to give a fuller picture.

Further information is available in [A guide to labour market statistics](#).

Where to find data about uncertainty and reliability

[Dataset A11](#) shows sampling variabilities for estimates derived from the Labour Force Survey.

Sampling variability information for average weekly earnings growth rates is available from the “Sampling Variability” worksheets within [datasets EARN01](#) and [EARN03](#).

The sampling variability of the three-month average vacancies level is around plus or minus 1.5% of that level. Information on revisions is available in the [labour market statistics revisions policy](#).

8 . More about the labour market

[Trends in self-employment in the UK](#)

Article | Released 7 February 2018

Analysing the characteristics, income and wealth of the self-employed.

[Sickness absence in the labour market](#)

Article | Released 30 July 2018

The latest figures for 2017 show that the average number of sickness absence days that UK workers take has almost halved since 1993.

[People who have never worked](#)

Article | Released 28 February 2019

Analysis of the number of people who have never done paid work, their reasons for not working and some of their personal characteristics.

9 . You might also be interested in

[Labour market economic commentary](#)

Article | Released 13 August 2019

Additional economic analysis of the latest UK labour market headline statistics and long-term trends.

[Regional labour market statistics](#)

Bulletin | Released 13 August 2019

Regional breakdowns of changes in UK employment, unemployment and economic inactivity.

[Young people not in education, employment or training \(NEET\)](#)

Bulletin | Released 21 May 2019

Estimates of people in the UK aged from 16 to 24 years who are not in education, employment or training.

[Working and workless households in the UK](#)

Bulletin | Released 29 May 2019

The economic status of households in the UK and the people living in them, in households where at least one person is aged from 16 to 64 years.

Index of Tables

The table below provides an index of the tables appearing in this Statistical Bulletin and it shows how these table numbers match up with the Excel spreadsheet datasets which are available on the website at:
<https://www.ons.gov.uk/employmentandlabourmarket/peopleinwork/employmentandemployeetypes/bulletins/uklabourmarket/August2019/relateddata>

Statistical Bulletin table number	Table description	Dataset
	SUMMARY	
1	Labour Force Survey Summary	Dataset A02 SA
2 (*)	Labour market status by age group	Dataset A05 SA
	EMPLOYMENT AND JOBS	
3	Full-time, part-time & temporary workers	Dataset EMP01 SA
4	Public and private sector employment	Dataset EMP02
4(1)	Public sector employment by industry	Dataset EMP03
5	Workforce jobs summary	Dataset JOBS01
6 (**)	Workforce jobs by industry	Dataset JOBS02
7	Actual weekly hours worked	Dataset HOUR01 SA
7(1)	Usual weekly hours worked	Dataset HOUR02 SA
	NON-UK WORKERS	
8	Employment by country of birth and nationality	Dataset EMP06
8(1)	Unemployment and economic inactivity by country of birth and nationality	Dataset A12
	UNEMPLOYMENT	
9	Unemployment by age and duration	Dataset UNEM01 SA
	ECONOMIC ACTIVITY AND INACTIVITY	
10(*)	Economic activity by age	Dataset A05 SA
11	Economic inactivity by reason	Dataset INAC01 SA
12	Labour market and educational status of young people	Dataset A06 SA
	EARNINGS	
13	Average Weekly Earnings (nominal) - Total pay	Dataset EARN01
14	Average Weekly Earnings (nominal) - Bonus pay	Dataset EARN01
15	Average Weekly Earnings (nominal) - Regular pay	Dataset EARN01
16	Average Weekly Earnings real and nominal (summary table)	Dataset EARN01
	INTERNATIONAL SUMMARY	
17	International comparisons of employment and unemployment	Dataset A10
	LABOUR DISPUTES	
18	Labour disputes	Dataset LABD01
	VACANCIES	
19	Vacancies by size of business	Dataset VACS03
20	Vacancies and unemployment	Dataset VACS01
21	Vacancies by industry	Dataset VACS02
	REDUNDANCIES	
22	Redundancies levels and rates	Dataset RED01 SA
	REGIONAL SUMMARY	
23	Regional labour market summary	Dataset A07

(*) Tables 2 and 10 in the Statistical Bulletin pdf file have been amalgamated into one spreadsheet (Dataset A05 SA).

(**) Table JOBS02 provides more detail than Table 6 in the Statistical Bulletin pdf file.

The following symbols are used in the tables: p provisional, r revised, .. Not available, * suppressed due to small sample size.

The four-character identification codes appearing in the tables are the ONS references for the data series appearing in the Labour Market Statistics dataset which is available on the website at:

<https://www.ons.gov.uk/employmentandlabourmarket/peopleinwork/employmentandemployeetypes/datasets/labourmarketstatistics>

Summary of labour market statistics published on 13 August 2019

Series	Reference period	Latest estimate	Last time higher	Last time lower	Comparable data begins in
Employment level (aged 16 and over)	Apr-Jun 2019	32.811 million	Never	Mar-May 2019 (32.749 million)	Jan-Mar 1971
Employment rate (aged 16 to 64)	Apr-Jun 2019	76.1%	Never	Mar-May 2019 (76%)	Jan-Mar 1971
Unemployment level (aged 16 and over)	Apr-Jun 2019	1.329 million	Dec-Feb 2019 (1.343 million)	Mar-May 2019 (1.292 million)	Jan-Mar 1971
Unemployment rate (aged 16 and over)	Apr-Jun 2019	3.9%	Oct-Dec 2018 (4%)	Mar-May 2019 (3.8%)	Jan-Mar 1971
Inactivity level (aged 16 to 64)	Apr-Jun 2019	8.562 million	Mar-May 2019 (8.619 million)	Dec-Feb 2019 (8.536 million)	Jan-Mar 1971
Inactivity rate (aged 16 to 64)	Apr-Jun 2019	20.7%	Mar-May 2019 (20.9%)	Never	Jan-Mar 1971
Average Earnings (total pay - nominal)	Apr-Jun 2019	3.7%	Apr-Jun 2008 (4%)	Mar-May 2019 (3.5%)	Jan-Mar 2001
Average Earnings (regular pay - nominal)	Apr-Jun 2019	3.9%	Apr-Jun 2008 (4%)	Mar-May 2019 (3.6%)	Jan-Mar 2001
Average Earnings (total pay - real)	Apr-Jun 2019	1.8%	Aug-Oct 2019 (2.0%)	Mar-May 2019 (1.5%)	Jan-Mar 2001
Average Earnings (regular pay - real)	Apr-Jun 2019	1.9%	Jul-Sep 2015 (2.1%)	Mar-May 2019 (1.7%)	Jan-Mar 2001
Vacancies level	May-Jul 2019	820,000	Apr-Jun 2019 (824,000)	Feb-Apr 2018 (818,000)	Apr-Jun 2001

SUMMARY

1 Summary of headline LFS¹ indicators

(thousands)
seasonally

		LFS household population ¹		Headline indicators					
				Employment		Unemployment		Inactivity	
				Level	Rate ²	Level	Rate ³	Level	Rate ⁴
		All aged 16 & over	All aged 16 to 64	All aged 16 & over	All aged 16 to 64	All aged 16 & over	All aged 16 & over	All aged 16 to 64	All aged 16 to 64
		MGSL	LF2O	MGRZ	LF24	MGSC	MG SX	LF2M	LF2S
People									
	Apr-Jun 2017	52,716	41,149	32,065	75.1	1,485	4.4	8,778	21.3
	Apr-Jun 2018	53,001	41,243	32,386	75.5	1,362	4.0	8,739	21.2
	Jul-Sep 2018	53,070	41,264	32,431	75.6	1,377	4.1	8,726	21.1
	Oct-Dec 2018	53,138	41,284	32,597	75.8	1,363	4.0	8,632	20.9
	Jan-Mar 2019	53,206	41,304	32,697	76.1	1,298	3.8	8,609	20.8
	Apr-Jun 2019	53,275	41,323	32,811	76.1	1,329	3.9	8,562	20.7
	Change on quarter	69	20	115	0.0	31	0.1	-47	-0.1
	Change %	0.1	0.0	0.4		2.4		-0.5	
	Change on year	274	80	425	0.6	-33	-0.1	-176	-0.5
	Change %	0.5	0.2	1.3		-2.4		-2.0	
Men		MGSM	YBTG	MGSA	MG SV	MGSD	MG SY	YBSO	YBTM
	Apr-Jun 2017	25,766	20,446	17,010	79.8	815	4.6	3,338	16.3
	Apr-Jun 2018	25,930	20,508	17,161	80.1	723	4.0	3,366	16.4
	Jul-Sep 2018	25,968	20,522	17,201	80.1	748	4.2	3,348	16.3
	Oct-Dec 2018	26,006	20,534	17,290	80.3	746	4.1	3,307	16.1
	Jan-Mar 2019	26,043	20,546	17,275	80.3	701	3.9	3,354	16.3
	Apr-Jun 2019	26,081	20,558	17,263	80.1	740	4.1	3,353	16.3
	Change on quarter	38	12	-12	-0.2	40	0.2	-1	0.0
	Change %	0.1	0.1	-0.1		5.7		0.0	
	Change on year	151	49	103	0.0	17	0.1	-13	-0.1
	Change %	0.6	0.2	0.6		2.4		-0.4	
Women		MG SN	LF2P	MG SB	LF25	MG SE	MG SZ	LF2N	LF2T
	Apr-Jun 2017	26,951	20,703	15,055	70.5	670	4.3	5,440	26.3
	Apr-Jun 2018	27,071	20,735	15,226	71.0	639	4.0	5,373	25.9
	Jul-Sep 2018	27,102	20,743	15,229	71.1	629	4.0	5,378	25.9
	Oct-Dec 2018	27,132	20,750	15,308	71.4	617	3.9	5,325	25.7
	Jan-Mar 2019	27,163	20,758	15,422	71.8	597	3.7	5,255	25.3
	Apr-Jun 2019	27,194	20,766	15,548	72.1	589	3.6	5,209	25.1
	Change on quarter	31	8	127	0.3	-9	-0.1	-46	-0.2
	Change %	0.1	0.0	0.8		-1.4		-0.9	
	Change on year	123	31	322	1.1	-51	-0.4	-164	-0.8
	Change %	0.5	0.1	2.1		-7.9		-3.0	

Source:
Labour
Force
Survey

@ons.gov.uk

1. The Labour Force Survey (LFS) is a survey of households in the UK.
2. The headline employment rate is the number of people aged 16 to 64 in employment divided by the population aged 16 to 64.
3. The headline unemployment rate is the number of unemployed people (aged 16+) divided by the economically active population (aged 16+). The economically active population is defined as those in employment plus those who are unemployed.
4. The headline inactivity rate is the number of people aged 16 to 64 divided by the population aged 16-64.

Note on headline employment, unemployment and inactivity rates

The headline employment and inactivity rates are based on the population aged 16 to 64 but the headline unemployment rate is based on the economically active population aged 16 and over. The employment and inactivity rates for those aged 16 and over are affected by the inclusion of the retired population in the denominators and are therefore less meaningful than the rates for those aged from 16 to 64. However, for the unemployment rate for those aged 16 and over, no such effect occurs as the denominator for the unemployment rate is the economically active population which only includes people in work or actively seeking and able to work.

Note on headline employment, unemployment and inactivity levels

The headline employment and unemployment levels are for those aged 16 and over; they measure all people in work or actively seeking and able to work. However, the headline inactivity level is for those aged 16 to 64. The inactivity rate for those aged 16 and over is less meaningful as it includes elderly people who have retired from the labour force.

SUMMARY

2(1) Labour market status by age group

United Kingdom (thousands) seasonally adjusted

		Aged 16 and over						Aged 16-64					
		Employment		Unemployment		Inactivity		Employment		Unemployment		Inactivity	
		Level	Rate	Level	Rate	Level	Rate	Level	Rate	Level	Rate	Level	Rate
		MGRZ	MGRS	MGSC	MGSX	MGSI	YBTC	LF2G	LF24	LF2I	LF2Q	LF2M	LF2S
People	Apr-Jun 2017	32,065	60.8	1,485	4.4	19,166	36.4	30,904	75.1	1,466	4.5	8,778	21.3
	Apr-Jun 2018	32,386	61.1	1,362	4.0	19,252	36.3	31,159	75.5	1,346	4.1	8,739	21.2
	Jul-Sep 2018	32,431	61.1	1,377	4.1	19,262	36.3	31,176	75.6	1,362	4.2	8,726	21.1
	Oct-Dec 2018	32,597	61.3	1,363	4.0	19,178	36.1	31,307	75.8	1,345	4.1	8,632	20.9
	Jan-Mar 2019	32,697	61.5	1,298	3.8	19,212	36.1	31,414	76.1	1,280	3.9	8,609	20.8
	Apr-Jun 2019	32,811	61.6	1,329	3.9	19,134	35.9	31,448	76.1	1,313	4.0	8,562	20.7
	Change on quarter	115	0.1	31	0.1	-77	-0.2	34	0.0	33	0.1	-47	-0.1
	Change %	0.4		2.4		-0.4		0.1		2.6		-0.5	
	Change on year	425	0.5	-33	-0.1	-118	-0.4	289	0.6	-33	-0.1	-176	-0.5
	Change %	1.3		-2.4		-0.6		0.9		-2.4		-2.0	
Men		MGSA	MGSS	MGSD	MGSY	MGSJ	YBTD	YBSF	MGSV	YBSI	YBTJ	YBSO	YBTM
	Apr-Jun 2017	17,010	66.0	815	4.6	7,941	30.8	16,306	79.8	802	4.7	3,338	16.3
	Apr-Jun 2018	17,161	66.2	723	4.0	8,046	31.0	16,429	80.1	714	4.2	3,366	16.4
	Jul-Sep 2018	17,201	66.2	748	4.2	8,019	30.9	16,436	80.1	737	4.3	3,348	16.3
	Oct-Dec 2018	17,290	66.5	746	4.1	7,970	30.6	16,492	80.3	735	4.3	3,307	16.1
	Jan-Mar 2019	17,275	66.3	701	3.9	8,067	31.0	16,501	80.3	691	4.0	3,354	16.3
	Apr-Jun 2019	17,263	66.2	740	4.1	8,077	31.0	16,473	80.1	732	4.3	3,353	16.3
	Change on quarter	-12	-0.1	40	0.2	10	0.0	-28	-0.2	41	0.2	-1	0.0
	Change %	-0.1		5.7		0.1		-0.2		6.0		0.0	
	Change on year	103	0.0	17	0.1	31	-0.1	44	0.0	18	0.1	-13	-0.1
	Change %	0.6		2.4		0.4		0.3		2.5		-0.4	
Women		MGSB	MGST	MGSE	MGSZ	MGSK	YBTE	LF2H	LF25	LF2J	LF2R	LF2N	LF2T
	Apr-Jun 2017	15,055	55.9	670	4.3	11,226	41.7	14,599	70.5	664	4.4	5,440	26.3
	Apr-Jun 2018	15,226	56.2	639	4.0	11,206	41.4	14,730	71.0	632	4.1	5,373	25.9
	Jul-Sep 2018	15,229	56.2	629	4.0	11,243	41.5	14,740	71.1	624	4.1	5,378	25.9
	Oct-Dec 2018	15,308	56.4	617	3.9	11,208	41.3	14,815	71.4	610	4.0	5,325	25.7
	Jan-Mar 2019	15,422	56.8	597	3.7	11,144	41.0	14,913	71.8	589	3.8	5,255	25.3
	Apr-Jun 2019	15,548	57.2	589	3.6	11,057	40.7	14,975	72.1	581	3.7	5,209	25.1
	Change on quarter	127	0.4	-9	-0.1	-87	-0.4	62	0.3	-8	-0.1	-46	-0.2
	Change %	0.8		-1.4		-0.8		0.4		-1.4		-0.9	
	Change on year	322	0.9	-51	-0.4	-149	-0.7	245	1.1	-51	-0.4	-164	-0.8
	Change %	2.1		-7.9		-1.3		1.7		-8.1		-3.0	
		Aged 16-17						Aged 18-24					
		Employment		Unemployment		Inactivity		Employment		Unemployment		Inactivity	
		Level	Rate	Level	Rate	Level	Rate	Level	Rate	Level	Rate	Level	Rate
		YBTO	YBUA	YBVH	YBVK	YCAS	LWEX	YBTR	YBUD	YBVN	YBVQ	YCAV	LWFA
People	Apr-Jun 2017	340	23.8	111	24.7	978	68.4	3,552	62.7	434	10.9	1,679	29.6
	Apr-Jun 2018	357	25.6	102	22.3	937	67.1	3,478	62.1	387	10.0	1,739	31.0
	Jul-Sep 2018	329	23.6	89	21.3	976	70.0	3,473	62.2	388	10.1	1,725	30.9
	Oct-Dec 2018	315	22.6	101	24.3	977	70.2	3,515	63.2	409	10.4	1,640	29.5
	Jan-Mar 2019	342	24.6	81	19.2	969	69.6	3,497	63.1	385	9.9	1,661	30.0
	Apr-Jun 2019	347	24.9	83	19.4	961	69.1	3,463	62.7	419	10.8	1,640	29.7
	Change on quarter	5	0.4	2	0.2	-7	-0.5	-34	-0.4	34	0.9	-21	-0.3
	Change %	1.4		2.5		-0.8		-1.0		8.7		-1.3	
	Change on year	-10	-0.6	-19	-2.9	25	2.0	-15	0.7	32	0.8	-99	-1.3
	Change %	-2.8		-18.6		2.6		-0.4		8.1		-5.7	
Men		YBTP	YBUB	YBVI	YBVL	YCAT	LWEY	YBTS	YBUE	YBVO	YBVR	YCAW	LWFB
	Apr-Jun 2017	167	22.8	63	27.3	503	68.7	1,827	63.3	254	12.2	808	28.0
	Apr-Jun 2018	178	24.9	51	22.3	485	67.9	1,812	63.3	226	11.1	824	28.8
	Jul-Sep 2018	165	23.1	50	23.4	498	69.8	1,814	63.6	220	10.8	818	28.7
	Oct-Dec 2018	154	21.6	51	24.8	508	71.3	1,828	64.3	245	11.8	769	27.1
	Jan-Mar 2019	162	22.7	45	21.8	506	71.0	1,790	63.2	236	11.7	805	28.4
	Apr-Jun 2019	164	23.0	47	22.4	501	70.3	1,753	62.1	260	12.9	808	28.7
	Change on quarter	2	0.3	2	0.6	-5	-0.6	-38	-1.1	23	1.2	3	0.2
	Change %	1.4		5.2		-0.9		-2.1		9.9		0.4	
	Change on year	-14	-1.9	-4	0.1	16	2.4	-60	-1.2	34	1.8	-16	-0.1
	Change %	-7.9		-7.4		3.3		-3.3		15.0		-2.0	
Women		YBTQ	YBUC	YBVJ	YBVM	YCAU	LWEZ	YBTT	YBUF	YBVP	YBVS	YCAX	LWFC
	Apr-Jun 2017	173	24.8	49	22.0	475	68.2	1,725	62.1	180	9.5	871	31.4
	Apr-Jun 2018	179	26.2	51	22.2	452	66.3	1,666	60.8	162	8.9	915	33.3
	Jul-Sep 2018	164	24.1	39	19.1	478	70.3	1,658	60.7	168	9.2	906	33.2
	Oct-Dec 2018	161	23.6	50	23.8	469	69.0	1,687	62.0	165	8.9	871	32.0
	Jan-Mar 2019	180	26.5	36	16.7	463	68.2	1,707	62.9	149	8.0	856	31.6
	Apr-Jun 2019	183	26.9	36	16.4	460	67.8	1,711	63.3	159	8.5	832	30.8
	Change on quarter	3	0.4	0	-0.3	-3	-0.4	4	0.4	10	0.5	-24	-0.8
	Change %	1.5		-0.9		-0.6		0.2		6.9		-2.8	
	Change on year	4	0.7	-15	-5.8	8	1.5	45	2.6	-2	-0.3	-83	-2.6
	Change %	2.2		-29.8		1.9		2.7		-1.5		-9.0	

SUMMARY

2(2) Labour market status by age group

United Kingdom (thousands) seasonally adjusted

People	Aged 25-34						Aged 35-49					
	Employment		Unemployment		Inactivity		Employment		Unemployment		Inactivity	
	Level	Rate	Level	Rate	Level	Rate	Level	Rate	Level	Rate	Level	Rate
	YBTU	YBUG	YCGM	YCGP	YCAY	LWFD	YBTX	YBUJ	YCGS	YCGV	YCBB	LWFG
Apr-Jun 2017	7,390	83.3	308	4.0	1,174	13.2	10,834	84.4	332	3.0	1,666	13.0
Apr-Jun 2018	7,433	83.3	297	3.8	1,193	13.4	10,888	85.2	296	2.6	1,597	12.5
Jul-Sep 2018	7,453	83.4	292	3.8	1,188	13.3	10,855	85.0	316	2.8	1,597	12.5
Oct-Dec 2018	7,509	84.0	270	3.5	1,164	13.0	10,882	85.3	300	2.7	1,574	12.3
Jan-Mar 2019	7,547	84.3	253	3.2	1,150	12.8	10,859	85.2	292	2.6	1,592	12.5
Apr-Jun 2019	7,563	84.4	268	3.4	1,129	12.6	10,853	85.2	290	2.6	1,587	12.5
Change on quarter	15	0.1	15	0.2	-21	-0.2	-6	0.0	-2	0.0	-4	0.0
Change %	0.2		5.8		-1.8		-0.1		-0.7		-0.3	
Change on year	130	1.1	-29	-0.4	-63	-0.8	-36	0.1	-5	0.0	-10	0.0
Change %	1.7		-9.8		-5.3		-0.3		-1.8		-0.6	
Men	YBTV	YBUH	YCGN	YCGQ	YCAZ	LWFE	YBTY	YBUK	YCGT	YCGW	YCBB	LWFH
Apr-Jun 2017	3,974	89.8	156	3.8	297	6.7	5,730	90.5	160	2.7	443	7.0
Apr-Jun 2018	4,008	89.7	155	3.7	306	6.8	5,728	90.8	142	2.4	438	6.9
Jul-Sep 2018	4,010	89.6	153	3.7	315	7.0	5,720	90.8	162	2.7	421	6.7
Oct-Dec 2018	4,037	90.0	150	3.6	298	6.6	5,744	91.2	142	2.4	412	6.5
Jan-Mar 2019	4,048	90.1	132	3.1	313	7.0	5,733	91.1	127	2.2	432	6.9
Apr-Jun 2019	4,043	89.8	146	3.5	311	6.9	5,742	91.3	137	2.3	407	6.5
Change on quarter	-5	-0.3	15	0.3	-2	-0.1	9	0.2	11	0.2	-25	-0.4
Change %	-0.1		11.3		-0.7		0.2		8.4		-5.8	
Change on year	35	0.2	-9	-0.2	5	0.1	13	0.5	-5	-0.1	-32	-0.5
Change %	0.9		-5.8		1.7		0.2		-3.4		-7.2	
Women	YBTW	YBUI	YCGO	YCGR	YCBA	LWFF	YBTZ	YBUL	YCGU	YCGX	YCBD	LWFI
Apr-Jun 2017	3,416	76.9	151	4.2	877	19.7	5,104	78.5	172	3.3	1,223	18.8
Apr-Jun 2018	3,425	76.9	142	4.0	887	19.9	5,160	79.7	153	2.9	1,159	17.9
Jul-Sep 2018	3,443	77.3	138	3.9	874	19.6	5,135	79.4	155	2.9	1,176	18.2
Oct-Dec 2018	3,472	77.9	120	3.3	866	19.4	5,138	79.6	158	3.0	1,163	18.0
Jan-Mar 2019	3,500	78.5	122	3.4	837	18.8	5,126	79.5	166	3.1	1,160	18.0
Apr-Jun 2019	3,520	78.9	122	3.3	819	18.4	5,111	79.3	153	2.9	1,181	18.3
Change on quarter	20	0.4	0	0.0	-18	-0.4	-15	-0.2	-13	-0.2	21	0.3
Change %	0.6		-0.1		-2.2		-0.3		-7.7		1.8	
Change on year	95	2.0	-20	-0.6	-68	-1.6	-49	-0.4	0	0.0	21	0.4
Change %	2.8		-14.1		-7.7		-1.0		-0.3		1.9	
People	Aged 50-64						Age 65+					
	Employment		Unemployment		Inactivity		Employment		Unemployment		Inactivity	
	Level	Rate	Level	Rate	Level	Rate	Level	Rate	Level	Rate	Level	Rate
	LF26	LF2U	LF28	LF2E	LF2A	LF2W	LFK4	LFK6	K5HU	K5HW	LFL4	LFL6
Apr-Jun 2017	8,789	71.2	280	3.1	3,281	26.6	1,161	10.0	19	1.6	10,388	89.8
Apr-Jun 2018	9,002	71.8	263	2.8	3,273	26.1	1,228	10.4	17	1.3	10,513	89.4
Jul-Sep 2018	9,067	72.1	277	3.0	3,240	25.7	1,254	10.6	15	1.2	10,536	89.2
Oct-Dec 2018	9,087	71.9	266	2.8	3,277	25.9	1,290	10.9	18	1.4	10,546	89.0
Jan-Mar 2019	9,168	72.3	268	2.8	3,238	25.5	1,282	10.8	18	1.4	10,602	89.1
Apr-Jun 2019	9,222	72.5	252	2.7	3,244	25.5	1,363	11.4	16	1.2	10,572	88.5
Change on quarter	54	0.2	-15	-0.2	6	0.0	81	0.6	-2	-0.2	-30	-0.6
Change %	0.6		-5.7		0.2		6.3		-9.6		-0.3	
Change on year	220	0.7	-11	-0.2	-29	-0.6	135	1.0	0	-0.2	59	-1.0
Change %	2.4		-4.2		-0.9		11.0		-2.9		0.6	
Men	MGUX	YBUN	MGVM	MGXF	MGWB	LWFK	MGVA	YBUQ	MGVP	MGXI	MGWE	LWFN
Apr-Jun 2017	4,608	76.0	168	3.5	1,288	21.2	704	13.2	13	1.8	4,602	86.5
Apr-Jun 2018	4,702	76.4	139	2.9	1,313	21.3	732	13.5	9	1.3	4,680	86.3
Jul-Sep 2018	4,727	76.5	152	3.1	1,297	21.0	765	14.1	11	1.4	4,671	85.8
Oct-Dec 2018	4,729	76.3	148	3.0	1,320	21.3	798	14.6	11	1.4	4,663	85.2
Jan-Mar 2019	4,769	76.7	151	3.1	1,298	20.9	774	14.1	10	1.3	4,714	85.7
Apr-Jun 2019	4,772	76.5	141	2.9	1,326	21.3	790	14.3	9	1.1	4,724	85.5
Change on quarter	3	-0.2	-10	-0.2	28	0.4	16	0.2	-1	-0.2	11	-0.2
Change %	0.1		-6.7		2.2		2.1		-14.2		0.2	
Change on year	70	0.1	2	0.0	14	-0.1	58	0.8	-1	-0.2	44	-0.8
Change %	1.5		1.3		1.0		8.0		-6.6		0.9	
Women	LF27	LF2V	LF29	LF2F	LF2B	LF2X	LFK5	LFK7	K5HV	K5HX	LFL5	LFL7
Apr-Jun 2017	4,180	66.5	112	2.6	1,993	31.7	456	7.3	6	1.3	5,785	92.6
Apr-Jun 2018	4,300	67.3	124	2.8	1,960	30.7	496	7.8	7	1.5	5,833	92.1
Jul-Sep 2018	4,340	67.7	125	2.8	1,944	30.3	489	7.7	5	1.0	5,865	92.2
Oct-Dec 2018	4,357	67.7	118	2.6	1,957	30.4	492	7.7	7	1.4	5,883	92.2
Jan-Mar 2019	4,400	68.1	117	2.6	1,940	30.0	508	7.9	8	1.5	5,889	91.9
Apr-Jun 2019	4,451	68.7	111	2.4	1,918	29.6	573	8.9	7	1.3	5,848	91.0
Change on quarter	51	0.5	-5	-0.1	-22	-0.4	64	1.0	0	-0.2	-41	-1.0
Change %	1.2		-4.5		-1.1		12.7		-3.4		-0.7	
Change on year	151	1.3	-13	-0.4	-42	-1.1	77	1.1	0	-0.2	15	-1.1
Change %	3.5		-10.4		-2.2		15.5		1.8		0.3	

Source: Labour Force Survey

Labour market statistics enquiries: labour.market@ons.gov.uk

EMPLOYMENT AND JOBS

3 Full-time, part-time and temporary workers

United Kingdom (thousands of people aged 16 and over) seasonally adjusted

		All in employment					Full-time and part-time workers ¹							Total Workers with second jobs
		Total	Employees	Self employed	Unpaid family workers	Government supported training & employment programmes ²	Total people working full-time	total people working part-time	Employees working full time	Employees working part time	Self- employed people working full-time	Self- employed people working part-time		
People		1	2	3	4	5	6	7	8	9	10	11	12	
		MGRZ	MGRN	MGRQ	MGRT	MGRW	YCBE	YCBH	YCBK	YCBN	YCBQ	YCBT	YCBW	
	Apr-Jun 2017	32,065	27,075	4,807	113	70	23,555	8,510	20,067	7,008	3,422	1,385	1,119	
	Apr-Jun 2018	32,386	27,452	4,771	114	49	23,845	8,541	20,461	6,991	3,334	1,436	1,115	
	Jul-Sep 2018	32,431	27,510	4,760	114	46	23,927	8,503	20,560	6,950	3,328	1,433	1,127	
	Oct-Dec 2018	32,597	27,590	4,840	121	47	24,035	8,562	20,621	6,969	3,375	1,465	1,117	
	Jan-Mar 2019	32,697	27,593	4,930	131	42	24,110	8,586	20,566	7,027	3,496	1,434	1,112	
	Apr-Jun 2019	32,811	27,669	4,959	135	49	24,107	8,704	20,610	7,059	3,443	1,516	1,138	
	Change on quarter	115	76	29	4	6	-3	118	44	31	-53	82	26	
	Change %	0.4	0.3	0.6	3.2	14.5	0.0	1.4	0.2	0.4	-1.5	5.7	2.3	
	Change on year	425	216	188	21	-1	262	162	149	68	109	79	23	
	Change %	1.3	0.8	3.9	18.3	-1.2	1.1	1.9	0.7	1.0	3.3	5.5	2.1	
Men		MGSA	MGRO	MGRR	MGRU	MGRX	YCBF	YCBI	YCBL	YCBO	YCBR	YCBU	YCBX	
	Apr-Jun 2017	17,010	13,697	3,228	46	39	14,772	2,238	12,076	1,621	2,660	568	488	
	Apr-Jun 2018	17,161	13,908	3,173	53	27	14,889	2,272	12,255	1,652	2,606	567	471	
	Jul-Sep 2018	17,201	13,937	3,181	54	29	14,920	2,281	12,302	1,635	2,598	583	461	
	Oct-Dec 2018	17,290	13,974	3,231	54	30	14,989	2,301	12,333	1,641	2,633	598	488	
	Jan-Mar 2019	17,275	13,881	3,309	61	24	15,027	2,248	12,262	1,619	2,738	572	463	
	Apr-Jun 2019	17,263	13,883	3,287	63	30	14,961	2,302	12,271	1,611	2,657	630	466	
	Change on quarter	-12	2	-23	2	7	-65	53	9	-7	-81	59	3	
	Change %	-0.1	0.0	-0.7	3.9	27.5	-0.4	2.4	0.1	-0.5	-3.0	10.3	0.6	
	Change on year	103	-25	114	10	3	73	30	16	-41	51	63	-5	
	Change %	0.6	-0.2	3.6	19.8	11.7	0.5	1.3	0.1	-2.5	2.0	11.1	-1.1	
Women		MGSB	MGRP	MGRS	MGRV	MGRY	YCBG	YCBJ	YCBM	YCBP	YCBS	YCBV	YCBY	
	Apr-Jun 2017	15,055	13,379	1,579	67	31	8,783	6,272	7,992	5,387	762	817	631	
	Apr-Jun 2018	15,226	13,545	1,598	61	22	8,956	6,269	8,206	5,338	729	869	643	
	Jul-Sep 2018	15,229	13,574	1,579	59	17	9,007	6,222	8,259	5,315	730	849	666	
	Oct-Dec 2018	15,308	13,616	1,609	66	17	9,046	6,261	8,288	5,328	742	867	629	
	Jan-Mar 2019	15,422	13,712	1,621	70	19	9,084	6,338	8,304	5,408	758	863	648	
	Apr-Jun 2019	15,548	13,786	1,672	72	18	9,146	6,402	8,339	5,447	786	886	671	
	Change on quarter	127	74	51	2	0	62	64	35	39	28	23	23	
	Change %	0.8	0.5	3.2	2.5	-2.1	0.7	1.0	0.4	0.7	3.7	2.7	3.5	
	Change on year	322	241	74	10	-4	190	132	133	109	57	17	28	
	Change %	2.1	1.8	4.6	17.0	-17.0	2.1	2.1	1.6	2.0	7.9	1.9	4.3	
Temporary employees (reasons for temporary working)														
Part-time workers (reasons for working part-time) ³														
		Total	Total as % of all employees	Could not find permanent job	% that could not find permanent job	Did not want permanent job	Had a contract with period of training	Some other reason						
		13	14	15	16	17	18	19	20	21	22	23	24	25
People		YCBZ	YCCC	YCCF	YCCI	YCCL	YCCO	YCCR	YCCU	YCCX	YCDA	YCDD	YCDG	YCDJ
	Apr-Jun 2017	1,582	5.8	434	27.4	421	116	611	8,393	1,025	12.2	5,949	257	1,092
	Apr-Jun 2018	1,562	5.7	436	27.9	439	144	543	8,427	975	11.6	6,026	257	1,115
	Jul-Sep 2018	1,512	5.5	409	27.1	436	118	548	8,382	912	10.9	6,012	280	1,113
	Oct-Dec 2018	1,549	5.6	408	26.3	459	127	556	8,434	892	10.6	6,114	262	1,098
	Jan-Mar 2019	1,528	5.5	387	25.3	451	131	559	8,461	931	11.0	6,092	271	1,102
	Apr-Jun 2019	1,476	5.3	361	24.4	452	133	530	8,575	914	10.7	6,215	278	1,101
	Change on quarter	-52	-0.2	-26	-0.9	1	2	-29	113	-17	-0.3	123	7	0
	Change %	-3.4		-6.8		0.2	1.2	-5.1	1.3	-1.8		2.0	2.6	0.0
	Change on year	-86	-0.4	-75	-3.5	13	-11	-13	147	-60	-0.9	189	21	-14
	Change %	-5.5		-17.2		3.0	-7.7	-2.4	1.7	-6.2		3.1	8.3	-1.2
Men		YCCA	YCCD	YCCG	YCCJ	YCCM	YCCP	YCCS	YCCV	YCCY	YCDB	YCDE	YCDH	YCDK
	Apr-Jun 2017	738	5.4	218	29.6	201	52	267	2,189	439	20.1	1,177	91	458
	Apr-Jun 2018	732	5.3	230	31.4	184	68	250	2,220	444	20.0	1,170	93	488
	Jul-Sep 2018	734	5.3	219	29.9	200	59	255	2,218	416	18.8	1,191	94	492
	Oct-Dec 2018	742	5.3	213	28.7	209	66	253	2,239	406	18.1	1,244	94	473
	Jan-Mar 2019	698	5.0	206	29.5	184	64	244	2,190	394	18.0	1,236	94	439
	Apr-Jun 2019	680	4.9	191	28.0	188	63	239	2,242	399	17.8	1,281	95	442
	Change on quarter	-18	-0.1	-16	-1.5	4	-1	-5	51	4	-0.2	45	0	3
	Change %	-2.6		-7.6		2.0	-1.5	-2.0	2.3	1.1		3.6	0.3	0.8
	Change on year	-52	-0.4	-39	-3.4	3	-5	-11	22	-45	-2.2	111	2	-46
	Change %	-7.1		-17.1		1.9	-7.5	-4.4	1.0	-10.2		9.5	1.8	-9.5
Women		YCCB	YCCE	YCHH	YCKK	YCCN	YCCQ	YCCT	YCCW	YCCZ	YCDC	YCDE	YCDI	YCDL
	Apr-Jun 2017	845	6.3	216	25.5	221	65	343	6,204	586	9.4	4,772	166	634
	Apr-Jun 2018	830	6.1	206	24.9	255	75	293	6,207	531	8.6	4,856	164	627
	Jul-Sep 2018	778	5.7	190	24.5	236	59	293	6,164	496	8.0	4,821	186	621
	Oct-Dec 2018	807	5.9	195	24.1	249	61	302	6,195	486	7.8	4,870	168	625
	Jan-Mar 2019	830	6.1	181	21.8	267	67	315	6,271	537	8.6	4,856	177	663
	Apr-Jun 2019	795	5.8	170	21.4	264	69	291	6,333	515	8.1	4,934	184	659
	Change on quarter	-35	-0.3	-11	-0.4	-3	3	-24	62	-21	-0.4	79	7	-4
	Change %	-4.2		-5.9		-1.0	3.7	-7.5	1.0	-3.9		1.6	3.8	-0.5
	Change on year	-34	-0.4	-36	-3.4	10	-6	-2	125	-15	-0.4	78	20	33
	Change %	-4.1		-17.4		3.8	-7.9	-0.7	2.0	-2.9		1.6	12.0	5.2

Relationship between columns: 1= 2+3+4+5; 1=6+7; 2=8+9; 3=10+11; 13=15+17+18+19; 20=9+11; 14=13/2; 16=15/13; 22=21/20

Source: Labour Force Survey

1. The split between full-time and part-time employment is based on respondents' self-classification.

Labour market statistics enquiries: labour.market@ons.gov.uk

2. This series does not include all people on these programmes; it only includes those engaging in any form of work, work experience or work-related training.

3. These series cover Employees and Self-employed only. These series include some temporary employees recorded in columns 13 to 19.

4. The total includes those who did not give a reason for working part-time and it therefore does not equal the sum of columns 21, 23, 24 and 25.

EMPLOYMENT AND JOBS

4 Public and private sector employment

(first published on 11 June 2019)

United Kingdom (thousands of people aged 16 and over), seasonally adjusted									
	Public sector		Private sector ¹		Total employment ²	Public sector excluding effects of major reclassifications (See Explanatory note at bottom of table)		Private sector excluding effects of major reclassifications (See Explanatory note at bottom of table)	
	(000s)	(%)	(000s)	(%)		(000s)	(%)	(000s)	(%)
	1	2	3	4	5	6	7	8	9
	G7AU	G9BZ	G7K5	G9C2	G7GO	MFY7	MFY9	MFZ2	MFY5
Dec 16	5,472	17.2	26,375	82.8	31,847	5,209	16.4	26,638	83.6
Mar 17	5,473	17.1	26,483	82.9	31,956	5,211	16.3	26,745	83.7
Jun 17	5,485	17.1	26,648	82.9	32,133	5,223	16.3	26,910	83.7
Sep 17	5,475	17.1	26,619	82.9	32,094	5,218	16.3	26,876	83.7
Dec 17	5,341	16.6	26,900	83.4	32,241	5,224	16.2	27,017	83.8
Mar 18	5,351 r	16.5	27,038 r	83.5	32,389	5,233	16.2	27,156	83.8
Jun 18	5,357	16.5	27,051	83.5	32,408	5,249	16.2	27,159	83.8
Sep 18	5,360	16.5	27,132	83.5	32,492	5,272	16.2	27,220	83.8
Dec 18	5,375 r	16.4	27,339 r	83.6	32,714	5,286 r	16.2	27,428 r	83.8
Mar 19	5,390	16.5	27,356	83.5	32,746	5,303	16.2	27,443	83.8
Change on quarter	15	0.1	17	-0.1	32	17	0.0	15	0.0
Change %	0.3	-	0.1	-	0.1	0.3	-	0.1	-
Change on year	39	0.0	318	0.0	357	70	0.0	287	0.0
Change %	0.7	-	1.2	-	1.1	1.3	-	1.1	-

Enquiries 01633 455400

Source: Labour Force Survey (LFS) and returns from public sector organisations

Relationship between columns: 2 = 1/5*100; 3 = 5-1; 4 = 3/5*100, 5=6+8

See footnotes under table 4(1)

4(1) Public sector employment by industry

(first published on 11 June 2019)

(first published on 11 June 2019)

United Kingdom (thousands of people aged 16 and over), seasonally adjusted

	Construction	HM Forces ³	Police (including civilians)	Public administration	Of which: Civil Service ⁴	Education	National Health Service	Other health and social work	Other (including financial corporations)	Total public sector employment ⁵
	1	2	3	4	5	6	7	8	9	10
	G7ER	G7EU	G7EX	G7F2	G7D6	G7F5	G7FG	G7FJ	G7FM	G7AU
Dec 16	39	157	246	1,003	416	1,513	1,600	279	633	5,472
Mar 17	40	157	245	1,005	419	1,509	1,613	278	628	5,473
Jun 17	39	156	245	1,012	423	1,507	1,624	274	625	5,485
Sep 17	38	155	245	1,016	423	1,499	1,629	273	623	5,475
Dec 17	37	155	246	1,018	427	1,496	1,637	230	523	5,341
Mar 18	35	155	246	1,024 r	430	1,498	1,643	229	524 r	5,351
Jun 18	35	153	246	1,030	431	1,503	1,650	223	513	5,357
Sep 18	34	153	247	1,034	436	1,507	1,664	216	507	5,360
Dec 18	35 r	151	247	1,040	440	1,509	1,671 r	215	504 r	5,375
Mar 19	36	153	249	1,052	446	1,508	1,683	215	497	5,390
Change on quarter	1	2	2	12	6	-1	12	0	-7	15
Change %	2.9	1.3	0.8	1.2	1.4	-0.1	0.7	0.0	-1.4	0.3
Change on year	1	-2	3	28	16	10	40	-14	-27	39
Change %	2.9	-1.3	1.2	2.7	3.7	0.7	2.4	-6.1	-5.2	0.7

Enquiries 01633 455400

Source: returns from public sector organisations

Enquiries 01633 455400

Source: returns from public sector organisations

Explanatory Note: The public and private sector employment series have been affected by a number of major reclassifications where bodies employing large numbers of people have moved between the public and private sectors. These major reclassifications are as follows:

Further Education corporations and Sixth Form College corporations in England are included in the private sector from June 2012 but in the public sector for earlier time periods.

Royal Mail plc is included in the private sector from December 2013 but in the public sector for earlier time periods.

Lloyds Banking Group plc is included in the public sector from December 2008 to December 2013 but in the private sector for earlier and later time periods.

Royal Bank of Scotland plc is included in the public sector from December 2008 but in the private sector for earlier time periods.

Network Rail is included in the private sector before December 2002. From December 2002 onwards it is included in the public sector (except for the period from June 2003 to March 2004, when it is included in the private sector).

Northern Rock is included in the public sector from December 2007 until December 2011 but in the private sector for earlier and later time periods.

Bradford and Bingley is included in the public sector from September 2008 but in the private sector for earlier time periods.

Welsh Further Education colleges are included in the private sector from March 2015 but in the public sector for earlier time periods.

Housing associations in England are included in the public sector between September 2008 and September 2017; they are in the private sector for earlier and later time periods.

Housing associations in Scotland are included in the public sector from September 2001 until June 2018; they are included in the private sector for earlier and later time periods.

Housing associations in Wales are included in the private sector from June 2018; they are included in the public sector for earlier time periods.

Housing associations in Northern Ireland are included in the public sector back to the start of the time series in March 1999.

The series shown at Table 4 (in columns 6 to 9) for public and private sector employment excluding the effects of major reclassifications show all of the above mentioned bodies included in the private sector for all time periods and excluded from the public sector for all time periods. When using figures from this table, the latest estimate of the number of people employed in the public and private sectors should be taken from columns 1 and 3 respectively. However the quarterly and annual changes in employment shown in these columns are affected by reclassifications. Figures from columns 6 and 8 should be used for assessments of the recent underlying changes in public and private sector employment. The changes in employment shown in these columns are measured on a consistent basis to remove the effect of major reclassifications.

1. Estimated as the difference between LFS total employment and the data from public sector organisations.

2. LFS employment data for March refer to February-April, June refers to May-July, September refers to August-October and December refers to November-January.

3. This series excludes locally engaged staff stationed outside the United Kingdom.

4. This series excludes the Northern Ireland Civil Service.

5. This series may not exactly equal the sum of the components because each component is independently seasonally adjusted.

EMPLOYMENT AND JOBS

5 Workforce jobs

(first published on 11 June 2019)

United Kingdom (thousands), seasonally adjusted

	Workforce jobs	Employee jobs	Self-employment jobs ¹	HM Forces	Government-supported trainees ¹
	1	2	3	4	5
	DYDC	BCAJ	DYZN	LOJX	LOJU
Mar 17	34,865	30,144	4,502	157	61
Jun 17	34,864	30,115	4,549	156	45
Sep 17	34,948	30,219	4,527	155	46
Dec 17	34,856	30,188	4,483	155	31
Mar 18	34,949	30,271	4,496	154	28
Jun 18	35,028	30,311	4,536	153	28
Sep 18	35,104	30,451	4,477	153	23
Dec 18 (r)	35,283	30,521	4,589	152	21
Mar 19 (p)	35,538	30,701	4,657	152	27
Change on quarter	255	180	69	1	6
Change %	0.7	0.6	1.5	0.5	26.2
Change on year	589	430	161	-2	-1
Change %	1.7	1.4	3.6	-1.1	-3.1

Relationship between columns: 1=2+3+4+5

See footnotes under table 6

6 Workforce jobs by industry (first published on 11 June 2019)

Standard Industrial Classification (2007)

United Kingdom (thousands), seasonally adjusted

SIC 2007 sections	All jobs A-T	Agriculture, forestry & fishing A	Mining & quarrying B	Manufacturing C	Electricity, gas, steam & air conditioning supply D	Water supply, sewerage, waste & remediation activities E	Construction F	Wholesale & retail trade; repair of motor vehicles and motor cycles G	Transport & storage H	Accommodation & food service activities I	Information & communication J
	DYDC	JWR5	JWR6	JWR7	JWR8	JWR9	JWS2	JWS3	JWS4	JWS5	JWS6
Mar 17	34,865	427	57	2,652	144	216	2,328	5,009	1,735	2,378	1,468
Jun 17	34,864	409	60	2,684	147	218	2,321	5,031	1,727	2,397	1,509
Sep 17	34,948	421	58	2,697	144	221	2,350	4,985	1,694	2,386	1,488
Dec 17	34,856	420	60	2,708	143	228	2,340	4,996	1,680	2,342	1,484
Mar 18	34,949	401	62	2,705	146	225	2,339	4,998	1,678	2,382	1,530
Jun 18	35,028	392	62	2,731	147	226	2,356	4,983	1,705	2,415	1,559
Sep 18	35,104	387	60	2,719	150	226	2,367	4,967	1,708	2,394	1,570
Dec 18 (r)	35,283	346	57	2,707	145	232	2,393	4,986	1,762	2,416	1,587
Mar 19 (p)	35,538	360	59	2,735	139	242	2,394	4,999	1,749	2,427	1,616
Change on quarter	255	15	2	28	-6	10	1	13	-13	11	29
Change %	0.7	4.2	3.6	1.0	-4.3	4.3	0.1	0.3	-0.8	0.4	1.8
Change on year	589	-40	-3	30	-7	17	55	2	71	45	86
Change %	1.7	-10.1	-4.2	1.1	-4.6	7.3	2.4	0.0	4.2	1.9	5.6

SIC 2007 sections	Financial & insurance activities K	Real estate activities L	Professional scientific & technical activities M	Administrative & support service activities N	Public admin & defence; compulsory social security ² O	Education P	Human health & social work activities Q	Arts, entertainment & recreation R	Other service activities by households, etc. S	People employed T	Total services G-T
	JWS7	JWS8	JWS9	JWT2	JWT3	JWT4	JWT5	JWT6	JWT7	KW78	JWT8
Mar 17	1,116	584	3,029	2,984	1,467	2,940	4,335	1,015	913	67	29,040
Jun 17	1,121	554	2,978	2,985	1,485	2,923	4,359	987	904	65	29,026
Sep 17	1,107	573	3,009	3,051	1,485	2,932	4,324	1,040	906	74	29,055
Dec 17	1,113	587	2,998	2,996	1,481	2,916	4,373	1,025	908	60	28,957
Mar 18	1,122	586	2,985	2,961	1,486	2,943	4,394	1,019	925	61	29,071
Jun 18	1,110	555	2,973	2,993	1,493	2,946	4,376	1,034	906	68	29,115
Sep 18	1,122	583	3,011	2,988	1,494	2,957	4,423	1,026	891	60	29,196
Dec 18 (r)	1,111	580	3,063	2,966	1,504	2,973	4,435	1,045	924	50	29,403
Mar 19 (p)	1,116	567	3,134	2,966	1,514	2,986	4,471	1,068	936	59	29,608
Change on quarter	5	-13	71	1	10	13	36	23	12	9	205
Change %	0.4	-2.2	2.3	0.0	0.7	0.4	0.8	2.2	1.3	18.9	0.7
Change on year	-6	-19	149	5	27	43	76	49	12	-1	537
Change %	-0.6	-3.3	5.0	0.2	1.8	1.5	1.7	4.8	1.3	-2.3	1.8

Workforce jobs enquiries 01633 456776

Sources: Employer surveys, Labour Force Survey and administrative sources

1. Workforce Jobs figures are a measure of jobs rather than people. For this reason estimates of self-employment jobs and government supported trainee jobs differ from estimates of people in self-employment and in government supported training and employment programmes shown at Table 3. The estimates for government supported trainees shown in this table exclude trainees with contracts of employment as such people are included in the estimates of employee jobs.

2. This series is not exclusively a public sector series as it includes some private sector jobs. See table 4 for estimates of public and private sector employment.

EMPLOYMENT AND JOBS

7 Actual weekly hours worked

United Kingdom (hours worked by people aged 16 and over), seasonally adjusted

	Total weekly hours (millions) ¹²	Average (mean) actual weekly hours worked			
		All workers ¹	Full-time workers ³	Part-time workers ³	Second Jobs
		YBUS	YBUY	YBVB	YBVE
People					
Apr-Jun 2017	1,034.8	32.3	37.6	16.3	9.3
Apr-Jun 2018	1,033.6	31.9	37.1	16.2	10.1
Jul-Sep 2018	1,042.7	32.2	37.3	16.3	9.8
Oct-Dec 2018	1,042.0	32.0	37.1	16.2	9.9
Jan-Mar 2019	1,052.9	32.2	37.5	16.3	9.6
Apr-Jun 2019	1,052.6	32.1	37.3	16.3	9.6
Change on quarter	-0.3	-0.1	-0.2	0.1	0.0
Change %	0.0	-0.4	-0.4	0.4	-0.3
Change on year	19.0	0.2	0.2	0.1	-0.5
Change %	1.8	0.5	0.6	0.8	-4.9
Men					
Apr-Jun 2017	626.1	36.8	39.5	16.3	10.1
Apr-Jun 2018	620.5	36.2	38.9	15.7	11.3
Jul-Sep 2018	625.9	36.4	39.2	16.2	10.5
Oct-Dec 2018	626.7	36.2	38.9	16.3	10.7
Jan-Mar 2019	631.0	36.5	39.2	16.2	10.8
Apr-Jun 2019	625.9	36.3	39.0	16.3	10.4
Change on quarter	-5.1	-0.3	-0.3	0.1	-0.4
Change %	-0.8	-0.7	-0.7	0.7	-4.0
Change on year	5.4	0.1	0.1	0.6	-0.9
Change %	0.9	0.3	0.1	4.1	-8.1
Women					
Apr-Jun 2017	408.6	27.1	34.3	16.3	8.8
Apr-Jun 2018	413.1	27.1	34.0	16.4	9.2
Jul-Sep 2018	416.8	27.4	34.3	16.4	9.2
Oct-Dec 2018	415.3	27.1	34.1	16.2	9.2
Jan-Mar 2019	422.0	27.4	34.5	16.3	8.7
Apr-Jun 2019	426.7	27.4	34.6	16.3	9.0
Change on quarter	4.7	0.1	0.1	0.0	0.3
Change %	1.1	0.3	0.2	0.2	3.2
Change on year	13.6	0.3	0.5	0.0	-0.2
Change %	3.3	1.2	1.6	-0.3	-1.6

Source: Labour Force Survey

Labour market statistics enquiries: labour.market@ons.gsi.gov.uk

1 Main and second job

2 Total actual weekly hours worked including paid and unpaid overtime.

3 Main job only. The split between full-time and part-time employment is based on respondents' self-classification.

7 (1) Usual weekly hours of work¹

United Kingdom, seasonally adjusted

	All in Employment (%)			Employees (%)			Self-Employed (%)		
	People	Men	Women	People	Men	Women	People	Men	Women
Apr-Jun 2018									
Less than 6 Hours	1.3	0.9	1.8	0.9	0.6	1.1	3.2	1.9	6.0
6 up to 15 hours	6.4	3.5	9.7	5.8	3.1	8.7	9.1	4.6	18.1
16 up to 30 hours	20.0	10.1	31.1	19.5	8.9	30.5	22.5	15.5	36.4
31 up to 45 hours	54.2	60.1	47.5	56.9	63.3	50.3	39.1	46.2	24.9
Over 45 hours	18.1	25.4	9.9	16.9	24.1	9.5	26.0	31.8	14.6
Total (thousands)	32,386	17,161	15,226	27,452	13,908	13,545	4,771	3,173	1,598
Jan-Mar 2019									
Less than 6 Hours	1.4	0.9	1.9	1.0	0.6	1.3	3.2	1.9	5.9
6 up to 15 hours	6.2	3.3	9.5	5.7	2.9	8.5	8.8	4.6	17.4
16 up to 30 hours	20.1	10.5	30.8	19.6	9.0	30.3	23.0	16.5	36.2
31 up to 45 hours	53.7	59.3	47.5	56.6	62.9	50.2	38.1	44.4	25.2
Over 45 hours	18.6	26.0	10.2	17.2	24.6	9.7	26.9	32.6	15.4
Total (thousands)	32,697	17,275	15,422	27,593	13,881	13,712	4,930	3,309	1,621
Apr-Jun 2019									
Less than 6 Hours	1.5	0.9	2.1	1.0	0.6	1.4	3.3	1.7	6.5
6 up to 15 hours	6.4	3.5	9.6	5.7	2.9	8.6	9.6	5.5	17.6
16 up to 30 hours	20.0	10.3	30.7	19.5	8.9	30.1	23.0	16.3	36.1
31 up to 45 hours	53.9	59.8	47.3	56.8	63.5	50.1	38.1	44.6	25.4
Over 45 hours	18.3	25.5	10.3	17.0	24.1	9.9	26.0	31.9	14.4
Total (thousands)	32,811	17,263	15,548	27,669	13,883	13,786	4,959	3,287	1,672

1 Total usual weekly hours worked by people aged 16 and over in main job including paid and unpaid overtime.

Source: Labour Force Survey

Labour market statistics enquiries: labour.market@ons.gsi.gov.uk

NON-UK WORKERS

8(1) Employment levels and rates by country of birth and nationality

United Kingdom (thousands of people aged 16 and over) not seasonally adjusted																				
Country of birth	Europe										Africa		Asia			America and Oceania				
	European Union (EU)										Other Europe (not in EU)	Of which:		Total Asia	Of which: India	Of which: Pakistan and Bangladesh	Total America and Oceania	Of which: USA	Of which: Australia and New Zealand	Total Non-EU ⁷
	Total ¹	UK	Non UK	Total Europe	Total EU (EU27) ²	EU14 ³	EU8 ⁴	EU2 ⁵	Other EU ⁶	Total Africa		South Africa								
Levels (aged 16 and over)																				
Country of birth	MGTM	JF6F	JF6G	FSC2	EQ4Q	JJR3	JJR5	EQ4R	FSC3	FSC4	FSC5	JJS3	FSC6	JJS7	JJS9	FSC7	JJR7	JJS5	EQ4S	
Apr - Jun 2017	31,996	26,345	5,648	2,595	2,366	972	1,004	358	31	230	981	212	1,527	438	380	546	82	137	3,283	
Apr - Jun 2018	32,321	26,720	5,597	2,575	2,350	1,014	906	391	38	225	877	168	1,508	503	341	638	100	156	3,248	
Jul - Sep 2018	32,503	26,963	5,532	2,517	2,288	978	901	370	39	229	878	159	1,479	473	337	658	96	152	3,244	
Oct - Dec 2018	32,671	27,011	5,651	2,550	2,303	989	886	384	43	248	893	174	1,568	476	344	640	107	130	3,349	
Jan - Mar 2019	32,641	26,838	5,796	2,666	2,420	994	947	438	41	246	933	200	1,536	452	366	662	108	139	3,376	
Apr - Jun 2019	32,752	26,967	5,777	2,692	2,438	1,019	971	407	41	254	923	198	1,504	475	387	658	105	167	3,339	
Change on year	430	246	180	118	88	5	64	15	3	29	46	31	-4	-28	46	20	5	11	91	
Change %	1.3	0.9	3.2	4.6	3.8	0.5	7.1	3.9	8.4	13.1	5.3	18.4	-0.3	-5.6	13.3	3.1	4.6	7.2	2.8	
Nationality	MGTM	JF6H	JF6I	FSC8	EQ4U	JJR4	JJR6	EQ4V	FSC9	FSCE	FSD2	JJS4	FSD3	JJS8	JJT2	FSD4	JJR8	JJS6	EQ4W	
Apr - Jun 2017	31,996	28,454	3,537	2,444	2,349	1,010	995	332	11	96	314	76	508	161	95	271	74	81	1,189	
Apr - Jun 2018	32,321	28,787	3,527	2,373	2,269	990	881	387	11	103	262	55	569	211	101	324	92	103	1,258	
Jul - Sep 2018	32,503	29,028	3,467	2,341	2,231	980	880	360	11	109	249	50	545	187	91	332	100	86	1,236	
Oct - Dec 2018	32,671	29,098	3,569	2,400	2,274	1,011	869	370	24	126	277	64	593	194	107	299	96	71	1,295	
Jan - Mar 2019	32,641	28,943	3,698	2,513	2,381	1,018	925	423	16	132	273	71	597	182	115	315	101	75	1,317	
Apr - Jun 2019	32,752	29,084	3,661	2,490	2,368	1,019	952	375	22	122	289	63	567	187	121	314	78	95	1,292	
Change on year	430	298	133	118	99	29	71	-12	11	18	28	8	-2	-23	20	-10	-14	-9	34	
Change %	1.3	1.0	3.8	5.0	4.4	3.0	8.1	-3.1	95.5	17.8	10.6	13.7	-0.4	-11.1	20.0	-3.1	-14.9	-8.4	2.7	
Rates (aged 16 to 64)																				
Country of birth	LF9D	LFM6	LFM7	FSD5	EQ4Y	LFM8	LFM9	EQ4Z	FSD6	FSD7	FSD8	LFN4	FSD9	LFN6	LFN7	FSE2	LFN2	LFN5	EQ52	
Apr - Jun 2017	74.9	75.5	72.5	79.2	80.6	77.6	82.6	84.7	68.1	67.3	72.4	85.9	62.5	72.7	54.1	76.2	73.1	84.7	67.6	
Apr - Jun 2018	75.4	75.7	74.0	81.2	82.8	79.5	86.8	83.3	72.5	68.3	72.1	83.0	64.2	80.3	54.4	76.6	73.4	85.4	68.7	
Jul - Sep 2018	75.7	76.1	74.2	81.5	82.3	79.7	85.6	82.4	72.2	74.6	72.9	83.5	64.4	77.0	55.5	75.7	74.2	81.5	69.3	
Oct - Dec 2018	76.0	76.3	74.7	81.6	82.6	79.8	86.1	83.5	71.8	73.0	73.3	84.7	65.5	75.5	55.9	77.6	79.1	85.7	70.1	
Jan - Mar 2019	75.9	76.3	74.6	81.8	82.8	80.1	85.1	84.6	79.1	72.7	73.1	88.2	64.6	75.3	57.6	77.8	78.4	84.7	69.7	
Apr - Jun 2019	76.0	76.3	74.6	82.2	83.1	80.2	85.2	86.2	78.3	74.4	73.2	87.4	63.4	75.5	59.0	78.6	73.9	87.7	69.3	
Change on year	0.6	0.5	0.6	1.0	0.4	0.7	-1.6	2.9	5.8	6.1	1.1	4.4	-0.8	-4.8	4.7	2.1	0.5	2.3	0.7	
Nationality	LF9D	LFN8	LFN9	FSE3	EQ54	LFO2	LFO3	EQ55	FSE4	FSE5	FSE6	LFO6	FSE7	LFO8	LFO9	FSE8	LFO4	LFO7	EQ56	
Apr - Jun 2017	74.9	75.2	72.8	79.8	80.8	77.9	83.1	84.3	53.1	60.9	66.8	86.3	53.2	65.2	48.7	73.5	70.7	86.9	60.9	
Apr - Jun 2018	75.4	75.5	74.5	81.5	83.0	80.3	87.0	83.1	46.7	58.3	67.6	89.5	56.4	79.3	49.0	75.5	72.2	86.0	62.8	
Jul - Sep 2018	75.7	75.8	75.0	82.1	82.8	80.6	86.5	82.6	39.6	69.8	68.4	87.1	56.0	72.2	46.7	77.1	76.9	80.5	64.1	
Oct - Dec 2018	76.0	76.0	75.8	82.6	83.3	81.0	86.0	84.5	68.9	72.3	70.5	86.6	58.3	69.7	48.4	77.0	73.7	86.1	65.6	
Jan - Mar 2019	75.9	76.1	75.3	82.1	82.7	79.9	85.0	84.9	75.0	72.9	68.8	91.4	57.2	70.6	50.9	76.9	78.3	82.7	64.8	
Apr - Jun 2019	76.0	76.1	75.0	82.5	83.3	80.8	85.0	85.9	83.7	69.5	70.7	90.2	54.3	69.3	53.8	76.8	73.1	86.3	63.4	
Change on year	0.6	0.6	0.5	1.0	0.3	0.5	-2.0	2.8	36.9	11.2	3.0	0.7	-2.1	-10.0	4.9	1.3	0.9	0.3	0.6	
Source: Labour Force Survey																				
Labour market statistics enquiries: labour.market@ons.gov.uk																				

1. The total series includes people who do not state their country of birth or nationality. The total levels series MGTM does not therefore equal the sum of the "UK" and "Non-UK" series.

2. This series consists of all 27 EU member states excluding the UK. This series equals the sum of EU14, EU8, EU2 and Other EU.

3. Austria, Belgium, Denmark, Finland, France, Germany, Greece, Ireland, Italy, Luxembourg, Netherlands, Portugal, Spain and Sweden.

4. Czech Republic, Estonia, Hungary, Latvia, Lithuania, Poland, Slovak Republic and Slovenia.

5. Romania and Bulgaria.

6. Cyprus, Malta and Croatia

7. Total Non-EU equals the sum of Other Europe, Total Africa, Total Asia and Total America and Oceania

The estimates shown in this table relate to the number of people in employment and should not be used as a proxy for flows of foreign migrants into the UK.

NON-UK WORKERS

8(2) Unemployment and economic inactivity levels and rates by country of birth and nationality

United Kingdom (thousands of people) not seasonally adjusted

Unemployment (all aged 16 and over)															Economically inactive (all aged from 16 to 64)																																																											
Total ¹															UK															Non-UK															EU27 ²															Non-EU														
																																																												</														

Source: Labour Force Survey

Labour market statistics enquiries: labour.market@ons.gov.uk

1. The total series includes people who do not state their country of birth or nationality. The total levels series therefore do not equal the sum of the "UK" and "Non-UK" series.

2. This series consists of all 27 EU member states excluding the UK.

3. This series consists of those people whose main reason for being economically inactive was because they were students. It does not include all students as some students will be included in the employment and unemployment estimates.

UNEMPLOYMENT

9(1) Unemployment by age and duration

United Kingdom (thousands) seasonally adjusted

		All aged 16 & over							All aged 16 - 64						
People		All	Rate (%) ¹	Up to 6 months	Over 6 and up to 12 months	All over 12 months	% over 12 months	All over 24 months	All	Rate (%) ¹	Up to 6 months	Over 6 and up to 12 months	All over 12 months	% over 12 months	All over 24 months
		1	2	3	4	5	6	7	8	9	10	11	12	13	14
		MGSC	MG SX	YBWF	YBWG	YBWH	YBWI	YBWL	LF2I	LF2Q	LF2Y	LF32	LF34	LF36	LF38
	Apr-Jun 2017	1,485	4.4	876	236	373	25.1	197	1,466	4.5	868	230	368	25.1	195
	Apr-Jun 2018	1,362	4.0	797	211	354	26.0	192	1,346	4.1	787	207	351	26.1	191
	Jul-Sep 2018	1,377	4.1	796	214	368	26.7	205	1,362	4.2	791	211	359	26.4	204
	Oct-Dec 2018	1,363	4.0	805	208	350	25.7	163	1,345	4.1	792	204	349	25.9	160
	Jan-Mar 2019	1,298	3.8	771	180	346	26.7	171	1,280	3.9	764	178	339	26.5	167
	Apr-Jun 2019	1,329	3.9	793	194	342	25.7	169	1,313	4.0	785	192	336	25.6	165
	Change on quarter	31	0.1	22	14	-4	-1.0	-2	33	0.1	21	14	-3	-0.9	-2
	Change %	2.4		2.8	7.5	-1.3		-0.9	2.6		2.8	8.0	-0.8		-1.4
	Change on year	-33	-0.1	-4	-17	-13	-0.3	-23	-33	-0.1	-2	-15	-15	-0.5	-33
	Change %	-2.4		-0.5	-8.1	-3.5		-11.9	-2.4		-0.3	-7.2	-4.4		-13.6
Men		MGSD	MG SY	MGYK	MGYM	MGYO	YBWJ	YBWM	YBSI	YBTJ	YBWP	YBWS	YBWV	YBWW	YBXB
	Apr-Jun 2017	815	4.6	451	140	224	27.5	132	802	4.7	444	135	222	27.7	130
	Apr-Jun 2018	723	4.0	405	111	207	28.6	117	714	4.2	397	108	208	29.2	116
	Jul-Sep 2018	748	4.2	405	116	227	30.3	129	737	4.3	401	115	221	29.9	128
	Oct-Dec 2018	746	4.1	410	121	215	28.8	104	735	4.3	403	119	214	29.1	102
	Jan-Mar 2019	701	3.9	386	103	212	30.3	110	691	4.0	384	102	205	29.6	107
	Apr-Jun 2019	740	4.1	414	113	213	28.8	113	732	4.3	409	111	211	28.9	110
	Change on quarter	40	0.2	28	10	1	-1.4	3	41	0.2	26	9	7	-0.7	3
	Change %	5.7		7.3	9.9	0.6		2.8	6.0		6.7	8.5	3.3		2.6
	Change on year	17	0.1	9	2	6	0.2	-5	18	0.1	12	3	3	-0.3	-6
	Change %	2.4		2.3	1.6	3.1		-3.8	2.5		3.1	2.4	1.5		-5.4
Women		MGSE	MG SZ	MGYL	MGYN	MGYP	YBWK	YBWN	LF2J	LF2R	LF2Z	LF33	LF35	LF37	LF39
	Apr-Jun 2017	670	4.3	425	96	149	22.2	64	664	4.4	424	95	146	22.0	64
	Apr-Jun 2018	639	4.0	392	99	148	23.1	75	632	4.1	390	98	143	22.6	74
	Jul-Sep 2018	629	4.0	391	97	141	22.4	77	624	4.1	390	96	138	22.2	77
	Oct-Dec 2018	617	3.9	395	87	135	21.9	59	610	4.0	389	86	135	22.1	58
	Jan-Mar 2019	597	3.7	386	77	134	22.5	61	589	3.8	380	75	134	22.7	60
	Apr-Jun 2019	589	3.6	379	81	129	21.8	57	581	3.7	376	81	125	21.4	54
	Change on quarter	-9	-0.1	-6	3	-6	-0.6	-5	-8	-0.1	-4	6	-10	-1.3	-5
	Change %	-1.4		-1.6	4.4	-4.2		-7.6	-1.4		-1.1	7.4	-7.1		-8.5
	Change on year	-51	-0.4	-13	-19	-19	-1.2	-18	-51	-0.4	-15	-17	-19	-1.2	-20
	Change %	-7.9		-3.3	-18.8	-12.9		-24.5	-8.1		-3.8	-17.8	-12.9		-26.5
		16-17							18-24						
People		All	Rate (%) ¹	Up to 6 months	Over 6 and up to 12 months	All over 12 months	% over 12 months	All over 24 months	All	Rate (%) ¹	Up to 6 months	Over 6 and up to 12 months	All over 12 months	% over 12 months	All over 24 months
		15	16	17	18	19	20	21	22	23	24	25	26	27	28
		YBVH	YBVK	YBXD	YBXG	YBXJ	YBXM	YBXP	YBVN	YBVQ	YBXS	YBXV	YBXY	YBYB	YBYE
	Apr-Jun 2017	111	24.7	90	16	5	4.8	*	434	10.9	281	81	73	16.7	33
	Apr-Jun 2018	102	22.3	80	15	7	7.1	*	387	10.0	258	57	72	18.6	29
	Jul-Sep 2018	89	21.3	69	15	5	5.2	*	388	10.1	261	66	62	15.9	20
	Oct-Dec 2018	101	24.3	82	14	5	5.2	*	409	10.4	264	66	79	19.4	26
	Jan-Mar 2019	81	19.2	65	9	7	8.8	*	385	9.9	267	55	63	16.4	14
	Apr-Jun 2019	83	19.4	65	13	5	5.8	*	419	10.8	283	62	74	17.6	18
	Change on quarter	2	0.2	0	4	-2	-3.0	*	34	0.9	16	7	10	1.1	4
	Change %	2.5		0.7	41.2	-32.3		*	8.7		5.9	13.7	16.2		28.6
	Change on year	-19	-2.9	-15	-1	-2	-1.2	*	32	0.8	25	5	2	-1.0	-11
	Change %	-18.6		-18.9	-9.5	-32.9		*	8.1		9.8	8.0	2.3		-37.9
Men		YBVI	YBVL	YBXE	YBXH	YBXK	YBXN	YBXQ	YBVO	YBVR	YBXT	YBXW	YBXZ	YBYC	YBYF
	Apr-Jun 2017	63	27.3	51	9	*	*	*	254	12.2	151	54	50	19.6	25
	Apr-Jun 2018	51	22.3	37	9	5	9.8	*	226	11.1	146	33	47	20.8	17
	Jul-Sep 2018	50	23.4	38	9	*	*	*	220	10.8	142	38	41	18.4	13
	Oct-Dec 2018	51	24.8	39	8	*	*	*	245	11.8	145	40	60	24.6	23
	Jan-Mar 2019	45	21.8	36	*	5	10.9	*	236	11.7	157	37	42	17.8	10
	Apr-Jun 2019	47	22.4	37	7	*	*	*	260	12.9	166	40	53	20.5	14
	Change on quarter	2	0.6	2	*	*	*	*	23	1.2	9	3	11	2.7	5
	Change %	5.2		4.5	*	*	*	*	9.9		5.9	8.2	26.3		47.4
	Change on year	-4	0.1	0	-3	*	*	*	34	1.8	20	8	6	-0.3	-3
	Change %	-7.4		1.0	-27.1	*	*	*	15.0		13.7	23.5	13.2		-19.7
Women		YBVJ	YBVM	YBXF	YBXI	YBXL	YBXO	YBXR	YBVP	YBVS	YBXU	YBXX	YBYA	YBYD	YBYG
	Apr-Jun 2017	49	22.0	39	7	*	*	*	180	9.5	130	27	23	12.8	8
	Apr-Jun 2018	51	22.2	43	5	*	*	*	162	8.9	112	25	25	15.5	11
	Jul-Sep 2018	39	19.1	31	7	*	*	*	168	9.2	119	28	21	12.7	7
	Oct-Dec 2018	50	23.8	43	6	*	*	*	165	8.9	119	27	19	11.8	*
	Jan-Mar 2019	36	16.7	29	5	*	*	*	149	8.0	111	17	21	14.3	*
	Apr-Jun 2019	36	16.4	28	7	*	*	*	159	8.5	117	22	20	12.9	*
	Change on quarter	0	-0.3	-1	2	*	*	*	10	0.5	7	4	-1	-1.4	*
	Change %	-0.9		-4.0	33.1	*	*	*	6.9		6.0	25.6	-3.7		*
	Change on year	-15	-5.8	-16	1	*	*	*	-2	-0.3	5	-3	-5	-2.6	*
	Change %	-29.8		-35.9	20.1	*	*	*	-1.5		4.6	-12.3	-18.0		*

Relationship between columns: 1=3+4+5; 8=10+11+12; 15=17+18+19; 22=24+25+26.
¹Denominator = economically active for that age group.

Source: Labour Force Survey
Labour market statistics enquiries: labour.market@ons.gov.uk

UNEMPLOYMENT

9(2) Unemployment by age and duration

United Kingdom (thousands) seasonally adjusted

		25-49							50 and over						
		All	Rate(%) ¹	Up to 6 months	Over 6 and up to 12 months	All over 12 months	% over 12 months	All over 24 months	All	Rate(%) ¹	Up to 6 months	Over 6 and up to 12 months	All over 12 months	% over 12 months	All over 24 months
		1	2	3	4	5	6	7	8	9	10	11	12	13	14
		MGVI	MGXB	YBYH	YBYK	YBYN	YBYQ	YBYT	YBVT	YBVW	YBYW	YBYZ	YBZC	YBZF	YBZI
People	Apr-Jun 2017	640	3.4	366	87	187	29.2	100	299	2.9	139	52	108	36.1	64
	Apr-Jun 2018	593	3.1	328	93	171	28.9	100	280	2.7	131	45	104	37.1	64
	Jul-Sep 2018	608	3.2	330	87	191	31.4	114	292	2.8	135	46	110	37.7	71
	Oct-Dec 2018	569	3.0	330	85	155	27.1	71	284	2.7	130	43	111	39.0	65
	Jan-Mar 2019	546	2.9	312	76	158	28.9	89	286	2.7	127	40	118	41.4	68
	Apr-Jun 2019	558	2.9	320	76	162	28.9	91	268	2.5	125	42	102	38.0	60
	Change on quarter	13	0.1	8	0	4	0.1	2	-17	-0.2	-3	2	-16	-3.5	-8
	Change %	2.3		2.6	0.5	2.6		2.3	-6.0		-2.0	4.5	-13.8		-11.7
	Change on year	-34	-0.2	-8	-17	-10	0.0	-9	-12	-0.2	-6	-3	-2	0.9	-4
	Change %	-5.8		-2.3	-18.0	-5.8		-9.1	-4.1		-4.7	-7.6	-1.9		-6.3
Men		MGVJ	MGXC	YBYI	YBYL	YBYO	YBYR	YBYU	YBVU	YBVX	YBYX	YBZA	YBZD	YBZG	YBZJ
	Apr-Jun 2017	317	3.2	169	45	102	32.3	64	181	3.3	80	31	70	38.6	43
	Apr-Jun 2018	298	3.0	158	45	96	32.1	64	148	2.7	64	25	59	40.0	36
	Jul-Sep 2018	315	3.1	156	45	114	36.1	73	163	2.9	69	25	69	42.6	42
	Oct-Dec 2018	292	2.9	158	50	85	29.0	45	159	2.8	69	24	66	41.6	35
	Jan-Mar 2019	258	2.6	131	38	89	34.6	59	161	2.8	62	23	76	47.1	40
	Apr-Jun 2019	284	2.8	148	42	94	33.2	58	150	2.6	62	24	63	42.0	40
	Change on quarter	26	0.2	17	4	5	-1.4	-1	-12	-0.2	0	1	-13	-5.0	0
	Change %	9.9		13.0	9.8	5.3		-2.0	-7.1		0.4	5.1	-17.1		0.0
	Change on year	-14	-0.1	-9	-3	-2	1.0	-6	1	0.0	-2	-1	3	2.0	4
	Change %	-4.7		-6.0	-6.5	-1.6		-9.1	0.8		-2.7	-2.1	5.8		11.8
Women		MGVK	MGXD	YBYJ	YBYM	YBYP	YBYS	YBYV	YBVV	YBVY	YBYV	YBZB	YBZE	YBZH	YBZK
	Apr-Jun 2017	323	3.7	197	41	85	26.2	36	118	2.5	59	21	38	32.2	21
	Apr-Jun 2018	295	3.3	170	49	76	25.7	36	132	2.7	67	21	45	33.8	28
	Jul-Sep 2018	293	3.3	174	42	77	26.4	41	130	2.6	67	22	41	31.7	28
	Oct-Dec 2018	277	3.1	172	35	70	25.2	26	125	2.5	61	19	45	35.7	30
	Jan-Mar 2019	287	3.2	181	38	68	23.7	29	125	2.5	65	17	43	34.2	28
	Apr-Jun 2019	274	3.1	172	35	67	24.6	33	119	2.3	62	18	39	32.9	20
	Change on quarter	-13	-0.1	-9	-3	-1	0.9	3	-6	-0.2	-3	1	-3	-1.3	-8
	Change %	-4.5		-4.9	-8.7	-1.0		10.9	-4.5		-4.3	3.6	-8.0		-28.6
	Change on year	-20	-0.2	2	-14	-8	-1.1	-3	-13	-0.4	-4	-3	-5	-0.9	-8
	Change %	-6.9		1.0	-28.4	-11.0		-9.1	-9.7		-6.6	-14.4	-12.1		-29.1

Relationship between columns: 1=3+4+5; 8=10+11+12.

¹Denominator = economically active for that age group.

Source: Labour Force Survey

Labour market statistics enquiries: labour.market@ons.gov.uk

ECONOMIC ACTIVITY AND INACTIVITY

10 Economic activity by age

United Kingdom (thousands) seasonally adjusted

All aged 16 & over	16 - 64	16 - 17	18 - 24	25 - 34	35 - 49	50 - 64	65+
1	2	3	4	5	6	7	8

Economically active

People	MGSF	LF2K	YBZL	YBZO	YBZR	YBZU	LF3A	LFK8
Apr-Jun 2017	33,550	32,370	451	3,987	7,698	11,166	9,069	1,180
Apr-Jun 2018	33,749	32,504	459	3,866	7,730	11,184	9,265	1,244
Jul-Sep 2018	33,808	32,538	418	3,861	7,744	11,171	9,344	1,270
Oct-Dec 2018	33,960	32,652	415	3,924	7,778	11,182	9,352	1,309
Jan-Mar 2019	33,995	32,694	423	3,883	7,801	11,152	9,436	1,300
Apr-Jun 2019	34,140	32,761	430	3,882	7,831	11,143	9,475	1,379
Change on quarter	146	67	7	0	30	-9	39	79
Change %	0.4	0.2	1.6	0.0	0.4	-0.1	0.4	6.1
Change on year	392	257	-29	17	101	-41	209	135
Change %	1.2	0.8	-6.3	0.4	1.3	-0.4	2.3	10.8
Men	MGSG	YBSL	YBZM	YBZP	YBZS	YBZV	YBZY	YCAE
Apr-Jun 2017	17,825	17,107	229	2,081	4,130	5,890	4,777	718
Apr-Jun 2018	17,884	17,142	229	2,038	4,163	5,871	4,841	741
Jul-Sep 2018	17,949	17,173	215	2,035	4,163	5,882	4,879	776
Oct-Dec 2018	18,036	17,227	205	2,073	4,187	5,886	4,877	809
Jan-Mar 2019	17,976	17,192	207	2,026	4,179	5,860	4,920	784
Apr-Jun 2019	18,004	17,205	212	2,012	4,189	5,879	4,913	799
Change on quarter	28	13	5	-14	10	19	-7	15
Change %	0.2	0.1	2.2	-0.7	0.2	0.3	-0.1	1.9
Change on year	120	62	-18	-26	26	9	72	58
Change %	0.7	0.4	-7.8	-1.3	0.6	0.1	1.5	7.8
Women	MGSF	LF2L	YBZN	YBZQ	YBZT	YBZW	LF3B	LFK9
Apr-Jun 2017	15,725	15,263	221	1,906	3,568	5,276	4,292	462
Apr-Jun 2018	15,865	15,362	230	1,828	3,567	5,313	4,424	503
Jul-Sep 2018	15,859	15,365	202	1,826	3,582	5,290	4,465	494
Oct-Dec 2018	15,924	15,425	211	1,852	3,591	5,296	4,475	499
Jan-Mar 2019	16,019	15,502	216	1,856	3,622	5,292	4,516	516
Apr-Jun 2019	16,137	15,556	219	1,870	3,642	5,264	4,562	580
Change on quarter	118	54	2	14	20	-28	46	64
Change %	0.7	0.3	1.1	0.8	0.6	-0.5	1.0	12.4
Change on year	271	194	-11	43	75	-49	138	77
Change %	1.7	1.3	-4.9	2.3	2.1	-0.9	3.1	15.3

Economic activity rates (%)¹

People	MGWG	LF22	YCAC	YCAJ	YCAM	YCAP	LF2C	LFL2
Apr-Jun 2017	63.6	78.7	31.6	70.4	86.8	87.0	73.4	10.2
Apr-Jun 2018	63.7	78.8	32.9	69.0	86.6	87.5	73.9	10.6
Jul-Sep 2018	63.7	78.9	30.0	69.1	86.7	87.5	74.3	10.8
Oct-Dec 2018	63.9	79.1	29.8	70.5	87.0	87.7	74.1	11.0
Jan-Mar 2019	63.9	79.2	30.4	70.0	87.2	87.5	74.5	10.9
Apr-Jun 2019	64.1	79.3	30.9	70.3	87.4	87.5	74.5	11.5
Change on quarter	0.2	0.1	0.5	0.3	0.2	0.0	0.0	0.6
Change on year	0.4	0.5	-2.0	1.3	0.8	0.0	0.6	1.0
Men	MGWH	MGSP	YCAH	YCAK	YCAN	YCAQ	MGWQ	MGWT
Apr-Jun 2017	69.2	83.7	31.3	72.0	93.3	93.0	78.8	13.5
Apr-Jun 2018	69.0	83.6	32.1	71.2	93.2	93.1	78.7	13.7
Jul-Sep 2018	69.1	83.7	30.2	71.3	93.0	93.3	79.0	14.2
Oct-Dec 2018	69.4	83.9	28.7	72.9	93.4	93.5	78.7	14.8
Jan-Mar 2019	69.0	83.7	29.0	71.6	93.0	93.1	79.1	14.3
Apr-Jun 2019	69.0	83.7	29.7	71.3	93.1	93.5	78.7	14.5
Change on quarter	0.0	0.0	0.6	-0.2	0.1	0.4	-0.4	0.2
Change on year	0.1	0.1	-2.4	0.1	-0.1	0.5	0.1	0.8
Women	MGWI	LF23	YCAI	YCAL	YCAO	YCAR	LF2D	LFL3
Apr-Jun 2017	58.3	73.7	31.8	68.6	80.3	81.2	68.3	7.4
Apr-Jun 2018	58.6	74.1	33.7	66.7	80.1	82.1	69.3	7.9
Jul-Sep 2018	58.5	74.1	29.7	66.8	80.4	81.8	69.7	7.8
Oct-Dec 2018	58.7	74.3	31.0	68.0	80.6	82.0	69.6	7.8
Jan-Mar 2019	59.0	74.7	31.8	68.4	81.2	82.0	70.0	8.1
Apr-Jun 2019	59.3	74.9	32.2	69.2	81.6	81.7	70.4	9.0
Change on quarter	0.4	0.2	0.4	0.8	0.4	-0.3	0.4	1.0
Change on year	0.7	0.8	-1.5	2.6	1.6	-0.4	1.1	1.1

Relationship between columns: 1= 2+8; 2=3+4+5+6+7.

¹Denominator = all persons in the relevant age group.

Data source: Labour Force Survey

Labour market statistics enquiries: labour.market@ons.gov.uk

ECONOMIC ACTIVITY AND INACTIVITY

11 Economic inactivity: reasons

United Kingdom (thousands) seasonally adjusted

		Total aged 16-64	Economic inactivity by reason (aged 16 to 64)						Wanting/not wanting a job (aged 16 to 64)		
			Student	Looking after family / home	Temp sick	Long-term sick	Discouraged workers	Retired	Other	Does not want job	Wants a job ¹
		1	2	3	4	5	6	7	8	9	10
		LF2M	LF63	LF65	LF67	LF69	LFL8	LF6B	LF6D	LFL9	LFM2
People											
	Apr-Jun 2017	8,778	2,312	2,131	156	1,982	29	1,218	951	6,733	2,045
	Apr-Jun 2018	8,739	2,335	2,036	174	2,043	27	1,136	989	6,798	1,941
	Jul-Sep 2018	8,726	2,373	2,037	175	2,000	33	1,118	990	6,830	1,896
	Oct-Dec 2018	8,632	2,270	2,029	182	2,007	33	1,120	992	6,793	1,839
	Jan-Mar 2019	8,609	2,247	2,030	178	2,002	34	1,123	995	6,763	1,846
	Apr-Jun 2019	8,562	2,233	2,013	165	2,031	36	1,100	983	6,712	1,851
	Change on quarter	-47	-14	-17	-12	29	1	-22	-11	-52	5
	Change %	-0.5	-0.6	-0.8	-7.0	1.5	3.4	-2.0	-1.1	-0.8	0.3
	Change on year	-176	-102	-23	-9	-11	9	-35	-5	-87	-90
Change %	-2.0	-4.4	-1.1	-4.9	-0.5	33.1	-3.1	-0.5	-1.3	-4.6	
Men		YBSO	BEEX	BEAQ	BEDI	BEDL	YCFP	BEDR	BEDU	YBWA	YBWD
	Apr-Jun 2017	3,338	1,160	243	76	956	14	476	413	2,523	815
	Apr-Jun 2018	3,366	1,141	231	83	1,013	16	461	422	2,564	802
	Jul-Sep 2018	3,348	1,177	218	81	975	21	460	416	2,586	762
	Oct-Dec 2018	3,307	1,140	223	89	950	20	478	407	2,563	744
	Jan-Mar 2019	3,354	1,147	226	89	952	25	498	416	2,594	760
	Apr-Jun 2019	3,353	1,132	229	79	951	24	507	431	2,594	760
	Change on quarter	-1	-15	3	-10	-2	-1	9	15	-1	0
	Change %	0.0	-1.3	1.5	-11.3	-0.2	-4.9	1.9	3.6	0.0	0.0
	Change on year	-13	-9	-2	-3	-62	8	46	9	29	-42
Change %	-0.4	-0.8	-0.9	-4.1	-6.1	53.2	9.9	2.2	1.1	-5.3	
Women		LF2N	LF64	LF66	LF68	LF6A	LFM3	LF6C	LF6E	LFM4	LFM5
	Apr-Jun 2017	5,440	1,152	1,887	80	1,026	15	742	538	4,210	1,230
	Apr-Jun 2018	5,373	1,195	1,805	91	1,030	11	674	567	4,234	1,139
	Jul-Sep 2018	5,378	1,196	1,819	94	1,025	11	659	575	4,244	1,134
	Oct-Dec 2018	5,325	1,130	1,806	93	1,057	12	642	586	4,230	1,095
	Jan-Mar 2019	5,255	1,100	1,804	88	1,050	9	625	579	4,169	1,086
	Apr-Jun 2019	5,209	1,102	1,784	86	1,081	12	593	552	4,118	1,091
	Change on quarter	-46	1	-20	-2	31	2	-32	-27	-51	5
	Change %	-0.9	0.1	-1.1	-2.6	3.0	25.9	-5.1	-4.6	-1.2	0.4
	Change on year	-164	-93	-21	-5	51	1	-81	-15	-116	-47
Change %	-3.0	-7.8	-1.2	-5.6	4.9	5.1	-12.0	-2.6	-2.7	-4.2	
Percentage of economically inactive aged from 16 to 64 (%)											
People		LF6V	LF6X	LF6Z	LF73	LF75	LF77	LF79	LF7B	LF7D	LF7F
	Apr-Jun 2017	100	26.3	24.3	1.8	22.6	0.3	13.9	10.8	76.7	23.3
	Apr-Jun 2018	100	26.7	23.3	2.0	23.4	0.3	13.0	11.3	77.8	22.2
	Jul-Sep 2018	100	27.2	23.3	2.0	22.9	0.4	12.8	11.4	78.3	21.7
	Oct-Dec 2018	100	26.3	23.5	2.1	23.2	0.4	13.0	11.5	78.7	21.3
	Jan-Mar 2019	100	26.1	23.6	2.1	23.3	0.4	13.0	11.6	78.6	21.4
	Apr-Jun 2019	100	26.1	23.5	1.9	23.7	0.4	12.9	11.5	78.4	21.6
	Men		BEBP	BEEH	BEEK	BEEN	BEEQ	BEET	BEEW	BEEZ	BEAS
Apr-Jun 2017		100	34.8	7.3	2.3	28.6	0.4	14.3	12.4	75.6	24.4
Apr-Jun 2018		100	33.9	6.9	2.5	30.1	0.5	13.7	12.5	76.2	23.8
Jul-Sep 2018		100	35.1	6.5	2.4	29.1	0.6	13.7	12.4	77.2	22.8
Oct-Dec 2018		100	34.5	6.7	2.7	28.7	0.6	14.5	12.3	77.5	22.5
Jan-Mar 2019		100	34.2	6.7	2.7	28.4	0.7	14.9	12.4	77.3	22.7
Apr-Jun 2019		100	33.7	6.8	2.4	28.3	0.7	15.1	12.9	77.3	22.7
Women		LF6W	LF6Y	LF72	LF74	LF76	LF78	LF7A	LF7C	LF7E	LF7G
	Apr-Jun 2017	100	21.2	34.7	1.5	18.9	0.3	13.6	9.9	77.4	22.6
	Apr-Jun 2018	100	22.2	33.6	1.7	19.2	0.2	12.6	10.5	78.8	21.2
	Jul-Sep 2018	100	22.2	33.8	1.7	19.1	0.2	12.2	10.7	78.9	21.1
	Oct-Dec 2018	100	21.2	33.9	1.7	19.8	0.2	12.1	11.0	79.4	20.6
	Jan-Mar 2019	100	20.9	34.3	1.7	20.0	0.2	11.9	11.0	79.3	20.7
	Apr-Jun 2019	100	21.1	34.2	1.6	20.7	0.2	11.4	10.6	79.1	20.9

Relationship between columns : 1=2+3+4+5+6+7+8; 1=9+10.

Data Source: Labour Force Survey.

Labour market statistics enquiries: labour.market@ons.gov.uk

1. This series comprises those who say they would like a regular paid job, but who do not meet the internationally agreed definition of unemployment because they have not been looking for work in the last four weeks and/or they were unable to start working within two weeks.

ECONOMIC ACTIVITY AND INACTIVITY

12 Educational status, economic activity and inactivity of people aged from 16 to 24

April - June 2019

United Kingdom (thousands) seasonally adjusted

	All aged 16 to 24				In full-time education (FTE)				Not in full-time education (FTE) ¹			
	Total	Employed	Unemployed	Economically inactive	Total	Employed ²	Unemployed ²	Economically inactive	Total	Employed	Unemployed	Economically inactive
	1	2	3	4	5	6	7	8	9	10	11	12

Levels

People

16-17	1,392	347	83	961	1,204	258	62	885	187	89	21	77
18-24	5,522	3,463	419	1,640	1,810	617	85	1,108	3,712	2,846	334	532
16-24	6,914	3,810	502	2,601	3,014	875	147	1,993	3,900	2,935	356	609

Men

16-17	713	164	47	501	600	108	34	458	113	56	13	44
18-24	2,820	1,753	260	808	881	259	50	572	1,939	1,493	210	236
16-24	3,533	1,917	307	1,309	1,481	368	84	1,030	2,052	1,549	223	280

Women

16-17	679	183	36	460	604	150	28	427	74	33	8	33
18-24	2,702	1,711	159	832	929	358	35	536	1,773	1,353	124	296
16-24	3,381	1,894	195	1,292	1,533	507	63	963	1,848	1,386	132	329

Changes on quarter

People

16-17	0	5	2	-7	-12	-4	1	-9	12	9	1	1
18-24	-21	-34	34	-21	-26	-10	9	-25	5	-24	24	4
16-24	-22	-29	36	-28	-38	-14	10	-34	16	-15	26	6

Men

16-17	0	2	2	-5	-12	-8	0	-5	12	10	3	0
18-24	-11	-38	23	3	-17	-5	3	-16	6	-33	20	19
16-24	-11	-35	26	-1	-30	-12	3	-20	19	-23	23	19

Women

16-17	0	3	0	-3	0	4	1	-4	-1	-1	-1	2
18-24	-10	4	10	-24	-9	-5	6	-10	-2	9	4	-15
16-24	-11	6	10	-27	-8	-2	7	-14	-2	8	3	-13

Rates(%)³

People

16-17	24.9	19.4	69.1	21.4	19.3	73.4	47.5	19.5	41.0
18-24	62.7	10.8	29.7	34.1	12.1	61.2	76.7	10.5	14.3
16-24	55.1	11.6	37.6	29.0	14.3	66.1	75.3	10.8	15.6

Men

16-17	23.0	22.4	70.3	18.1	23.9	76.3	49.5	19.3	38.7
18-24	62.1	12.9	28.7	29.4	16.1	64.9	77.0	12.3	12.2
16-24	54.3	13.8	37.1	24.8	18.6	69.5	75.5	12.6	13.6

Women

16-17	26.9	16.4	67.8	24.8	15.6	70.7	44.5	19.7	44.5
18-24	63.3	8.5	30.8	38.5	8.9	57.7	76.3	8.4	16.7
16-24	56.0	9.3	38.2	33.1	11.0	62.8	75.0	8.7	17.8

Changes on quarter

People

16-17	0.4	0.2	-0.5	-0.1	0.4	0.0	1.8	-0.6	-1.8
18-24	-0.4	0.9	-0.3	-0.1	1.3	-0.5	-0.7	0.8	0.1
16-24	-0.2	0.8	-0.3	-0.1	1.0	-0.3	-0.7	0.7	0.1

Men

16-17	0.3	0.6	-0.6	-0.9	1.1	0.8	3.7	0.3	-4.8
18-24	-1.1	1.2	0.2	0.0	1.1	-0.5	-1.9	1.3	0.9
16-24	-0.8	1.2	0.1	-0.3	1.0	0.0	-1.8	1.3	0.8

Women

16-17	0.4	-0.3	-0.4	0.6	0.1	-0.8	-1.0	-1.8	2.5
18-24	0.4	0.5	-0.8	-0.2	1.6	-0.5	0.6	0.2	-0.8
16-24	0.4	0.4	-0.7	0.1	1.2	-0.6	0.5	0.1	-0.7

Relationship between columns: 1=5+9; 2=6+10; 3=7+11.

Source: Labour Force Survey

Labour market statistics enquiries: labour.market@ons.gov.uk

1. Not in full-time education includes people in part-time education and/or some form of training. Estimates of the number of young people who were not in employment, education or training ("NEET") cannot therefore be derived from this table. Estimates of young people who were NEET are published separately at:

<https://www.ons.gov.uk/employmentandlabourmarket/peopleinwork/unemployment/bulletins/youngpeoplenotineducationemploymentortrainingneet/latest>

2. People in full-time education are employed if they have a part-time job or unemployed if they are looking for part-time employment.

3. Denominator = all persons in the relevant age group for economically active, total in employment and economically inactive; economically active for unemployment.

EARNINGS

13 Average Weekly Earnings (nominal) - total pay¹

Standard Industrial Classification (2007)

Great Britain, seasonally adjusted

	Whole Economy (100%) ²			Private sector (82%) ²			Public sector (18%) ²		
	Weekly Earnings (£)	% changes year on year		Weekly Earnings (£)	% changes year on year		Weekly Earnings (£)	% changes year on year	
		Single month	3 month average ³		Single month	3 month average ³		Single month	3 month average ³
	KAB9	KAC2	KAC3	KAC4	KAC5	KAC6	KAC7	KAC8	KAC9
Jun 17	508	3.0	2.2	508	3.4	2.6	512	1.0	1.3
Apr 18	515	2.6	2.7	512	2.2	2.8	520	2.2	2.4
May 18 (r)	516	2.5	2.6	514	2.6	2.8	522	1.6	2.0
Jun 18	519	2.1	2.4	518	1.9	2.2	524	2.4	2.1
Jul 18	520	3.3	2.6	519	3.4	2.6	528	3.0	2.3 (r)
Aug 18	522	3.2	2.9 (r)	521	3.3	2.9	528	2.7	2.7
Sep 18	524	2.9	3.1	523	2.8	3.2	528	2.7	2.8
Oct 18	527	4.0	3.3	528	4.4	3.5	530	2.7	2.7
Nov 18	527	3.4	3.4	526	3.4	3.6	531	2.9	2.8
Dec 18	528	3.3	3.5	528	3.4	3.7	532	2.8	2.8
Jan 19	530	3.9	3.5	529	4.1	3.6	533	2.7	2.8
Feb 19	529	3.4	3.5	528	3.6	3.7	533	2.3	2.6
Mar 19	530	2.8	3.3	529	2.3	3.3	534	2.6	2.6
Apr 19	534	3.6	3.3 (r)	533	4.0	3.3	544	4.5	3.1
May 19 (r)	536	4.0	3.5	535	4.0	3.4	542	3.8	3.6
Jun 19 (p)	538	3.6	3.7	536	3.6	3.9	542	3.6	3.9

	Services, SIC 2007 sections G-S (85%) ²			Finance and business services, SIC 2007 sections K-N (22%) ²			Public sector excluding financial services (17%) ²		
	Weekly Earnings (£)	% changes year on year		Weekly Earnings (£)	% changes year on year		Weekly Earnings (£)	% changes year on year	
		Single month	3 month average ³		Single month	3 month average ³		Single month	3 month average ³
	K5BZ	K5C2	K5C3	K5C4	K5C5	K5C6	KAD8	KAD9	KAE2
Jun 17	494	3.3	2.4	655	4.1	2.0	506	1.0	1.3
Apr 18	500	2.5	2.6	656	2.8	2.4	517	2.3 (r)	2.5
May 18 (r)	500	2.3	2.5	653	0.9	1.5	518	1.6	2.2
Jun 18 (r)	503	1.9	2.3	657	0.3	1.3	519	2.6	2.2
Jul 18	505	3.4	2.6	665	3.3	1.5 (r)	524	3.2	2.5
Aug 18	507	3.3	2.9	665	2.3	2.0	524	2.8	2.8
Sep 18	508	3.0	3.2	667	1.6	2.4	524	2.7	2.9
Oct 18	514	4.5	3.6	675	4.3	2.7	526	2.7	2.7
Nov 18	512	3.5	3.7	677	4.3	3.4	527	3.0	2.8
Dec 18	513	3.4	3.8	675	3.2	3.9	528	2.9	2.9
Jan 19	515	4.1	3.7	680	5.0	4.1	529	2.8	2.9
Feb 19	514	3.5	3.7	675	3.4	3.8	529	2.3	2.6
Mar 19	514	2.9	3.5	678	3.1	3.8	530	2.3	2.5
Apr 19 (r)	518	3.6	3.3	682	3.9	3.5	540	4.5	3.0
May 19 (r)	521	4.0	3.5	687	5.3	4.1	538	3.9	3.6
Jun 19 (p)	522	3.8	3.8	688	4.6	4.6	536	3.3	3.9

	Manufacturing, SIC 2007 section C (8%) ²			Construction, SIC 2007 section F (5%) ²			Wholesaling, retailing, hotels & restaurants, SIC 2007 sections G & I (23%) ²		
	Weekly Earnings (£)	% changes year on year		Weekly Earnings (£)	% changes year on year		Weekly Earnings (£)	% changes year on year	
		Single month	3 month average ³		Single month	3 month average ³		Single month	3 month average ³
	K5CA	K5CB	K5CC	K5CD	K5CE	K5CF	K5CG	K5CH	K5CI
Jun 17	585	1.1	1.2	586	1.8	0.1	342	2.1	2.4
Apr 18 (r)	600	2.9	2.8	611	5.3	4.8	350	2.1	2.6
May 18 (r)	598	2.5	2.9	610	5.1	5.5	357	4.6	3.3
Jun 18 (r)	598	2.3	2.6	615	5.0	5.1	349	2.1	2.9
Jul 18	602	2.3	2.3	610	3.4	4.5	353	4.1	3.6
Aug 18	601	1.9	2.2 (r)	620	4.3	4.2	356	4.1	3.4 (r)
Sep 18	603	2.1	2.1	621	2.8	3.5	355	2.4	3.5
Oct 18	605	1.8	1.9	625	3.2	3.4	360	4.2	3.6
Nov 18	605	1.5	1.8	626	4.3	3.4	357	1.9	2.8
Dec 18	606	1.7	1.7	636	5.5	4.3	357	2.6	2.9
Jan 19	609	2.2	1.8	629	3.8	4.5	356	2.9	2.5
Feb 19	607	1.9	1.9	635	5.3	4.8	357	2.4	2.6
Mar 19	605	0.9	1.7	632	3.1	4.1	349	-0.7	1.5
Apr 19	615 (r)	2.4	1.8	651	6.5	5.0	357	1.9	1.2
May 19 (r)	613	2.5	1.9	648	6.2	5.3	363	1.5	0.9
Jun 19 (p)	612	2.3	2.4	646	5.0	5.9	362	3.8	2.4

Source: Monthly Wages & Salaries Survey

Earnings enquiries: 01633 456120

Email: earnings@ons.gov.uk

1. Estimates of total pay include bonuses but exclude arrears of pay.

2. The figure in brackets is the percentage of whole economy employment in that sector or industry for the latest time period.

3. The three month average figures are the changes in the average seasonally adjusted values for the three months ending with the relevant month compared with the same period a year earlier.

EARNINGS

14 Average Weekly Earnings (nominal) - bonus pay

Standard Industrial Classification (2007)

Great Britain, seasonally adjusted

Whole Economy (100%) ¹				Private sector (82%) ²			Public sector (18%) ²		
	Weekly Earnings (£)	% changes year on year		Weekly Earnings (£)	% changes year on year		Weekly Earnings (£)	% changes year on year	
		Single month	3 month average ²		Single month	3 month average ²		Single month	3 month average ²
	KAF4	KAF5	KAF6	KAF7	KAF8	KAF9	KAG2	KAG3	KAG4
Jun 17	34	19.5	4.1	43	19.3	4.3	2	-12.7	-10.8
Apr 18 (r)	31	1.9	1.0	38	2.3	1.3	2	-4.6	-17.4
May 18 (r)	30	-1.6	0.5	37	-1.0	1.0	2	-20.9	-24.2
Jun 18 (r)	32	-5.2	-1.8	39	-8.5	-2.7	2	-8.1	-11.5
Jul 18	32	3.7	-1.2 (r)	39	3.6	-2.2 (r)	3	19.9	-4.0 (r)
Aug 18	32	1.6	-0.1 (r)	38	1.5	-1.4 (r)	3	8.9	6.9
Sep 18	34	-5.3	-0.3	40	-5.3	-0.3	1	-48.7	-7.0
Oct 18	38	21.7	5.4	45	21.8	5.5	2	4.3	-11.4
Nov 18	33	0.1	4.9	39	0.9	5.2	2	-49.7	-34.8
Dec 18	33	1.9	7.7	39	2.4	8.2	2	-31.5	-30.3
Jan 19	33	8.1	3.2	40	8.1	3.8	4	104.3	-10.6
Feb 19	32	4.7	4.8	38	4.8	5.1	2	15.3	24.7
Mar 19	32	-0.4	4.1	38	-0.9	3.9	3	113.6	70.8
Apr 19 (r)	32	1.4	1.9	38	1.1	1.6	2	10.2	35.2
May 19 (r)	33	7.8	2.9	39	7.4	2.5	2	22.0	37.8
Jun 19 (p)	32	-0.7	2.8	38	-2.4	1.9	3	26.1	19.1

Services, SIC 2007 sections G-S (85%) ¹				Finance and business services, SIC 2007 sections K-N (22%) ²			Public sector excluding financial services (17%) ²		
	Weekly Earnings (£)	% changes year on year		Weekly Earnings (£)	% changes year on year		Weekly Earnings (£)	% changes year on year	
		Single month	3 month average ²		Single month	3 month average ²		Single month	3 month average ²
	K5CS	K5CT	K5CU	K5CV	K5CW	K5CX	KAH3	KAH4	KAH5
Jun 17	34	25.3	6.2	87	28.0	5.2	1	-28.4	-14.2
Apr 18 (r)	32	2.8	1.2	77	6.8	3.5	1	-4.1	-12.7
May 18 (r)	31	-2.0	0.2	67	-14.4	-3.7	1	-19.4	-17.9
Jun 18 (r)	32	-5.7	-1.7	77	-11.6	-6.9	1	-1.2	-8.7
Jul 18	34	6.1	-0.6 (r)	82	9.6	-5.9 (r)	2	34.1	3.1 (r)
Aug 18	33	0.8	0.3 (r)	80	-0.4	-1.3 (r)	2	8.1	13.3 (r)
Sep 18	34	-5.6	0.2	82	-16.1	-3.5	1	-46.3	-1.4
Oct 18	40	26.4	6.6	95	24.4	1.0	2	3.4	-10.3
Nov 18	34	1.4	6.8	87	16.5	6.1	1	-49.4	-34.2
Dec 18	34	0.4	9.1	78	-2.5	12.5	1	-22.4	-28.3
Jan 19	34	9.4	3.6	81	8.0	7.1	2	111.4	-9.0
Feb 19	33	4.7	4.7	76	2.2	2.4	2	52.6	41.3
Mar 19	32	0.3	4.7	77	1.4	3.9	2	125.2	93.7
Apr 19 (r)	32	-1.2	1.2	78	1.2	1.6	2	12.7	58.4
May 19 (r)	34	7.2	2.0	81	20.7	7.2	2	24.6	48.9
Jun 19 (p)	32	1.2	2.3	78	1.1	7.1	1	-15.2	7.3

Manufacturing, SIC 2007 section C (8%) ²				Construction, SIC 2007 section F (5%) ¹			Wholesaling, retailing, hotels & restaurants, SIC 2007 sections G & I (23%) ²		
	Weekly Earnings (£)	% changes year on year		Weekly Earnings (£)	% changes year on year		Weekly Earnings (£)	% changes year on year	
		Single month	3 month average ²		Single month	3 month average ²		Single month	3 month average ²
	K5D3	K5D4	K5D5	K5D6	K5D7	K5D8	K5D9	K5DA	K5DB
Jun 17	25	-3.3	-1.3	26	-3.3	-27.3	23	6.9	6.9
Apr 18 (r)	26	5.6	2.2	23	-9.2	-3.6	23	0.1	3.7
May 18 (r)	27	9.2	7.9	23	-15.2	-2.0	29	22.4	12.0
Jun 18 (r)	25	-0.8	4.6	24	-5.1	-10.0	20	-10.8	4.1
Jul 18	26	-6.8	0.2	21	-18.2	-12.9 (r)	21	-5.2	2.5 (r)
Aug 18	24	-4.7	-4.2	32	18.2	-1.5 (r)	21	-9.5	-8.5 (r)
Sep 18	25	-3.2	-5.0	30	0.0	0.2	21	-9.8	-8.2
Oct 18	26	-9.3	-5.9	34	6.3	7.7	25	9.2	-3.5
Nov 18	24	-16.8	-10.0	27	-7.5	-0.2	22	-15.6	-5.9
Dec 18	26	4.0	-7.9	29	37.5	9.5	22	-3.4	-3.8
Jan 19	25	1.5	-4.3	26	0.0	7.6	22	-0.2	-6.9
Feb 19	23	-9.6	-1.4	30	20.3	18.1	22	0.0	-1.2
Mar 19	24	-6.9	-5.1	28	-2.6	5.3	19	-21.7	-7.8
Apr 19 (r)	27	3.2	-4.4	38	61.8	24.2	21	-11.0	-11.2
May 19 (r)	26	-3.7	-2.5	30	30.3	27.3	25	-13.3	-15.3
Jun 19 (p)	25	3.6	1.0	24	-1.0	29.9	23	14.6	-4.8

Source: Monthly Wages & Salaries Survey

Earnings enquiries: 01633 456120

Email: earnings@ons.gov.uk

1. The figure in brackets is the percentage of whole economy employment in that sector or industry for the latest time period.

2. The three month average figures are the changes in the average seasonally adjusted values for the three months ending with the relevant month compared with the same period a year earlier.

EARNINGS

15 Average Weekly Earnings (nominal) - regular pay¹

Standard Industrial Classification (2007)

Great Britain, seasonally adjusted

Whole Economy (100%) ²				Private sector (82%) ²				Public sector (18%) ²			
	Weekly Earnings (£)	% changes year on year		Weekly Earnings (£)	% changes year on year		Weekly Earnings (£)	% changes year on year			
		Single month	3 month average ³		Single month	3 month average ³		Single month	3 month average ³		
	KAI7	KAI8	KAI9	KAJ2	KAJ3	KAJ4	KAJ5	KAJ6	KAJ7		
Jun 17	473	2.0	2.1	465	2.3	2.3	509	1.2	1.4		
Apr 18	(r) 483	2.6	2.9	476	2.6	3.0	518	2.3	2.5		
May 18	(r) 485	2.6	2.8	478	2.8	2.9	520	1.7	2.2		
Jun 18	(r) 486	2.7	2.7	478	2.8	2.8	522	2.5	2.2		
Jul 18	489	3.2	2.9	481	3.3	3.0	525	2.9	2.4		
Aug 18	491	3.3	3.1	483	3.4	3.2	525	2.6	2.7		
Sep 18	491	3.1	3.2	484	3.2	3.3	526	2.8	2.8		
Oct 18	494	3.5	3.3	487	3.7	3.4	528	2.7	2.7		
Nov 18	495	3.5	3.4	487	3.5	3.5	530	3.1	2.9		
Dec 18	496	3.4	3.4	488	3.4	3.5	530	2.9	2.9		
Jan 19	498	3.7	3.5	491	3.9	3.6	531	2.7	2.9		
Feb 19	497	3.2	3.4	490	3.5	3.6	530	2.2	2.6		
Mar 19	498	3.1	3.3	491	3.3	3.5	531	2.2	2.3		
Apr 19	503	4.0	3.4	494	3.9	3.6	542	4.5	3.0		
May 19	503	3.8	3.6	496	3.8	3.7	539 (r)	3.8	3.5		
Jun 19	(p) 505	3.9	3.9	498	4.0	3.9	539	3.3	3.8		
Services, SIC 2007 sections G-S (85%) ²				Finance and business services, SIC 2007 sections K-N (22%) ²				Public sector excluding financial services (17%) ²			
	Weekly Earnings (£)	% changes year on year		Weekly Earnings (£)	% changes year on year		Weekly Earnings (£)	% changes year on year			
		Single month	3 month average ³		Single month	3 month average ³		Single month	3 month average ³		
	K5DL	K5DM	K5DN	K5DO	K5DP	K5DQ	KAK6	KAK7	KAK8		
Jun 17	457	2.1	2.1	569	1.8	1.7	505	1.2	1.4		
Apr 18	(r) 467	2.6	2.8	580	2.5	2.8	515	2.3	2.5		
May 18	(r) 468	2.5	2.7	581	2.2	2.5	516	1.8	2.2		
Jun 18	(r) 469	2.6	2.6	581	2.2	2.3	518	2.6	2.2		
Jul 18	472	3.2	2.8	586	2.7	2.4	521	3.0	2.4		
Aug 18	475	3.4	3.1	586	2.4	2.4	522	2.7	2.7		
Sep 18	475	3.3	3.3	589	2.8	2.6	523	2.9	2.8		
Oct 18	478	3.7	3.5	593	3.5	2.9	525	2.7	2.8		
Nov 18	478	3.5	3.5	594	3.6	3.3	526	3.1	2.9		
Dec 18	479	3.6	3.6	596	3.9	3.7	526	2.9	2.9		
Jan 19	481	3.8	3.6	600	4.6	4.0	527	2.7	2.9		
Feb 19	480	3.2	3.5	600	3.3	3.9	527	2.2	2.6		
Mar 19	482	3.3	3.5	604	4.4	4.1	527	2.1	2.4		
Apr 19	486	4.0	3.5	604	4.2	4.0	538 (r)	4.6	3.0		
May 19	(r) 486	3.9	3.7	606	4.3	4.3	536	3.8	3.5		
Jun 19	(p) 488	4.1	4.0	611	5.0	4.5	536	3.3	3.9		
Manufacturing, SIC 2007 section C (8%) ²				Construction, SIC 2007 section F (5%) ²				Wholesaling, retailing, hotels & restaurants, SIC 2007 sections G & I (23%) ²			
	Weekly Earnings (£)	% changes year on year		Weekly Earnings (£)	% changes year on year		Weekly Earnings (£)	% changes year on year			
		Single month	3 month average ³		Single month	3 month average ³		Single month	3 month average ³		
	K5DU	K5DV	K5DW	K5DX	K5DY	K5DZ	K5E2	K5E3	K5E4		
Jun 17	561	1.3	1.2	560	1.9	1.7	320	1.9	2.1		
Apr 18	(r) 573	2.6	2.7	586	5.3	5.1	327	2.2	2.5		
May 18	(r) 572	2.2	2.5	589	5.6	5.7	329	3.0	2.6		
Jun 18	(r) 574	2.4	2.4	590	5.4	5.4	329	2.9	2.7		
Jul 18	574	2.7	2.4	588	4.3	5.1	332	4.6	3.5		
Aug 18	576	2.0	2.3	590	4.0	4.5 (r)	335	4.8	4.1		
Sep 18	578	2.2	2.3	590	2.9	3.7	333	3.0	4.1		
Oct 18	579	2.1	2.1	591	3.0	3.3	335	3.8	3.9		
Nov 18	580	2.0	2.1	599	4.8	3.6	334	3.1	3.3		
Dec 18	580	1.6	1.9	603	3.8	3.9	335	3.0	3.3		
Jan 19	584	2.2	1.9	602	3.9	4.2	334	3.1	3.1		
Feb 19	585	2.2	2.0	605	4.9	4.2	334	2.5	2.9		
Mar 19	585	2.2	2.2	604	3.2	4.0	333	2.0	2.5		
Apr 19	(r) 586	2.3	2.3	616	5.2	4.4	337	3.0	2.5		
May 19	(r) 587	2.6	2.4	620	5.2	4.5	339	3.0	2.6		
Jun 19	(p) 586	2.2	2.4	621	5.2	5.2	340	3.3	3.1		

Source: Monthly Wages & Salaries Survey

Earnings enquiries: 01633 456120

Email: earnings@ons.gov.uk

1. Estimates of regular pay exclude bonuses and arrears of pay.

2. The figure in brackets is the percentage of whole economy employment in that sector or industry for the latest time period.

3. The three month average figures are the changes in the average seasonally adjusted values for the three months ending with the relevant month compared with the same period a year earlier.

EARNINGS

16 Average Weekly Earnings - real and nominal¹

Great Britain whole economy, seasonally adjusted

Total pay (including bonuses) ¹						
	Nominal earnings			Real earnings ³		
	Nominal Weekly Earnings (£)	% changes year on year		Weekly Earnings at constant 2015 prices (£)	% changes year on year	
		Single month	3 month average ²		Single month	3 month average ²
	KAB9	KAC2	KAC3	A3WX	A3WV	A3WW
Jun 17	508	3.0	2.2	491	0.5	-0.5
Apr 18	515	2.6	2.7	490	0.3	0.3
May 18	516	2.5	2.6	489	0.1 (r)	0.3
Jun 18	519	2.1	2.4	490	0.0 (r)	0.1
Jul 18	520	3.3	2.6	491	0.9	0.3
Aug 18	522	3.2	2.9 (r)	492	0.8	0.6 (r)
Sep 18	524	2.9	3.1	493	0.6	0.8
Oct 18	527	4.0	3.3	497	1.9	1.1
Nov 18	527	3.4	3.4	495	1.2	1.3
Dec 18	528	3.3	3.5	496	1.3	1.5
Jan 19	530	3.9	3.5	497	2.1	1.5
Feb 19	529	3.4	3.5	495	1.5	1.6
Mar 19	530	2.8	3.3	495	0.7	1.4
Apr 19	534	3.6	3.3 (r)	497	1.6	1.3
May 19 (r)	536	4.0	3.5	499	2.1	1.5
Jun 19 (p)	538	3.6	3.7	499	1.7	1.8

Regular pay (excluding bonuses)						
	Nominal earnings			Real earnings ³		
	Nominal Weekly Earnings (£)	% changes year on year		Weekly Earnings at constant 2015 prices (£)	% changes year on year	
		Single month	3 month average ²		Single month	3 month average ²
	KAI7	KAI8	KAI9	A2FC	A2F9	A2FA
Jun 17	473	2.0	2.1	458	-0.4	-0.4
Apr 18	483	2.6	2.9	459	0.3	0.5
May 18	485	2.6	2.8	460	0.3	0.4
Jun 18	486	2.7 (r)	2.7	460	0.4	0.3
Jul 18	489	3.2	2.9	462	0.8	0.5
Aug 18	491	3.3	3.1	462	0.9	0.7
Sep 18	491	3.1	3.2	463	0.9	0.9
Oct 18	494	3.5	3.3	464	1.3	1.0
Nov 18	495	3.5	3.4	464	1.3	1.2
Dec 18	496	3.4	3.4	465	1.3	1.3
Jan 19	498	3.7	3.5	467	1.9	1.5
Feb 19	497	3.2	3.4	466	1.4	1.5
Mar 19	498	3.1	3.3	466	1.2	1.5
Apr 19	503	4.0	3.4	468	2.0	1.5
May 19	503	3.8	3.6	468	1.9	1.7
Jun 19 (p)	505	3.9	3.9	469	2.0	1.9

Source: Monthly Wages & Salaries Survey

Earnings enquiries: 01633 456120

Email: earnings@ons.gov.uk

1. Estimates of total pay include bonuses but exclude arrears of pay.

2. The three month average figures are the changes in the average seasonally adjusted values for the three months ending with the relevant month compared with the same period a year earlier.

3. Estimates of real earnings are calculated by deflating the nominal earnings estimates by the Consumer Prices Index including owner occupiers' housing costs (CPIH), our preferred measure of consumer price inflation.

17 International comparisons of employment and unemployment

Employment rates as published by EUROSTAT: (not seasonally adjusted)					Unemployment rates as published by EUROSTAT on 31 July 2019 (seasonally adjusted)					
		Latest period	Employment rate (%) ^{1 2}	Change on year %			Latest Period	Unemployment rate (%) ³	Change on month %	Change on year %
European Union (EU)					European Union (EU)					
Austria	YXSN	Jan-Mar 19	72.7	0.7	Austria	ZXDS	Jun 19	4.5	-0.1	-0.4
Belgium	YXSO	Jan-Mar 19	64.5	0.6	Belgium	ZXDI	Jun 19	5.6	0.1	-0.5
Bulgaria	A495	Jan-Mar 19	68.3	1.8	Bulgaria	A492	Jun 19	4.4	-0.1	-0.8
Croatia	GUMI	Jan-Mar 19	61.2	2.2	Croatia	GUMJ	Jun 19	7.1	0.0	-1.5
Cyprus	A4AC	Jan-Mar 19	69.1	2.9	Cyprus	A4AN	Jun 19	6.5	-0.1	-1.8
Czech Republic	A4AD	Jan-Mar 19	75.0	0.8	Czech Republic	A4AO	Jun 19	1.9	-0.2	-0.4
Denmark	YXSP	Jan-Mar 19	74.9	0.5	Denmark	ZXDJ	Jun 19	4.8	-0.1	-0.2
Estonia	A4AE	Jan-Mar 19	74.1	0.5	Estonia	A4AP	May 19	5.0	0.0	0.0
Finland	YXSQ	Jan-Mar 19	71.4	1.3	Finland	ZXDU	Jun 19	6.6	0.0	-0.9
France	YXSR	Jan-Mar 19	65.1	0.3	France	ZXDN	Jun 19	8.7	0.1	-0.3
Germany	YXSS	Jan-Mar 19	76.3	0.9	Germany	ZXDK	Jun 19	3.1	0.0	-0.3
Greece	YXST	Jan-Mar 19	55.0	1.7	Greece	ZXDL	Apr 19	17.6	-0.6	-2.2
Hungary	A4AF	Jan-Mar 19	69.9	1.2	Hungary	A4AQ	May 19	3.4	0.0	-0.3
Ireland	YXSU	Jan-Mar 19	69.3	1.4	Ireland	ZXDO	Jul 19	4.6	0.1	-1.2
Italy	YXSV	Jan-Mar 19	58.2	0.6	Italy	ZXDP	Jun 19	9.7	-0.1	-1.1
Latvia	A4AG	Jan-Mar 19	71.4	0.5	Latvia	A4AR	Jun 19	6.5	0.1	-1.1
Lithuania	A4AH	Jan-Mar 19	72.5	1.9	Lithuania	A4AS	Jun 19	5.7	-0.1	-0.5
Luxembourg	YXSW	Jan-Mar 19	67.6	0.4	Luxembourg	ZXDQ	Jun 19	5.8	0.1	0.2
Malta	A4AI	Jan-Mar 19	72.2	2.5	Malta	A4AT	Jun 19	3.4	-0.1	-0.5
Netherlands	YXSX	Jan-Mar 19	77.7	1.5	Netherlands	ZXDR	Jun 19	3.4	0.1	-0.5
Poland	A4AJ	Jan-Mar 19	67.2	0.6	Poland	A4AU	Jun 19	3.8	0.0	0.0
Portugal	YXSY	Jan-Mar 19	69.9	1.0	Portugal	ZXDT	Jun 19	6.7	0.1	-0.2
Romania	A494	Jan-Mar 19	64.2	1.1	Romania	A48Z	Jun 19	4.0	0.1	-0.2
Slovak Republic	A4AK	Jan-Mar 19	68.6	1.5	Slovak Republic	A4AV	Jun 19	5.4	0.0	-1.3
Slovenia	A4AL	Jan-Mar 19	71.3	1.6	Slovenia	A4AW	Jun 19	4.4	0.0	-0.9
Spain	YXSZ	Jan-Mar 19	62.5	1.4	Spain	ZXDM	Jun 19	14.0	-0.1	-1.1
Sweden	YXTA	Jan-Mar 19	76.7	0.5	Sweden ⁵	ZXDV	Jun 19	6.6	0.2	0.3
United Kingdom (*)	ANZ6	Jan-Mar 19	75.0	0.4	United Kingdom (*)	ZXDW	Apr 19	3.7	0.0	-0.3
Total EU⁴	A496	Jan-Mar 19	68.6	0.8	Total EU⁴	A493	Jun 19	6.3	0.0	-0.5
Eurozone ⁴	YXTC	Jan-Mar 19	67.3	0.8	Eurozone ⁴	ZXDH	Jun 19	7.5	-0.1	-0.7
Employment rates published by the OECD (seasonally adjusted)					Unemployment rates as published by national statistical offices (seasonally adjusted)					
Canada	A48O	Apr-Jun 19	74.5	0.8	Canada	ZXDZ	Jul 19	5.7	0.2	-0.2
Japan	A48P	Apr-Jun 19	77.6	0.8	Japan	ZXDY	Jun 19	2.3	-0.1	-0.2
United States	A48Q	Apr-Jun 19	71.1	0.5	United States	ZXDX	Jul 19	3.7	0.0	-0.2

Sources: EUROSTAT, OECD, national statistical offices.
Labour market statistics enquiries: labour.market@ons.gov.uk

(*) Note: The UK rates shown in this table are as published by EUROSTAT (the EUs statistical office). See Table 1 for the latest rates for the UK as published by ONS.

- All employment rates shown in this table are for those aged from 15 to 64 except for the rate for the United States published by OECD which are for those aged from 16 to 64.
- The employment rates for the EU are published by EUROSTAT and are not seasonally adjusted. EUROSTAT do not publish seasonally adjusted (SA) employment rates but SA rates for some EU countries are published by OECD. These OECD employment rates are available on our website at [dataset A10](#).
- Unemployment rates published by EUROSTAT for most EU countries (but not for the UK), are calculated by extrapolating from the most recent LFS data using monthly registered unemployment data. A standard population basis (15-74) is used by EUROSTAT except for Spain, Italy and the UK (16-74). The unemployment rate for the US is based on those aged 16 and over, but the rates for Canada and Japan are for those aged 15 and over. All unemployment rates shown in this table are seasonally adjusted.
- The "Total EU" series consist of all 28 EU countries. The Eurozone figures consist of the following EU countries: Austria, Belgium, Cyprus, Estonia, Finland, France, Germany, Greece, Ireland, Italy, Latvia, Lithuania, Luxembourg, Malta, Netherlands, Portugal, Slovak Republic, Slovenia and Spain.
- The EU unemployment rates are as published on the EUROSTAT database. For Sweden the rates on the database differ from those shown in the EUROSTAT News Release published on 31 July 2019. This is because the figures for Sweden on the database are seasonally adjusted estimates but the figures for Sweden shown in the News Release are the trend component.

18 Labour disputes

United Kingdom, not seasonally adjusted

		Working days lost (thousands) ^{1,2}	Working days lost in the Public Sector (thousands) ^{1,2}	Working days lost in the Private Sector (thousands) ^{1,2}	Number of stoppages ³	Number of stoppages in the Public Sector	Number of stoppages in the Private Sector	Workers involved (thousands) ^{1,3}
		1	2	3	4	5	6	7
		BBFW	F8XZ	F8Y2	BLUU	F8Y3	F8Y4	BLUT
2017	June	2	1	1	11	7	4	2
2018	June	7	1	7	15	5	10	3
	July	17	10	7	9	5	4	5
	August	4	1	3	11	5	6	2
	September	4	0	4	11	2	9	2
	October	9	2	7	11	4	7	2
	November	16	9	7	16	5	11	9
	December	11	0	11	8	1	7	3
2019	January	11	1	11	10	2	8	6
	February	7	2	5	11	5	6	6
	March	9	1	8	14	6	8	5
	April	2	1	2	8	1	7	1
	May	10	1	10	14	2	12	5
	June (p)	12	1	12	24	5	19	3
12 month totals:								
	Jun 18	371	21	351	77	26	51	38
	Jun 19 (p)	102	19	82	94	28	66	23

Relationship between columns 1=2+3; 4=5+6

Data source: ONS Labour Disputes Survey
Labour disputes enquiries 01633 455400

- Estimates of working days lost and workers involved are shown to the nearest thousand. Unrounded estimates of less than 500 therefore round to zero.
- Due to rounding the working days lost for the public and private sectors may not add up to the total working days lost.
- The latest 12 month cumulative totals for the figures in these columns will not necessarily equal the sum of the 12 months as some disputes continue for over one month. These disputes appear in each month's data, but only once in the total.

VACANCIES

19 Vacancies¹ by size of business

United Kingdom (thousands), seasonally adjusted

		Number of employees					
		All Vacancies	1-9	10-49	50-249	250-2499	2500+
		AP2Y	ALY5	ALY6	ALY7	ALY8	ALY9
Levels							
May-Jul 2017		782	120	117	115	148	281
May-Jul 2018	(r)	840	135	119	120	173	294
Jun-Aug 2018		842	129	122	120	176	296
Jul-Sept 2018		845	128	124	120	175	299
Aug-Oct 2018		852	124	131	118	177	302
Sept-Nov 2018		851	122	129	118	181	302
Oct-Dec 2018		852	125	128	118	180	301
Nov-Jan 2019		861	132	129	117	182	301
Dec-Feb 2019		849	130	125	115	179	300
Jan-Mar 2019		846	124	125	116	183	298
Feb-Apr 2019	(r)	840	124	120	115	186	295
Mar-May 2019	(r)	834	130	116	111	185	292
Apr-Jun 2019	(r)	824	118	118	114	184	291
May-Jul 2019	(p)	820	114	119	114	184	289
Change on quarter	*	-20	-10	-1	-1	-2	-6
Change %	*	-2.3	-8.2	-0.8	-0.7	-1.0	-2.0
Change on year		-20	-21	0	-6	11	-5
Change %		-2.4	-15.3	-0.1	-4.9	6.5	-1.6

1. Excludes Agriculture, Forestry and Fishing.

Source: ONS Vacancy Survey

Vacancy Survey enquiries: vacancy.survey@ons.gov.uk, 01633 456777

* Change on previous non-overlapping three month rolling average time period.

20 Vacancies¹ and Unemployment

United Kingdom (thousands), seasonally adjusted

		All Vacancies ¹	Unemployment ²	Number of unemployed people per vacancy
		AP2Y	MGSC	JPC5
Levels				
Apr-Jun 2017		786	1,485	1.9
Apr-Jun 2018		836	1,362	1.6
Jul-Sep 2018		845	1,377	1.6
Oct-Dec 2018		852	1,363	1.6
Jan-Mar 2019		846	1,298	1.5
Apr-Jun 2019	(r)	824	1,329	1.6
Change on quarter		-22	31	0.1
Change %		-2.6	2.4	
Change on year		-12	-33	0.0
Change %		-1.4	-2.4	

Source: ONS Vacancy Survey/ Labour Force Survey

Vacancy Survey enquiries: vacancy.survey@ons.gov.uk, 01633 456777

1. Excludes Agriculture, Forestry and Fishing.

2. Unemployment estimates are produced from the Labour Force Survey (LFS) and are always one period behind the ONS Vacancy Survey estimates. This table therefore shows estimates for the same periods as shown in table 1 (which shows LFS estimates).

VACANCIES

21 Vacancies by industry

Standard Industrial Classification (2007)

United Kingdom (thousands), seasonally adjusted

SIC 2007 sections	All vacancies ¹	Mining & quarrying	Manu- facturing	Electricity, gas, steam & air conditioning supply ²	Water supply, sewerage, waste & remediation activities	Construction	Wholesale & retail trade; repair of motor vehicles and motor cycles	Transport & storage	Accommoda- tion & food service activities	Information & communica- tion
	B-S	B	C	D	E	F	G	H	I	J
	AP2Y	JP9H	JP9I	JP9J	JP9K	JP9L	JP9M	JP9N	JP9O	JP9P
Levels (thousands)										
May-Jul 2017	782	1	51	4	3	28	139	32	93	41
May-Jul 2018 (r)	840	1	60	4	4	26	133	42	93	48
Jun-Aug 2018	842	1	61	4	4	27	135	40	93	46
Jul-Sept 2018	845	1	61	3	4	26	138	41	93	48
Aug-Oct 2018	852	1	61	3	4	26	138	39	94	48
Sept-Nov 2018	851	1	61	3	4	26	139	40	92	50
Oct-Dec 2018	852	1	62	3	4	27	139	39	93	51
Nov-Jan 2019	861	1	64	3	4	29	138	43	91	53
Dec-Feb 2019	849	1	61	3	4	28	138	44	89	52
Jan-Mar 2019	846	1	61	3	4	28	138	43	92	50
Feb-Apr 2019 (r)	840	2	56	4	4	27	138	42	93	48
Mar-May 2019 (r)	834	2	57	4	4	27	135	42	93	47
Apr-Jun 2019 (r)	824	2	55	4	5	27	133	42	88	45
May-Jul 2019 (p)	820	2	53	4	5	26	132	40	90	44
Change on quarter *	-20	0	-3	0	1	-1	-7	-2	-3	-4
Change % *	-2.3	6.7	-5.7	-2.8	17.9	-4.5	-4.8	-5.7	-3.6	-8.4
Change on year	-20	1	-6	0	0	0	-1	-2	-3	-4
Change %	-2.4	45.5	-10.6	0.0	7.0	-1.5	-0.9	-3.9	-3.6	-8.2
	AP2Z	JPA2	JPA3	JPA4	JPA5	JPA6	JPA7	JPA8	JPA9	JPB2
Vacancies per 100 employee jobs										
May-Jul 2017	2.6	1.9	2.1	3.2	1.5	1.9	3.0	2.2	4.2	3.2
May-Jul 2018 (r)	2.8	2.2	2.4	2.5	2.0	1.7	2.9	2.9	4.1	3.5
Jun-Aug 2018	2.8	2.2	2.4	2.5	2.0	1.8	2.9	2.8	4.1	3.3
Jul-Sept 2018	2.8	2.2	2.4	2.3	1.9	1.7	3.0	2.9	4.1	3.5
Aug-Oct 2018	2.8	2.4	2.4	2.3	1.8	1.7	3.0	2.7	4.2	3.5
Sept-Nov 2018	2.8	2.6	2.4	2.3	1.8	1.8	3.0	2.8	4.1	3.7
Oct-Dec 2018	2.8	2.6	2.5	2.2	1.8	1.8	3.0	2.7	4.1	3.7
Nov-Jan 2019	2.9	2.6	2.6	2.2	1.9	1.9	3.0	3.0	4.0	3.8
Dec-Feb 2019	2.8	2.6	2.4	2.5	1.9	1.8	3.0	3.1	3.9	3.8
Jan-Mar 2019	2.8	2.8	2.4	2.5	1.9	1.8	3.0	3.0	4.1	3.6
Feb-Apr 2019 (r)	2.8	3.0	2.2	2.6	1.8	1.8	3.0	3.0	4.1	3.5
Mar-May 2019 (r)	2.8	3.2	2.3	2.5	1.9	1.8	2.9	3.0	4.1	3.4
Apr-Jun 2019 (r)	2.7	3.2	2.2	2.7	2.1	1.8	2.9	3.0	3.9	3.3
May-Jul 2019 (p)	2.7	3.2	2.1	2.5	2.1	1.7	2.8	2.8	4.0	3.2
Change on quarter *	-0.1	0.2	-0.1	-0.1	0.3	-0.1	-0.1	-0.2	-0.2	-0.3
Change on year	-0.1	1.0	-0.3	0.0	0.1	0.0	0.0	-0.1	-0.2	-0.3

SIC 2007 sections	Financial & insurance activities	Real estate activities ²	Professional scientific & technical activities	Administrative & support service activities	Public admin & defence; compulsory social security	Education	Human health & social work activities	Arts, entertainment & recreation	Other service activities	Total services
	K	L	M	N	O	P	Q	R	S	G-S
	JP9Q	JP9R	JP9S	JP9T	JP9U	JP9V	JP9W	JP9X	JP9Y	JP9Z
Levels (thousands)										
May-Jul 2017	37	11	68	55	16	49	119	16	20	695
May-Jul 2018 (r)	39	11	72	57	21	51	133	21	27	746
Jun-Aug 2018	39	11	75	57	21	50	134	19	27	745
Jul-Sept 2018	38	12	78	58	22	50	130	17	26	750
Aug-Oct 2018	38	11	82	58	24	49	131	20	26	756
Sept-Nov 2018	38	12	79	54	24	50	130	23	25	756
Oct-Dec 2018	38	13	77	52	23	51	131	23	25	754
Nov-Jan 2019	37	15	80	53	21	49	132	23	25	759
Dec-Feb 2019	36	14	81	50	20	50	132	22	25	751
Jan-Mar 2019	34	12	80	49	20	51	134	23	23	749
Feb-Apr 2019 (r)	34	11	79	51	21	52	135	22	21	747
Mar-May 2019 (r)	33	10	79	50	22	52	137	21	21	741
Apr-Jun 2019 (r)	34	12	78	50	22	53	137	21	19	733
May-Jul 2019 (p)	33	11	78	49	22	53	138	24	19	732
Change on quarter *	0	0	-1	-3	1	1	3	3	-3	-15
Change % *	-0.6	-1.9	-0.8	-5.1	4.2	1.2	2.5	11.9	-12.7	-2.1
Change on year	-5	0	6	-8	1	2	5	3	-9	-14
Change %	-13.5	-1.9	8.7	-14.3	6.7	3.8	3.8	15.6	-31.5	-1.9
	JPB3	JPB4	JPB5	JPB6	JPB7	JPB8	JPB9	JPC2	JPC3	JPC4
Vacancies per 100 employee jobs										
May-Jul 2017	3.5	2.1	2.7	2.1	1.3	1.9	3.0	2.1	3.2	2.7
May-Jul 2018 (r)	3.7	2.1	2.9	2.2	1.6	1.9	3.3	2.8	4.5	2.9
Jun-Aug 2018	3.7	2.1	3.0	2.2	1.6	1.9	3.3	2.4	4.5	2.9
Jul-Sept 2018	3.6	2.3	3.1	2.2	1.7	1.9	3.2	2.3	4.3	2.9
Aug-Oct 2018	3.6	2.2	3.3	2.2	1.8	1.8	3.2	2.6	4.3	2.9
Sept-Nov 2018	3.6	2.4	3.1	2.1	1.8	1.9	3.2	3.0	4.2	2.9
Oct-Dec 2018	3.7	2.6	3.1	2.0	1.8	1.9	3.2	2.9	4.1	2.9
Nov-Jan 2019	3.6	2.9	3.2	2.0	1.6	1.8	3.3	3.0	4.2	2.9
Dec-Feb 2019	3.4	2.8	3.2	1.9	1.5	1.9	3.3	2.8	4.1	2.9
Jan-Mar 2019	3.2	2.3	3.2	1.9	1.6	1.9	3.3	3.0	3.9	2.9
Feb-Apr 2019 (r)	3.2	2.1	3.2	1.9	1.7	1.9	3.3	2.8	3.5	2.9
Mar-May 2019 (r)	3.2	2.0	3.2	1.9	1.7	1.9	3.4	2.8	3.4	2.9
Apr-Jun 2019 (r)	3.3	2.3	3.1	1.9	1.7	2.0	3.4	2.7	3.2	2.8
May-Jul 2019 (p)	3.2	2.1	3.1	1.8	1.7	2.0	3.4	3.2	3.1	2.8
Change on quarter *	0.0	0.0	0.0	-0.1	0.1	0.0	0.1	0.3	-0.5	-0.1
Change on year	-0.5	0.0	0.3	-0.3	0.1	0.1	0.1	0.4	-1.4	-0.1

1. Excludes Agriculture, Forestry and Fishing.

2. Not seasonally adjusted. These series do not display seasonality. Therefore the unadjusted series is the best estimate of a 'seasonally adjusted' series.

* Change on previous non-overlapping three month rolling average time period.

Source: ONS Vacancy Survey

Vacancy Survey enquiries: vacancy.survey@ons.gov.uk, 01633 456777

REDUNDANCIES

22 Redundancies: level and rates ¹

United Kingdom (seasonally adjusted)

	People (aged 16 and over)		Men (aged 16 and over)		Women (aged 16 and over)	
	Level (000s)	Rate ¹	Level (000s)	Rate ¹	Level (000s)	Rate ¹
	BEAO	BEIR	BEIU	BEIX	BEJA	BEJD
Apr-Jun 2017	112	4.1	69	5.1	43	3.2
Apr-Jun 2018	98	3.6	51	3.7	47	3.5
Jul-Sep 2018	84	3.1	44	3.2	40	3.0
Oct-Dec 2018	91	3.3	48	3.4	44	3.2
Jan-Mar 2019	92	3.3	57	4.0	36	2.6
Apr-Jun 2019	104	3.8	59	4.2	45	3.3
change on quarter	11	0.4	2	0.2	9	0.7
change %	12.3		3.8		25.8	
change on year	6	0.2	8	0.6	-2	-0.2
change %	5.6		15.1		-4.6	

Data source: Labour Force Survey

Labour market statistics enquiries: labour.market@ons.gov.uk

1. The redundancy rate is the ratio of the redundancy level for the given quarter to the seasonally adjusted number of employees in the previous quarter, multiplied by 1,000.

REGIONAL SUMMARY

23(1) Regional summary of labour market headline indicators

Thousands, seasonally adjusted

Headline estimates for April to June 2019

Area Codes	Area Names	Economically active 1		Employment		Unemployment		Economically inactive	
		Aged 16+ Level	Aged 16-64 Rate (%)2	Aged 16+ Level	Aged 16-64 Rate (%)2	Aged 16+ Level	Aged 16+ Rate (%)3	Aged 16-64 Level	Aged 16-64 Rate (%)2
K02000001	United Kingdom	34,140	79.3	32,811	76.1	1,329	3.9	8,562	20.7
K03000001	Great Britain	33,239	79.4	31,937	76.2	1,301	3.9	8,265	20.6
E92000001	England	28,891	79.6	27,752	76.4	1,138	3.9	7,103	20.4
E12000001	North East	1,272	75.0	1,204	70.8	68	5.3	410	25.0
E12000002	North West	3,643	78.1	3,485	74.7	158	4.3	983	21.9
E12000003	Yorkshire and The Humber	2,713	77.3	2,576	73.3	136	5.0	766	22.7
E12000004	East Midlands	2,472	80.5	2,366	76.9	106	4.3	575	19.5
E12000005	West Midlands	2,944	78.1	2,809	74.4	134	4.6	792	21.9
E12000006	East	3,231	81.7	3,135	79.2	95	2.9	691	18.3
E12000007	London	4,889	78.3	4,667	74.7	222	4.5	1,317	21.7
E12000008	South East	4,800	82.1	4,661	79.6	139	2.9	998	17.9
E12000009	South West	2,927	82.8	2,848	80.5	79	2.7	572	17.2
W92000004	Wales	1,561	78.2	1,500	75.0	61	3.9	417	21.8
S92000003	Scotland	2,787	78.4	2,685	75.4	102	3.6	745	21.6
N92000002	Northern Ireland	902	74.5	874	72.2	28	3.1	297	25.5

Change on quarter (change since January to March 2019)

Note: Changes on quarter at regional level are particularly subject to sampling variability and should be interpreted in the context of changes over several quarters rather than in isolation.

Area Codes	Area Names	Economically active 1		Employment		Unemployment		Economically inactive	
		Aged 16+ Level	Aged 16-64 Rate (%)2	Aged 16+ Level	Aged 16-64 Rate (%)2	Aged 16+ Level	Aged 16+ Rate (%)3	Aged 16-64 Level	Aged 16-64 Rate (%)2
K02000001	United Kingdom	146	0.1	115	0.0	31	0.1	-47	-0.1
K03000001	Great Britain	130	0.1	101	0.0	29	0.1	-34	-0.1
E92000001	England	127	0.1	100	0.0	27	0.1	-40	-0.1
E12000001	North East	-3	-0.3	-2	-0.3	-1	-0.1	5	0.3
E12000002	North West	25	0.3	4	-0.2	21	0.6	-14	-0.3
E12000003	Yorkshire and The Humber	-21	-0.8	-28	-1.0	7	0.3	29	0.8
E12000004	East Midlands	25	0.7	18	0.4	7	0.3	-20	-0.7
E12000005	West Midlands	17	0.1	31	0.5	-14	-0.5	-1	-0.1
E12000006	East	5	-0.2	4	-0.2	1	0.0	9	0.2
E12000007	London	-9	-0.1	-17	-0.3	8	0.2	8	0.1
E12000008	South East	41	0.3	53	0.5	-12	-0.3	-18	-0.3
E12000009	South West	46	1.1	36	0.9	10	0.3	-37	-1.1
W92000004	Wales	-13	-0.9	-2	-0.4	-10	-0.6	18	0.9
S92000003	Scotland	16	0.4	4	0.0	12	0.4	-12	-0.4
N92000002	Northern Ireland	16	1.1	14	0.9	2	0.2	-13	-1.1

Change on year (change since April to June 2018)

Area Codes	Area Names	Economically active 1		Employment		Unemployment		Economically inactive	
		Aged 16+ Level	Aged 16-64 Rate (%)2	Aged 16+ Level	Aged 16-64 Rate (%)2	Aged 16+ Level	Aged 16+ Rate (%)3	Aged 16-64 Level	Aged 16-64 Rate (%)2
K02000001	United Kingdom	392	0.5	425	0.6	-33	-0.1	-176	-0.5
K03000001	Great Britain	365	0.4	394	0.5	-29	-0.1	-151	-0.4
E92000001	England	350	0.5	366	0.5	-16	-0.1	-148	-0.5
E12000001	North East	21	0.5	8	-0.3	13	1.0	-9	-0.5
E12000002	North West	46	0.6	36	0.4	10	0.2	-27	-0.6
E12000003	Yorkshire and The Humber	12	0.0	-7	-0.5	19	0.7	1	0.0
E12000004	East Midlands	80	2.4	71	2.1	9	0.2	-71	-2.4
E12000005	West Midlands	-4	-0.4	1	-0.4	-5	-0.2	17	0.4
E12000006	East	48	0.4	55	0.6	-7	-0.3	-12	-0.4
E12000007	London	18	-0.2	34	0.1	-16	-0.3	23	0.2
E12000008	South East	80	0.7	114	1.3	-34	-0.8	-37	-0.7
E12000009	South West	49	1.0	55	1.2	-6	-0.3	-33	-1.0
W92000004	Wales	11	0.3	12	0.3	-1	-0.1	-6	-0.3
S92000003	Scotland	4	-0.1	17	0.2	-12	-0.5	4	0.1
N92000002	Northern Ireland	26	2.2	30	2.6	-4	-0.6	-25	-2.2

The Labour Force Survey is tabulated by region of residence.

1. Economically active = Employment plus Unemployment.

2. Denominator = all persons aged 16 to 64.

3. Denominator = total economically active

Source: Labour Force Survey

Labour market statistics enquiries: labour.market@ons.gov.uk

REGIONAL SUMMARY

23(2) Regional summary of Workforce

Thousands,
seasonally adjusted

Area Codes	Area Names	March 2019	Change on December 2018
K02000001	United Kingdom	35,538	255
K03000001	Great Britain	34,631	245
E92000001	England	30,463	215
E12000001	North East	1,173	-22
E12000002	North West	3,883	56
E12000003	Yorkshire and The Humber	2,794	-20
E12000004	East Midlands	2,381	38
E12000005	West Midlands	2,962	15
E12000006	East	3,282	15
E12000007	London	6,087	87
E12000008	South East	4,902	23
E12000009	South West	3,000	24
W92000004	Wales	1,457	11
S92000003	Scotland	2,711	20
N92000002	Northern Ireland	898	10

Workforce jobs are mainly sourced from employer surveys and are tabulated by region of workplace.

HM Forces stationed abroad are included in the UK workforce jobs estimates but not in the regional estimates. The UK workforce jobs estimates therefore do not equal the sum of the regional estimates.