

Statistical bulletin

Labour market overview, UK: June 2020

Estimates of employment, unemployment, economic inactivity and other employment-related statistics for the UK.



Contact:
Debra Leaker
labour.market@ons.gov.uk
+44 (0)1633 455400

Release date:
16 June 2020

Next release:
16 July 2020

Notice

16 June 2020

The effect of the coronavirus (COVID-19) pandemic on our capacity means we have reviewed the existing labour market releases and will be suspending some publications.

This will protect the delivery and quality of our remaining labour market outputs as well as ensuring we can respond to new demands as a direct result of COVID-19. More details about the impact on labour market outputs can be found in our [statement](#).

Table of contents

1. [Other pages in this release](#)
2. [Main points](#)
3. [Coronavirus and measuring the labour market](#)
4. [Employment](#)
5. [Hours worked](#)
6. [Unemployment](#)
7. [Claimant Count \(Experimental Statistics\)](#)
8. [Economic inactivity](#)
9. [Vacancies](#)
10. [Earnings growth](#)
11. [Economic commentary](#)
12. [Labour market data](#)
13. [Glossary](#)
14. [Measuring the data](#)
15. [Strengths and limitations](#)
16. [Related links](#)

1 . Other pages in this release

Other commentary from the latest labour market data can be found on the following pages:

- [Employment in the UK](#)
- [Average weekly earnings in Great Britain](#)
- [Vacancies, jobs and public sector employment in the UK](#)
- [Earnings and employment from Pay As You Earn Real Time Information, UK](#)

2 . Main points

Early indicators for May 2020 suggest that the number of employees in the UK on payrolls is down over 600,000 compared with March 2020. The Claimant Count has continued to rise, enhancements to Universal Credit as part of the UK government's response to the coronavirus (COVID-19) mean an increase in the number of people eligible.

Meanwhile, the number of vacancies in May has fallen to a record low.

Labour Force Survey (LFS) data, covering the period up to end of April 2020, show weakening employment rates, with the self-employed and men seeing some reduction in employment. The largest changes are seen in the number of people temporarily away from work, including furloughed workers, which rose by 6 million at the end of March into April, leading to a large fall in hours worked.

Employee average pay growth slowed notably in April 2020, and the three months to April saw total pay fall in real terms for the first time since January 2018; pay declined in industries where furloughing was most prominent, many of these being the lowest-paying industries, in particular accommodation and food service activities.

- The UK employment rate in the three months to April 2020 was estimated at 76.4%, 0.3 percentage points higher than a year earlier but 0.1 percentage points down on the previous quarter.
- The UK unemployment rate for the three months to April 2020 was estimated at 3.9%, 0.1 percentage points higher than a year earlier but largely unchanged on the previous quarter.
- The total number of weekly hours worked in the three months to April 2020 was 959.9 million, down a record 94.2 million (8.9%) hours on the previous year.
- The three months to April 2020 saw total pay fall in real terms for the first time since January 2018.
- There were an estimated 476,000 vacancies in the UK in March to May 2020; this is 342,000 fewer than the previous quarter and 365,000 fewer than a year earlier; experimental single-month estimates indicate a decrease of approximately 60% of vacancies for May 2020 compared with March 2020.
- The Claimant Count continued to rise during May 2020 reaching 2.8 million; this includes both those employed with low income or hours and those who are unemployed.
- Early estimates for May 2020 from Pay As You Earn Real Time Information (PAYE RTI) indicate that the number of payroll employees fell by 2.1% (612,000) compared with March 2020.

The majority of data in this bulletin come from surveys of households and businesses. It is not possible to survey every household and business each month, so these statistics are estimates based on samples.

3 . Coronavirus and measuring the labour market

The data presented in this bulletin are collected from various sources, each cover different reference periods or count dates and are therefore impacted differently by the coronavirus (COVID-19) social distancing and lockdown measures.

A [blog](#) published by David Freeman, Head of Labour Market Statistics, published on 15 June attempts to understand the impact on jobs and pay – how the Office for National Statistics (ONS) is now measuring the labour market.

Figure 1 shows the data reported in this bulletin (dark bars) alongside their different reference periods and count dates (white text). The main coronavirus (COVID-19) dates are included to show how much of the data presented were impacted by the implementation of coronavirus (COVID-19) social distancing and lockdown measures.

Figure 1: Impact of the main coronavirus (COVID-19) dates on labour market data sources

Data source reporting periods; reference periods and count dates alongside main coronavirus (COVID-19) dates

4 . Employment

[Employment](#) measures the number of people aged 16 years and over in paid work and those who had a job that they were temporarily away from. The employment rate is the proportion of people aged between 16 and 64 years who are in employment.

For February to April 2020:

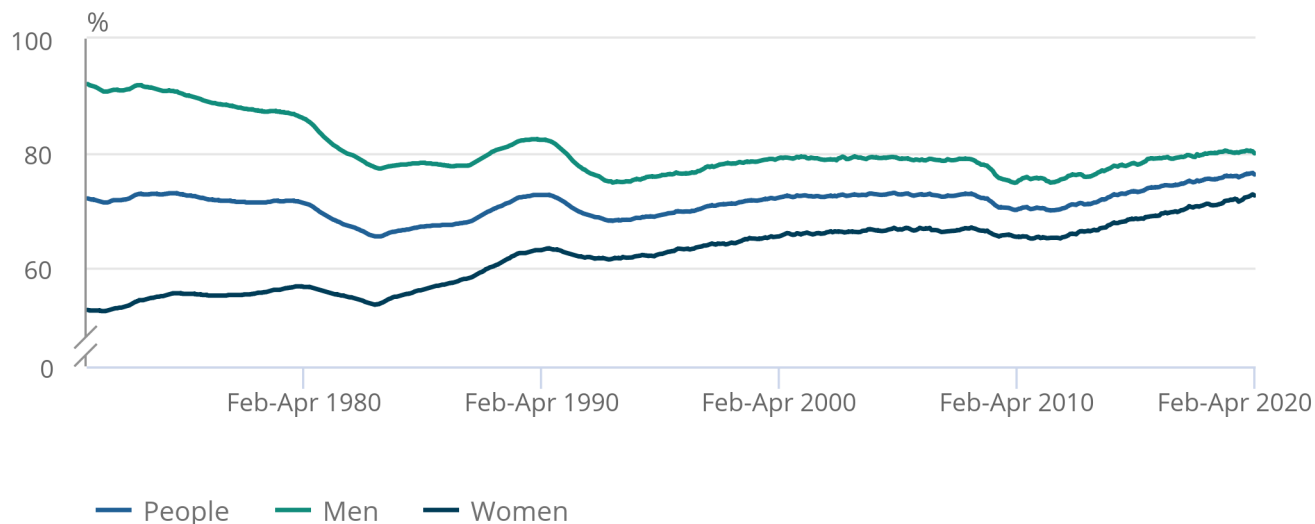
- the estimated employment rate for all people was 76.4%; this is 0.3 percentage points up on the year but 0.1 percentage points down on the quarter
- the estimated employment rate for men was 80.1%; this is 0.2 percentage points down on the year and 0.4 percentage points down on the quarter
- the estimated employment rate for women was 72.7%; this is 0.7 percentage points up on the year and 0.2 percentage points up on the quarter

Figure 2 : The employment rate for all people increased by 0.3 percentage points on the year to 76.4%, but was down 0.1 percentage points on the quarter

UK employment rates (aged 16 to 64 years), seasonally adjusted, between January to March 1971 and February to April 2020

Figure 2 : The employment rate for all people increased by 0.3 percentage points on the year to 76.4%, but was down 0.1 percentage points on the quarter

UK employment rates (aged 16 to 64 years), seasonally adjusted, between January to March 1971 and February to April 2020



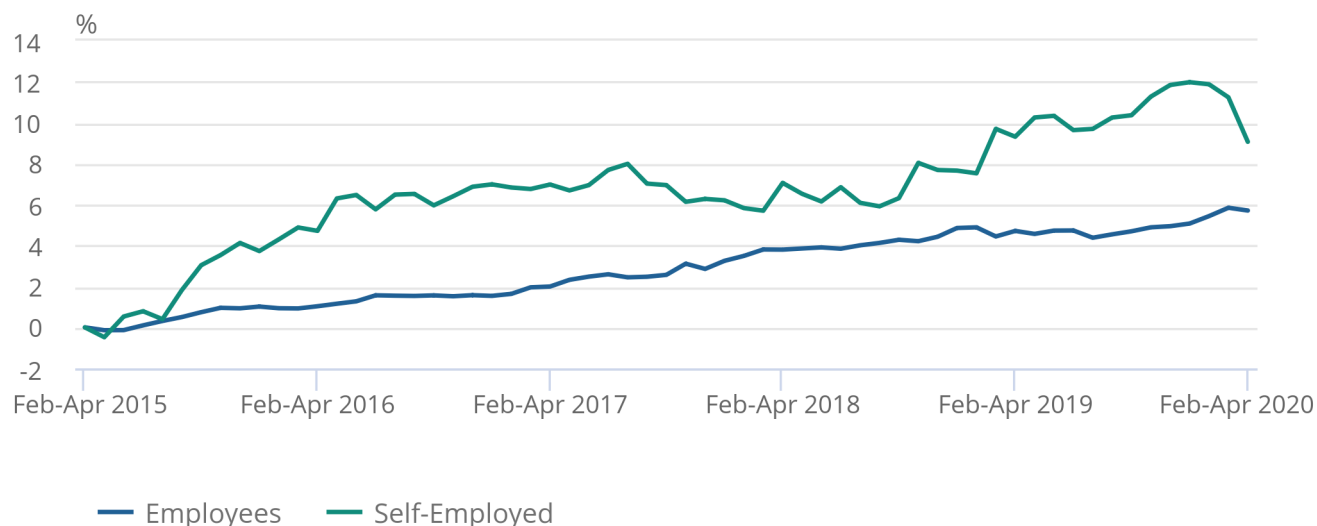
Source: Office for National Statistics – Labour Force Survey

Figure 3: Record quarterly decrease for self-employed workers

UK employment percentage growth for employees and self-employed people (aged 16 years and over), seasonally adjusted, compared with February to April 2015

Figure 3: Record quarterly decrease for self-employed workers

UK employment percentage growth for employees and self-employed people (aged 16 years and over), seasonally adjusted, compared with February to April 2015



Source: Office for National Statistics - Labour Force Survey

February to April 2020 saw a record quarterly fall in the number of self-employed (down 131,000) as seen in Figure 3.

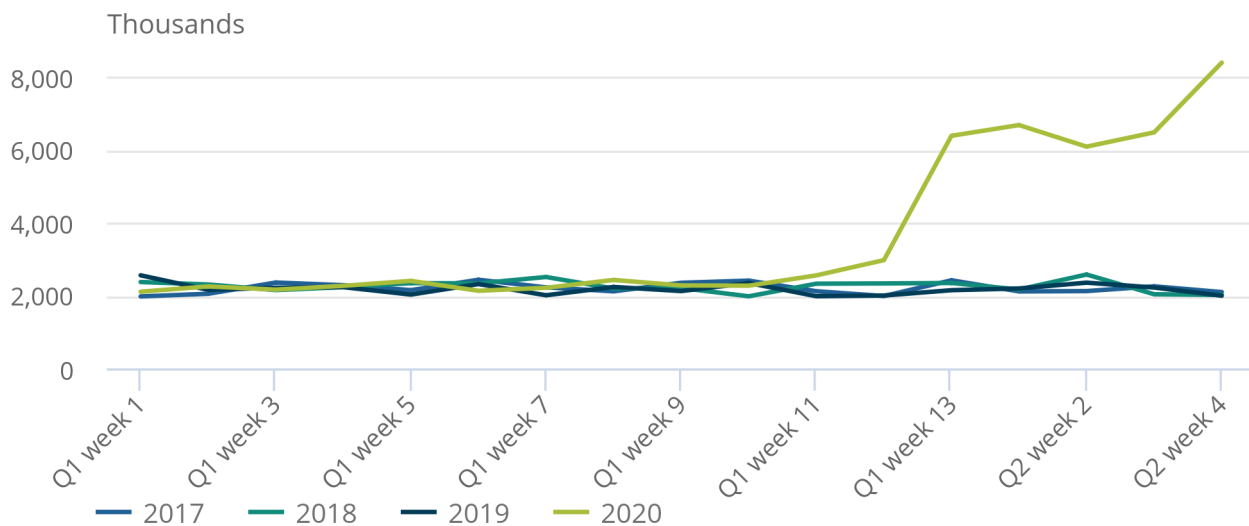
Experimental estimates based on returns for individual weeks suggest no major change to the employment or unemployment rates are observed in any of the weeks since lockdown (week 13 in Quarter 1 (January to March) 2020 and weeks 1 to 4 in Quarter 2 (April to June)). However, a slight downward trend can be seen in the employment rate for the final two weeks of April 2020. The numbers who were employed, but temporarily away from work showed a significant increase at the end of March continuing into April (up around 6 million). Further details of the experimental weekly figures can be found in the [Single month article](#).

Figure 4: The number of those temporarily away from a job has increased significantly since lockdown

Total number of persons temporarily away from paid work, seasonally adjusted, UK , January to April 2017 to January to April 2020

Figure 4: The number of those temporarily away from a job has increased significantly since lockdown

Total number of persons temporarily away from paid work, seasonally adjusted, UK , January to April 2017 to January to April 2020



Source: Office for National Statistics - Labour Force Survey

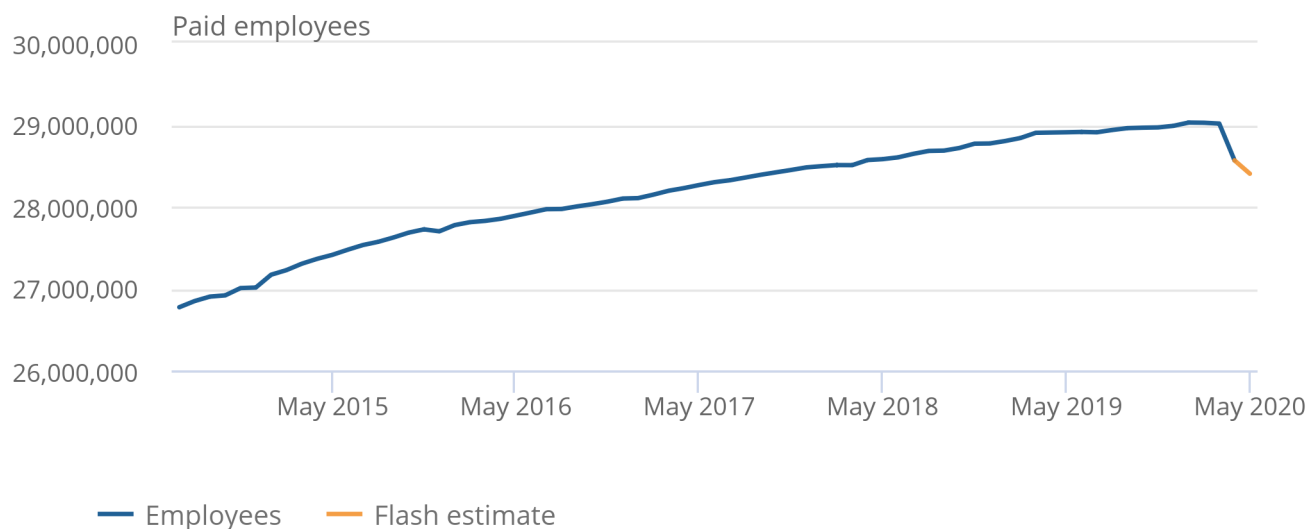
Experimental data of the number of payroll employees using HM Revenue and Customs' (HMRC's) Pay As You Earn Real Time Information figures show a fall in payroll employees in recent months. [Early estimates for May 2020 from PAYE RTI](#) indicate that the number of payroll employees fell by 2.1% (612,000) compared with March 2020.

Figure 5: After rising for several years, the number of employees on payroll has fallen in recent months

Paid employees, seasonally adjusted, UK, July 2014 to May 2020

Figure 5: After rising for several years, the number of employees on payroll has fallen in recent months

Paid employees, seasonally adjusted, UK, July 2014 to May 2020



Source: HM Revenue and Customs - Pay As You Earn Real Time Information

5 . Hours worked

Figure 6: Largest annual decrease in total actual weekly hours on record

UK total actual weekly hours worked (people aged 16 years and over), seasonally adjusted, between August to October 1992 and February to April 2020

Figure 6: Largest annual decrease in total actual weekly hours on record

UK total actual weekly hours worked (people aged 16 years and over), seasonally adjusted, between August to October 1992 and February to April 2020



Source: Office for National Statistics - Labour Force Survey

Between February to April 2019 and February to April 2020, total actual weekly hours worked in the UK decreased by 94.2 million, or 8.9%, to 959.9 million hours. A decrease of 91.2 million or 8.7% was also seen on the quarter. The “accommodation and food service activities” industrial sector saw the biggest fall in average actual hours; down 6.9 hours to 21.2 hours per week.

6 . Unemployment

[Unemployment](#) measures people without a job who have been actively seeking work within the last four weeks and are available to start work within the next two weeks. The unemployment rate is not the proportion of the total population who are unemployed. It is the proportion of the economically active population (those in work plus those seeking and available to work) who are unemployed.

Estimated unemployment rates for both men and women aged 16 years and over have generally been falling since late 2013 but have levelled off in recent periods (Figure 7).

For February to April 2020:

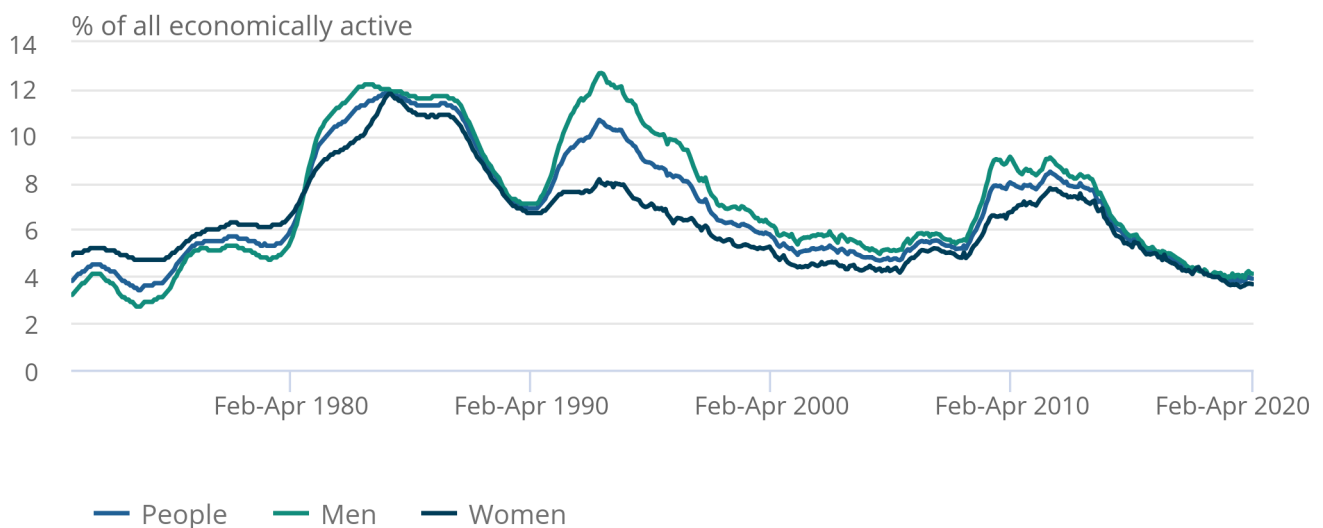
- the estimated UK unemployment rate for all people was 3.9%; 0.1 percentage points higher than a year earlier but unchanged on the previous quarter
- the estimated UK unemployment rate for men was 4.1%; this is 0.1 percentage points higher than a year earlier but unchanged on the previous quarter
- the estimated UK unemployment rate for women was 3.7%; this is largely unchanged compared with a year earlier and on the quarter

Figure 7: Unemployment rates have levelled off over the last year, following a period of decreasing rates

UK unemployment rates (aged 16 years and over), seasonally adjusted, between January to March 1971 and February to April 2020

Figure 7: Unemployment rates have levelled off over the last year, following a period of decreasing rates

UK unemployment rates (aged 16 years and over), seasonally adjusted, between January to March 1971 and February to April 2020



Source: Office for National Statistics – Labour Force Survey

7 . Claimant Count (Experimental Statistics)

The Claimant Count is an [Experimental Statistic](#) that seeks to measure the number of people claiming benefit principally for the reason of being unemployed.

These Claimant Count statistics relate to 14 May 2020. Enhancements to Universal Credit as part of the UK government's response to the coronavirus mean that an increasing number of people became eligible for unemployment-related benefit support, although still employed. Consequently changes in the Claimant Count will not be due wholly to changes in the number of people who are unemployed. We are not able to identify to what extent people who are employed or unemployed have affected the numbers.

To achieve this, the Claimant Count has generally been a count of the appropriate benefits within the UK's current benefit regime that best meet that criteria. Currently this is a combination of claimants of Jobseeker's Allowance (JSA) and claimants of Universal Credit (UC) who fall within the UC "searching for work" conditionality.

Those claiming unemployment-related benefits (either UC or JSA) may be wholly unemployed and seeking work, or may be employed but with low income and/or low hours, that make them eligible for unemployment-related benefit support.

Under UC a broader span of claimants became eligible for unemployment-related benefit than under the previous benefit regime. During the roll-out of UC since 2013, movements in the Claimant Count have been significantly affected by this expanding eligibility, rather than labour market conditions. This impact has led to the Claimant Count being reclassified to an Experimental Statistic.

Consequently, while some of any movement in the Claimant Count would be because of changes in the number of people who become unemployed, a certain amount of the movement will be because of changes in the number of employed people who are eligible for Universal Credit as part of the government response. We are not able to identify to what extent these two factors have affected the numbers.

As part of the UK government's response to the coronavirus (COVID-19), a number of enhancements were introduced to UC. These may have increased the number of employed people eligible for UC through their earnings falling below income thresholds.

Such claims will generally fall within the work search conditionality within UC.

Consequently, while some of any movement in the Claimant Count would be because of changes in the number of people who become unemployed, a certain amount of the movement will be because of changes in the number of employed people who are eligible for Universal Credit as part of the government response. We are not able to identify to what extent these two factors have affected the numbers.

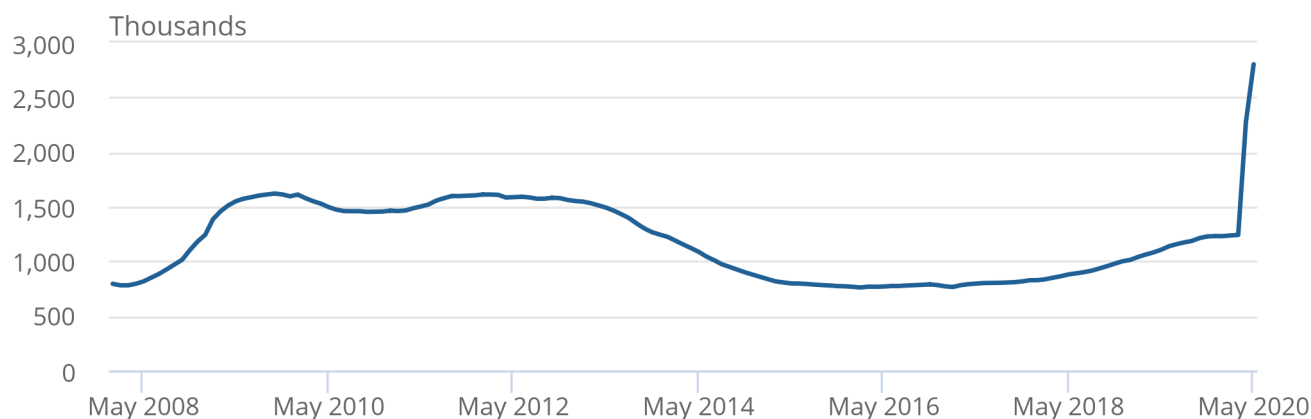
The Claimant Count increased in May 2020 to 2.8 million (Figure 8). This represents a monthly increase of 23.3% and an increase of 125.9%, or 1.6 million, since March 2020.

Figure 8: UK Claimant Count level increased by 125.9% since March 2020

UK Claimant Count, seasonally adjusted, between January 2008 and May 2020

Figure 8: UK Claimant Count level increased by 125.9% since March 2020

UK Claimant Count, seasonally adjusted, between January 2008 and May 2020



Source: Department for Work and Pensions

8 . Economic inactivity

[Economic inactivity](#) measures people without a job but who are not classed as unemployed because they have not been actively seeking work within the last four weeks and/or they are unable to start work within the next two weeks. Our headline measure of economic inactivity is for those aged between 16 and 64 years.

Since comparable records began in 1971, the economic inactivity rate for all people aged between 16 and 64 years has generally been falling (although it increased during recessions). This is because of a gradual fall in the economic inactivity rate for women (as seen in Figure 9). Over recent years, the economic inactivity rate for men has been relatively flat.

For people aged between 16 and 64 years, for February to April 2020:

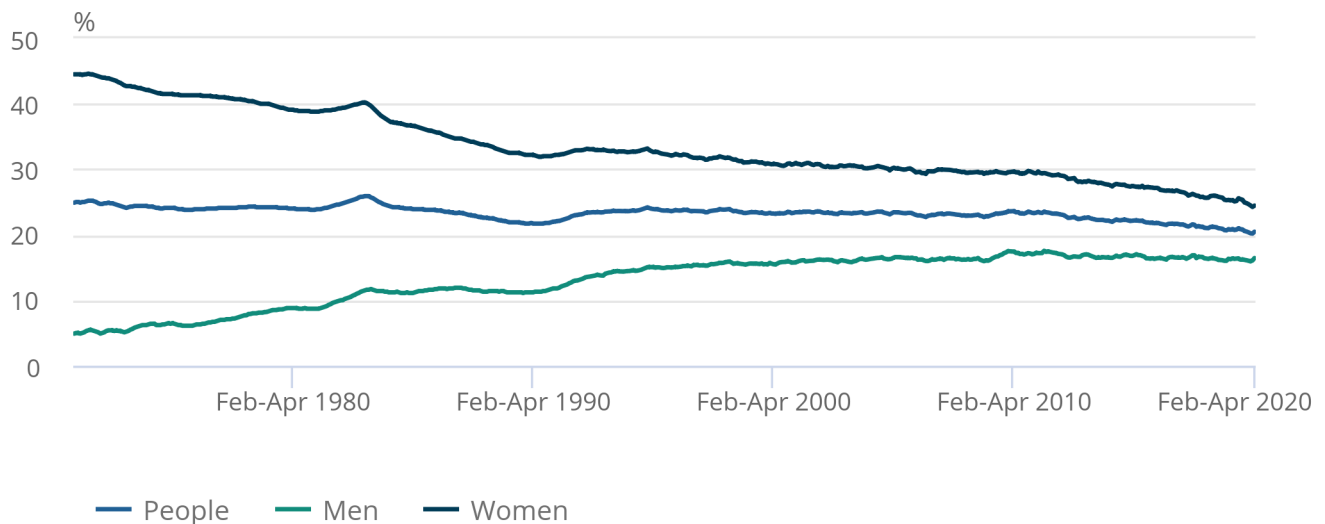
- the estimated economic inactivity rate for all people was 20.5%; this is down by 0.3 percentage points on the year but up 0.1 percentage points on the quarter
- the estimated economic inactivity rate for men was 16.4%; this is up by 0.2 percentage points on the year and up 0.4 percentage points on the quarter
- the estimated economic inactivity rate for women was 24.4%; this is down by 0.8 percentage points on the year and down by 0.2 percentage points on the quarter

Figure 9: The overall economic inactivity rate for people aged between 16 and 64 years was at 20.5%, down 0.3 percentage points on the year, but up 0.1 percentage points on the quarter

UK economic inactivity rate (all people aged 16 to 64 years), seasonally adjusted, between January to March 1971 and February to April 2020

Figure 9: The overall economic inactivity rate for people aged between 16 and 64 years was at 20.5%, down 0.3 percentage points on the year, but up 0.1 percentage points on the quarter

UK economic inactivity rate (all people aged 16 to 64 years), seasonally adjusted, between January to March 1971 and February to April 2020



Source: Office for National Statistics – Labour Force Survey

9 . Vacancies

Figure 10: March to May 2020 saw the largest quarterly decrease to the vacancies total since the current series started in 2001

Number of vacancies in the UK, seasonally adjusted, between March to May 2002 and March to May 2020

Figure 10: March to May 2020 saw the largest quarterly decrease to the vacancies total since the current series started in 2001

Number of vacancies in the UK, seasonally adjusted, between March to May 2002 and March to May 2020



Source: Office for National Statistics – Vacancy Survey

For March to May 2020, there were an estimated 476,000 vacancies in the UK; this is 342,000 fewer than in the previous quarter (December 2019 to February 2020). This is the largest quarterly fall in the history of the time series.

Contributing most strongly to the quarterly movement were the “wholesale, retail trade and repair of motor vehicles” industrial sector down 67,000 (49.9%) and the “accommodation and food service activities” industrial sector down by 64,000 (70.7%), both record quarterly falls. These industries have been impacted heavily by social distancing measures, with hotels, restaurants and retail stores being closed as a result.

The [experimental](#) monthly vacancies data show that the number of vacancies in May has fallen to a record low.

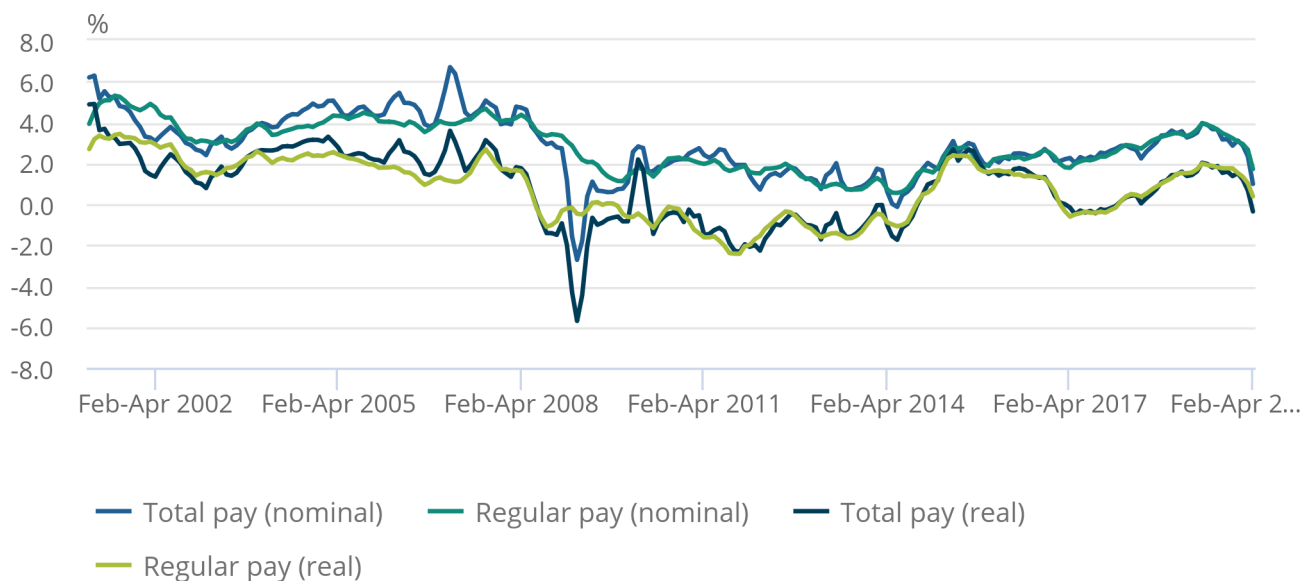
10 . Earnings growth

Figure 11: Pay growth for employees in total pay (including bonuses) is estimated to be 1.0%; this translates to a fall of 0.4% in real terms

Great Britain average weekly earnings annual growth rates, seasonally adjusted, January to March 2001 to February to April 2020

Figure 11: Pay growth for employees in total pay (including bonuses) is estimated to be 1.0%; this translates to a fall of 0.4% in real terms

Great Britain average weekly earnings annual growth rates, seasonally adjusted, January to March 2001 to February to April 2020



Source: Office for National Statistics – Monthly Wages and Salaries Survey

Average weekly earnings estimates are based on the pay period including the last week of each month. For April 2020 this was after coronavirus (COVID-19) restrictions were introduced. For March 2020, only a low proportion of employees' pay is affected, as payrolls are often set by mid-month (before restrictions were introduced).

For the the three months to April 2020:

- total pay (nominal) annual growth rate was 1.0%
- regular pay (nominal) annual growth rate was 1.7%
- total pay (real) annual growth rate was negative 0.4%
- regular pay (real) annual growth rate was 0.4%

This is the first time since the three months to January 2018 that we have seen total pay fall in real terms. It is more impacted than that for regular pay because of subdued bonuses, which fell by an average negative 6.8% (in nominal terms) in the three months February to April 2020.

Between February to April 2019 and February to April 2020, average pay growth varied by industry sector. The public sector saw the highest estimated growth, at 3.2% for regular pay, while negative growth was seen in the construction sector, estimated at negative 1.8%. Both the wholesaling, retailing, hotels and restaurants sector and the manufacturing sector saw very weak growth at 0.1% for regular pay. At industry level, those with the lowest pay levels have seen a fall in pay, in particular accommodation and food service activities.

11 . Economic commentary

The coronavirus (COVID-19) pandemic continues to disrupt economic activity. In the three months to April 2020, [UK gross domestic product \(GDP\)](#) fell by 10.4%. Output from the production sector fell by 9.5% while that from the construction and the services sectors fell by 18.2% and 9.9% respectively.

[Retail sales, Great Britain: April 2020](#) shows that consumption and expenditure continue to fall. The volume of retail sales fell by a record 18.1% in April 2020 compared with a fall of 5.2% in March 2020, with all types of outlets recording declining sales volumes except for non-store retailing and alcohol and tobacco stores.

The introduction of social distancing and the closure of certain activities has impacted on labour supply and demand, while the support measures introduced (the Coronavirus Job Retention Scheme, the Coronavirus Business Interruption Loan Scheme and the Self-Employed Income Support Scheme) have helped to protect employment.

The latest Labour Force Survey (LFS) estimates for the period February to April 2020 show that employment, unemployment and inactivity remained mostly unaffected by the impact of the pandemic. However, the pandemic has impacted on actual hours worked and vacancy levels. For full-time and part-time workers, average actual weekly hours worked had the largest falls to record lows. The largest quarterly decrease to the vacancies total since the data time series started in 2001 took place in March to May 2020.

Experimental monthly estimates of paid employees and their pay from HM Revenue and Customs' (HMRC's) Pay As You Earn (PAYE) Real Time Information (RTI) data shows that the number of paid employees fell by 612,000 between March 2020 and May 2020.

External surveys also show that conditions in the labour market remain challenging. [The UK Household Finance Index](#) for May 2020 shows that individual job security perceptions have fallen drastically across all industries.

The [Business impact of coronavirus, analysis over time, UK: Waves 2 to 5 panel](#), which covers the period between 23 March 2020 and 17 May 2020, shows that the expected workforce size has varied across each wave. Of those firms which were still trading, the proportion that expected a reduction in their workforce size decreased from 30% in Wave 2 to 9% in Wave 5.

The [Business Impact of Coronavirus \(COVID-19\) Survey \(BICS\)](#) for the period 18 May to 31 May 2020 shows that the Coronavirus Job Retention Scheme (CRJS) was the most common government support scheme applied for, with 81% of all businesses applying. In addition, the HM Revenue and Customs [CJRS statistics \(PDF, 199KB\)](#) show that 1.07 million employers had made at least one claim for CJRS in the period up to 31 May 2020, covering 8.7 million employments (for example, jobs not individuals).

Total and regular average weekly earnings growth slowed to 1.0% and 1.7% respectively in the three months to April 2020. The Chartered Institute of Personnel Development's [Labour Market Outlook for spring 2020](#), highlights that pay expectations are expected to drop significantly over the next few months, with basic pay increases likely to be frozen in the private sector.

12 . Labour market data

[Summary of labour market statistics](#)

Dataset A01 | Released 16 June 2020

Estimates of employment, unemployment and other employment-related statistics for the UK.

[Employment, unemployment and economic inactivity](#)

Dataset A02 SA | Released 16 June 2020

Estimates of UK employment, unemployment and economic inactivity for people aged 16 years and over and people aged between 16 and 64 years based on the Labour Force Survey (LFS).

[Average weekly earnings](#)

Dataset EARN01 | Released 16 June 2020

Estimates of Great Britain earnings growth based on the Monthly Wages and Salaries Survey.

[Vacancies by industry](#)

Dataset VACS02 | Released 16 June 2020

Estimates of the number of UK job vacancies for each industry, based on a survey of businesses.

View all related data on the [related data page](#). Alternatively, [Nomis](#) provides free access to the most detailed and up-to-date UK labour market statistics from official sources.

Table 1: Labour Force Survey sampling variability (95% confidence intervals)
Sampling variability (95% confidence intervals) of UK Labour Force Survey estimates, February to April 2020

	Level	Sampling variability of level¹	Change on quarter	Sampling variability of change on quarter¹	Change on year	Sampling variability of change on year¹
Employment (000s, aged 16 and over)	32,991	± 198	6	± 161	245	± 252
Employment rate (aged 16 to 64)	76.4	± 0.4	-0.1	± 0.4	0.3	± 0.6
Average weekly hours	29.1	± 0.2	-2.8	± 0.2	-3.1	± 0.3
Unemployment (000s, aged 16 and over)	1,336	± 74	-8	± 78	31	± 98
Unemployment rate (aged 16 and over)	3.9	± 0.2	0.0	± 0.2	0.1	± 0.3
Economically active (000s, aged 16 and over)	34,327	± 191	-2	± 157	276	± 243
Economic activity rate (aged 16 to 64)	79.5	± 0.4	-0.1	± 0.4	0.3	± 0.5
Economically inactive (000s, aged 16 to 64)	8,470	± 171	39	± 141	-111	± 219
Economic inactivity rate (aged 16 to 64)	20.5	± 0.4	0.1	± 0.4	-0.3	± 0.5
Redundancies (000s, aged 16 and over)	107	± 21	1	± 28	-1	± 28

Source: Office for National Statistics – Labour Force Survey

Notes

1. The sampling variability estimates are for 95% confidence intervals and are calculated on data that are not seasonally adjusted.
2. These data are part of data table A11: Labour Force Survey sampling variability, which is part of the Labour market overview, UK release.

Table 2: Summary of employee earnings, seasonally adjusted, Great Britain, February to April 2020

	Annual growth rate (estimate)	Sampling variability of growth rate ¹
Total pay (nominal)	1.0	± 0.5
Total pay (real)	-0.4	
Regular pay (nominal)	1.7	± 0.5
Regular pay (real)	0.4	

Source: Office for National Statistics – Monthly Wages and Salaries Survey

Notes

1. The sampling variability estimates are for 95% confidence intervals (where we are 95% certain the true value lies within the specified range) and are calculated on not seasonally adjusted data for single month growth rates for the 12 months from January to December 2014. It is not possible to calculate confidence intervals for growth rates in real terms.

13 . Glossary

Average weekly earnings

[Average weekly earnings](#) measures money paid by employers to employees in Great Britain before tax and other deductions from pay. The estimates are not just a measure of pay rises as they also reflect, for example, changes in the overall structure of the workforce. More high-paid jobs in the economy would have an upward effect on the earnings growth rate.

Economic inactivity

People not in the labour force (also known as [economically inactive](#) are not in employment but do not meet the internationally accepted definition of unemployment because they have not been seeking work within the last four weeks and/or they are unable to start work in the next two weeks. The economic inactivity rate is the proportion of people aged between 16 and 64 years who are not in the labour force.

Employment

[Employment](#) measures the number of people in paid work or who had a job that they were temporarily away from (for example, because they were on holiday or off sick). This differs from the number of jobs because some people have more than one job. The employment rate is the proportion of people aged between 16 and 64 years who are in employment. A more detailed explanation is available in our [guide to labour market statistics](#).

Unemployment

[Unemployment](#) measures people without a job who have been actively seeking work within the last four weeks and are available to start work within the next two weeks. The unemployment rate is not the proportion of the total population who are unemployed. It is the proportion of the economically active population (those in work plus those seeking and available to work) who are unemployed.

Vacancies

[Vacancies](#) are defined as positions for which employers are actively seeking recruits from outside their business or organisation. The estimates are based on the Vacancy Survey; this is a survey of businesses designed to provide estimates of the stock of vacancies across the economy, excluding agriculture, forestry and fishing (a small sector for which the collection of estimates would not be practical).

Claimant Count

The Claimant Count measures the number of people claiming unemployment related benefits.

The Claimant Count estimates are currently designated as [Experimental Statistics](#) because the Universal Credit estimates are still being developed by the Department for Work and Pensions. However, the Claimant Count estimates do provide the best available estimates of the number of people claiming unemployment-related benefits in the UK.

The Claimant Count does not meet the internationally agreed definition of unemployment specified by the International Labour Organization (ILO). The estimates are sourced from the Jobcentre Plus administrative system.

There is a large degree of overlap between the Claimant Count and unemployment, although the latter figures are generally much higher. People who are not claimants can appear among the unemployed if they are not entitled to unemployment-related benefits. For example:

- people who are only looking for part-time work
- young people under 18 years are not usually eligible to claim Jobseeker's Allowance
- students looking for vacation work
- people who have left their job voluntarily

Some people recorded in the Claimant Count would not be counted as unemployed. For example, in certain circumstances people can claim Jobseeker's Allowance or Universal Credit while they have relatively low earnings from part-time work. These people would not be unemployed.

Pay as You Earn (PAYE) Real Time Information (RTI)

These data come from HM Revenue and Customs' (HMRC's) PAYE RTI system. They cover the whole population rather than a sample of people or companies, and they will allow for more detailed estimates of the population. The release is classed as Experimental Statistics as the methodologies used to produce the statistics are still in their development phase. As a result, the series are subject to revisions.

Pay As You Earn (PAYE) is the system employers and pension providers use to take Income Tax and National Insurance contributions before they pay wages or pensions to employees and pensioners. This publication relates to employees only and not pensioners.

A more detailed [glossary](#) is available.

14 . Measuring the data

Coronavirus (COVID-19)

In response to the developing coronavirus (COVID-19) pandemic, we are working to ensure that we continue to publish economic statistics. For more information, please see [COVID-19 and the production of statistics](#).

We have reviewed all publications and data published as part of the labour market release in response to the coronavirus pandemic. This has led to the [postponement of some publications and datasets](#) to ensure that we can continue to publish our main labour market data. This will protect the delivery and quality of our remaining outputs as well as ensuring we can respond to new demands as a direct result of the coronavirus.

For more information on how labour market data sources, among others, will be affected by the coronavirus pandemic, see the [statement](#) published on 27 March 2020. A further [article](#) published on 6 May 2020, detailed some of the challenges that we have faced in producing estimates at this time.

Our latest data and analysis on the impact of the coronavirus on the UK economy and population is now available on our dedicated [COVID-19 webpage](#). This will be the hub for all special coronavirus-related publications, drawing on all available data.

After EU withdrawal

As the UK leaves the EU, it is important that our statistics continue to be of high quality and are internationally comparable. During the transition period, those UK statistics that align with EU practice and rules will continue to do so in the same way as before 31 January 2020.

After the transition period, we will continue to produce our labour market statistics in line with the UK Statistics Authority's [Code of Practice for Statistics](#) and in accordance with International Labour Organization (ILO) definitions and agreed international statistical guidance.

Pre-release data

The Bank of England were granted exceptional pre-release access to the "Labour market overview, UK: June 2020" bulletin and accompanying tables at 9:00am on Monday 15 June 2020 so that the data were available for the Monetary Policy Committee (MPC) meeting held on that day. See [exchange of letters](#) requesting exceptional pre-release access so that data are available for discussion at the MPC.

The employment, unemployment and economic inactivity estimates rely on data collected from the LFS, a survey run by field interviewers with people across the UK every month.

The [LFS performance and quality monitoring reports](#) provide data on response rates and other quality related issues for the LFS, including breakdowns of response by LFS wave, region and question-specific response issues. The average weekly earnings and vacancies estimates rely on data collected from surveys of employers.

More quality and methodology information on strengths, limitations, appropriate uses, and how the data were created is available in the following Quality and Methodology Information (QMI) reports:

[LFS QMI](#)

[Average weekly earnings QMI](#)

[Vacancy Survey QMI](#)

Future publication dates

Because of a public holiday in Northern Ireland, the July 2020 and July 2021 labour market publication dates have both been moved two days later, moving from the usual Tuesday publication to Thursday for these two months. This change will ensure that users across the UK have the same access to advice from the teams who produce the statistics on the day of release. For further information, please see [Statement on changing the release dates of ONS statistics to avoid public holidays](#).

16 July 2020
11 August 2020
15 September 2020
13 October 2020
10 November 2020
15 December 2020
26 January 2021
23 February 2021
23 March 2021
20 April 2021
18 May 2021
15 June 2021
15 July 2021
17 August 2021
14 September 2021
12 October 2021
16 November 2021
14 December 2021

15 . Strengths and limitations

Accuracy of the statistics: estimating and reporting uncertainty

The figures in this bulletin come from surveys, which gather information from a sample rather than from the whole population. The sample is designed to be as accurate as possible given practical limitations such as time and cost constraints. Results from sample surveys are always estimates, not precise figures. This can have an impact on how changes in the estimates should be interpreted, especially for short-term comparisons.

As the number of people available in the sample gets smaller, the variability of the estimates that we can make from that sample size gets larger. Estimates for small groups (for example, unemployed people aged between 16 and 17 years), which are based on small subsets of the Labour Force Survey (LFS) sample, are less reliable and tend to be more volatile than for larger aggregated groups (for example, the total number of unemployed people).

In general, changes in the numbers (and especially the rates) reported in this bulletin between three-month periods are small and are not usually greater than the level that can be explained by sampling variability. Short-term movements in reported rates should be considered alongside longer-term patterns in the series and corresponding movements in other sources to give a fuller picture.

Further information is available in [A guide to labour market statistics](#).

Where to find data about uncertainty and reliability

[Dataset A11](#) shows sampling variabilities for estimates derived from the LFS.

Sampling variability information for average weekly earnings growth rates is available from the "Sampling Variability" worksheets within [datasets EARN01](#) and [EARN03](#).

The sampling variability of the three-month average vacancies level is around plus or minus 1.5% of that level. Information on revisions is available in the [labour market statistics revisions policy](#).

16 . Related links

[Earnings and employment from Pay As You Earn Real Time Information, UK](#)

Bulletin | Released 16 June 2020

[Experimental](#) monthly estimates of paid employees and their pay from HM Revenue and Customs' (HMRC) Pay As You Earn (PAYE) Real Time Information (RTI) data.

[Labour market in the regions of the UK](#)

Bulletin | Released 16 June 2020

Regional breakdowns of changes in UK employment, unemployment and economic inactivity.

[Young people not in education, employment or training \(NEET\)](#)

Bulletin | Released 28 May 2020

Estimates of people in the UK aged between 16 and 24 years who are NEET.

[Coronavirus \(COVID-19\) latest data and analysis](#)

Web page | Updated as and when data become available

Latest data and analysis on the coronavirus (COVID-19) in the UK and its effect on the economy and society.

[Business Impact of Coronavirus \(COVID-19\) Survey \(BICS\) questions: 18 May 2020 to 31 May 2020](#)

Article | Released 11 June 2020

Questions from the Business Impact of Coronavirus (COVID-19) Survey relating to the coronavirus, the UK economy and society, latest indicators weekly bulletin.

[Coronavirus and key workers in the UK](#)

Article | Released 15 May 2020

Estimates of the numbers and characteristics of those who could be considered as potential "key workers" in the response to the coronavirus (COVID-19).

Index of Tables

The table below provides an index of the tables appearing in this Statistical Bulletin and it shows how these table numbers match up with the Excel spreadsheet datasets which are available on the website at:
<https://www.ons.gov.uk/employmentandlabourmarket/peopleinwork/employmentandemployeetypes/bulletins/uklabourmarket/June2020/relateddata>

Statistical Bulletin table number	Table description	Dataset
	SUMMARY	
1	Labour Force Survey Summary	Dataset A02 SA
2 (*)	Labour market status by age group	Dataset A05 SA
	EMPLOYMENT AND JOBS	
3	Full-time, part-time & temporary workers	Dataset EMP01 SA
4	Public and private sector employment	Dataset EMP02
4(1)	Public sector employment by industry	Dataset EMP03
5	Workforce jobs summary	Dataset JOBS01
6 (**)	Workforce jobs by industry	Dataset JOBS02
7	Actual weekly hours worked	Dataset HOUR01 SA
7(1)	Usual weekly hours worked	Dataset HOUR02 SA
	NON-UK WORKERS	
8	Employment by country of birth and nationality	Dataset EMP06
8(1)	Unemployment and economic inactivity by country of birth and nationality	Dataset A12
	UNEMPLOYMENT	
9	Unemployment by age and duration	Dataset UNEM01 SA
	ECONOMIC ACTIVITY AND INACTIVITY	
10(*)	Economic activity by age	Dataset A05 SA
11	Economic inactivity by reason	Dataset INAC01 SA
12	Labour market and educational status of young people	Dataset A06 SA
	EARNINGS	
13	Average Weekly Earnings (nominal) - Total pay	Dataset EARN01
14	Average Weekly Earnings (nominal) - Bonus pay	Dataset EARN01
15	Average Weekly Earnings (nominal) - Regular pay	Dataset EARN01
16	Average Weekly Earnings real and nominal (summary table)	Dataset EARN01
	INTERNATIONAL SUMMARY	
17	International comparisons of employment and unemployment	Dataset A10
	LABOUR DISPUTES	
18	Labour disputes	Dataset LABD01
	VACANCIES	
19	Vacancies by size of business	Dataset VACS03
20	Vacancies and unemployment	Dataset VACS01
21	Vacancies by industry	Dataset VACS02
	REDUNDANCIES	
22	Redundancies levels and rates	Dataset RED01 SA
	REGIONAL SUMMARY	
23	Regional labour market summary	Dataset A07

(*) Tables 2 and 10 in the Statistical Bulletin pdf file have been amalgamated into one spreadsheet (Dataset A05 SA).

(**) Table JOBS02 provides more detail than Table 6 in the Statistical Bulletin pdf file.

The following symbols are used in the tables: p provisional, r revised, .. Not available, * suppressed due to small sample size.

The four-character identification codes appearing in the tables are the ONS references for the data series appearing in the Labour Market Statistics dataset which is available on the website at:

<https://www.ons.gov.uk/employmentandlabourmarket/peopleinwork/employmentandemployeetypes/datasets/labourmarketstatistics>

Summary of labour market statistics published on 16 June 2020

Series	Reference period	Latest estimate	Last time higher	Last time lower	Comparable data begins in
Employment level (aged 16 and over)	Feb-Apr 2020	32.991 million	Jan-Mar 2020 (33.144 million)	Nov-Jan 2020 (32.985 million)	Jan-Mar 1971
Employment rate (aged 16 to 64)	Feb-Apr 2020	76.4%	Jan-Mar 2020 (76.6%)	Sep-Nov 2019 (76.3%)	Jan-Mar 1971
Unemployment level (aged 16 and over)	Feb-Apr 2020	1.336 million	Jan-Mar 2020 (1.348 million)	Oct-Dec 2019 (1.29 million)	Jan-Mar 1971
Unemployment rate (aged 16 and over)	Feb-Apr 2020	3.9%	Dec-Feb 2020 (4%)	Oct-Dec 2019 (3.8%)	Jan-Mar 1971
Inactivity level (aged 16 to 64)	Feb-Apr 2020	8.47 million	Oct-Dec 2019 (8.478 million)	Jan-Mar 2020 (8.353 million)	Jan-Mar 1971
Inactivity rate (aged 16 to 64)	Feb-Apr 2020	20.5%	Sep-Nov 2019 (20.6%)	Jan-Mar 2020 (20.2%)	Jan-Mar 1971
Average Earnings (total pay - nominal)	Feb-Apr 2020	1.0%	Jan-Mar 2020 (2.3%)	Jul-Sep 2014 (0.9%)	Jan-Mar 2001
Average Earnings (regular pay - nominal)	Feb-Apr 2020	1.7%	Jan-Mar 2020 (2.7%)	Nov-Jan 2015 (1.5%)	Jan-Mar 2001
Average Earnings (total pay - real)	Feb-Apr 2020	-0.4%	Jan-Mar 2020 (0.7%)	Jul-Sep 2017 (-0.5%)	Jan-Mar 2001
Average Earnings (regular pay - real)	Feb-Apr 2020	0.4%	Jan-Mar 2020 (1.0%)	Dec-Feb 2018 (0.1%)	Jan-Mar 2001
Vacancies level	Mar-May 2020	476,000	Feb-Apr 2020 (641,000)	Apr-Jun 2012 (475,000)	Apr-Jun 2001

SUMMARY

1 Summary of headline LFS¹ indicators

United Kingdom (thousands) seasonally adjusted

	LFS household population ¹				Headline indicators			
					Employment		Unemployment	
							Inactivity	
					Level	Rate ²	Level	Rate ³
	All aged 16 & over	All aged 16 to 64	All aged 16 & over	All aged 16 to 64	All aged 16 & over	All aged 16 & over	All aged 16 to 64	All aged 16 to 64
	MGSL	LF2O	MGRZ	LF24	MGSC	MG SX	LF2M	LF2S
People								
Feb-Apr 2018	52,953	41,227	32,389	75.6	1,416	4.2	8,668	21.0
Feb-Apr 2019	53,229	41,310	32,746	76.1	1,304	3.8	8,581	20.8
May-Jul 2019	53,298	41,330	32,777	76.1	1,294	3.8	8,587	20.8
Aug-Oct 2019	53,368	41,355	32,801	76.2	1,281	3.8	8,606	20.8
Nov-Jan 2020	53,439	41,379	32,985	76.5	1,343	3.9	8,431	20.4
Feb-Apr 2020	53,509	41,404	32,991	76.4	1,336	3.9	8,470	20.5
Change on quarter	70	24	6	-0.1	-8	0.0	39	0.1
Change %	0.1	0.1	0.0		-0.6		0.5	
Change on year	280	93	245	0.3	31	0.1	-111	-0.3
Change %	0.5	0.2	0.7		2.4		-1.3	
Men	MGSM	YBTG	MGSA	MGSV	MGSD	MG SY	YBSO	YBTM
Feb-Apr 2018	25,902	20,497	17,128	80.0	767	4.3	3,354	16.4
Feb-Apr 2019	26,056	20,550	17,290	80.3	719	4.0	3,341	16.3
May-Jul 2019	26,093	20,562	17,261	80.2	710	4.0	3,364	16.4
Aug-Oct 2019	26,132	20,576	17,315	80.4	715	4.0	3,340	16.2
Nov-Jan 2020	26,170	20,591	17,327	80.4	748	4.1	3,300	16.0
Feb-Apr 2020	26,209	20,605	17,247	80.1	738	4.1	3,386	16.4
Change on quarter	39	14	-80	-0.4	-10	0.0	86	0.4
Change %	0.1	0.1	-0.5		-1.3		2.6	
Change on year	153	55	-43	-0.2	19	0.1	45	0.2
Change %	0.6	0.3	-0.3		2.7		1.4	
Women	MGSN	LF2P	MGSB	LF25	MGSE	MGSZ	LF2N	LF2T
Feb-Apr 2018	27,051	20,730	15,261	71.3	649	4.1	5,313	25.6
Feb-Apr 2019	27,173	20,760	15,456	72.0	586	3.7	5,240	25.2
May-Jul 2019	27,204	20,768	15,517	72.1	583	3.6	5,223	25.2
Aug-Oct 2019	27,236	20,778	15,487	72.0	566	3.5	5,266	25.3
Nov-Jan 2020	27,268	20,789	15,658	72.5	595	3.7	5,130	24.7
Feb-Apr 2020	27,300	20,799	15,744	72.7	597	3.7	5,084	24.4
Change on quarter	32	10	86	0.2	2	0.0	-46	-0.2
Change %	0.1	0.0	0.5		0.4		-0.9	
Change on year	127	38	288	0.7	12	0.0	-156	-0.8
Change %	0.5	0.2	1.9		2.0		-3.0	

Source: Labour Force Survey

Labour market statistics enquiries: labour.market@ons.gov.uk

1. The Labour Force Survey (LFS) is a survey of households in the UK.

2. The headline employment rate is the number of people aged 16 to 64 in employment divided by the population aged 16 to 64.

3. The headline unemployment rate is the number of unemployed people (aged 16+) divided by the economically active population (aged 16+). The economically active population is defined as those in employment plus those who are unemployed.

4. The headline inactivity rate is the number of people aged 16 to 64 divided by the population aged 16-64.

Note on headline employment, unemployment and inactivity rates

The headline employment and inactivity rates are based on the population aged 16 to 64 but the headline unemployment rate is based on the economically active population aged 16 and over. The employment and inactivity rates for those aged 16 and over are affected by the inclusion of the retired population in the denominators and are therefore less meaningful than the rates for those aged from 16 to 64. However, for the unemployment rate for those aged 16 and over, no such effect occurs as the denominator for the unemployment rate is the economically active population which only includes people in work or actively seeking and able to work.

Note on headline employment, unemployment and inactivity levels

The headline employment and unemployment levels are for those aged 16 and over; they measure all people in work or actively seeking and able to work. However, the headline inactivity level is for those aged 16 to 64. The inactivity rate for those aged 16 and over is less meaningful as it includes elderly people who have retired from the labour force.

SUMMARY

2(1) Labour market status by age group

United Kingdom (thousands) seasonally adjusted

	Aged 16 and over						Aged 16-64					
	Employment		Unemployment		Inactivity		Employment		Unemployment		Inactivity	
	Level	Rate	Level	Rate	Level	Rate	Level	Rate	Level	Rate	Level	Rate
People	MGRZ	MGSR	MGSC	MG SX	MGSI	YBTC	LF2G	LF24	LF2I	LF2Q	LF2M	LF2S
Feb-Apr 2018	32,389	61.2	1,416	4.2	19,148	36.2	31,165	75.6	1,394	4.3	8,668	21.0
Feb-Apr 2019	32,746	61.5	1,304	3.8	19,179	36.0	31,443	76.1	1,287	3.9	8,581	20.8
May-Jul 2019	32,777	61.5	1,294	3.8	19,227	36.1	31,463	76.1	1,280	3.9	8,587	20.8
Aug-Oct 2019	32,801	61.5	1,281	3.8	19,286	36.1	31,493	76.2	1,256	3.8	8,606	20.8
Nov-Jan 2020	32,985	61.7	1,343	3.9	19,111	35.8	31,637	76.5	1,311	4.0	8,431	20.4
Feb-Apr 2020	32,991	61.7	1,336	3.9	19,183	35.8	31,620	76.4	1,314	4.0	8,470	20.5
Change on quarter	6	-0.1	-8	0.0	72	0.1	-18	-0.1	3	0.0	39	0.1
Change %	0.0		-0.6		0.4		-0.1		0.2		0.5	
Change on year	245	0.1	31	0.1	4	-0.2	177	0.3	27	0.1	-111	-0.3
Change %	0.7		2.4		0.0		0.6		2.1		-1.3	
Men	MGSA	MGSS	MGSD	MG SY	MG SJ	YBTD	YBSF	MG SV	YBSI	YBTJ	YBSO	YBTM
Feb-Apr 2018	17,128	66.1	767	4.3	8,007	30.9	16,390	80.0	753	4.4	3,354	16.4
Feb-Apr 2019	17,290	66.4	719	4.0	8,047	30.9	16,500	80.3	709	4.1	3,341	16.3
May-Jul 2019	17,261	66.1	710	4.0	8,123	31.1	16,497	80.2	701	4.1	3,364	16.4
Aug-Oct 2019	17,315	66.3	715	4.0	8,103	31.0	16,538	80.4	699	4.1	3,340	16.2
Nov-Jan 2020	17,327	66.2	748	4.1	8,096	30.9	16,565	80.4	725	4.2	3,300	16.0
Feb-Apr 2020	17,247	65.8	738	4.1	8,224	31.4	16,495	80.1	724	4.2	3,386	16.4
Change on quarter	-80	-0.4	-10	0.0	128	0.4	-70	-0.4	-1	0.0	86	0.4
Change %	-0.5		-1.3		1.6		-0.4		-0.1		2.6	
Change on year	-43	-0.6	19	0.1	177	0.5	-5	-0.2	15	0.1	45	0.2
Change %	-0.3		2.7		2.2		0.0		2.1		1.4	
Women	MGSA	MGSS	MGSD	MG SY	MG SJ	YBTD	YBSF	LF25	LF2J	LF2R	LF2N	LF2T
Feb-Apr 2018	15,261	56.4	649	4.1	11,141	41.2	14,775	71.3	641	4.2	5,313	25.6
Feb-Apr 2019	15,456	56.9	586	3.7	11,132	41.0	14,943	72.0	578	3.7	5,240	25.2
May-Jul 2019	15,517	57.0	583	3.6	11,104	40.8	14,966	72.1	579	3.7	5,223	25.2
Aug-Oct 2019	15,487	56.9	566	3.5	11,184	41.1	14,955	72.0	557	3.6	5,266	25.3
Nov-Jan 2020	15,658	57.4	595	3.7	11,015	40.4	15,072	72.5	586	3.7	5,130	24.7
Feb-Apr 2020	15,744	57.7	597	3.7	10,958	40.1	15,125	72.7	590	3.8	5,084	24.4
Change on quarter	86	0.2	2	0.0	-56	-0.3	53	0.2	4	0.0	-46	-0.2
Change %	0.5		0.4		-0.5		0.3		0.6		-0.9	
Change on year	288	0.8	12	0.0	-173	-0.8	182	0.7	12	0.0	-156	-0.8
Change %	1.9		2.0		-1.6		1.2		2.1		-3.0	
	Aged 16-17						Aged 18-24					
	Employment		Unemployment		Inactivity		Employment		Unemployment		Inactivity	
	Level	Rate	Level	Rate	Level	Rate	Level	Rate	Level	Rate	Level	Rate
People	YBTO	YBUA	YBVH	YBVK	YCAS	LWEX	YBTR	YBUD	YBVN	YBVQ	YCAV	LWFA
Feb-Apr 2018	348	24.8	114	24.7	940	67.1	3,504	62.4	401	10.3	1,709	30.4
Feb-Apr 2019	339	24.3	86	20.3	967	69.5	3,470	62.7	394	10.2	1,672	30.2
May-Jul 2019	351	25.2	84	19.3	957	68.8	3,430	62.2	404	10.5	1,681	30.5
Aug-Oct 2019	348	24.9	87	20.0	965	68.9	3,411	62.1	386	10.2	1,699	30.9
Nov-Jan 2020	339	24.0	96	22.1	975	69.2	3,482	63.6	410	10.5	1,583	28.9
Feb-Apr 2020	321	22.6	112	25.8	987	69.5	3,463	63.5	416	10.7	1,576	28.9
Change on quarter	-17	-1.4	16	3.7	11	0.3	-19	-0.1	6	0.2	-7	0.0
Change %	-5.2		16.1		1.1		-0.5		1.4		-0.5	
Change on year	-18	-1.7	25	5.5	20	0.0	-7	0.8	22	0.5	-96	-1.3
Change %	-5.2		29.4		2.0		-0.2		5.6		-5.7	
Men	YBTP	YBUB	YBVI	YBVL	YCAT	LWEY	YBTS	YBUE	YBVO	YBVR	YCAW	LWFB
Feb-Apr 2018	170	23.7	59	25.6	489	68.2	1,812	63.2	233	11.4	821	28.6
Feb-Apr 2019	160	22.4	45	22.1	508	71.2	1,764	62.4	248	12.3	816	28.9
May-Jul 2019	164	23.0	46	22.0	502	70.5	1,745	61.9	246	12.3	826	29.3
Aug-Oct 2019	157	21.9	52	25.1	508	70.8	1,767	63.0	225	11.3	813	29.0
Nov-Jan 2020	148	20.5	56	27.5	518	71.7	1,798	64.3	242	11.9	755	27.0
Feb-Apr 2020	145	20.0	65	30.8	517	71.1	1,786	64.1	229	11.3	771	27.7
Change on quarter	-3	-0.5	9	3.4	-1	-0.7	-12	-0.2	-14	-0.5	15	0.7
Change %	-1.8		15.7		-0.3		-0.7		-5.6		2.0	
Change on year	-14	-2.4	19	8.7	9	-0.1	23	1.8	-20	-1.0	-45	-1.2
Change %	-9.0		42.8		1.8		1.3		-7.9		-5.5	
Women	YBTQ	YBUC	YBVJ	YBVM	YCAU	LWEZ	YBTT	YBUF	YBVP	YBVS	YCAC	LWFC
Feb-Apr 2018	178	26.0	56	23.8	451	65.9	1,692	61.6	168	9.0	888	32.3
Feb-Apr 2019	179	26.4	41	18.6	459	67.6	1,707	63.0	146	7.9	856	31.6
May-Jul 2019	187	27.5	37	16.7	454	67.0	1,685	62.4	158	8.6	855	31.7
Aug-Oct 2019	191	28.0	35	15.3	457	66.9	1,643	61.1	160	8.9	886	32.9
Nov-Jan 2020	190	27.7	40	17.4	457	66.5	1,683	62.8	168	9.1	828	30.9
Feb-Apr 2020	176	25.4	47	21.1	470	67.9	1,677	62.8	188	10.1	805	30.2
Change on quarter	-15	-2.3	7	3.7	13	1.4	-6	0.0	20	1.0	-23	-0.7
Change %	-7.8		16.8		2.8		-0.4		11.6		-2.8	
Change on year	-3	-1.0	6	2.5	11	0.2	-30	-0.2	42	2.2	-51	-1.5
Change %	-1.9		14.6		2.3		-1.7		28.6		-6.0	

SUMMARY

2(2) Labour market status by age group

United Kingdom (thousands) seasonally adjusted

	Aged 25-34						Aged 35-49					
	Employment		Unemployment		Inactivity		Employment		Unemployment		Inactivity	
	Level	Rate	Level	Rate	Level	Rate	Level	Rate	Level	Rate	Level	Rate
People	YBTU	YBUG	YCGM	YCGP	YCAV	LWFD	YBTX	YBUJ	YCGS	YCGV	YCBB	LWFG
Feb-Apr 2018	7,447	83.5	284	3.7	1,183	13.3	10,894	85.2	308	2.7	1,588	12.4
Feb-Apr 2019	7,564	84.5	250	3.2	1,139	12.7	10,871	85.3	293	2.6	1,574	12.4
May-Jul 2019	7,557	84.3	265	3.4	1,141	12.7	10,867	85.4	269	2.4	1,590	12.5
Aug-Oct 2019	7,591	84.7	257	3.3	1,111	12.4	10,892	85.6	260	2.3	1,573	12.4
Nov-Jan 2020	7,615	85.0	258	3.3	1,084	12.1	10,896	85.6	276	2.5	1,551	12.2
Feb-Apr 2020	7,621	85.1	255	3.2	1,077	12.0	10,884	85.6	281	2.5	1,557	12.2
Change on quarter	7	0.1	-3	0.0	-7	-0.1	-12	-0.1	4	0.0	6	0.0
Change %	0.1		-1.3		-0.6		-0.1		1.6		0.4	
Change on year	57	0.6	4	0.0	-62	-0.7	13	0.2	-13	-0.1	-18	-0.1
Change %	0.8		1.8		-5.5		0.1		-4.3		-1.1	
Men	YBTU	YBUH	YCGN	YCGQ	YCAZ	LWFE	YBTY	YBUK	YCGT	YCGW	YCBC	LWFH
Feb-Apr 2018	4,004	89.7	151	3.6	307	6.9	5,730	90.8	144	2.5	438	6.9
Feb-Apr 2019	4,061	90.4	135	3.2	299	6.7	5,739	91.2	134	2.3	417	6.6
May-Jul 2019	4,047	89.9	145	3.4	311	6.9	5,743	91.4	123	2.1	418	6.7
Aug-Oct 2019	4,055	90.1	142	3.4	306	6.8	5,758	91.6	120	2.0	406	6.5
Nov-Jan 2020	4,066	90.3	140	3.3	298	6.6	5,723	91.1	136	2.3	425	6.8
Feb-Apr 2020	4,043	89.7	125	3.0	337	7.5	5,690	90.6	154	2.6	440	7.0
Change on quarter	-23	-0.5	-15	-0.3	39	0.9	-32	-0.5	18	0.3	15	0.2
Change %	-0.6		-10.7		13.0		-0.6		13.2		3.4	
Change on year	-18	-0.6	-10	-0.2	38	0.8	-48	-0.7	20	0.4	23	0.4
Change %	-0.4		-7.2		12.8		-0.8		15.0		5.4	
Women	YBTU	YBUH	YCGN	YCGQ	YCAZ	LWFE	YBTY	YBUL	YCGU	YCGX	YCBD	LWFI
Feb-Apr 2018	3,443	77.3	133	3.7	877	19.7	5,164	79.7	164	3.1	1,150	17.7
Feb-Apr 2019	3,503	78.6	116	3.2	840	18.8	5,133	79.6	159	3.0	1,157	17.9
May-Jul 2019	3,510	78.7	120	3.3	830	18.6	5,125	79.5	146	2.8	1,171	18.2
Aug-Oct 2019	3,536	79.3	115	3.2	805	18.1	5,134	79.7	140	2.6	1,166	18.1
Nov-Jan 2020	3,549	79.7	118	3.2	785	17.6	5,173	80.3	140	2.6	1,126	17.5
Feb-Apr 2020	3,578	80.4	130	3.5	740	16.6	5,194	80.7	127	2.4	1,117	17.3
Change on quarter	29	0.7	12	0.3	-45	-1.0	21	0.3	-14	-0.3	-9	-0.1
Change %	0.8		9.7		-5.8		0.4		-9.6		-0.8	
Change on year	75	1.9	14	0.3	-101	-2.2	61	1.1	-33	-0.6	-41	-0.6
Change %	2.2		12.2		-12.0		1.2		-20.5		-3.5	
	Aged 50-64						Age 65+					
	Employment		Unemployment		Inactivity		Employment		Unemployment		Inactivity	
	Level	Rate	Level	Rate	Level	Rate	Level	Rate	Level	Rate	Level	Rate
People	LF26	LF2U	LF28	LF2E	LF2A	LF2W	LFK4	LFK6	K5HU	K5HW	LFL4	LFL6
Feb-Apr 2018	8,973	71.7	287	3.1	3,248	26.0	1,224	10.4	22	1.7	10,480	89.4
Feb-Apr 2019	9,198	72.5	263	2.8	3,228	25.4	1,303	10.9	17	1.3	10,598	88.9
May-Jul 2019	9,258	72.7	259	2.7	3,218	25.3	1,314	11.0	14	1.0	10,640	88.9
Aug-Oct 2019	9,250	72.4	267	2.8	3,257	25.5	1,309	10.9	24	1.8	10,681	88.9
Nov-Jan 2020	9,307	72.6	271	2.8	3,238	25.3	1,348	11.2	32	2.3	10,680	88.6
Feb-Apr 2020	9,330	72.6	251	2.6	3,274	25.5	1,371	11.3	22	1.6	10,713	88.5
Change on quarter	23	0.0	-20	-0.2	36	0.2	24	0.2	-10	-0.8	33	-0.1
Change %	0.3		-7.4		1.1		1.8		-32.2		0.3	
Change on year	132	0.1	-12	-0.2	46	0.0	68	0.4	4	0.2	114	-0.4
Change %	1.4		-4.7		1.4		5.2		24.9		1.1	
Men	MGUX	YBUN	MGVM	MGXF	MGWB	LWFK	MGVA	YBUQ	MGVP	MGXI	MGWE	LWFN
Feb-Apr 2018	4,674	76.1	166	3.4	1,299	21.2	738	13.7	14	1.8	4,652	86.1
Feb-Apr 2019	4,777	76.7	147	3.0	1,301	20.9	790	14.3	10	1.2	4,707	85.5
May-Jul 2019	4,799	76.8	142	2.9	1,306	20.9	763	13.8	9	1.2	4,759	86.0
Aug-Oct 2019	4,800	76.6	159	3.2	1,306	20.8	777	14.0	16	2.0	4,763	85.7
Nov-Jan 2020	4,830	76.9	151	3.0	1,303	20.7	762	13.6	23	2.9	4,795	85.9
Feb-Apr 2020	4,830	76.6	152	3.0	1,321	21.0	752	13.4	14	1.8	4,838	86.3
Change on quarter	0	-0.2	1	0.0	18	0.2	-10	-0.2	-9	-1.1	43	0.4
Change %	0.0		0.5		1.4		-1.3		-38.3		0.9	
Change on year	53	-0.1	5	0.1	20	0.1	-38	-0.9	4	0.6	132	0.9
Change %	1.1		3.3		1.5		-4.8		44.7		2.8	
Women	LF27	LF2V	LF29	LF2F	LF2B	LF2X	LFK5	LFK7	K5HV	K5HX	LFL5	LFL7
Feb-Apr 2018	4,299	67.5	121	2.7	1,948	30.6	486	7.7	8	1.6	5,828	92.2
Feb-Apr 2019	4,421	68.4	116	2.6	1,927	29.8	514	8.0	8	1.4	5,892	91.9
May-Jul 2019	4,459	68.7	117	2.6	1,912	29.5	551	8.6	*	*	5,881	91.4
Aug-Oct 2019	4,450	68.4	107	2.4	1,951	30.0	531	8.2	9	1.6	5,918	91.6
Nov-Jan 2020	4,477	68.5	119	2.6	1,934	29.6	586	9.0	9	1.5	5,885	90.8
Feb-Apr 2020	4,500	68.7	99	2.1	1,953	29.8	620	9.5	8	1.2	5,874	90.4
Change on quarter	24	0.1	-21	-0.5	18	0.2	33	0.5	-1	-0.3	-10	-0.5
Change %	0.5		-17.3		0.9		5.7		-16.5		-0.2	
Change on year	79	0.3	-17	-0.4	26	0.0	106	1.5	0	-0.3	-17	-1.5
Change %	1.8		-14.8		1.3		20.6		-0.6		-0.3	

Source: Labour Force Survey

Labour market statistics enquiries: labour.market@ons.gov.uk

EMPLOYMENT AND JOBS

3 Full-time, part-time and temporary workers

United Kingdom (thousands of people aged 16 and over)
seasonally adjusted

	All in employment					Full-time and part-time workers ¹							
	Total	Employees	Self employed	Unpaid family workers	Government supported training & employment programmes ²	Total people working full-time	total people working part-time	Employees working full-time	Employees working part-time	Self-employed people working full-time	Self-employed people working part-time	Total Workers with second jobs	
													1
People	MGRZ	MGRN	MGRQ	MGRT	MGRW	YCBE	YCBH	YCBK	YCBN	YCBQ	YCBT	YCBW	
Feb-Apr 2018	32,389	27,423	4,812	108	46	23,747	8,642	20,363	7,061	3,336	1,476	1,132	
Feb-Apr 2019	32,746	27,665	4,913	132	37	24,149	8,597	20,632	7,033	3,471	1,442	1,125	
May-Jul 2019	32,777	27,671	4,928	126	53	24,172	8,605	20,661	7,009	3,456	1,472	1,147	
Aug-Oct 2019	32,801	27,660	4,960	126	55	24,238	8,564	20,712	6,948	3,483	1,477	1,139	
Nov-Jan 2020	32,985	27,760	5,033	134	58	24,463	8,522	20,851	6,908	3,556	1,477	1,171	
Feb-Apr 2020	32,991	27,928	4,902	108	53	24,396	8,595	20,926	7,001	3,413	1,489	1,187	
Change on quarter	6	168	-131	-26	-5	-67	74	75	93	-142	12	16	
Change %	0.0	0.6	-2.6	-19.3	-9.3	-0.3	0.9	0.4	1.3	-4.0	0.8	1.4	
Change on year	245	263	-11	-23	16	246	-1	294	-31	-58	47	62	
Change %	0.7	1.0	-0.2	-17.8	44.6	1.0	0.0	1.4	-0.4	-1.7	3.3	5.5	
Men	MGSA	MGRQ	MGRR	MGRU	MGRX	YCBF	YCBJ	YCBL	YCBP	YCBR	YCBU	YCBX	
Feb-Apr 2018	17,128	13,884	3,175	42	26	14,848	2,280	12,219	1,666	2,600	575	476	
Feb-Apr 2019	17,290	13,915	3,289	67	19	15,010	2,280	12,301	1,614	2,686	603	472	
May-Jul 2019	17,261	13,893	3,276	57	35	15,024	2,237	12,305	1,587	2,683	593	475	
Aug-Oct 2019	17,315	13,926	3,295	63	30	15,063	2,251	12,336	1,591	2,701	594	486	
Nov-Jan 2020	17,327	13,918	3,318	61	29	15,110	2,217	12,344	1,574	2,732	587	490	
Feb-Apr 2020	17,247	13,968	3,198	53	28	15,047	2,200	12,419	1,549	2,598	600	497	
Change on quarter	-80	50	-121	-8	-1	-63	-17	75	-25	-133	13	7	
Change %	-0.5	0.4	-3.6	-13.1	-3.9	-0.4	-0.8	0.6	-1.6	-4.9	2.2	1.4	
Change on year	-43	53	-92	-14	10	37	-80	118	-65	-88	-4	25	
Change %	-0.3	0.4	-2.8	-20.8	51.4	0.2	-3.5	1.0	-4.0	-3.3	-0.6	5.4	
Women	MGSB	MGRP	MGRS	MGRV	MGRY	YCBG	YCBJ	YCBM	YCBP	YCBS	YCBV	YCBY	
Feb-Apr 2018	15,261	13,539	1,637	66	20	8,900	6,361	8,144	5,395	736	900	656	
Feb-Apr 2019	15,456	13,750	1,624	65	18	9,139	6,317	8,331	5,419	785	839	653	
May-Jul 2019	15,517	13,778	1,652	69	18	9,148	6,368	8,356	5,422	773	879	673	
Aug-Oct 2019	15,487	13,734	1,665	63	25	9,174	6,313	8,376	5,358	782	883	652	
Nov-Jan 2020	15,658	13,842	1,714	73	29	9,353	6,305	8,507	5,335	824	890	681	
Feb-Apr 2020	15,744	13,960	1,704	55	25	9,349	6,395	8,507	5,453	815	889	690	
Change on quarter	86	118	-10	-18	-4	-4	91	0	118	-9	-1	9	
Change %	0.5	0.9	-0.6	-24.5	-14.8	0.0	1.4	0.0	2.2	-1.1	-0.1	1.4	
Change on year	288	210	81	-9	7	210	79	176	34	30	51	37	
Change %	1.9	1.5	5.0	-14.6	37.6	2.3	1.2	2.1	0.6	3.8	6.0	5.6	
Temporary employees (reasons for temporary working)													
	Part-time workers (reasons for working part-time) ³												
	Total	Total as % of all employees	Could not find permanent job	% that could not find permanent job	Did not want permanent job	Had a contract with period of training	Some other reason	Total	Could not find full-time job	% that could not find full-time job	Did not want full-time job	Ill or disabled	Student or at school
	13	14	15	16	17	18	19	20	21	22	23	24	25
People	YCBZ	YCCC	YCCF	YCCI	YCCL	YCCO	YCCR	YCCU	YCCX	YCDA	YCDD	YCDG	YCDJ
Feb-Apr 2018	1,569	5.7	449	28.6	443	157	520	8,536	1,006	11.8	6,118	249	1,111
Feb-Apr 2019	1,486	5.4	375	25.2	446	131	534	8,475	933	11.0	6,121	284	1,072
May-Jul 2019	1,424	5.1	357	25.0	410	124	533	8,481	890	10.5	6,133	278	1,116
Aug-Oct 2019	1,423	5.1	364	25.6	370	131	557	8,425	875	10.4	6,122	275	1,095
Nov-Jan 2020	1,446	5.2	363	25.1	410	122	551	8,385	909	10.8	6,048	297	1,081
Feb-Apr 2020	1,517	5.4	411	27.1	421	114	571	8,490	881	10.4	6,132	320	1,106
Change on quarter	71	0.2	49	2.0	10	-8	20	105	-28	-0.5	84	23	25
Change %	4.9		13.4		2.5	-6.7	3.6	1.3	-3.1		1.4	7.7	2.3
Change on year	31	0.1	37	1.9	-25	-17	37	16	-52	-0.6	11	36	34
Change %	2.1		9.8		-5.7	-12.8	6.9	0.2	-5.5		0.2	12.8	3.2
Men	YCCA	YCCG			YCCM	YCCP	YCCS	YCCV	YCCY	YCDB	YCDE	YCDH	YCDK
Feb-Apr 2018	751	5.4	236	31.4	191	86	238	2,241	459	20.5	1,197	84	485
Feb-Apr 2019	679	4.9	198	29.2	190	62	228	2,217	406	18.3	1,260	93	432
May-Jul 2019	647	4.7	183	28.2	164	60	241	2,180	370	17.0	1,255	92	439
Aug-Oct 2019	673	4.8	186	27.7	158	69	259	2,184	374	17.1	1,262	89	437
Nov-Jan 2020	687	4.9	175	25.5	189	64	259	2,160	375	17.3	1,243	102	426
Feb-Apr 2020	702	5.0	201	28.6	184	51	266	2,148	362	16.9	1,226	110	436
Change on quarter	15	0.1	26	3.2	-5	-13	7	-12	-12	-0.5	-17	8	10
Change %	2.1		14.9		-2.6	-20.5	2.6	-0.6	-3.3		-1.4	7.9	2.3
Change on year	23	0.1	3	-0.6	-6	-11	38	-69	-44	-1.4	-35	17	4
Change %	3.3		1.3		-3.2	-18.4	16.5	-3.1	-10.8		-2.7	18.2	0.8
Women	YCCB	YCCE	YCCH	YCCK	YCCN	YCCQ	YCCO	YCCW	YCCZ	YCDC	YCDE	YCDI	YCDL
Feb-Apr 2018	818	6.0	213	26.1	252	71	282	6,295	548	8.7	4,921	166	627
Feb-Apr 2019	806	5.9	176	21.9	256	68	306	6,257	527	8.4	4,861	191	640
May-Jul 2019	777	5.6	174	22.4	247	64	292	6,301	520	8.3	4,878	186	677
Aug-Oct 2019	750	5.5	178	23.7	212	62	298	6,241	501	8.0	4,860	186	658
Nov-Jan 2020	759	5.5	188	24.8	221	58	291	6,225	535	8.6	4,806	196	655
Feb-Apr 2020	815	5.8	210	25.8	237	63	305	6,342	519	8.2	4,907	210	671
Change on quarter	56	0.4	23	1.1	15	5	13	117	-16	-0.4	101	15	15
Change %	7.4		12.0		7.0	8.5	4.6	1.9	-3.0		2.1	7.6	2.3
Change on year	9	0.0	34	4.0	-19	-5	-1	84	-8	-0.2	46	19	31
Change %	1.1		19.4		-7.5	-7.6	-0.3	1.3	-1.5		0.9	10.2	4.8

Relationship between columns: 1= 2+3+4+5; 1=6+7; 2=8+9; 3=10+11; 13=15+17+18+19; 20=9+11 ;14=13/2; 16=15/13; 22=21/20

1. The split between full-time and part-time employment is based on respondents' self-classification.

2. This series does not include all people on these programmes; it only includes those engaging in any form of work, work experience or work-related training.

3. These series cover Employees and Self-employed only. These series include some temporary employees recorded in columns 13 to 19.

4. The total includes those who did not give a reason for working part-time and it therefore does not equal the sum of columns 21, 23, 24 and 25.

Source: Labour Force Survey

Labour market statistics enquiries: labour.market@ons.gov.uk

EMPLOYMENT AND JOBS

4 Public and private sector employment

United Kingdom (thousands of people aged 16 and over), seasonally adjusted									
Public sector		Private sector ¹		Total employment ²	Public sector excluding effects of major reclassifications (See Explanatory note at bottom of table)		Private sector excluding effects of major reclassifications (See Explanatory note at bottom of table)		
(000s)	(%)	(000s)	(%)	(000s)	(000s)	(%)	(000s)	(%)	
1	2	3	4	5	6	7	8	9	
G7AU	G9BZ	G7K5	G9C2	G7GO	MFY7	MFY9	MFZ2	MFY5	
Dec 17	5,343	16.6	26,898	83.4	32,241	5,224	16.2	27,017	83.8
Mar 18	5,351	16.5	27,038	83.5	32,389	5,233	16.2	27,156	83.8
Jun 18	5,352	16.5	27,056	83.5	32,408	5,247	16.2	27,161	83.8
Sep 18	5,345	16.5	27,147	83.5	32,492	5,257	16.2	27,235	83.8
Dec 18	5,359	16.4	27,355	83.6	32,714	5,271	16.1	27,443	83.9
Mar 19	5,374 r	16.4	27,372 r	83.6	32,746	5,286 r	16.1	27,460 r	83.9
Jun 19	5,398	16.5	27,379	83.5	32,777	5,307	16.2	27,470	83.8
Sep 19	5,423	16.5	27,378	83.5	32,801	5,336	16.3	27,465	83.7
Dec 19	5,439 r	16.5	27,546 r	83.5	32,985	5,351 r	16.2	27,634 r	83.8
Mar 20	5,465	16.6	27,526	83.4	32,991	5,375	16.3	27,616	83.7
Change on quarter	26	0.1	-20	-0.1	6	24	0.1	-18	-0.1
Change %	0.5	-	-0.1	-	0.0	0.4	-	-0.1	-
Change on year	91	0.2	154	-0.2	245	89	0.2	156	-0.2
Change %	1.7	-	0.6	-	0.7	1.7	-	0.6	-

Enquiries 01633 455400

Relationship between columns: 2 = 1/5*100; 3 = 5-1; 4 = 3/5*100, 5=6+8

Source: Labour Force Survey (LFS) and returns from public sector organisations

See footnotes under table 4(1)

4(1) Public sector employment by industry

United Kingdom (thousands of people aged 16 and over), seasonally adjusted

Construction	HM Forces ³	Police (including civilians)	Public administration	Of which: Civil Service ⁴	Education	National Health Service	Other health and social work	Other (including financial corporations)	Total public sector employment ⁵
1	2	3	4	5	6	7	8	9	10
G7ER	G7EU	G7EX	G7F2	G7D6	G7F5	G7FG	G7FJ	G7FM	G7AU
Dec 17	38	155	246	1,019	427	1,495	1,639	231	5,343
Mar 18	35	155	246	1,024	430	1,498	1,642	229	5,351
Jun 18	35	153	247	1,029	431	1,501	1,650	222	5,352
Sep 18	35	153	247	1,033	436	1,495	1,662	216	5,345
Dec 18	35	151	247	1,040	440	1,496	1,670	215	5,359
Mar 19	36	152 r	249	1,050 r	446	1,493 r	1,683	214 r	5,374
Jun 19	36	152	249	1,054	448	1,496	1,696	215	5,398
Sep 19	35	153	252	1,056	451	1,497	1,711	214	5,423
Dec 19	35	153	253 r	1,065	453	1,492 r	1,727 r	212 r	5,439
Mar 20	36	154	257	1,067	456	1,491	1,744	210	5,465
Change on quarter	1	1	4	2	3	-1	17	-2	26
Change %	2.9	0.7	1.6	0.2	0.7	-0.1	1.0	-0.9	0.5
Change on year	0	2	8	17	10	-2	61	-4	91
Change %	0.0	1.3	3.2	1.6	2.2	-0.1	3.6	-1.9	1.7

Enquiries 01633 455400

Source: returns from public sector organisations

Explanatory Note: The public and private sector employment series have been affected by a number of major reclassifications where bodies employing large numbers of people have moved between the public and private sectors. These major reclassifications are as follows:

Further Education corporations and Sixth Form College corporations in England are included in the private sector from June 2012 but in the public sector for earlier time periods.

Royal Mail plc is included in the private sector from December 2013 but in the public sector for earlier time periods.

Lloyds Banking Group plc is included in the public sector from December 2008 to December 2013 but in the private sector for earlier and later time periods.

Royal Bank of Scotland plc is included in the public sector from December 2008 but in the private sector for earlier time periods.

Network Rail is included in the private sector before December 2002. From December 2002 onwards it is included in the public sector (except for the period from June 2003 to March 2004, when it is included in the private sector).

Northern Rock is included in the public sector from December 2007 until December 2011 but in the private sector for earlier and later time periods.

Bradford and Bingley is included in the public sector from September 2008 but in the private sector for earlier time periods.

Welsh Further Education colleges are included in the private sector from March 2015 but in the public sector for earlier time periods.

Housing associations in England are included in the public sector between September 2008 and September 2017; they are in the private sector for earlier and later time periods.

Housing associations in Scotland are included in the public sector from September 2001 until June 2018; they are included in the private sector for earlier and later time periods.

Housing associations in Wales are included in the private sector from June 2018; they are included in the public sector for earlier time periods.

Housing associations in Northern Ireland are included in the public sector back to the start of the time series in March 1999.

The series shown at Table 4 (in columns 6 to 9) for public and private sector employment excluding the effects of major reclassifications show all of the above mentioned bodies included in the private sector for all time periods and excluded from the public sector for all time periods. When using figures from this table, the latest estimate of the number of people employed in the public and private sectors should be taken from columns 1 and 3 respectively. However the quarterly and annual changes in employment shown in these columns are affected by reclassifications. Figures from columns 6 and 8 should be used for assessments of the recent underlying changes in public and private sector employment. The changes in employment shown in these columns are measured on a consistent basis to remove the effect of major reclassifications.

1. Estimated as the difference between LFS total employment and the data from public sector organisations.

2. LFS employment data for March refer to February-April, June refers to May-July, September refers to August-October and December refers to November-January.

3. This series excludes locally engaged staff stationed outside the United Kingdom.

EMPLOYMENT AND JOBS

5 Workforce jobs

United Kingdom (thousands), seasonally adjusted

	Workforce jobs	Employee jobs	Self-employment jobs ¹	HM Forces	Government-supported trainees ¹
	1	2	3	4	5
	DYDC	BCAJ	DYZN	LOJX	LOJU
Mar 18	34,975	30,293	4,500	154	28
Jun 18	35,012	30,295	4,537	153	28
Sep 18	35,101	30,444	4,481	153	23
Dec 18	35,291	30,530	4,589	152	21
Mar 19	35,542	30,705	4,658	153	27
Jun 19	35,676	30,810	4,673	152	41
Sep 19	35,764	30,965	4,618	153	29
Dec 19 (r)	35,796	30,916	4,692	153	35
Mar 20 (p)²	35,832	31,097	4,549	154	31
Change on quarter	35	181	-143	1	-4
Change %	0.1	0.6	-3.0	0.9	-11.8
Change on year	289	392	-109	2	4
Change %	0.8	1.3	-2.3	1.2	15.5

Relationship between columns: 1=2+3+4+5

See footnotes under table 6

6 Workforce jobs by industry

Standard Industrial Classification (2007)

United Kingdom (thousands), seasonally adjusted

SIC 2007 sections	All jobs A-T	Agriculture, forestry & fishing A	Mining & quarrying B	Manufacturing C	Electricity, gas, steam & air conditioning supply D	Water supply, sewerage, waste & remediation activities E	Construction F	Wholesale & retail trade; repair of motor vehicles and motor cycles G	Transport & storage H	Accommodation & food service activities I	Information & communication J
	DYDC	JWR5	JWR6	JWR7	JWR8	JWR9	JWS2	JWS3	JWS4	JWS5	JWS6
Mar 18	34,975	413	62	2,697	147	226	2,315	4,996	1,696	2,398	1,478
Jun 18	35,012	407	63	2,713	150	227	2,310	4,997	1,733	2,432	1,478
Sep 18	35,101	410	61	2,695	154	227	2,322	4,998	1,741	2,419	1,462
Dec 18	35,291	375	59	2,686	149	231	2,343	5,000	1,799	2,452	1,480
Mar 19	35,542	386	60	2,717	143	241	2,344	5,017	1,784	2,456	1,508
Jun 19	35,676	391	58	2,709	145	243	2,305	5,010	1,825	2,495	1,513
Sep 19	35,764	408	57	2,717	144	246	2,265	4,979	1,805	2,492	1,524
Dec 19 (r)	35,796	413	59	2,698	150	241	2,294	4,969	1,795	2,510	1,532
Mar 20 (p)²	35,832	376	64	2,708	154	234	2,283	4,969	1,792	2,532	1,563
Change on quarter	35	-37	5	10	4	-7	-11	0	-3	22	30
Change %	0.1	-8.9	8.9	0.4	2.9	-2.9	-0.5	0.0	-0.1	0.9	2.0
Change on year	289	-11	4	-9	12	-7	-61	-48	9	75	55
Change %	0.8	-2.7	6.2	-0.3	8.1	-2.8	-2.6	-1.0	0.5	3.1	3.7

SIC 2007 sections	Financial & insurance activities K	Real estate activities L	Professional scientific & technical activities M	Administrative & support service activities N	Public admin & defence; compulsory social security ³ O	Education P	Human health & social work activities Q	Arts, entertainment & recreation R	Other service activities S	People employed by households, etc. T	Total services G-T
	JWS7	JWS8	JWS9	JWT2	JWT3	JWT4	JWT5	JWT6	JWT7	KW78	JWT8
Mar 18	1,125	591	3,031	3,014	1,486	2,939	4,359	1,006	937	59	29,115
Jun 18	1,111	564	3,037	3,030	1,493	2,935	4,335	1,005	925	68	29,143
Sep 18	1,123	587	3,093	3,046	1,495	2,937	4,350	1,000	919	60	29,231
Dec 18	1,118	597	3,143	3,031	1,506	2,954	4,359	1,014	947	49	29,448
Mar 19	1,126	582	3,210	3,036	1,513	2,963	4,413	1,026	960	59	29,652
Jun 19	1,123	593	3,251	3,042	1,511	2,952	4,463	1,016	967	63	29,826
Sep 19	1,128	627	3,247	3,062	1,523	2,971	4,491	1,026	994	56	29,927
Dec 19 (r)	1,121	652	3,229	3,043	1,532	2,975	4,476	1,036	1,017	54	29,942
Mar 20 (p)²	1,130	660	3,286	3,034	1,542	2,972	4,480	1,030	967	55	30,012
Change on quarter	9	8	57	-9	11	-3	4	-6	-50	1	71
Change %	0.8	1.2	1.8	-0.3	0.7	-0.1	0.1	-0.6	-4.9	1.8	0.2
Change on year	4	79	76	-2	29	9	67	4	7	-4	361
Change %	0.4	13.6	2.4	-0.1	1.9	0.3	1.5	0.4	0.7	-6.8	1.2

Workforce jobs enquiries 01633 456776

Sources: Employer surveys, Labour Force Survey and administrative sources

EMPLOYMENT AND JOBS

7 Actual weekly hours worked

United Kingdom (hours worked by people aged 16 and over), seasonally adjusted

Average (mean) actual weekly hours worked

	Total weekly hours (millions) ^{1,2}	All workers ¹	Full-time workers ³	Part-time workers ³	Second Jobs
People	YBUS	YBUV	YBUY	YBVB	YBVE
Feb-Apr 2018	1,029.6	31.8	36.9	16.3	10.0
Feb-Apr 2019	1,054.1	32.2	37.4	16.3	9.7
May-Jul 2019	1,049.8	32.0	37.2	16.3	9.7
Aug-Oct 2019	1,055.7	32.2	37.3	16.4	9.8
Nov-Jan 2020	1,051.1	31.9	36.9	16.1	9.8
Feb-Apr 2020	959.9	29.1	33.9	14.4	9.4
Change on quarter	-91.2	-2.8	-3.0	-1.8	-0.4
Change %	-8.7	-8.7	-8.1	-10.9	-4.0
Change on year	-94.2	-3.1	-3.5	-1.9	-0.3
Change %	-8.9	-9.6	-9.3	-11.8	-2.9
Men	YBUT	YBUW	YBUZ	YBVC	YBVF
Feb-Apr 2018	618.9	36.1	38.9	15.9	11.1
Feb-Apr 2019	629.5	36.4	39.1	16.3	10.7
May-Jul 2019	625.8	36.3	38.9	16.4	10.3
Aug-Oct 2019	628.3	36.3	39.0	16.2	10.6
Nov-Jan 2020	622.0	35.9	38.5	15.9	10.9
Feb-Apr 2020	569.2	33.0	35.1	14.0	10.6
Change on quarter	-52.9	-2.9	-3.4	-1.9	-0.4
Change %	-8.5	-8.1	-8.8	-12.0	-3.3
Change on year	-60.3	-3.4	-4.0	-2.3	-0.2
Change %	-9.6	-9.3	-10.2	-14.2	-1.4
Women	YBUU	YBUX	YBVA	YBVD	YBVG
Feb-Apr 2018	410.6	26.9	33.7	16.5	9.2
Feb-Apr 2019	424.6	27.5	34.6	16.3	9.0
May-Jul 2019	423.9	27.3	34.3	16.3	9.2
Aug-Oct 2019	427.4	27.6	34.7	16.4	9.2
Nov-Jan 2020	429.1	27.4	34.3	16.2	9.0
Feb-Apr 2020	390.7	24.8	31.9	14.5	8.6
Change on quarter	-38.3	-2.6	-2.3	-1.7	-0.4
Change %	-8.9	-9.4	-6.8	-10.5	-4.6
Change on year	-33.9	-2.7	-2.6	-1.8	-0.4
Change %	-8.0	-9.7	-7.6	-10.9	-4.2

Source: Labour Force Survey

Labour market statistics enquiries: labour.market@ons.gov.uk

1 Main and second job

2 Total actual weekly hours worked including paid and unpaid overtime.

3 Main job only. The split between full-time and part-time employment is based on respondents' self-classification.

7 (1) Usual weekly hours of work¹

United Kingdom, seasonally adjusted

	All in Employment (%)			Employees (%)			Self-Employed (%)		
	People	Men	Women	People	Men	Women	People	Men	Women
Feb-Apr 2019									
Less than 6 Hours	1.4	0.9	2.0	1.0	0.6	1.4	3.2	1.8	6.0
6 up to 15 hours	6.2	3.4	9.3	5.6	2.9	8.3	9.0	5.0	17.0
16 up to 30 hours	20.0	10.5	30.7	19.5	9.0	30.2	23.0	16.8	35.5
31 up to 45 hours	53.9	59.5	47.6	56.7	63.1	50.2	38.5	44.8	25.8
Over 45 hours	18.5	25.7	10.4	17.2	24.5	9.8	26.3	31.5	15.7
Total (thousands)	32,746	17,290	15,456	27,665	13,915	13,750	4,913	3,289	1,624
Nov-Jan 2020									
Less than 6 Hours	1.4	0.9	2.0	1.0	0.6	1.4	2.9	1.9	5.1
6 up to 15 hours	6.3	3.4	9.5	5.7	3.0	8.5	8.8	4.3	17.3
16 up to 30 hours	19.1	9.7	29.5	18.5	8.3	28.8	22.8	15.8	36.4
31 up to 45 hours	55.0	60.9	48.6	57.8	64.3	51.3	40.3	46.7	27.8
Over 45 hours	18.1	25.1	10.4	16.9	23.8	10.0	25.3	31.3	13.5
Total (thousands)	32,985	17,327	15,658	27,760	13,918	13,842	5,033	3,318	1,714
Feb-Apr 2020									
Less than 6 Hours	1.5	1.0	2.0	1.0	0.7	1.4	3.6	2.1	6.5
6 up to 15 hours	6.3	3.4	9.6	5.8	2.9	8.6	9.1	4.7	17.4
16 up to 30 hours	19.2	9.6	29.7	18.7	8.1	29.2	22.3	16.1	34.0
31 up to 45 hours	55.2	61.7	48.1	57.9	65.2	50.7	40.2	47.2	27.1
Over 45 hours	17.7	24.3	10.5	16.6	23.1	10.0	24.8	29.9	15.1
Total (thousands)	32,991	17,247	15,744	27,928	13,968	13,960	4,902	3,198	1,704

1 Total usual weekly hours worked by people aged 16 and over in main job including paid and unpaid overtime.

Source: Labour Force Survey

Labour market statistics enquiries: labour.market@ons.gov.uk

NON-UK WORKERS

8(1) Employment levels and rates by country of birth and nationality
(first published on 19 May 2020)

United Kingdom (thousands of people aged 16 and over) not seasonally adjusted																			
Europe										Africa			Asia			America and Oceania			
European Union (EU)																			
Total ¹	UK	Non UK	Total Europe	Total EU (EU27) ²	EU14 ³	EU8 ⁴	EU2 ⁵	Other EU ⁶	Other Europe (not in EU)	Total Africa	Of which: South Africa	Total Asia	Of which: India	Of which: Pakistan and Bangladesh	Total America and Oceania	Of which: USA	Of which: Australia and New Zealand	Total Non-EU ⁷	
Levels (aged 16 and over)																			
Country of birth levels	MGTM	JF6F	JF6G	FSC2	EQ4Q	JJR3	JJR5	EQ4R	FSC3	FSC4	FSC5	JJS3	FSD6	JJS7	JJS9	FSC7	JJR7	JJS5	EQ4S
Jan-Mar 2018	32,277	26,659	5,615	2,571	2,362	1,029	954	345	34	208	883	178	1,523	474	352	639	112	148	3,253
Jan-Mar 2019	32,641	26,838	5,796	2,666	2,420	994	947	438	41	246	933	200	1,536	452	366	662	108	139	3,376
Apr-Jun 2019	32,752	26,967	5,777	2,692	2,438	1,019	971	407	41	254	923	198	1,504	475	387	658	105	167	3,339
Jul-Sep 2019	32,802	27,028	5,770	2,630	2,368	1,020	953	356	40	261	962	176	1,532	483	373	646	93	166	3,401
Oct-Dec 2019	32,983	27,171	5,809	2,704	2,436	1,026	970	400	40	269	937	171	1,544	490	373	624	95	169	3,373
Jan-Mar 2020	33,113	27,244	5,861	2,736	2,457	1,044	962	413	38	279	927	185	1,573	523	359	626	93	167	3,404
Change on year	472	405	65	70	37	50	15	-24	-3	33	-6	-15	37	71	-6	-36	-15	28	28
Change %	1.4	1.5	1.1	2.6	1.5	5.0	1.6	-5.5	-7.9	13.2	-0.6	-7.3	2.4	15.7	-1.8	-5.4	-13.7	20.4	0.8
Country of birth rates																			
	LF9D	LFM6	LFM7	FSD5	EQ4Y	LFM8	LFM9	EQ4Z	FSD6	FSD7	FSD8	LFN4	FSD9	LFN6	LFN7	FSE2	LFN2	LFN5	EQ52
Jan-Mar 2018	75.4	75.8	73.8	80.6	81.9	79.0	85.4	82.1	73.8	68.1	71.6	81.3	64.4	77.3	56.3	77.5	77.3	81.7	68.7
Jan-Mar 2019	75.9	76.3	74.6	81.8	82.8	80.1	85.1	84.6	79.1	72.7	73.1	88.2	64.6	75.3	57.6	77.8	78.4	84.7	69.7
Apr-Jun 2019	76.0	76.3	74.6	82.2	83.1	80.2	85.2	86.2	78.3	74.4	73.2	87.4	63.4	75.5	59.0	78.6	73.9	87.7	69.3
Jul-Sep 2019	76.2	76.3	75.6	82.5	83.3	80.6	86.1	84.6	76.0	76.1	74.9	84.9	65.4	77.0	57.9	79.2	78.2	88.8	71.0
Oct-Dec 2019	76.6	76.8	75.6	82.0	83.1	80.9	85.7	82.7	78.0	73.5	74.2	82.3	65.7	78.7	56.7	80.2	79.1	87.8	70.9
Jan-Mar 2020	76.6	76.6	76.6	82.5	83.4	81.2	85.7	84.2	78.8	75.1	75.6	87.2	67.0	79.0	56.6	81.4	76.4	88.0	72.2
Change on year	0.6	0.4	1.9	0.7	0.6	1.1	0.6	-0.4	-0.3	2.4	2.5	-1.0	2.5	3.6	-1.0	3.6	-2.0	3.3	2.5
Nationality levels																			
	MGTM	JF6H	JF6I	FSC8	EQ4U	JJR4	JJR6	EQ4V	FSC9	FSCE	FSD2	JJS4	FSD3	JJS8	JJT2	FSD4	JJR8	JJS6	EQ4W
Jan-Mar 2018	32,277	28,753	3,520	2,364	2,283	1,003	916	353	11	80	273	59	553	187	98	330	97	97	1,237
Jan-Mar 2019	32,641	28,943	3,698	2,513	2,381	1,018	925	423	16	132	273	71	597	182	115	315	101	75	1,317
Apr-Jun 2019	32,752	29,084	3,661	2,490	2,368	1,019	952	375	22	122	289	63	567	187	121	314	78	95	1,292
Jul-Sep 2019	32,802	29,209	3,589	2,367	2,238	981	903	333	21	129	297	56	599	210	126	326	68	107	1,351
Oct-Dec 2019	32,983	29,325	3,654	2,439	2,310	994	931	367	17	129	298	68	602	199	126	316	75	107	1,344
Jan-Mar 2020	33,113	29,405	3,698	2,467	2,341	1,018	921	386	16	126	296	65	610	217	112	325	70	112	1,357
Change on year	472	462	0	-45	-40	1	-4	-36	0	-6	23	-7	13	35	-3	10	-31	37	40
Change %	1.4	1.6	0.0	-1.8	-1.7	0.1	-0.4	-8.6	-1.4	-4.3	8.2	-9.3	2.2	19.0	-2.7	3.2	-30.8	48.9	3.0
Nationality rates																			
	LF9D	LFN8	LFN9	FSE3	EQ54	LFO2	LFO3	EQ55	FSE4	FSE5	FSE6	LFO6	FSE7	LFO8	LFO9	FSE8	LFO4	LFO7	EQ56
Jan-Mar 2018	75.4	75.6	74.1	80.8	81.9	79.5	85.1	82.8	50.7	57.2	66.9	86.9	56.2	72.9	53.1	76.3	74.5	81.7	62.9
Jan-Mar 2019	75.9	76.1	75.3	82.1	82.7	79.9	85.0	84.9	75.0	72.9	68.8	91.4	57.2	70.6	50.9	76.9	78.3	82.7	64.8
Apr-Jun 2019	76.0	76.1	75.0	82.5	83.3	80.8	85.0	85.9	83.7	69.5	70.7	90.2	54.3	69.3	53.8	76.8	73.1	86.3	63.4
Jul-Sep 2019	76.2	76.2	76.2	82.5	82.8	80.3	85.5	83.5	83.7	76.3	71.8	87.1	59.4	73.1	55.4	78.1	74.2	92.0	67.2
Oct-Dec 2019	76.6	76.7	76.0	81.9	82.4	80.3	85.4	81.0	80.0	73.4	69.0	85.8	60.3	74.6	55.2	78.5	77.2	87.8	66.9
Jan-Mar 2020	76.6	76.6	76.8	82.4	83.0	80.7	85.4	83.8	76.7	72.3	67.3	90.6	62.7	77.6	53.4	80.2	72.8	86.8	68.1
Change on year	0.6	0.5	1.5	0.3	0.3	0.8	0.4	-1.1	1.7	-0.5	-1.5	-0.8	5.5	7.0	2.5	3.3	-5.5	4.1	3.3

Source: Labour Force Survey

1. The total series includes people who do not state their country of birth or nationality. The total levels series MGTM does not therefore equal the sum of the "UK" and "Non-UK" series.

2. This series consists of all 27 EU member states excluding the UK. This series equals the sum of EU14, EU8, EU2 and Other EU.

3. Austria, Belgium, Denmark, Finland, France, Germany, Greece, Ireland, Italy, Luxembourg, Netherlands, Portugal, Spain and Sweden.

4. Czech Republic, Estonia, Hungary, Latvia, Lithuania, Poland, Slovak Republic and Slovenia.

5. Romania and Bulgaria.

6. Cyprus, Malta and Croatia.

7. Total Non-EU equals the sum of Other Europe, Total Africa, Total Asia and Total America and Oceania.

The estimates shown in this table relate to the number of people in employment and should not be used as a proxy for flows of foreign migrants into the UK.

Labour market statistics enquiries: labour.market@ons.gov.uk

NON-UK WORKERS

8(2) Unemployment and economic inactivity levels and rates by country of birth

and nationality

(first published on 19 May 2020)

United Kingdom (thousands of people) not seasonally adjusted

United Kingdom (thousands of people) not seasonally adjusted

	Unemployment (all aged 16 and over)					Economically inactive (all aged from 16 to 64)									
	Total ¹	UK	Non-UK	EU27 ²	Non-EU	Total ¹		UK		Non-UK		EU27 ²		Non-EU	
						All economically inactive	Of which: Students ³	All economically inactive	Of which: Students ³	All economically inactive	Of which: Students ³	All economically inactive	Of which: Students ³	All economically inactive	Of which: Students ³
Levels (thousands of people)															
Country of birth levels	MGTP	DSWD	DT35	DT3F	DTKB	LF9L	LF9W	DTLK	DYUP	DYUR	DYVR	DYVZ	DYWL	DYWR	DZ37
Jan-Mar 2018	1,415	1,118	297	89	208	8,739	2,452	7,065	1,919	1,665	533	428	162	1,238	371
Jan-Mar 2019	1,292	1,013	279	84	195	8,663	2,373	6,992	1,851	1,654	521	409	159	1,245	362
Apr-Jun 2019	1,296	1,015	280	74	206	8,659	2,350	7,006	1,864	1,640	485	414	159	1,226	327
Jul-Sep 2019	1,374	1,115	259	72	187	8,503	2,089	6,933	1,687	1,556	401	395	125	1,161	276
Oct-Dec 2019	1,268	1,030	237	85	152	8,450	2,223	6,844	1,769	1,596	455	403	130	1,193	325
Jan-Mar 2020	1,347	1,076	271	88	183	8,377	2,244	6,870	1,821	1,483	422	391	130	1,091	292
Change on year	55	63	-8	4	-12	-286	-129	-122	-29	-172	-99	-18	-29	-154	-70
Change %	4.3	6.2	-2.9	4.7	-6.1	-3.3	-5.4	-1.8	-1.6	-10.4	-19.0	-4.3	-18.0	-12.4	-19.5
Country of birth rates	MGUK	DT2W	DT3B	DTJG	DTKD	CRZK		DYTD		DYUT		DYWD		DYWT	
Jan-Mar 2018	4.2	4.0	5.0	3.6	6.0	21.2		20.9		22.3		15.0		26.8	
Jan-Mar 2019	3.8	3.6	4.6	3.4	5.5	21.0		20.8		21.8		14.3		26.3	
Apr-Jun 2019	3.8	3.6	4.6	2.9	5.8	21.0		20.8		21.7		14.4		26.3	
Jul-Sep 2019	4.0	4.0	4.3	3.0	5.2	20.6		20.5		20.9		14.1		25.0	
Oct-Dec 2019	3.7	3.7	3.9	3.4	4.3	20.4		20.2		21.3		14.0		25.9	
Jan-Mar 2020	3.9	3.8	4.4	3.5	5.1	20.2		20.3		19.9		13.6		23.9	
Change on year	0.1 #	0.2 #	-0.2 #	0.1 #	-0.4 #	-0.7	#	-0.5	#	-1.9	#	-0.7	#	-2.4	
Nationality levels	MGTP	DSWE	DT39	DTG9	DTKC	LF9L	LF9W	DYTC	DYUQ	DYUS	DYVU	DYWA	DYWM	DYWS	DZGD
Jan-Mar 2018	1,415	1,231	183	89	95	8,739	2,452	7,695	2,057	1,035	395	410	167	625	228
Jan-Mar 2019	1,292	1,107	185	86	99	8,663	2,373	7,631	1,982	1,018	390	409	166	609	223
Apr-Jun 2019	1,296	1,110	186	71	114	8,659	2,350	7,621	1,981	1,023	366	399	162	624	204
Jul-Sep 2019	1,374	1,206	168	76	92	8,503	2,089	7,546	1,801	940	287	382	125	558	162
Oct-Dec 2019	1,268	1,102	165	87	79	8,450	2,223	7,456	1,900	976	323	398	143	578	180
Jan-Mar 2020	1,347	1,159	188	86	103	8,377	2,244	7,437	1,947	913	294	387	136	526	158
Change on year	55	52	3	0	4	-286	-129	-194	-35	-105	-96	-21	-30	-84	-65
Change %	4.3	4.7	1.8	-0.3	3.6	-3.3	-5.4	-2.5	-1.7	-10.3	-24.6	-5.2	-18.3	-13.7	-29.2
Nationality rates	MGUK	DT2Z	DT3D	DTKA	DTLH	CRZK		DYUO		DYUU		DYWE		DZ36	
Jan-Mar 2018	4.2	4.1	5.0	3.7	7.1	21.2		21.1		22.0		14.8		32.3	
Jan-Mar 2019	3.8	3.7	4.8	3.5	7.0	21.0		20.9		21.0		14.4		30.3	
Apr-Jun 2019	3.8	3.7	4.8	2.9	8.1	21.0		20.9		21.2		14.2		31.0	
Jul-Sep 2019	4.0	4.0	4.5	3.3	6.4	20.6		20.6		20.2		14.4		28.1	
Oct-Dec 2019	3.7	3.6	4.3	3.6	5.5	20.4		20.4		20.6		14.4		29.1	
Jan-Mar 2020	3.9	3.8	4.8	3.5	7.0	20.2		20.3		19.3		14.0		26.7	
Change on year	0.1 #	0.1 #	0.1 #	0.0 #	0.0 #	-0.7	#	-0.6	#	-1.7	#	-0.4	#	-3.6	

Source: Labour Force Survey

Labour market statistics enquiries: labour.market@ons.gov.uk

1. The total series includes people who do not state their country of birth or nationality. The total levels series therefore do not equal the sum of the "UK" and "Non-UK" series.

2. This series consists of all 27 EU member states excluding the UK.

3. This series consists of those people whose main reason for being economically inactive was because they were students. It does not include all students as some students will be included in the employment and unemployment estimates.

UNEMPLOYMENT

9(1) Unemployment by age and duration

United Kingdom (thousands) seasonally adjusted

All aged 16 & over								All aged 16 - 64							
	All	Rate(%) ¹	Up to 6 months	Over 6 and up to 12 months	All over 12 months	% over 12 months	All over 24 months	All	Rate (%) ¹	Up to 6 months	Over 6 and up to 12 months	All over 12 months	% over 12 months	All over 24 months	
	1	2	3	4	5	6	7		8	9	10	11	12	13	14
People	MGSC	MG SX	YBWF	YBWG	YBWH	YBWI	YBWL	LF2I	LF2Q	LF2Y	LF32	LF34	LF36	LF38	
Feb-Apr 2018	1,416	4.2	834	213	370	26.1	202	1,394	4.3	823	209	363	26.0	200	
Feb-Apr 2019	1,304	3.8	779	178	347	26.6	168	1,287	3.9	773	177	337	26.2	163	
May-Jul 2019	1,294	3.8	786	180	327	25.3	171	1,280	3.9	782	179	320	25.0	167	
Aug-Oct 2019	1,281	3.8	782	191	308	24.0	158	1,256	3.8	771	187	299	23.8	151	
Nov-Jan 2020	1,343	3.9	825	212	306	22.8	165	1,311	4.0	810	201	300	22.9	156	
Feb-Apr 2020	1,336	3.9	860	206	270	20.2	138	1,314	4.0	853	202	259	19.7	132	
Change on quarter	-8	0.0	35	-6	-37	-2.6	-27	3	0.0	43	1	-41	-3.1	-24	
Change %	-0.6		4.2	-2.9	-11.9		-16.3	0.2		5.2	0.4	-13.6		-15.7	
Change on year	31	0.1	82	27	-77	-6.4	-30	27	0.1	80	25	-78	-6.4	-31	
Change %	2.4		10.5	15.2	-22.3		-17.8	2.1		10.3	14.1	-23.1		-19.1	
Men	MGSD	MG SY	MGYK	MGYM	MGYO	YBWJ	YBWM	YBSI	YBTJ	YBWP	YBWS	YBWV	YBWY	YBXB	
Feb-Apr 2018	767	4.3	429	120	218	28.4	120	753	4.4	421	118	214	28.4	120	
Feb-Apr 2019	719	4.0	401	103	214	29.8	107	709	4.1	399	102	208	29.3	106	
May-Jul 2019	710	4.0	402	106	202	28.5	110	701	4.1	399	105	197	28.1	107	
Aug-Oct 2019	715	4.0	413	108	193	27.0	102	699	4.1	407	104	188	26.9	98	
Nov-Jan 2020	748	4.1	445	123	180	24.1	96	725	4.2	435	112	178	24.5	92	
Feb-Apr 2020	738	4.1	461	121	156	21.2	81	724	4.2	456	119	149	20.6	77	
Change on quarter	-10	0.0	16	-2	-24	-2.9	-15	-1	0.0	21	7	-29	-4.0	-15	
Change %	-1.3		3.6	-1.5	-13.4		-15.3	-0.1		4.8	6.2	-16.3		-15.9	
Change on year	19	0.1	60	17	-58	-8.6	-26	15	0.1	57	17	-59	-8.7	-29	
Change %	2.7		14.9	16.8	-27.0		-24.4	2.1		14.2	16.8	-28.3		-27.2	
Women	MGSE	MG SZ	MGYL	MGYN	MGYP	YBWK	YBWN	LF2J	LF2R	LF2Z	LF33	LF35	LF37	LF39	
Feb-Apr 2018	649	4.1	404	93	152	23.4	82	641	4.2	402	90	149	23.2	80	
Feb-Apr 2019	586	3.7	377	75	133	22.7	61	578	3.7	374	75	129	22.3	57	
May-Jul 2019	583	3.6	385	74	125	21.4	61	579	3.7	382	74	123	21.3	60	
Aug-Oct 2019	566	3.5	368	83	115	20.3	56	557	3.6	364	83	111	19.9	53	
Nov-Jan 2020	595	3.7	380	89	126	21.2	69	586	3.7	376	89	122	20.8	65	
Feb-Apr 2020	597	3.7	399	85	114	19.0	57	590	3.8	397	83	110	18.7	55	
Change on quarter	2	0.0	19	-4	-12	-2.2	-12	4	0.0	22	-6	-12	-2.1	-10	
Change %	0.4		4.9	-4.7	-9.9		-17.6	0.6		5.8	-7.0	-9.7		-15.4	
Change on year	12	0.0	22	10	-20	-3.7	-4	12	0.0	23	8	-19	-3.6	-2	
Change %	2.0		5.8	13.0	-14.8		-6.0	2.1		6.1	10.5	-14.6		-4.0	
16-17								18-24							
	All	Rate (%) ¹	Up to 6 months	Over 6 and up to 12 months	All over 12 months	% over 12 months	All over 24 months	All	Rate (%) ¹	Up to 6 months	Over 6 and up to 12 months	All over 12 months	% over 12 months	All over 24 months	
	15	16	17	18	19	20	21		22	23	24	25	26	27	28
People	YBVH	YBVK	YBXD	YBXG	YBXJ	YBXM	YBXP	YBVN	YBVO	YBQS	YBXV	YBXY	YBYB	YBYE	
Feb-Apr 2018	114	24.7	95	14	5	4.7	*	401	10.3	267	60	74	18.5	29	
Feb-Apr 2019	86	20.3	68	10	8	9.5	*	394	10.2	269	60	65	16.5	14	
May-Jul 2019	84	19.3	63	16	5	5.8	*	404	10.5	275	56	72	17.8	21	
Aug-Oct 2019	87	20.0	70	13	4	4.5	*	386	10.2	266	58	61	15.9	16	
Nov-Jan 2020	96	22.1	77	14	5	5.5	*	410	10.5	278	67	66	16.0	22	
Feb-Apr 2020	112	25.8	83	21	8	7.0	*	416	10.7	293	64	60	14.3	15	
Change on quarter	16	3.7	5	8	3	1.6	*	6	0.2	15	-3	-6	-1.7	-7	
Change %	16.1		6.6	57.2	49.5		*	1.4		5.4	-4.5	-9.2		-33.3	
Change on year	25	5.5	14	12	0	-2.4	*	22	0.5	24	4	-6	-2.2	0	
Change %	29.4		20.5	120.1	-3.8		*	5.6		8.9	6.0	-8.5		3.3	
Men	YBVI	YBVL	YBXE	YBXH	YBXK	YBXN	YBXQ	YBVO	YBVR	YBXT	YBXW	YBXZ	YBYC	YBYF	
Feb-Apr 2018	59	25.6	46	9	3	5.6	*	233	11.4	148	38	48	20.4	18	
Feb-Apr 2019	45	22.1	36	4	5	10.8	*	248	12.3	163	41	44	17.7	11	
May-Jul 2019	46	22.0	34	8	4	8.9	*	246	12.3	155	41	50	20.4	15	
Aug-Oct 2019	52	25.1	43	7	3	4.9	*	225	11.3	144	37	44	19.6	11	
Nov-Jan 2020	56	27.5	45	7	4	7.1	*	242	11.9	158	42	42	17.2	13	
Feb-Apr 2020	65	30.8	50	11	3	5.1	*	229	11.3	152	41	35	15.5	6	
Change on quarter	9	3.4	5	4	-1	-1.9	*	-14	-0.5	-6	-2	-6	-1.7	-7	
Change %	15.7		11.4	61.5	-16.0		*	-5.6		-3.6	-4.1	-14.7		-55.0	
Change on year	19	8.7	14	7	-2	-5.7	*	-20	-1.0	-10	-1	-9	-2.2	-5	
Change %	42.8		39.5	151.9	-32.3		*	-7.9		-6.4	-1.7	-19.4		-44.6	
Women	YBVJ	YBVM	YBXF	YBXI	YBXL	YBXO	YBXR	YBVP	YBVS	YBXU	YBXX	YBYA	YBYD	YBYG	
Feb-Apr 2018	56	23.8	49	4	*	*	*	168	9.0	120	22	27	15.8	11	
Feb-Apr 2019	41	18.6	32	5	3	8.0	*	146	7.9	106	19	21	14.5	4	
May-Jul 2019	37	16.7	29	7	*	*	*	158	8.6	121	16	22	13.8	6	
Aug-Oct 2019	35	15.3	28	6	*	*	*	160	8.9	121	22	17	10.8	5	
Nov-Jan 2020	40	17.4	32	7	*	*	*	168	9.1	119	25	24	14.3	9	
Feb-Apr 2020	47	21.1	32	10	5	9.7	*	188	10.1	140	23	24	12.9	9	
Change on quarter	7	3.7	0	4	*	*	*	20	1.0	21	-1	0	-1.4	0	
Change %	16.8		0.0	52.8	*	*	*	11.6		17.4	-5.3	0.4		-1.9	
Change on year	6	2.5	0	5	1	1.7	*	42	2.2	34	4	3	-1.6	5	
Change %	14.6		-0.6	93.3	39.0		*	28.6		32.5	22.8	14.2		141.2	

Relationship between columns: 1=3+4+5; 8=10+11+12; 15=17+18+19; 22=24+25+26.

1 Denominator = economically active for that age group.

Source: Labour Force Survey
Labour market statistics enquiries: labour.market@ons.gov.uk

UNEMPLOYMENT

9(2) Unemployment by age and duration

United Kingdom (thousands) seasonally adjusted

	25-49							50 and over						
	All	Rate(%) ¹	Up to 6 months	Over 6 and up to 12 months	All over 12 months	% over 12 months	All over 24 months	All	Rate(%) ¹	Up to 6 months	Over 6 and up to 12 months	All over 12 months	% over 12 months	All over 24 months
	1	2	3	4	5	6	7	8	9	10	11	12	13	14
People	MGVI	MGXB	YBYH	YBYK	YBYN	YBYQ	YBYT	YBVT	YBVW	YBYW	YBYZ	YBZC	YBZF	YBZI
Feb-Apr 2018	592	3.1	326	94	172	29.1	99	309	2.9	146	45	118	38.2	74
Feb-Apr 2019	544	2.9	314	71	159	29.3	87	280	2.6	128	38	115	41.0	67
May-Jul 2019	534	2.8	313	69	152	28.5	86	272	2.5	135	40	98	36.0	62
Aug-Oct 2019	517	2.7	300	76	140	27.2	74	291	2.7	145	44	102	35.0	67
Nov-Jan 2020	534	2.8	320	81	133	25.0	75	302	2.8	150	50	102	33.7	69
Feb-Apr 2020	535	2.8	348	73	114	21.3	61	272	2.5	137	47	88	32.4	63
Change on quarter	1	0.0	28	-7	-19	-3.7	-13	-30	-0.3	-13	-3	-14	-1.3	-6
Change %	0.2		8.7	-9.1	-14.5		-17.7	-10.0		-8.6	-6.9	-13.4		-8.7
Change on year	-8	-0.1	34	3	-45	-8.0	-26	-8	-0.1	9	9	-27	-8.6	-5
Change %	-1.5		10.9	3.6	-28.3		-29.5	-2.9		7.3	24.6	-23.2		-6.9
Men	YBYF	MGXC	YBYI	YBYL	YBYO	YBYR	YBYU	YBYU	YBVX	YBYX	YBZA	YBZD	YBZG	YBZJ
Feb-Apr 2018	295	2.9	153	47	95	32.3	58	180	3.2	83	26	72	39.8	44
Feb-Apr 2019	268	2.7	142	36	91	33.8	56	157	2.7	61	22	74	47.4	40
May-Jul 2019	267	2.7	145	33	89	33.4	53	151	2.6	68	24	59	39.0	41
Aug-Oct 2019	262	2.6	144	36	82	31.3	47	175	3.0	83	28	64	36.7	44
Nov-Jan 2020	276	2.7	162	40	73	26.6	41	174	3.0	80	33	61	35.3	42
Feb-Apr 2020	279	2.8	178	45	56	20.0	33	166	2.9	81	24	62	37.1	43
Change on quarter	3	0.0	15	5	-18	-6.6	-8	-8	-0.1	1	-9	0	1.8	1
Change %	1.1		9.5	12.5	-23.9		-20.3	-4.6		1.6	-28.6	0.3		1.9
Change on year	10	0.1	36	10	-35	-13.8	-24	9	0.1	20	2	-13	-10.2	2
Change %	3.9		25.4	26.6	-38.6		-42.1	5.9		32.9	8.3	-17.0		5.6
Women	YBYG	MGXD	YBYJ	YBYM	YBYP	YBYS	YBYV	YBYV	YBVY	YBYX	YBZB	YBZE	YBZH	YBZK
Feb-Apr 2018	297	3.3	173	47	77	25.9	41	129	2.6	63	20	46	36.0	30
Feb-Apr 2019	275	3.1	172	35	68	24.8	31	124	2.4	67	16	41	32.9	27
May-Jul 2019	267	3.0	168	35	63	23.6	33	121	2.4	66	16	39	32.4	21
Aug-Oct 2019	255	2.9	157	40	58	22.9	27	116	2.3	62	16	38	32.5	23
Nov-Jan 2020	259	2.9	158	40	60	23.3	34	128	2.5	71	17	40	31.5	27
Feb-Apr 2020	257	2.8	170	28	58	22.7	29	106	2.0	56	23	27	25.0	20
Change on quarter	-2	0.0	12	-12	-2	-0.5	-5	-22	-0.4	-14	6	-14	-6.5	-7
Change %	-0.8		7.8	-30.7	-3.1		-14.6	-17.2		-20.2	34.1	-34.3		-25.3
Change on year	-19	-0.2	-2	-7	-10	-2.1	-2	-17	-0.4	-11	7	-14	-7.9	-7
Change %	-6.8		-1.0	-20.0	-14.5		-6.1	-14.0		-15.9	46.8	-34.5		-25.6

Relationship between columns: 1=3+4+5; 8=10+11+12.

1 Denominator = economically active for that age group.

Source: Labour Force Survey
Labour market statistics enquiries: labour.market@ons.gov.uk

ECONOMIC ACTIVITY AND INACTIVITY

10 Economic activity by age

United Kingdom (thousands) seasonally adjusted

	All aged & over	16 - 64	16 - 17	18 - 24	25 - 34	35 - 49	50 - 64	65+
Economically active	1	2	3	4	5	6	7	8
People	MGSF	LF2K	YBZL	YBZO	YBZR	YBZU	LF3A	LFK8
Feb-Apr 2018	33,805	32,560	462	3,905	7,731	11,202	9,260	1,245
Feb-Apr 2019	34,050	32,730	425	3,864	7,815	11,165	9,461	1,321
May-Jul 2019	34,071	32,743	435	3,834	7,822	11,137	9,517	1,327
Aug-Oct 2019	34,082	32,749	435	3,796	7,848	11,152	9,517	1,333
Nov-Jan 2020	34,328	32,949	435	3,892	7,873	11,172	9,577	1,380
Feb-Apr 2020	34,327	32,934	433	3,879	7,876	11,165	9,581	1,393
Change on quarter	-2	-15	-2	-13	3	-7	4	13
Change %	0.0	0.0	-0.5	-0.3	0.0	-0.1	0.0	1.0
Change on year	276	204	8	15	62	0	120	72
Change %	0.8	0.6	1.8	0.4	0.8	0.0	1.3	5.5
Men	MGSG	YBSL	YBZM	YBZP	YBZS	YBZV	YBZY	YCAE
Feb-Apr 2018	17,895	17,143	228	2,046	4,155	5,874	4,840	752
Feb-Apr 2019	18,009	17,209	205	2,012	4,196	5,872	4,924	800
May-Jul 2019	17,971	17,198	210	1,991	4,191	5,866	4,940	773
Aug-Oct 2019	18,029	17,236	209	1,993	4,197	5,878	4,959	793
Nov-Jan 2020	18,075	17,290	204	2,040	4,206	5,859	4,981	784
Feb-Apr 2020	17,985	17,219	210	2,015	4,168	5,844	4,982	766
Change on quarter	-90	-71	6	-26	-38	-14	1	-19
Change %	-0.5	-0.4	3.0	-1.3	-0.9	-0.2	0.0	-2.4
Change on year	-24	10	5	3	-28	-28	58	-34
Change %	-0.1	0.1	2.4	0.1	-0.7	-0.5	1.2	-4.2
Women	MGSH	LF2L	YBZN	YBZQ	YBZT	YBZW	LF3B	LFK9
Feb-Apr 2018	15,910	15,417	234	1,860	3,576	5,328	4,420	493
Feb-Apr 2019	16,042	15,521	220	1,853	3,619	5,292	4,537	521
May-Jul 2019	16,100	15,545	224	1,843	3,630	5,271	4,576	555
Aug-Oct 2019	16,053	15,513	226	1,803	3,651	5,274	4,558	540
Nov-Jan 2020	16,254	15,658	231	1,852	3,667	5,313	4,596	595
Feb-Apr 2020	16,342	15,715	223	1,865	3,708	5,320	4,599	627
Change on quarter	88	56	-8	13	41	7	3	32
Change %	0.5	0.4	-3.5	0.7	1.1	0.1	0.1	5.4
Change on year	300	194	3	12	89	28	62	106
Change %	1.9	1.3	1.2	0.6	2.5	0.5	1.4	20.3

Economic activity rates (%)¹

People	MGWG	LF22	YCAC	YCAJ	YCAM	YCAP	LF2C	LFL2
Feb-Apr 2018	63.8	79.0	32.9	69.6	86.7	87.6	74.0	10.6
Feb-Apr 2019	64.0	79.2	30.5	69.8	87.3	87.6	74.6	11.1
May-Jul 2019	63.9	79.2	31.2	69.5	87.3	87.5	74.7	11.1
Aug-Oct 2019	63.9	79.2	31.1	69.1	87.6	87.6	74.5	11.1
Nov-Jan 2020	64.2	79.6	30.8	71.1	87.9	87.8	74.7	11.4
Feb-Apr 2020	64.2	79.5	30.5	71.1	88.0	87.8	74.5	11.5
Change on quarter	-0.1	-0.1	-0.3	0.0	0.1	0.0	-0.2	0.1
Change on year	0.2	0.3	0.0	1.3	0.7	0.1	0.0	0.4
Men	MGWH	MGSP	YCAH	YCAK	YCAN	YCAQ	MGWQ	MGWT
Feb-Apr 2018	69.1	83.6	31.8	71.4	93.1	93.1	78.8	13.9
Feb-Apr 2019	69.1	83.7	28.8	71.1	93.3	93.4	79.1	14.5
May-Jul 2019	68.9	83.6	29.5	70.7	93.1	93.3	79.1	14.0
Aug-Oct 2019	69.0	83.8	29.2	71.0	93.2	93.5	79.2	14.3
Nov-Jan 2020	69.1	84.0	28.3	73.0	93.4	93.2	79.3	14.1
Feb-Apr 2020	68.6	83.6	28.9	72.3	92.5	93.0	79.0	13.7
Change on quarter	-0.4	-0.4	0.7	-0.7	-0.9	-0.2	-0.2	-0.4
Change on year	-0.5	-0.2	0.1	1.2	-0.8	-0.4	-0.1	-0.9
Women	MGWI	LF23	YCAI	YCAL	YCAO	YCAR	LF2D	LFL3
Feb-Apr 2018	58.8	74.4	34.1	67.7	80.3	82.3	69.4	7.8
Feb-Apr 2019	59.0	74.8	32.4	68.4	81.2	82.1	70.2	8.1
May-Jul 2019	59.2	74.8	33.0	68.3	81.4	81.8	70.5	8.6
Aug-Oct 2019	58.9	74.7	33.1	67.1	81.9	81.9	70.0	8.4
Nov-Jan 2020	59.6	75.3	33.5	69.1	82.4	82.5	70.4	9.2
Feb-Apr 2020	59.9	75.6	32.1	69.8	83.4	82.7	70.2	9.6
Change on quarter	0.3	0.2	-1.4	0.7	1.0	0.1	-0.2	0.5
Change on year	0.8	0.8	-0.2	1.5	2.2	0.6	0.0	1.5

Relationship between columns: 1= 2+8; 2=3+4+5+6+7.

Data source: Labour Force Survey

¹Denominator = all persons in the relevant age group.

Labour market statistics enquiries: labour.market@ons.gov.uk

ECONOMIC ACTIVITY AND INACTIVITY

11 Economic inactivity: reasons

United Kingdom (thousands) seasonally adjusted

	Economic inactivity by reason (aged 16 to 64)									
	Total aged 16-64					Wanting/not wanting a job (aged 16 to 64)				
			Looking after family / home			Discouraged workers		Does not want job		Wants a job ¹
	Student	Temp sick	Long-term sick	Retired	Other	Does not want job	Wants a job ¹			
	1	2	3	4	5	6	7	8	9	10
People	LF2M	LF63	LF65	LF67	LF69	LFL8	LF6B	LF6D	LFL9	LFM2
Feb-Apr 2018	8,668	2,323	2,027	180	1,986	31	1,133	990	6,694	1,974
Feb-Apr 2019	8,581	2,260	2,047	175	1,971	32	1,112	985	6,757	1,823
May-Jul 2019	8,587	2,241	1,999	164	2,048	40	1,101	995	6,712	1,875
Aug-Oct 2019	8,606	2,280	1,966	174	2,072	32	1,117	965	6,767	1,839
Nov-Jan 2020	8,431	2,186	1,868	178	2,120	31	1,111	937	6,560	1,871
Feb-Apr 2020	8,470	2,128	1,784	171	2,087	38	1,158	1,105	6,461	2,009
Change on quarter	39	-58	-84	-7	-33	6	47	168	-99	139
Change %	0.5	-2.6	-4.5	-3.9	-1.5	19.4	4.2	17.9	-1.5	7.4
Change on year	-111	-132	-263	-4	116	6	45	121	-297	186
Change %	-1.3	-5.8	-12.9	-2.1	5.9	18.2	4.1	12.2	-4.4	10.2
Men	YBSO	BEEEX	BEAQ	BEDI	BEDL	YCFP	BEDR	BEDU	YBWA	YBWD
Feb-Apr 2018	3,354	1,165	233	85	960	16	465	429	2,520	834
Feb-Apr 2019	3,341	1,156	234	93	930	23	497	409	2,607	734
May-Jul 2019	3,364	1,135	226	72	964	24	506	437	2,591	772
Aug-Oct 2019	3,340	1,142	235	75	961	18	506	403	2,590	750
Nov-Jan 2020	3,300	1,103	225	78	981	20	501	394	2,520	780
Feb-Apr 2020	3,386	1,068	229	79	954	24	521	512	2,517	869
Change on quarter	86	-35	4	1	-26	4	20	118	-4	89
Change %	2.6	-3.2	1.7	1.1	-2.7	19.5	4.0	30.1	-0.1	11.4
Change on year	45	-88	-5	-14	24	1	24	103	-90	135
Change %	1.4	-7.6	-2.1	-15.3	2.6	5.8	4.8	25.3	-3.5	18.4
Women	LF2N	LF64	LF66	LF68	LF6A	LFM3	LF6C	LF6E	LFM4	LFM5
Feb-Apr 2018	5,313	1,157	1,793	94	1,025	15	668	561	4,174	1,140
Feb-Apr 2019	5,240	1,104	1,813	82	1,040	9	615	576	4,151	1,089
May-Jul 2019	5,223	1,106	1,773	91	1,084	16	595	558	4,120	1,103
Aug-Oct 2019	5,266	1,139	1,731	100	1,111	14	611	561	4,177	1,089
Nov-Jan 2020	5,130	1,083	1,643	100	1,139	12	610	544	4,040	1,091
Feb-Apr 2020	5,084	1,060	1,555	92	1,133	14	637	593	3,944	1,140
Change on quarter	-46	-22	-88	-8	-6	2	27	49	-96	49
Change %	-0.9	-2.1	-5.4	-7.7	-0.6	19.3	4.4	9.1	-2.4	4.5
Change on year	-156	-44	-258	11	92	4	22	17	-207	51
Change %	-3.0	-4.0	-14.2	12.9	8.9	48.4	3.5	3.0	-5.0	4.7
Percentage of economically inactive aged from 16 to 64 (%)										
People	LF6V	LF6X	LF6Z	LF73	LF75	LF77	LF79	LF7B	LF7D	LF7F
Feb-Apr 2018	100.0	26.8	23.4	2.1	22.9	0.4	13.1	11.4	77.2	22.8
Feb-Apr 2019	100.0	26.3	23.9	2.0	23.0	0.4	13.0	11.5	78.8	21.2
May-Jul 2019	100.0	26.1	23.3	1.9	23.8	0.5	12.8	11.6	78.2	21.8
Aug-Oct 2019	100.0	26.5	22.8	2.0	24.1	0.4	13.0	11.2	78.6	21.4
Nov-Jan 2020	100.0	25.9	22.2	2.1	25.1	0.4	13.2	11.1	77.8	22.2
Feb-Apr 2020	100.0	25.1	21.1	2.0	24.6	0.4	13.7	13.0	76.3	23.7
Men	BEBP	BEEH	BEEK	BEEN	BEEQ	BEET	BEEW	BEEZ	BEAS	BEGT
Feb-Apr 2018	100.0	34.7	7.0	2.5	28.6	0.5	13.9	12.8	75.1	24.9
Feb-Apr 2019	100.0	34.6	7.0	2.8	27.9	0.7	14.9	12.2	78.0	22.0
May-Jul 2019	100.0	33.7	6.7	2.1	28.7	0.7	15.0	13.0	77.0	23.0
Aug-Oct 2019	100.0	34.2	7.0	2.2	28.8	0.5	15.1	12.1	77.5	22.5
Nov-Jan 2020	100.0	33.4	6.8	2.4	29.7	0.6	15.2	11.9	76.4	23.6
Feb-Apr 2020	100.0	31.5	6.8	2.3	28.2	0.7	15.4	15.1	74.3	25.7
Women	LF6W	LF6Y	LF72	LF74	LF76	LF78	LF7A	LF7C	LF7E	LF7G
Feb-Apr 2018	100.0	21.8	33.8	1.8	19.3	0.3	12.6	10.6	78.6	21.4
Feb-Apr 2019	100.0	21.1	34.6	1.6	19.9	0.2	11.7	11.0	79.2	20.8
May-Jul 2019	100.0	21.2	33.9	1.7	20.7	0.3	11.4	10.7	78.9	21.1
Aug-Oct 2019	100.0	21.6	32.9	1.9	21.1	0.3	11.6	10.7	79.3	20.7
Nov-Jan 2020	100.0	21.1	32.0	2.0	22.2	0.2	11.9	10.6	78.7	21.3
Feb-Apr 2020	100.0	20.9	30.6	1.8	22.3	0.3	12.5	11.7	77.6	22.4

Relationship between columns : 1=2+3+4+5+6+7+8; 1=9+10.

Data Source: Labour Force Survey.

Labour market statistics enquiries: labour.market@ons.gov.uk

1. This series comprises those who say they would like a regular paid job, but who do not meet the internationally agreed definition of unemployment because they have not been looking for work in the last four weeks and/or they were unable to start working within two weeks.

ECONOMIC ACTIVITY AND INACTIVITY

12 Educational status, economic activity and inactivity of people aged from 16 to 24

United Kingdom (thousands) seasonally adjusted

		All aged 16 to 24				In full-time education (FTE)				Not in full-time education (FTE) ¹			
		Total	Employed	Unemployed	Economically inactive	Total	Employed ²	Unemployed ²	Economically inactive	Total	Employed	Unemployed	Economically inactive
		1	2	3	4	5	6	7	8	9	10	11	12
Levels													
People													
	16-17	1,419	321	112	987	1,201	244	76	880	219	77	35	106
	18-24	5,455	3,463	416	1,576	1,761	653	101	1,007	3,694	2,810	315	569
	16-24	6,875	3,784	528	2,562	2,962	897	177	1,887	3,913	2,887	351	676
Men													
	16-17	727	145	65	517	605	101	40	464	122	44	24	53
	18-24	2,786	1,786	229	771	819	263	38	518	1,966	1,523	191	253
	16-24	3,513	1,932	293	1,288	1,425	365	78	982	2,088	1,567	215	306
Women													
	16-17	692	176	47	470	595	143	36	417	97	33	11	53
	18-24	2,670	1,677	188	805	942	390	63	489	1,728	1,287	125	316
	16-24	3,362	1,853	235	1,275	1,537	533	99	905	1,825	1,320	136	370
Changes on quarter													
People													
	16-17	9	-17	16	11	-20	-19	16	-17	29	1	-1	29
	18-24	-20	-19	6	-7	9	32	15	-38	-29	-51	-9	31
	16-24	-11	-36	21	4	-11	14	31	-56	1	-50	-9	60
Men													
	16-17	5	-3	9	-1	-6	-3	8	-11	11	0	1	10
	18-24	-10	-12	-14	15	-10	-6	-4	0	-1	-6	-10	15
	16-24	-6	-15	-5	14	-16	-9	4	-11	10	-6	-9	25
Women													
	16-17	5	-15	7	13	-14	-16	8	-6	19	1	-1	19
	18-24	-10	-6	20	-23	18	38	19	-39	-28	-45	1	16
	16-24	-5	-21	26	-10	4	22	27	-45	-9	-43	0	35
Rates(%)³													
People													
	16-17		22.6	25.8	69.5		20.3	23.8	73.3		35.1	31.6	48.6
	18-24		63.5	10.7	28.9		37.1	13.4	57.2		76.1	10.1	15.4
	16-24		55.0	12.2	37.3		30.3	16.5	63.7		73.8	10.8	17.3
Men													
	16-17		20.0	30.8	71.1		16.7	28.5	76.6		36.3	35.6	43.6
	18-24		64.1	11.3	27.7		32.1	12.6	63.2		77.4	11.1	12.9
	16-24		55.0	13.2	36.7		25.6	17.7	68.9		75.1	12.1	14.7
Women													
	16-17		25.4	21.1	67.9		24.0	20.1	70.0		33.7	25.3	54.9
	18-24		62.8	10.1	30.2		41.4	13.9	51.9		74.5	8.8	18.3
	16-24		55.1	11.2	37.9		34.7	15.6	58.9		72.3	9.3	20.2
Changes on quarter													
People													
	16-17		-1.4	3.7	0.3		-1.2	5.2	-0.2		-4.7	-0.8	7.6
	18-24		-0.1	0.2	0.0		1.7	1.2	-2.5		-0.8	-0.1	1.0
	16-24		-0.4	0.5	0.1		0.6	2.3	-1.6		-1.3	-0.1	1.5
Men													
	16-17		-0.5	3.4	-0.7		-0.3	4.9	-1.1		-3.5	0.5	4.9
	18-24		-0.2	-0.5	0.7		-0.3	-0.9	0.8		-0.3	-0.5	0.8
	16-24		-0.3	-0.1	0.5		-0.3	1.1	0.0		-0.7	-0.4	1.1
Women													
	16-17		-2.3	3.7	1.4		-2.1	5.2	0.6		-6.3	-2.9	10.7
	18-24		0.0	1.0	-0.7		3.3	2.7	-5.2		-1.4	0.3	1.2
	16-24		-0.5	1.2	-0.2		1.4	3.3	-3.1		-2.0	0.2	2.0

Relationship between columns: 1=5+9; 2=6+10; 3=7+11.

Source: Labour Force Survey
Labour market statistics enquiries: labour.market@ons.gov.uk

1. Not in full-time education includes people in part-time education and/or some form of training. Estimates of the number of young people who were not in employment, education or training ("NEET") cannot therefore be derived from this table. Estimates of young people who were NEET are published separately at:
<https://www.ons.gov.uk/employmentandlabourmarket/peopleinwork/unemployment/bulletins/youngpeoplenotinfulltimeeducationemploymentortrainingneet/latest>

2. People in full-time education are employed if they have a part-time job or unemployed if they are looking for part-time employment.

3. Denominator = all persons in the relevant age group for economically active, total in employment and economically inactive; economically active for unemployment.

EARNINGS

13 Average Weekly Earnings (nominal) - total pay¹

Standard Industrial Classification (2007)

Great Britain, seasonally adjusted

		Whole Economy (100%) ²			Private sector (82%) ²			Public sector (18%) ²		
		Weekly Earnings (£)	% changes year on year Single month	3 month average ³	Weekly Earnings (£)	% changes year on year Single month	3 month average ³	Weekly Earnings (£)	% changes year on year Single month	3 month average ³
		KAB9	KAC2	KAC3	KAC4	KAC5	KAC6	KAC7	KAC8	KAC9
Apr 18	(r)	513	2.2	2.7	513	2.3	2.8	521	2.4	2.4
Feb 19	(r)	531	3.5	3.6	531	3.8	3.8	532	2.3	2.6
Mar 19	(r)	531	2.4	3.3	529	2.3	3.4	534	2.6	2.5
Apr 19	(r)	534	4.1	3.3	533	4.0	3.4	544	4.5	3.1
May 19	(r)	536	4.0	3.5	535	4.0	3.5	543	3.9	3.6
Jun 19	(r)	538	3.8	4.0	537	3.8	4.0	544	3.8	4.0
Jul 19	(r)	539	3.9	3.9	539	3.9	3.9	546	3.7	3.8
Aug 19	(r)	540	3.3	3.7	539	3.4	3.7	544	2.8	3.4
Sep 19	(r)	542	3.8	3.6	541	3.8	3.7	547	3.5	3.3
Oct 19	(r)	542	2.4	3.2	541	2.2	3.2	547	3.2	3.1
Nov 19	(r)	544	3.4	3.2	543	3.4	3.1	549	3.3	3.3
Dec 19	(r)	544	2.8	2.9	542	2.7	2.7	549	3.3	3.3
Jan 20	(r)	546	3.1	3.1	545	3.2	3.1	549	3.0	3.2
Feb 20	(r)	545	2.7	2.9	543	2.4	2.8	551	3.5	3.3
Mar 20	(r)	538	1.2	2.3	533	0.8	2.1	552	3.3	3.3
Apr 20	(p)	529	-0.9	1.0	524	-1.7	0.5	559	2.8	3.2
		Services, SIC 2007 sections G-S (85%) ²			Finance and business services, SIC 2007 sections K-N (21%) ²			Public sector excluding financial services (18%) ²		
		Weekly Earnings (£)	% changes year on year Single month	3 month average ³	Weekly Earnings (£)	% changes year on year Single month	3 month average ³	Weekly Earnings (£)	% changes year on year Single month	3 month average ³
		K5BZ	K5C2	K5C3	K5C4	K5C5	K5C6	KAD8	KAD9	KAE2
Apr 18	(r)	498	2.2	2.7	654	1.7	2.5	517	2.6	2.5
Feb 19	(r)	515	3.5	3.6	677	3.5	3.8	528	2.2	2.6
Mar 19	(r)	516	2.6	3.4	681	2.4	3.5	529	2.4	2.5
Apr 19	(r)	519	4.1	3.4	688	5.2	3.7	540	4.4	3.0
May 19	(r)	521	4.1	3.6	689	5.4	4.3	539	3.9	3.6
Jun 19	(r)	522	3.9	4.0	691	5.0	5.2	537	3.5	3.9
Jul 19	(r)	524	3.9	4.0	692	4.0	4.8	543	3.8	3.7
Aug 19	(r)	524	3.3	3.7	694	4.4	4.4	539	2.7	3.3
Sep 19	(r)	526	3.8	3.6	698	5.0	4.5	542	3.5	3.4
Oct 19	(r)	527	2.2	3.1	697	3.4	4.2	543	3.2	3.2
Nov 19	(r)	528	3.4	3.1	699	3.9	4.1	545	3.4	3.4
Dec 19	(r)	528	2.9	2.9	697	3.5	3.6	545	3.4	3.3
Jan 20	(r)	530	3.3	3.2	699	3.2	3.5	545	3.1	3.3
Feb 20	(r)	528	2.7	3.0	694	2.5	3.1	547	3.6	3.4
Mar 20	(r)	523	1.3	2.4	679	-0.2	1.8	548	3.5	3.4
Apr 20	(p)	519	0.2	1.4	690	0.4	0.9	555	2.9	3.3
		Manufacturing, SIC 2007 section C (8%) ²			Construction, SIC 2007 section F (5%) ²			Wholesaling, retailing, hotels & restaurants, SIC 2007 sections G & I (23%) ²		
		Weekly Earnings (£)	% changes year on year Single month	3 month average ³	Weekly Earnings (£)	% changes year on year Single month	3 month average ³	Weekly Earnings (£)	% changes year on year Single month	3 month average ³
		K5CA	K5CB	K5CC	K5CD	K5CE	K5CF	K5CG	K5CH	K5CI
Apr 18	(r)	600	3.0	2.8	612	5.4	4.9	351	2.4	2.5
Feb 19	(r)	608	1.9	2.0	637	5.3	4.9	358	2.5	2.6
Mar 19	(r)	605	0.9	1.7	632	3.0	4.0	351	-0.2	1.7
Apr 19	(r)	615	2.4	1.8	653	6.8	5.0	356	1.5	1.2
May 19	(r)	613	2.5	1.9	648	6.2	5.3	363	1.5	0.9
Jun 19	(r)	615	2.8	2.6	648	5.4	6.1	363	3.9	2.3
Jul 19	(r)	615	2.2	2.5	652	7.2	6.3	363	2.9	2.7
Aug 19	(r)	619	3.2	2.8	649	4.7	5.8	365	2.6	3.1
Sep 19	(r)	617	2.4	2.6	657	6.1	6.0	366	3.6	3.0
Oct 19	(r)	620	2.7	2.8	650	4.1	5.0	362	0.5	2.2
Nov 19	(r)	622	3.0	2.7	649	3.4	4.5	362	1.6	1.9
Dec 19	(r)	620	2.3	2.7	649	1.9	3.1	362	1.2	1.1
Jan 20	(r)	620	1.5	2.3	655	3.8	3.0	370	3.7	2.2
Feb 20	(r)	621	2.2	2.0	653	2.6	2.7	363	1.4	2.1
Mar 20	(r)	615	1.6	1.8	633	0.2	2.2	354	1.0	2.0
Apr 20	(p)	596	-3.1	0.3	582	-11.0	-2.8	340	-4.7	-0.8

Source: Monthly Wages & Salaries Survey

Earnings enquiries: 01633 456120

1. Estimates of total pay include bonuses but exclude arrears of pay.

2. The figure in brackets is the percentage of whole economy employment in that sector or industry for the latest time period. Email: earnings@ons.gov.uk

3. The three month average figures are the changes in the average seasonally adjusted values for the three months ending with the relevant month compared with the same period a year earlier.

EARNINGS

14 Average Weekly Earnings (nominal) - bonus pay

Standard Industrial Classification (2007)

Great Britain, seasonally adjusted

		Whole Economy (100%) ¹			Private sector (82%) ²			Public sector (18%) ²		
		Weekly Earnings (£)	% changes year on year		Weekly Earnings (£)	% changes year on year		Weekly Earnings (£)	% changes year on year	
			Single month	3 month average ²		Single month	3 month average ²		Single month	3 month average ²
		KAF4	KAF5	KAF6	KAF7	KAF8	KAF9	KAG2	KAG3	KAG4
Apr 18	(r)	31	1.7	1.1	37	-1.9	1.5	2	-4.9	-16.3
Feb 19	(r)	32	5.2	4.3	38	5.2	4.2	2	12.4	15.0
Mar 19	(r)	32	1.0	3.8	38	-2.9	2.3	3	118.9	66.9
Apr 19	(r)	32	1.2	2.4	38	4.3	2.1	2	9.5	36.4
May 19	(r)	33	7.8	3.3	40	7.4	2.8	2	21.4	39.9
Jun 19	(r)	32	1.7	3.5	39	-0.2	3.8	2	25.4	18.4
Jul 19	(r)	33	5.6	5.0	40	3.7	3.6	4	60.5	37.3
Aug 19	(r)	32	-2.3	1.6	39	-0.2	1.1	1	-58.4	-1.3
Sep 19	(r)	33	9.4	4.1	40	8.8	4.1	2	32.7	-2.3
Oct 19	(r)	32	-16.3	-4.1	39	-16.0	-3.4	2	-38.4	-35.1
Nov 19	(r)	33	6.7	-1.3	40	6.8	-1.3	2	0.8	-10.1
Dec 19	(r)	32	-3.1	-5.1	38	-3.5	-5.0	2	-2.9	-16.5
Jan 20	(r)	34	7.5	3.6	41	7.6	3.6	3	25.7	10.0
Feb 20	(r)	32	-1.3	0.9	38	-1.3	0.9	2	9.5	12.8
Mar 20	(r)	31	-4.3	0.6	37	-3.5	0.9	2	-28.6	1.4
Apr 20	(p)	27	-14.7	-6.8	33	-14.7	-6.5	2	-5.2	-9.6

		Services, SIC 2007 sections G-S (85%) ¹			Finance and business services, SIC 2007 sections K-N (21%) ²			Public sector excluding financial services (18%) ²		
		Weekly Earnings (£)	% changes year on year		Weekly Earnings (£)	% changes year on year		Weekly Earnings (£)	% changes year on year	
			Single month	3 month average ²		Single month	3 month average ²		Single month	3 month average ²
		K5CS	K5CT	K5CU	K5CV	K5CW	K5CX	KAH3	KAH4	KAH5
Apr 18	(r)	32	-2.4	1.0	78	8.2	3.8	1	-3.4	-11.6
Feb 19	(r)	33	5.0	4.1	78	2.8	1.7	2	36.9	26.2
Mar 19	(r)	33	-2.1	3.2	79	2.4	3.6	2	116.0	79.6
Apr 19	(r)	32	2.4	1.7	80	3.1	2.8	1	10.0	49.0
May 19	(r)	34	6.9	2.3	81	20.6	8.2	1	22.3	43.8
Jun 19	(r)	32	2.5	3.9	79	2.3	8.1	1	-16.9	4.9
Jul 19	(r)	34	3.6	4.3	80	-0.8	6.7	2	53.0	22.1
Aug 19	(r)	32	-2.4	1.2	79	0.7	0.7	1	-56.5	-9.8
Sep 19	(r)	35	9.2	3.4	85	11.1	3.6	1	26.2	-0.7
Oct 19	(r)	33	-18.7	-5.2	80	-12.9	-1.2	1	-37.7	-33.7
Nov 19	(r)	34	7.1	-2.3	83	1.6	-0.9	1	0.0	-11.0
Dec 19	(r)	32	-3.9	-6.2	78	0.1	-4.2	1	6.1	-13.8
Jan 20	(r)	36	8.7	3.9	83	6.4	2.7	2	10.4	5.7
Feb 20	(r)	32	-2.5	0.8	76	-1.5	1.7	2	14.0	10.5
Mar 20	(r)	31	-5.2	0.4	74	-6.0	-0.4	1	-34.6	-6.7
Apr 20	(p)	29	-11.5	-6.3	72	-10.3	-6.0	1	-4.5	-11.4

		Manufacturing, SIC 2007 section C (8%) ²			Construction, SIC 2007 section F (5%) ¹			Wholesaling, retailing, hotels & restaurants, SIC 2007 sections G & I (23%) ²		
		Weekly Earnings (£)	% changes year on year		Weekly Earnings (£)	% changes year on year		Weekly Earnings (£)	% changes year on year	
			Single month	3 month average ²		Single month	3 month average ²		Single month	3 month average ²
		K5D3	K5D4	K5D5	K5D6	K5D7	K5D8	K5D9	K5DA	K5DB
Apr 18	(r)	27	9.0	0.4	22	-8.4	-2.9	23	-1.5	3.4
Feb 19	(r)	23	-9.8	-1.2	28	19.9	18.0	23	0.8	-1.4
Mar 19	(r)	24	-7.1	-5.0	31	-1.5	5.0	19	-21.1	-7.7
Apr 19	(r)	28	3.8	-4.3	35	57.4	21.9	20	-11.5	-10.8
May 19	(r)	26	-3.8	-2.3	31	32.4	25.6	25	-13.5	-15.3
Jun 19	(r)	27	12.3	3.8	28	14.2	34.0	22	13.3	-5.4
Jul 19	(r)	25	-1.7	2.0	31	50.7	31.4	21	-4.4	-3.1
Aug 19	(r)	27	14.6	8.1	27	-21.6	8.0	22	2.1	3.4
Sep 19	(r)	24	-4.3	2.6	32	15.2	8.6	22	6.3	1.3
Oct 19	(r)	26	2.3	4.0	28	-12.0	-7.5	22	-13.3	-2.3
Nov 19	(r)	25	7.5	1.7	29	6.1	2.4	22	0.6	-2.8
Dec 19	(r)	25	-5.4	1.2	30	-0.9	-2.7	21	-2.4	-5.4
Jan 20	(r)	25	-4.0	-0.9	35	40.5	13.9	25	19.5	5.7
Feb 20	(r)	26	11.2	0.2	33	15.1	16.9	20	-11.4	1.4
Mar 20	(r)	26	7.8	4.7	29	-8.1	14.0	18	-4.5	1.0
Apr 20	(p)	24	-12.0	1.5	15	-57.4	-19.3	16	-19.5	-11.9

Source: Monthly Wages & Salaries Survey

Earnings enquiries: 01633 456120

1. The figure in brackets is the percentage of whole economy employment in that sector or industry for the latest time period. Email: earnings@ons.gov.uk

2. The three month average figures are the changes in the average seasonally adjusted values for the three months ending with the relevant month compared with the same period a year earlier.

EARNINGS

15 Average Weekly Earnings (nominal) - regular pay¹

Standard Industrial Classification (2007)

Great Britain, seasonally adjusted

		Whole Economy (100%) ²			Private sector (82%) ²			Public sector (18%) ²		
		Weekly Earnings (£)	% changes year on year		Weekly Earnings (£)	% changes year on year		Weekly Earnings (£)	% changes year on year	
			Single month	3 month average ³		Single month	3 month average ³		Single month	3 month average ³
		KAI7	KAI8	KAI9	KAJ2	KAJ3	KAJ4	KAJ5	KAJ6	KAJ7
Apr 18	(r)	484	2.6	2.9	476	2.7	3.0	519	2.3	2.5
Feb 19	(r)	497	3.2	3.4	491	3.5	3.6	531	2.2	2.6
Mar 19	(r)	498	3.1	3.3	492	3.3	3.6	531	2.3	2.4
Apr 19	(r)	503	4.0	3.4	494	3.9	3.6	542	4.4	3.0
May 19	(r)	504	3.8	3.6	496	3.8	3.7	540	3.8	3.5
Jun 19	(r)	506	4.0	3.9	498	4.1	4.0	540	3.5	3.9
Jul 19	(r)	507	3.8	3.9	500	3.9	4.0	541	3.1	3.5
Aug 19	(r)	508	3.6	3.8	501	3.6	3.9	542	3.2	3.3
Sep 19	(r)	509	3.6	3.6	501	3.6	3.7	544	3.4	3.2
Oct 19	(r)	510	3.2	3.5	502	3.2	3.5	546	3.3	3.3
Nov 19	(r)	510	3.2	3.3	503	3.2	3.3	547	3.4	3.4
Dec 19	(r)	511	3.2	3.2	504	3.2	3.2	548	3.3	3.3
Jan 20	(r)	512	2.8	3.1	504	2.7	3.0	548	3.0	3.2
Feb 20	(r)	512	2.8	2.9	504	2.7	2.8	549	3.3	3.2
Mar 20	(r)	510	2.4	2.7	502	2.1	2.5	550	3.5	3.3
Apr 20	(p)	503	0.0	1.7	491	-0.8	1.3	557	2.9	3.2
		Services, SIC 2007 sections G-S (85%) ²			Finance and business services, SIC 2007 sections K-N (21%) ²			Public sector excluding financial services (18%) ²		
		Weekly Earnings (£)	% changes year on year		Weekly Earnings (£)	% changes year on year		Weekly Earnings (£)	% changes year on year	
			Single month	3 month average ³		Single month	3 month average ³		Single month	3 month average ³
		K5DL	K5DM	K5DN	K5DO	K5DP	K5DQ	KAK6	KAK7	KAK8
Apr 18	(r)	467	2.5	2.8	579	2.2	2.8	516	2.5	2.5
Feb 19	(r)	480	3.2	3.5	599	3.3	3.9	527	2.2	2.6
Mar 19	(r)	482	3.2	3.4	604	4.1	4.0	528	2.4	2.5
Apr 19	(r)	486	4.1	3.5	606	4.5	4.0	538	4.2	3.0
May 19	(r)	487	3.9	3.7	607	4.3	4.3	536	3.9	3.5
Jun 19	(r)	489	4.2	4.1	613	5.2	4.7	537	3.6	3.9
Jul 19	(r)	491	3.8	4.0	611	4.2	4.6	538	3.2	3.6
Aug 19	(r)	491	3.5	3.8	613	4.6	4.7	539	3.2	3.3
Sep 19	(r)	492	3.6	3.7	616	4.6	4.5	541	3.4	3.3
Oct 19	(r)	493	3.2	3.5	618	4.5	4.6	542	3.4	3.4
Nov 19	(r)	494	3.3	3.4	617	4.0	4.4	544	3.5	3.4
Dec 19	(r)	495	3.4	3.3	619	3.9	4.1	544	3.4	3.4
Jan 20	(r)	495	3.0	3.2	617	2.5	3.5	544	3.1	3.3
Feb 20	(r)	495	3.0	3.1	619	3.2	3.2	546	3.4	3.3
Mar 20	(r)	495	2.6	2.9	617	2.3	2.7	547	3.5	3.3
Apr 20	(p)	490	0.8	2.2	616	1.8	2.4	554	3.0	3.3
		Manufacturing, SIC 2007 section C (8%) ²			Construction, SIC 2007 section F (5%) ²			Wholesaling, retailing, hotels & restaurants, SIC 2007 sections G & I (23%) ²		
		Weekly Earnings (£)	% changes year on year		Weekly Earnings (£)	% changes year on year		Weekly Earnings (£)	% changes year on year	
			Single month	3 month average ³		Single month	3 month average ³		Single month	3 month average ³
		K5DU	K5DV	K5DW	K5DX	K5DY	K5DZ	K5E2	K5E3	K5E4
Apr 18	(r)	573	2.6	2.7	586	5.4	5.1	327	2.1	2.4
Feb 19	(r)	585	2.2	2.0	607	4.9	4.3	335	2.6	2.9
Mar 19	(r)	585	2.2	2.2	604	3.2	4.0	334	2.0	2.6
Apr 19	(r)	586	2.4	2.3	616	5.2	4.4	337	3.0	2.5
May 19	(r)	587	2.7	2.4	619	5.2	4.5	339	3.0	2.7
Jun 19	(r)	588	2.3	2.5	621	5.2	5.2	341	3.4	3.1
Jul 19	(r)	589	2.4	2.5	621	5.7	5.4	342	3.2	3.2
Aug 19	(r)	593	3.0	2.6	623	5.6	5.5	343	2.6	3.1
Sep 19	(r)	592	2.5	2.7	622	5.4	5.6	343	3.5	3.1
Oct 19	(r)	594	2.7	2.8	621	5.1	5.4	339	1.4	2.5
Nov 19	(r)	596	2.9	2.7	620	3.3	4.6	340	1.6	2.1
Dec 19	(r)	596	2.8	2.8	619	2.0	3.5	340	1.4	1.5
Jan 20	(r)	594	1.7	2.4	620	2.7	2.7	344	2.9	2.0
Feb 20	(r)	596	1.9	2.1	619	2.1	2.3	343	2.3	2.2
Mar 20	(r)	590	0.9	1.5	611	1.2	2.0	339	1.7	2.3
Apr 20	(p)	572	-2.5	0.1	564	-8.5	-1.8	325	-3.7	0.1

Source: Monthly Wages & Salaries Survey

Earnings enquiries: 01633 456120

Email: earnings@ons.gov.uk

1. Estimates of regular pay exclude bonuses and arrears of pay.

2. The figure in brackets is the percentage of whole economy employment in that sector or industry for the latest time period.

3. The three month average figures are the changes in the average seasonally adjusted values for the three months ending with the relevant month compared with the same period a year earlier.

EARNINGS

16 Average Weekly Earnings - real and nominal¹

Great Britain whole economy, seasonally adjusted

		Total pay (including bonuses) ¹					
		Nominal earnings			Real earnings ³		
		Nominal Weekly Earnings (£)	% changes year on year	3 month average ²	Weekly Earnings at constant 2015 prices (£)	% changes year on year	3 month average ²
			Single month			Single month	
		KAB9	KAC2	KAC3	A3WX	A3WV	A3WW
Apr 18	(r)	513	2.2	2.7	488	0.1	0.4
Feb 19	(r)	531	3.5	3.6	496	1.6	1.6
Mar 19	(r)	531	2.4	3.3	497	0.6	1.4
Apr 19	(r)	534	4.1	3.3	499	2.1	1.4
May 19	(r)	536	4.0	3.5	500	2.1	1.6
Jun 19	(r)	538	3.8	4.0	500	1.9	2.0
Jul 19	(r)	539	3.9	3.9	501	1.9	2.0
Aug 19	(r)	540	3.3	3.7	500	1.6	1.8
Sep 19	(r)	542	3.8	3.6	502	2.1	1.9
Oct 19	(r)	542	2.4	3.2	502	0.9	1.5
Nov 19	(r)	544	3.4	3.2	502	1.8	1.6
Dec 19	(r)	544	2.8	2.9	502	1.4	1.4
Jan 20	(r)	546	3.1	3.1	502	1.3	1.5
Feb 20	(r)	545	2.7	2.9	501	0.8	1.2
Mar 20	(r)	538	1.2	2.3	496	-0.2	0.7
Apr 20	(p)	529	-0.9	1.0	490	-1.7	-0.4

		Regular pay (excluding bonuses)					
		Nominal earnings			Real earnings ³		
		Nominal Weekly Earnings (£)	% changes year on year	3 month average ²	Weekly Earnings at constant 2015 prices (£)	% changes year on year	3 month average ²
			Single month			Single month	
		KAI7	KAI8	KAI9	A2FC	A2F9	A2FA
Apr 18	(r)	484	2.6	2.9	459	0.4	0.5
Feb 19	(r)	497	3.2	3.4	466	1.4	1.5
Mar 19	(r)	498	3.1	3.3	466	1.2	1.5
Apr 19	(r)	503	4.0	3.4	468	2.0	1.5
May 19	(r)	504	3.8	3.6	469	1.9	1.7
Jun 19	(r)	506	4.0	3.9	470	2.1	2.0
Jul 19	(r)	507	3.8	3.9	470	1.8	1.9
Aug 19	(r)	508	3.6	3.8	470	1.8	1.9
Sep 19	(r)	509	3.6	3.6	471	1.9	1.8
Oct 19	(r)	510	3.2	3.5	472	1.6	1.7
Nov 19	(r)	510	3.2	3.3	472	1.7	1.7
Dec 19	(r)	511	3.2	3.2	473	1.8	1.7
Jan 20	(r)	512	2.8	3.1	472	1.0	1.5
Feb 20	(r)	512	2.8	2.9	471	1.2	1.3
Mar 20	(r)	510	2.4	2.7	471	0.9	1.0
Apr 20	(p)	503	0.0	1.7	464	-0.9	0.4

Source: Monthly Wages & Salaries Survey

Earnings enquiries: 01633 456120

Email: earnings@ons.gov.uk

1. Estimates of total pay include bonuses but exclude arrears of pay.

2. The three month average figures are the changes in the average seasonally adjusted values for the three months ending with the relevant month compared with the same period a year earlier.

3. Estimates of real earnings are calculated by deflating the nominal earnings estimates by the Consumer Prices Index including owner occupiers' housing costs (CPIH), our preferred measure of consumer price inflation.

17 International comparisons of employment and unemployment

Employment rates as published by EUROSTAT: (not seasonally adjusted)					Unemployment rates as published by EUROSTAT on 3 June 2020 (seasonally adjusted)					
	Latest period		Employment rate (%) ^{1,2}	Change on year %		Latest Period	Unemployment rate (%) ³	Change on month %	Change on year %	
United Kingdom (*)	ANZ6	Oct-Dec 19	75.6	75.6	United Kingdom (*)	ZXDW	Feb 20	3.8	0.0	0.1
European Union (EU)					European Union (EU)					
Austria	YXSN	Oct-Dec 19	73.8	73.8	Austria	ZXDS	Apr 20	4.8	0.0	0.2
Belgium	YXSO	Oct-Dec 19	65.3	65.3	Belgium	ZXDI	Apr 20	5.6	0.3	0.1
Bulgaria	A495	Oct-Dec 19	70.0	70.0	Bulgaria	A492	Apr 20	6.2	1.7	1.9
Croatia	GUMI	Oct-Dec 19	62.2	62.2	Croatia	GUMJ	Apr 20	8.1	1.3	1.3
Cyprus	A4AC	Jan-Mar 20	70.0	70.0	Cyprus	A4AN	Apr 20	6.3	-1.7	-1.2
Czech Republic	A4AD	Oct-Dec 19	75.3	75.3	Czech Republic	A4AO	Apr 20	2.1	0.1	0.1
Denmark	YXSP	Jan-Mar 20	74.7	74.7	Denmark	ZXDJ	Apr 20	4.6	-0.1	-0.6
Estonia	A4AE	Jan-Mar 20	75.0	75.0	Estonia	A4AP	Mar 20	4.8	0.1	0.8
Finland	YXSQ	Oct-Dec 19	72.7	72.7	Finland	ZXDU	Apr 20	6.6	0.0	-0.1
France	YXSR	Jan-Mar 20	65.7	65.7	France	ZXDN	Apr 20	8.7	1.1	0.2
Germany	YXSS	Oct-Dec 19	77.0	77.0	Germany	ZXDK	Apr 20	3.5	0.0	0.4
Greece	YXST	Oct-Dec 19	56.5	56.5	Greece	ZXDL	Feb 20	16.1	-0.1	-2.3
Hungary	A4AF	Oct-Dec 19	70.3	70.3	Hungary	A4AQ	Apr 20	7.5	0.9	4.1
Ireland	YXSU	Oct-Dec 19	70.2	70.2	Ireland	ZXDO	May 20	5.6	0.2	0.4
Italy	YXSV	Oct-Dec 19	59.2	59.2	Italy	ZXDP	Apr 20	8.1	1.3	-2.1
Latvia	A4AG	Oct-Dec 19	72.7	72.7	Latvia	A4AR	Apr 20	8.9	2.2	2.6
Lithuania	A4AH	Oct-Dec 19	73.2	73.2	Lithuania	A4AS	Apr 20	9.0	1.6	3.0
Luxembourg	YXSW	Oct-Dec 19	67.9	67.9	Luxembourg	ZXDQ	Apr 20	8.6	2.0	2.9
Malta	A4AI	Oct-Dec 19	74.1	74.1	Malta	A4AT	Mar 20	3.7	0.3	0.1
Netherlands	YXSX	Oct-Dec 19	78.4	78.4	Netherlands	ZXDR	Apr 20	3.4	0.5	0.1
Poland	A4AJ	Oct-Dec 19	68.5	68.5	Poland	A4AU	Apr 20	2.9	0.0	-0.5
Portugal	YXSY	Jan-Mar 20	69.8	69.8	Portugal	ZXDT	Apr 20	6.3	0.1	-0.3
Romania	A494	Oct-Dec 19	66.0	66.0	Romania	A48Z	Apr 20	4.8	0.2	0.9
Slovak Republic	A4AK	Oct-Dec 19	68.5	68.5	Slovak Republic	A4AV	Apr 20	6.8	1.2	1.0
Slovenia	A4AL	Oct-Dec 19	71.6	71.6	Slovenia	A4AW	Apr 20	4.6	0.8	0.3
Spain	YXSZ	Jan-Mar 20	62.6	62.6	Spain	ZXDM	Apr 20	14.8	0.6	0.6
Sweden	YXTA	Jan-Mar 20	75.4	75.4	Sweden ⁵	ZXDV	Apr 20	7.9	1.2	1.5
Total EU ⁴	A496	Oct-Dec 19	68.6	68.6	Total EU ⁴	A493	Apr 20	6.6	0.2	-0.2
Eurozone ⁴	YXTC	Oct-Dec 19	68.3	68.3	Eurozone ⁴	ZXDH	Apr 20	7.3	0.2	-0.3
Employment rates published by the OECD (seasonally adjusted)					Unemployment rates as published by national statistical offices (seasonally adjusted)					
Canada	A48O	Jan-Mar 20	73.2	1.0	Canada	ZXDZ	May 20	13.7	0.7	8.3
Japan	A48P	Jan-Mar 20	78.0	-0.1	Japan	ZXDY	Apr 20	2.6	0.1	0.2
United States	A48Q	Jan-Mar 20	71.4	0.3	United States	ZXDX	May 20	13.3	-1.4	9.7

Sources: EUROSTAT, OECD, national statistical offices.
Labour market statistics enquiries: labour.market@ons.gov.uk

(*) Note: The UK rates shown in this table are as published by EUROSTAT (the EU's statistical office). See Table 1 for the latest rates for the UK as published by ONS.

Caution should be taken with international comparisons of labour markets during the COVID-19 pandemic, since definitional definitions of economic measures, such as furloughing, will vary between countries.

- All employment rates shown in this table are for those aged from 15 to 64 except for the rate for the United States published by OECD which are for those aged from 16 to 64.
- The employment rates for the EU are published by EUROSTAT and are not seasonally adjusted. EUROSTAT do not publish seasonally adjusted (SA) employment rates but SA rates for some EU countries are published by OECD. These OECD employment rates are available on our website at [dataset A10](#).
- Unemployment rates published by EUROSTAT for most EU countries (but not for the UK), are calculated by extrapolating from the most recent LFS data using monthly registered unemployment data. A standard population basis (15-74) is used by EUROSTAT except for Spain, Italy and the UK (16-74). The unemployment rate for the US is based on those aged 16 and over, but the rates for Canada and Japan are for those aged 15 and over. All unemployment rates shown in this table are seasonally adjusted.
- The "Total EU" series consist of all 27 EU countries. The Eurozone figures consist of the following EU countries: Austria, Belgium, Cyprus, Estonia, Finland, France, Germany, Greece, Ireland, Italy, Latvia, Lithuania, Luxembourg, Malta, Netherlands, Portugal, Slovak Republic, Slovenia and Spain.
- The EU unemployment rates are as published on the EUROSTAT database. For Sweden the rates on the database differ from those shown in the EUROSTAT News Release published on 3 June 2020. This is because the figures for Sweden on the database are seasonally adjusted estimates but the figures for Sweden shown in the News Release are the trend component.

18 Labour disputes (first published 17 March 2020)

United Kingdom, not seasonally adjusted

	Working days lost (thousands) ^{1,2}	Working days lost in the Public Sector (thousands) ^{1,2}	Working days lost in the Private Sector (thousands) ^{1,2}	Number of stoppages ³	Number of stoppages in the Public Sector	Number of stoppages in the Private Sector	Workers involved (thousands) ^{1,3}
	1	2	3	4	5	6	7
	BBFW	F8XZ	F8Y2	BLUU	F8Y3	F8Y4	BLUT
2018 January	9	1	8	18	4	14	3
2019 January	11	1	11	10	2	8	6
February	7	2	5	11	5	6	6
March	9	1	8	14	6	8	5
April	2	1	2	8	1	7	1
May	10	1	10	14	2	12	5
June	12	1	12	24	5	19	3
July	11	4	7	24	9	15	7
August	7	1	6	10	2	8	2
September	9	1	8	14	3	11	3
October	8	1	7	13	5	8	2
November	84	14	69	13	4	9	21
December (r)	64	7	57	12	7	5	19
2020 January (p)	18	17	1	7	5	2	7
Cumulative totals 12 months to:							
Jan 19	275	26	249	82	23	59	44
Jan 20 (p)	242	50	192	99	34	65	43

Relationship between columns 1=2+3; 4=5+6

Data source: ONS Labour Disputes Survey
Labour disputes enquiries 01633 455400

- Estimates of working days lost and workers involved are shown to the nearest thousand. Unrounded estimates of less than 500 therefore round to zero.
- Due to rounding the working days lost for the public and private sectors may not add up to the total working days lost.
- The latest 12 month cumulative totals for the figures in these columns will not necessarily equal the sum of the 12 months as some disputes continue for over one month. These disputes appear in each month's data, but only once in the total.

VACANCIES

19 Vacancies¹ by size of business

United Kingdom (thousands), seasonally adjusted

		Number of employees					
		All Vacancies	1-9	10-49	50-249	250-2499	2500+
		AP2Y	ALY5	ALY6	ALY7	ALY8	ALY9
Levels							
Mar-May 2018		824	128	118	120	167	292
Mar-May 2019	(r)	841	130	120	111	188	293
Apr-Jun 2019		831	118	121	114	185	293
May-Jul 2019		824	114	121	112	185	291
Jun-Aug 2019		818	112	121	111	184	290
Jul-Sept 2019		820	121	122	105	182	290
Aug-Oct 2019		803	113	119	102	178	290
Sept-Nov 2019		797	110	118	101	178	291
Oct-Dec 2019		801	110	119	103	180	290
Nov-Jan 2020		807	112	121	108	176	290
Dec-Feb 2020	(r)	818	118	121	113	171	295
Jan-Mar 2020	(r)	796	112	110	109	167	298
Feb-Apr 2020	(r)	641	83	81	87	135	255
Mar-May 2020	(p)	476	63	55	62	99	197
Change on quarter	*	-342	-55	-66	-51	-72	-98
Change %	*	-41.8	-46.6	-54.7	-45.2	-42.1	-33.2
Change on year		-365	-67	-65	-49	-89	-95
Change %		-43.4	-51.6	-54.1	-44.3	-47.4	-32.5

1. Excludes Agriculture, Forestry and Fishing.

Source: ONS Vacancy Survey

Vacancy Survey enquiries: vacancy.survey@ons.gov.uk, 01633 456777

* Change on previous non-overlapping three month rolling average time period.

20 Vacancies¹ and Unemployment

United Kingdom (thousands), seasonally adjusted

		All Vacancies ¹	Unemployment ²	Number of unemployed people per vacancy
		AP2Y	MGSC	JPC5
Levels				
Feb-Apr 2018		816	1,416	1.7
Feb-Apr 2019		847	1,304	1.5
May-Jul 2019		824	1,294	1.6
Aug-Oct 2019		803	1,281	1.6
Nov-Jan 2020		807	1,343	1.7
Feb-Apr 2020	(r)	641	1,336	2.1
Change on quarter		-166	-8	0.4
Change %		-20.5	-0.6	
Change on year		-206	31	0.5
Change %		-24.3	2.4	

Source: ONS Vacancy Survey/ Labour Force Survey

Vacancy Survey enquiries: vacancy.survey@ons.gov.uk, 01633 456777

1. Excludes Agriculture, Forestry and Fishing.

2. Unemployment estimates are produced from the Labour Force Survey (LFS) and are always one period behind the ONS Vacancy Survey estimates. This table therefore shows estimates for the same periods as shown in table 1 (which shows LFS estimates).

VACANCIES

21 Vacancies by industry

Standard Industrial Classification (2007)

United Kingdom (thousands), seasonally adjusted

SIC 2007 sections	All vacancies ¹	Mining & quarrying	Manufacturing	Electricity, gas, steam & air conditioning supply ²	Water supply, sewerage, waste & remediation activities	Construction	Wholesale & retail trade; repair of motor vehicles and motor cycles	Transport & storage	Accommodation & food service activities	Information & communication
	B-S	B	C	D	E	F	G	H	I	J
	AP2Y	JP9H	JP9I	JP9J	JP9K	JP9L	JP9M	JP9N	JP9O	JP9P
Levels (thousands)										
Mar-May 2018	824	1	60	3	4	23	131	39	89	47
Mar-May 2019 (r)	841	2	57	4	4	27	135	41	98	46
Apr-Jun 2019	831	2	56	4	4	27	135	41	93	44
May-Jul 2019	824	2	54	3	4	25	135	38	93	42
Jun-Aug 2019	818	2	54	3	4	24	128	35	95	42
Jul-Sept 2019	820	2	52	3	3	25	131	33	97	44
Aug-Oct 2019	803	2	51	3	3	24	128	32	92	43
Sept-Nov 2019	797	1	50	3	4	26	131	33	88	41
Oct-Dec 2019	801	2	52	3	4	26	130	35	86	40
Nov-Jan 2020	807	2	55	3	4	26	129	36	87	42
Dec-Feb 2020 (r)	818	2	56	3	3	28	133	35	90	43
Jan-Mar 2020 (r)	796	1	52	3	4	27	131	35	86	42
Feb-Apr 2020 (r)	641	1	41	3	4	21	101	28	55	31
Mar-May 2020 (p)	476	1	32	2	3	13	67	18	27	21
Change on quarter *	-342	-1	-23	-1	0	-15	-67	-17	-64	-22
Change % *	-41.8	-40.0	-42.1	-25.8	-3.1	-54.3	-49.9	-47.9	-70.7	-51.2
Change on year	-365	-1	-25	-1	-1	-15	-68	-22	-72	-25
Change %	-43.4	-43.8	-43.5	-34.3	-22.5	-53.5	-50.5	-54.6	-73.0	-54.7
	AP2Z	JPA2	JPA3	JPA4	JPA5	JPA6	JPA7	JPA8	JPA9	JPB2
Vacancies per 100 employee jobs										
Mar-May 2018	2.7	2.2	2.4	2.2	1.9	1.6	2.8	2.6	3.9	3.6
Mar-May 2019 (r)	2.7	3.1	2.3	2.6	1.7	1.9	2.9	2.7	4.2	3.5
Apr-Jun 2019	2.7	2.9	2.2	2.7	1.9	1.8	2.9	2.7	4.0	3.3
May-Jul 2019	2.7	2.9	2.1	2.5	1.9	1.7	2.9	2.5	4.0	3.2
Jun-Aug 2019	2.7	3.1	2.2	2.4	1.7	1.6	2.8	2.3	4.1	3.2
Jul-Sept 2019	2.7	3.1	2.1	2.2	1.4	1.7	2.8	2.2	4.1	3.3
Aug-Oct 2019	2.6	2.9	2.0	2.3	1.5	1.7	2.8	2.1	3.9	3.2
Sept-Nov 2019	2.6	2.7	2.0	2.3	1.6	1.8	2.8	2.2	3.8	3.1
Oct-Dec 2019	2.6	2.9	2.1	2.3	1.6	1.8	2.8	2.3	3.7	3.0
Nov-Jan 2020	2.6	3.1	2.2	2.2	1.6	1.8	2.8	2.4	3.7	3.2
Dec-Feb 2020 (r)	2.7	2.9	2.2	2.3	1.4	1.9	2.9	2.4	3.9	3.2
Jan-Mar 2020 (r)	2.6	2.7	2.1	2.4	1.6	1.8	2.8	2.3	3.7	3.1
Feb-Apr 2020 (r)	2.1	2.3	1.6	2.1	1.5	1.4	2.2	1.8	2.4	2.3
Mar-May 2020 (p)	1.6	1.7	1.3	1.7	1.3	0.9	1.4	1.2	1.1	1.6
Change on quarter *	-1.1	-1.2	-0.9	-0.6	0.0	-1.0	-1.4	-1.1	-2.7	-1.6
Change on year	-1.2	-1.4	-1.0	-0.9	-0.4	-1.0	-1.5	-1.5	-3.1	-1.9

SIC 2007 sections	Financial & insurance activities	Real estate activities ²	Professional scientific & technical activities	Administrative & support service activities	Public admin & defence; compulsory social security	Education	Human health & social work activities	Arts, entertainment & recreation	Other service activities	Total services
	K	L	M	N	O	P	Q	R	S	G-S
	JP9Q	JP9R	JP9S	JP9T	JP9U	JP9V	JP9W	JP9X	JP9Y	JP9Z
Levels (thousands)										
Mar-May 2018	39	11	77	55	21	48	131	22	25	733
Mar-May 2019 (r)	34	11	80	49	22	52	138	21	21	749
Apr-Jun 2019	34	12	79	50	23	53	138	20	20	739
May-Jul 2019	34	11	80	48	22	52	139	23	19	736
Jun-Aug 2019	33	11	80	52	23	51	139	23	19	731
Jul-Sept 2019	32	10	84	54	22	49	139	20	20	734
Aug-Oct 2019	31	12	83	54	23	48	138	17	19	720
Sept-Nov 2019	31	11	79	52	23	51	138	16	19	714
Oct-Dec 2019	32	12	77	55	24	51	138	18	19	716
Nov-Jan 2020	31	11	75	53	22	53	137	22	19	717
Dec-Feb 2020 (r)	31	13	77	54	22	51	137	22	18	726
Jan-Mar 2020 (r)	29	14	72	51	22	50	136	23	17	708
Feb-Apr 2020 (r)	26	12	57	43	21	42	128	15	14	571
Mar-May 2020 (p)	22	8	43	37	19	32	112	10	9	425
Change on quarter *	-8	-5	-34	-18	-3	-20	-25	-13	-8	-302
Change % *	-27.5	-38.2	-43.9	-32.3	-12.0	-38.1	-18.1	-57.0	-47.4	-41.5
Change on year	-11	-3	-37	-13	-3	-20	-26	-12	-12	-324
Change %	-34.0	-28.3	-46.0	-25.8	-14.7	-38.6	-18.8	-54.9	-56.0	-43.3
	JPB3	JPB4	JPB5	JPB6	JPB7	JPB8	JPB9	JPC2	JPC3	JPC4
Vacancies per 100 employee jobs										
Mar-May 2018	3.7	2.1	3.0	2.0	1.6	1.8	3.3	3.0	4.0	2.8
Mar-May 2019 (r)	3.2	2.1	3.0	1.8	1.7	1.9	3.4	2.9	3.2	2.9
Apr-Jun 2019	3.2	2.3	2.9	1.8	1.7	2.0	3.4	2.7	3.0	2.8
May-Jul 2019	3.2	2.1	3.0	1.8	1.7	2.0	3.4	3.1	2.9	2.8
Jun-Aug 2019	3.2	2.1	3.0	1.9	1.7	1.9	3.4	3.1	3.0	2.8
Jul-Sept 2019	3.0	1.9	3.1	2.0	1.7	1.9	3.4	2.7	3.1	2.8
Aug-Oct 2019	3.0	2.2	3.1	2.0	1.8	1.8	3.4	2.3	2.9	2.7
Sept-Nov 2019	2.9	2.1	2.9	2.0	1.8	1.9	3.4	2.2	2.9	2.7
Oct-Dec 2019	3.0	2.3	2.9	2.1	1.8	1.9	3.4	2.4	2.9	2.7
Nov-Jan 2020	3.0	2.1	2.8	2.0	1.6	2.0	3.4	2.9	2.9	2.7
Dec-Feb 2020 (r)	2.9	2.5	2.9	2.0	1.6	1.9	3.4	3.0	2.7	2.8
Jan-Mar 2020 (r)	2.8	2.6	2.7	1.9	1.7	1.9	3.3	3.0	2.6	2.7
Feb-Apr 2020 (r)	2.5	2.3	2.1	1.6	1.6	1.6	3.1	2.0	2.1	2.2
Mar-May 2020 (p)	2.1	1.5	1.6	1.4	1.4	1.2	2.7	1.3	1.4	1.6
Change on quarter *	-0.8	-0.9	-1.3	-0.7	-0.2	-0.7	-0.6	-1.7	-1.3	-1.2
Change on year	-1.1	-0.6	-1.4	-0.5	-0.2	-0.7	-0.6	-1.6	-1.8	-1.2

1. Excludes Agriculture, Forestry and Fishing.

2. Not seasonally adjusted. These series do not display seasonality. Therefore the unadjusted series is the best estimate of a 'seasonally adjusted' series.

* Change on previous non-overlapping three month rolling average time period.

Source: ONS Vacancy Survey

Vacancy Survey enquiries: vacancy.survey@ons.gov.uk, 01633 456777

REDUNDANCIES

22 Redundancies: level and rates¹

United Kingdom (seasonally adjusted)

	People (aged 16 and over)		Men (aged 16 and over)		Women (aged 16 and over)	
	Level (000s)	Rate ¹	Level (000s)	Rate ¹	Level (000s)	Rate ¹
	BEAO	BEIR	BEIU	BEIX	BEJA	BEJD
Feb-Apr 2018	108	4.0	58	4.2	49	3.7
Feb-Apr 2019	108	3.9	64	4.6	44	3.2
May-Jul 2019	98	3.5	51	3.7	47	3.4
Aug-Oct 2019	118	4.3	62	4.5	56	4.1
Nov-Jan 2020	106	3.8	61	4.4	45	3.3
Feb-Apr 2020	107	3.9	64	4.6	43	3.1
Change on quarter	1	0.0	4	0.3	-3	-0.2
Change %	1.0		6.1		-5.8	
Change on year	-1	0.0	1	0.1	-2	-0.1
Change %	-1.0		0.8		-3.6	

Data source: Labour Force Survey

Labour market statistics enquiries: labour.market@ons.gov.uk

1. The redundancy rate is the ratio of the redundancy level for the given quarter to the seasonally adjusted number of employees in the previous quarter.

REGIONAL SUMMARY

23(1) Regional summary of labour market headline indicators

Thousands, seasonally adjusted

Headline estimates for February to April 2020

Area Codes	Area Names	Economical ly active ¹		Employe nt		Unemploy ment		Economical ly inactive	
		Aged 16+ Level	Aged 16-64 Rate (%) ²	Aged 16+ Level	Aged 16-64 Rate (%) ²	Aged 16+ Level	Aged 16+ Rate (%) ³	Aged 16-64 Level	Aged 16-64 Rate (%) ²
K02000001	United Kingdom	34,327	79.5	32,991	76.4	1,336	3.9	8,470	20.5
K03000001	Great Britain	33,439	79.7	32,123	76.5	1,315	3.9	8,158	20.3
E92000001	England	29,124	80.1	27,982	76.8	1,142	3.9	6,954	19.9
E12000001	North East	1,313	77.8	1,245	73.9	68	5.2	362	22.2
E12000002	North West	3,698	79.2	3,547	75.9	151	4.1	934	20.8
E12000003	Yorkshire and The Humber	2,707	77.1	2,601	74.0	106	3.9	773	22.9
E12000004	East Midlands	2,486	81.2	2,395	78.1	91	3.7	555	18.8
E12000005	West Midlands	2,930	78.3	2,789	74.5	141	4.8	785	21.7
E12000006	East	3,229	81.1	3,111	78.0	118	3.6	715	18.9
E12000007	London	5,063	80.1	4,828	76.4	234	4.6	1,212	19.9
E12000008	South East	4,828	82.1	4,682	79.5	146	3.0	1,002	17.9
E12000009	South West	2,870	81.5	2,783	78.9	86	3.0	617	18.5
W92000004	Wales	1,536	76.8	1,489	74.4	47	3.0	443	23.2
S92000003	Scotland	2,779	77.9	2,652	74.3	127	4.6	761	22.1
N92000002	Northern Ireland	888	73.3	868	71.6	20	2.3	312	26.7

Change on quarter (change since November to January 2020)

Note: Changes on quarter at regional level are particularly subject to sampling variability and should be interpreted in the context of changes over several quarters rather than in isolation.

Area Codes	Area Names	Economical ly active ¹		Employe nt		Unemploy ment		Economical ly inactive	
		Aged 16+ Level	Aged 16-64 Rate (%) ²	Aged 16+ Level	Aged 16-64 Rate (%) ²	Aged 16+ Level	Aged 16+ Rate (%) ³	Aged 16-64 Level	Aged 16-64 Rate (%) ²
K02000001	United Kingdom	-2	-0.1	6	-0.1	-8	0.0	39	0.1
K03000001	Great Britain	7	-0.1	14	-0.1	-6	0.0	30	0.1
E92000001	England	-2	-0.1	30	0.0	-32	-0.1	32	0.1
E12000001	North East	25	1.3	36	2.1	-11	-1.0	-21	-1.3
E12000002	North West	4	-0.2	16	0.0	-12	-0.3	7	0.2
E12000003	Yorkshire and The Humber	16	0.6	34	1.0	-17	-0.7	-19	-0.6
E12000004	East Midlands	2	-0.1	8	0.1	-6	-0.3	4	0.1
E12000005	West Midlands	-30	-0.7	-38	-0.7	7	0.3	25	0.7
E12000006	East	-10	-0.1	-17	-0.4	7	0.2	3	0.1
E12000007	London	34	0.6	24	0.4	10	0.2	-32	-0.6
E12000008	South East	2	-0.6	12	-0.5	-10	-0.2	36	0.6
E12000009	South West	-46	-0.9	-45	-1.0	-1	0.0	30	0.9
W92000004	Wales	6	-0.2	10	0.0	-4	-0.3	4	0.2
S92000003	Scotland	4	0.2	-27	-0.7	30	1.1	-6	-0.2
N92000002	Northern Ireland	-9	-0.8	-7	-0.7	-1	-0.1	9	0.8

Change on year (change since February to April 2020)

Area Codes	Area Names	Economical ly active ¹		Employe nt		Unemploy ment		Economical ly inactive	
		Aged 16+ Level	Aged 16-64 Rate (%) ²	Aged 16+ Level	Aged 16-64 Rate (%) ²	Aged 16+ Level	Aged 16+ Rate (%) ³	Aged 16-64 Level	Aged 16-64 Rate (%) ²
K02000001	United Kingdom	276	0.3	245	0.3	31	0.1	-111	-0.3
K03000001	Great Britain	281	0.3	242	0.3	39	0.1	-115	-0.3
E92000001	England	332	0.6	307	0.5	25	0.0	-181	-0.6
E12000001	North East	40	2.8	45	3.2	-4	-0.5	-47	-2.8
E12000002	North West	66	1.2	48	0.8	18	0.4	-56	-1.2
E12000003	Yorkshire and The Humber	-13	-0.6	15	0.3	-28	-1.0	21	0.6
E12000004	East Midlands	38	1.4	52	1.8	-14	-0.6	-40	-1.4
E12000005	West Midlands	5	0.3	9	0.5	-4	-0.2	-9	-0.3
E12000006	East	0	-0.6	-21	-1.2	21	0.7	26	0.6
E12000007	London	178	1.9	153	1.5	26	0.4	-106	-1.9
E12000008	South East	62	0.1	59	0.1	3	0.0	-3	-0.1
E12000009	South West	-44	-1.0	-52	-1.2	8	0.3	33	1.0
W92000004	Wales	-38	-2.3	-15	-1.1	-22	-1.3	44	2.3
S92000003	Scotland	-14	-0.6	-50	-1.7	36	1.3	22	0.6
N92000002	Northern Ireland	-4	-0.3	3	0.3	-8	-0.8	4	0.3

The Labour Force Survey is tabulated by region of residence.

1. Economically active = Employment plus Unemployment.

2. Denominator = all persons aged 16 to 64.

3. Denominator = total economically active

Source: Labour Force Survey
Labour market statistics enquiries: labour.market@ons.gov.uk

REGIONAL SUMMARY

23(2) Regional summary of Workforce Jobs

Thousands,
seasonally adjusted

Area Codes	Area Names	March 2020	Change on December 2019
K02000001	United Kingdom	35,832	35
K03000001	Great Britain	34,904	33
E92000001	England	30,604	20
E12000001	North East	1,229	17
E12000002	North West	3,798	11
E12000003	Yorkshire and The Humber	2,792	1
E12000004	East Midlands	2,473	24
E12000005	West Midlands	2,916	-20
E12000006	East	3,306	35
E12000007	London	6,144	22
E12000008	South East	4,907	-61
E12000009	South West	3,040	-9
W92000004	Wales	1,489	21
S92000003	Scotland	2,811	-8
N92000002	Northern Ireland	920	3

Workforce jobs are mainly sourced from employer surveys and are tabulated by region of workplace.

HM Forces stationed abroad are included in the UK workforce jobs estimates but not in the regional estimates. The UK workforce jobs estimates therefore do not equal the sum of the regional estimates.